

T-1000-S18NBH

Advanced Poly-Wide Bagger™ Parts Addendum

(Model T-1000-S18)

Version 9 Revision G



1331 Emmitt Road • Akron, OH 44306 • 1-800-754-4403 • fax 330-785-4010 • www.advancedpoly.com

Acknowledgments

Written By: David Kolinski-Schultz

Reviewed By: Stuart Baker

Copyright

2019 (Ver. 9G) 2018 (Ver. 9F) 2018 (Ver. 9E) 2015 (Ver. 9) 2014 (Ver. 8), 2010 (Ver. 7) 2009 (Ver. 6), 2007 (Ver. 5), 2006 (Ver. 4), 2003 (Ver. 3), 2001 (Ver. 2), 1995 (Ver. 1), Advanced Poly-Packaging, Inc. (APPI). All rights reserved.

This manual and the program operating the equipment described in it are copyrighted. You may not copy this manual in whole or part without the consent of Advanced Poly-Packaging, Inc.

All information pertaining to the promotion, sale, distribution, operation and maintenance of the T-1000-S14 ADVANCED POLY-BAGGER including this manual, drawings, schematic, wiring diagrams, VHF video tapes, brochures, specification sheets, figures, charts, or any other information, due to its proprietary design and manufacture remain the property of Advanced Poly Packaging, Inc. Unauthorized duplication, distribution or disclosure to third parties without the express permission of Advanced Poly-Packaging, Inc. is strictly prohibited.

Trademarks

T-1000-S18 is a trademark of Advanced Poly-Packaging, Inc. Advanced Poly-Packaging, Inc. owns also the following trademarks: Advanced Poly-Bags, Advanced Poly-Bagger, Seal-a-Print, Roll-a-Print, Twin-Seal, Advanced Poly-Pack, Advanced Poly-Bag, and Advanced Bag.

Limited Warranty and Disclaimer

Warranty period is 12 months or 1,000,000 cycles whichever comes first. The warranty commences on the date of delivery of the equipment to the Purchaser. APPI warrants to the Purchaser that the equipment is free from defects in workmanship or material under normal use and service. During the warranty period, APPI agrees to repair or replace, at its sole option, without charge to Purchaser, any defective component part of the equipment. To obtain service, Purchaser must return the equipment or component to APPI or an authorized APPI distributor or service representative in an adequate container for shipping. Any shipping charges, insurance, or other fees must be paid by Purchaser and all risk for the equipment shall remain with Purchaser until such time as APPI takes receipt of the equipment. Upon receipt, APPI, the authorized distributor or service representative will promptly repair or replace the defective component and then return the equipment or component to Purchaser, shipping charges, insurance, and additional fees prepaid. APPI may use reconditioned or like new parts or units, at its sole option, when repairing any component or equipment. Repaired products shall carry the same amount of outstanding warranty as from original purchase. Any claim under the warranty must include a dated proof of delivery. In any event, APPI's liability for defective components or equipment is limited to repairing or replacing the components. This warranty is contingent upon proper use of the equipment by Purchaser and does not cover: expendable component part such thermocouple wire, heater cartridge, rollers, bushings, and the like; or if damage is due to accident, unusual physical, electrical or electromechanical stress, neglect, misuse, failure of electric power, water damage (from airlines), improper environmental conditions, transportation, tampering with or altering of the equipment, packaging of corrosive or contaminating products or other products damaging to components, and equipment or components not owned or in the possession of original Purchaser. APPI will not be liable for loss of production, profits, lost savings, special, incidental, consequential, indirect, or other similar damages arising from breach of warranty, breach of contract, negligence, or their legal action even if APPI or its agent has been advised of the possibility of such damages or for any claim brought against the Purchaser by another party. This warranty allocates risks of equipment failure between Purchaser and APPI. APPI's pricing reflects this allocation of risk and the limitations of liability contained in this warranty. The warranty set forth above is in lieu of all other express warranties, whether oral or written. The agents, employees, distributors, and dealers of APPI are not authorized to make modifications to this warranty, or additional warranties binding on APPI. Accordingly, additional statements such as dealer advertising or presentations, whether oral or written, do not constitute warranties by APPI and should not be relied upon. Warranty on equipment is considered void when outstanding balances become delinquent (over 30 days late - 60 days after ship date). Equipment Integration to other Equipment: APPI assumes no responsibility for the integration of its products to other products or within a system unless APPI performs the integration, testing and provides the results of the tests to the purchaser in writing. Furthermore, APPI assumes no responsibility for bag sizing whether suggested or recommended.

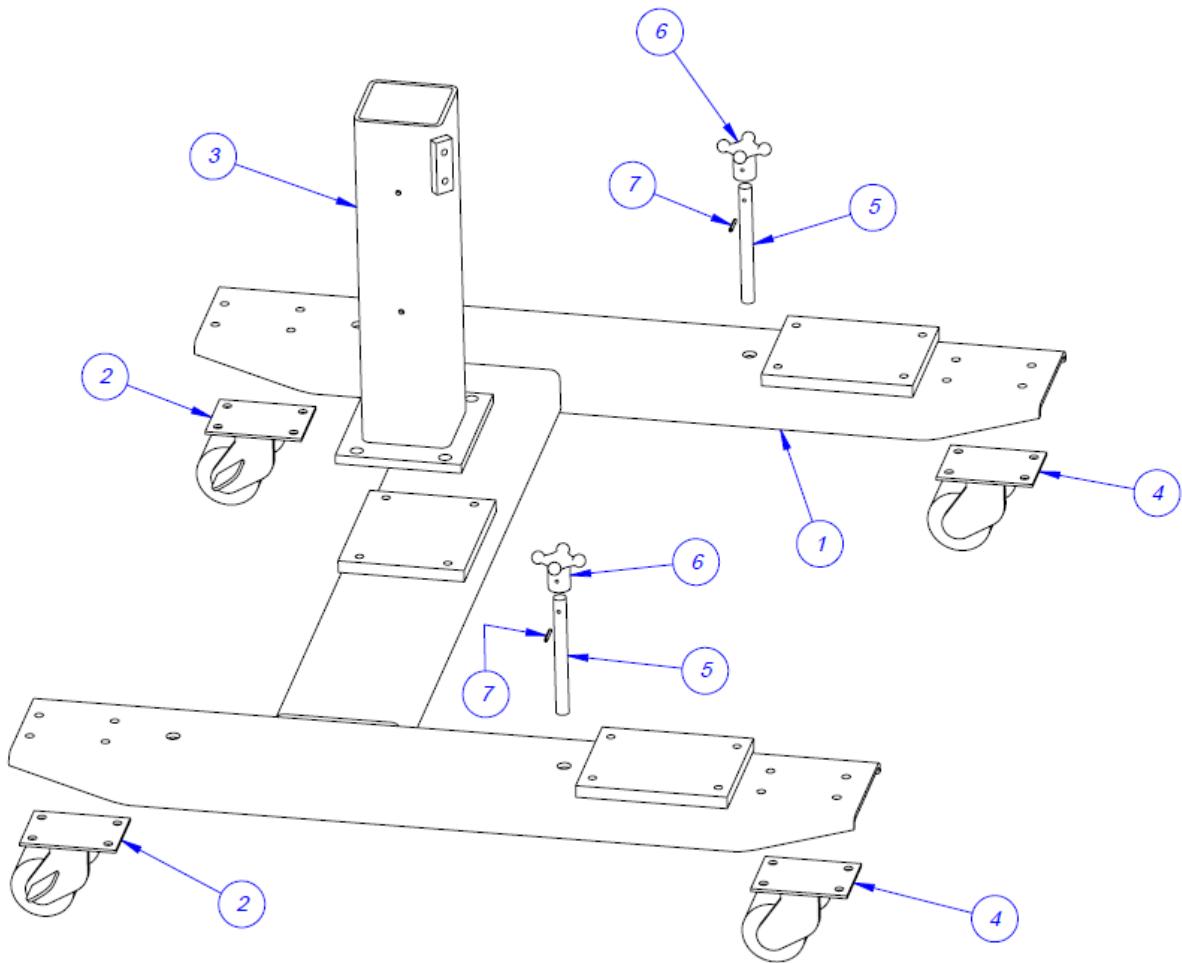
Contents

H-Stand, T-1000 Horizontal.....	3
Upper Column Assembly.....	4
Dancer Assembly- Horizontal Wide	5
NBO Main Frame Assembly- T-1000-S18.....	6
NBO Air Knife Assembly, S-18	8
NBO Sealer Frame Assembly, S-18.....	10
1/8" Heater Bar, W-18	12
Electronic Panel, T-1000-S14 & S18	13
IOP Control Case, Horizontal S-18.....	15
Ti-1000Z Electronic Panel Assembly	17
Printer Mounting Assembly	19
Upper Roller Assembly.....	20
PTFE Guide Assembly.....	21
Grooved Roller Assembly.....	22
Bag Finger Ground Assembly	23
Latch Sub Assembly.....	24
HLS-20 Horizontal Drop Plate	25
Covers	26
Work Surface.....	27

H-Stand, T-1000 Horizontal

TA-T1-10200H

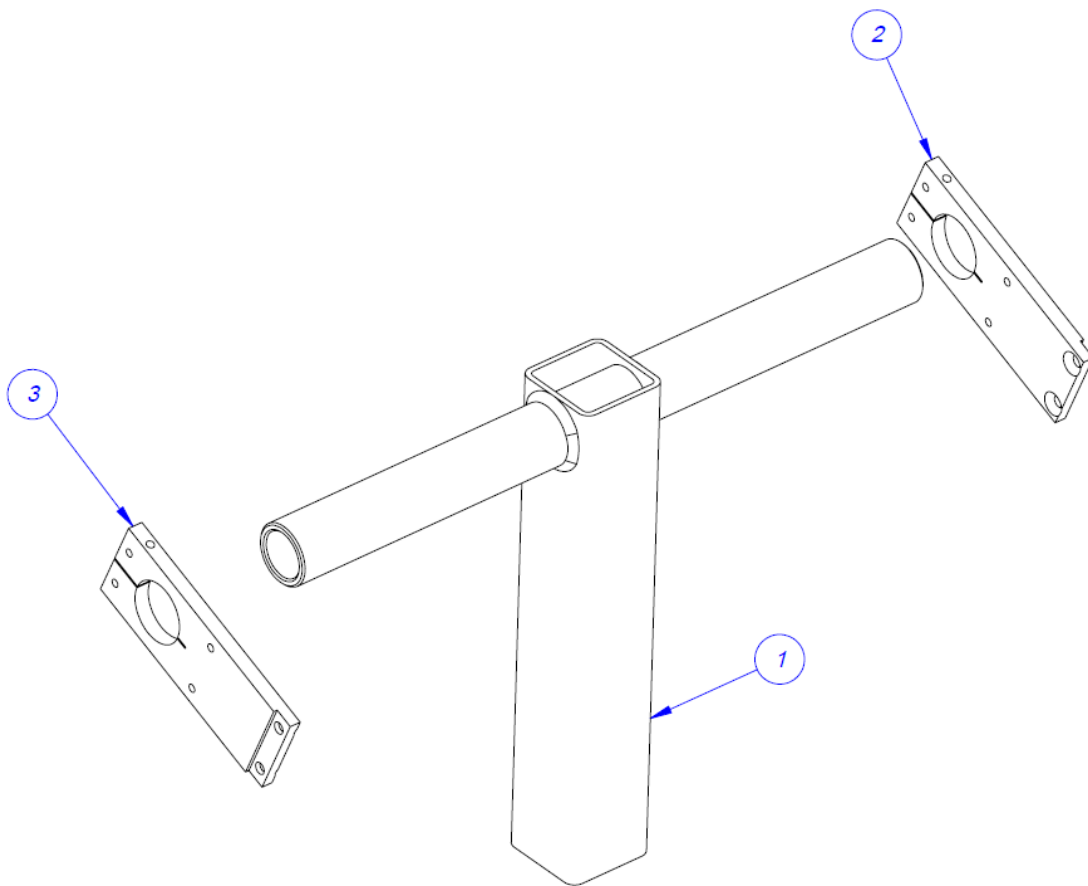
ITEM NO.	QTY.	PART NO.	DESCRIPTION
1	1	TP-T1MA0051H	"H" FRAME HORIZONTAL INCLINE
2	2	TP- 110755	SWIVEL T-1000 w/BRAKE
3	1	TP-T1MA00051-1	LOWER COLUMN
4	2	TP- 110756	CASTER, SWIVEL
5	2	TP-106094	STUD, FLOOR LEVELER
6	2	TP-109148	HAND KNOB
7	2	TP-105119	SLOTTED SPRING PIN



Upper Column Assembly

TA-T1-10210H-S18

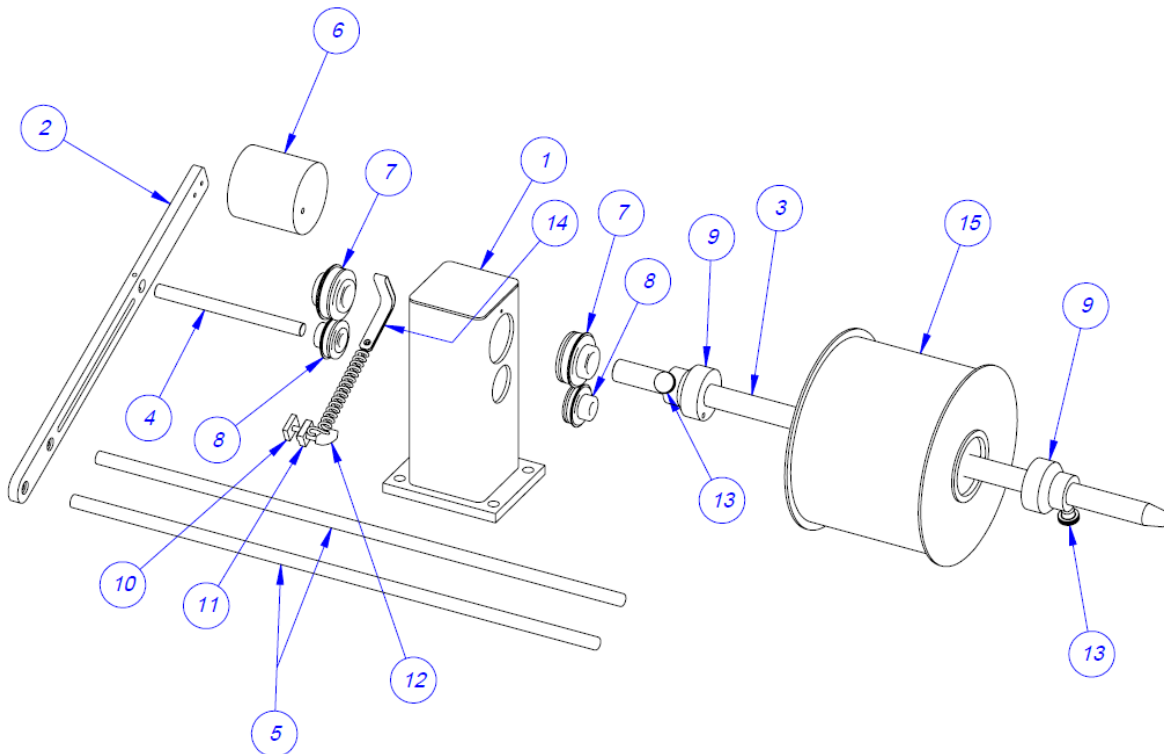
ITEM NO.	QTY.	PART NO.	DESCRIPTION
1	1	TP-T1MA00087	CROSS PIPE WELDMENT
2	1	TP-T1MC00019	BASE CLAMP (L. H.)
3	1	TP-T1MC00019	BASE CLAMP (R. H.)



Dancer Assembly- Horizontal Wide

TA-T1-10220H-S18

ITEM NO.	QTY.	PART NO.	DESCRIPTION
1	1	TP-T1MA00036H	DANCER POST
2	1	TP-T1MA00072H	DANCER ARM
3	1	TP-T1MA00073H-S18	ROLL SHAFT
4	1	TP-T1MA00090H-S18	DANCER SHAFT
5	2	TP-T1MA00089H-S18	DANCER ROD
6	1	TP- HB0032	COUNTER WEIGHT
7	2	TP-107104	BEARING
8	2	TP-107103	BEARING
9	2	TP-T1MA00049	FILM TENSION HUB
10	1	TP-T1MA00186-2	TENSION ADJUSTER
11	1	TP-T1MA00186-1	TENSION ADJUSTER
12	1	TP-109212-1	"T" KNOB
13	2	TP-109212	KNOB
14	1	TP-T1MA00115	BELT TENSION & STRAP SPRING
15	1	VARIES	BAG ROLL

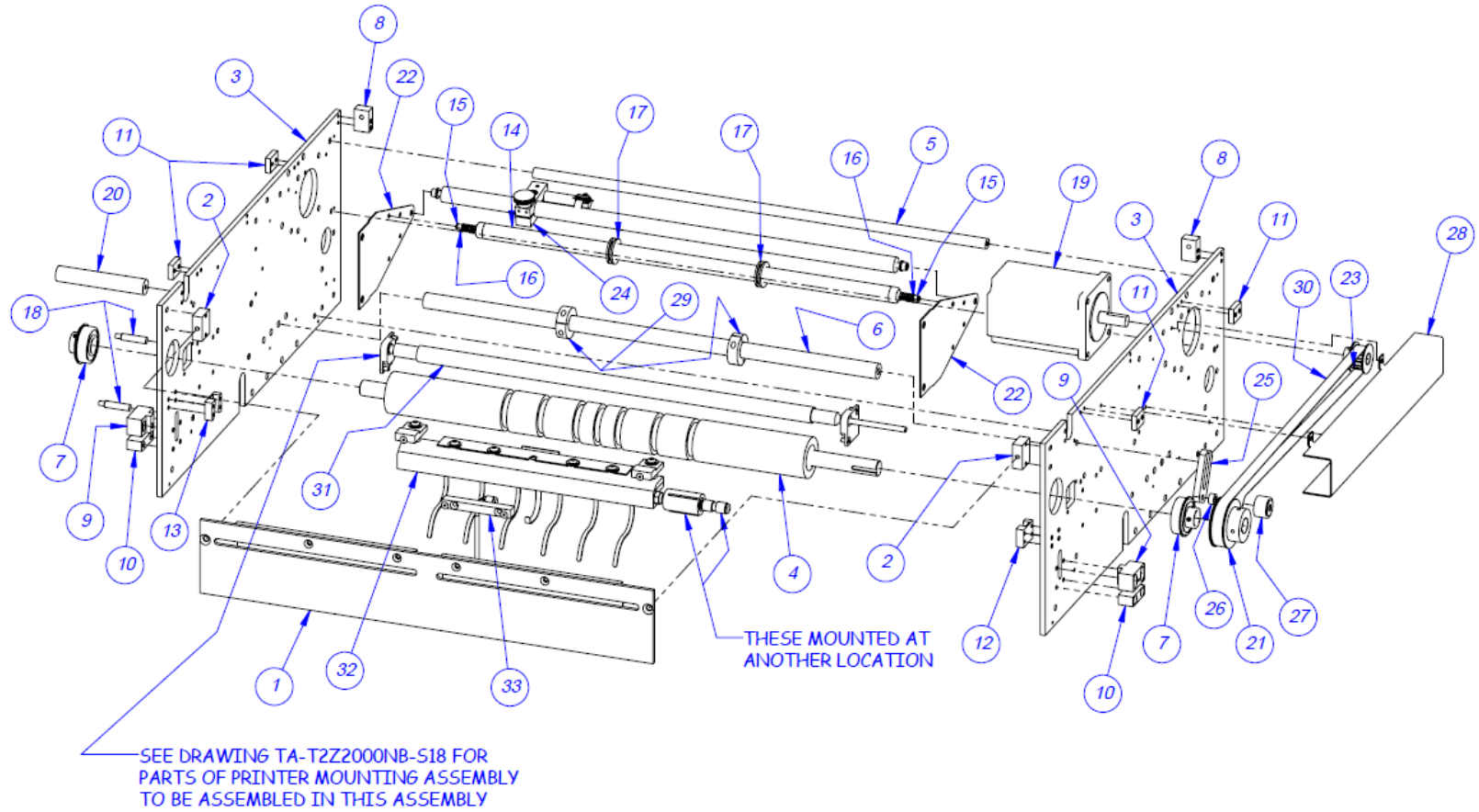


NBO Main Frame Assembly- T-1000-S18

TA-T1-10250-S18NB

ITEM NO.	QTY.	PART NO.	DESCRIPTION
1	1	TP-T1MC00042S18NB	FACE PLATE
2	2	TP-T1MC00044	FACE PLATE BLOCK
3	2	TP-T1-00001-S18NB	SIDE PLATE
4	1	TP-T1MC00017S18NB	RUBBER ROLLER
5	1	TP-T1MC00056-W18	SHAFT, REAR SUPPORT
6	1	TP-T1MC00079-W18	CYLINDER PIVOT SHAFT
7	2	TP-504113	BEARING
8	2	TP-T1MC00099	REAR COVER SUPPORT
9	2	TP-T1MC00059	LATCH LOCK BLOCK
10	2	TP-T1MC00058	LATCH ADJUSTER BLOCK
11	4	TP-T1MC00054	COVER SUPPORT CLAMP
12	1	TP-T1MC00163-1	GUIDE BLOCK (RIGHT)
13	1	TP-T1MC00163-2	GUIDE BLOCK
14	1	TP-T1MC00052-W18	GUIDE ROLLER
15	2	TP-106106	SPRING PIN
16	2	TP-108099	COMPRESSION SPRING
17	2	TP-111010	SPRING CLOSURE COLLAR
18	2	TP-215200	SWITCH, MAGNETIC
19	1	TP-501170	STEPPER MOTOR
20	1	TP-T1MC00082	COVER STAND-OFF
21	1	TP-T1MC00162S18NB	DRIVEN PULLEY
22	2	TP-T1MC00118-6	EXT PASS BRACKET
23	1	TP-T14M1027NB	MOTOR PULLEY
24	1	TO-T1-BO10	BAG OUT SENSOR ASSEMBLY
25	1	TP-T1MC00091	BELT TENSIONER
26	1	TP-104147	METAL SPACER
27	1	TP-504132	CAM FOLLOWER
28	1	TP-T1MD00050NB	BELT COVER
29	2	TP-111142	CLAMP COLLAR, 2-PC, SPLIT 3/4"
30	1	TP-503157	BELT
31	1	TA-T222000NB-S18	PART OF PRINTER MOUNTING ASSEMBLY
32	2	TA-T1-10001-S18NB	AIR KNIFE ASSEMBLY-WIDE
33	1	TA-T10001-1NB	AIR PULSE ASSEMBLY

NBO Main Frame Assembly

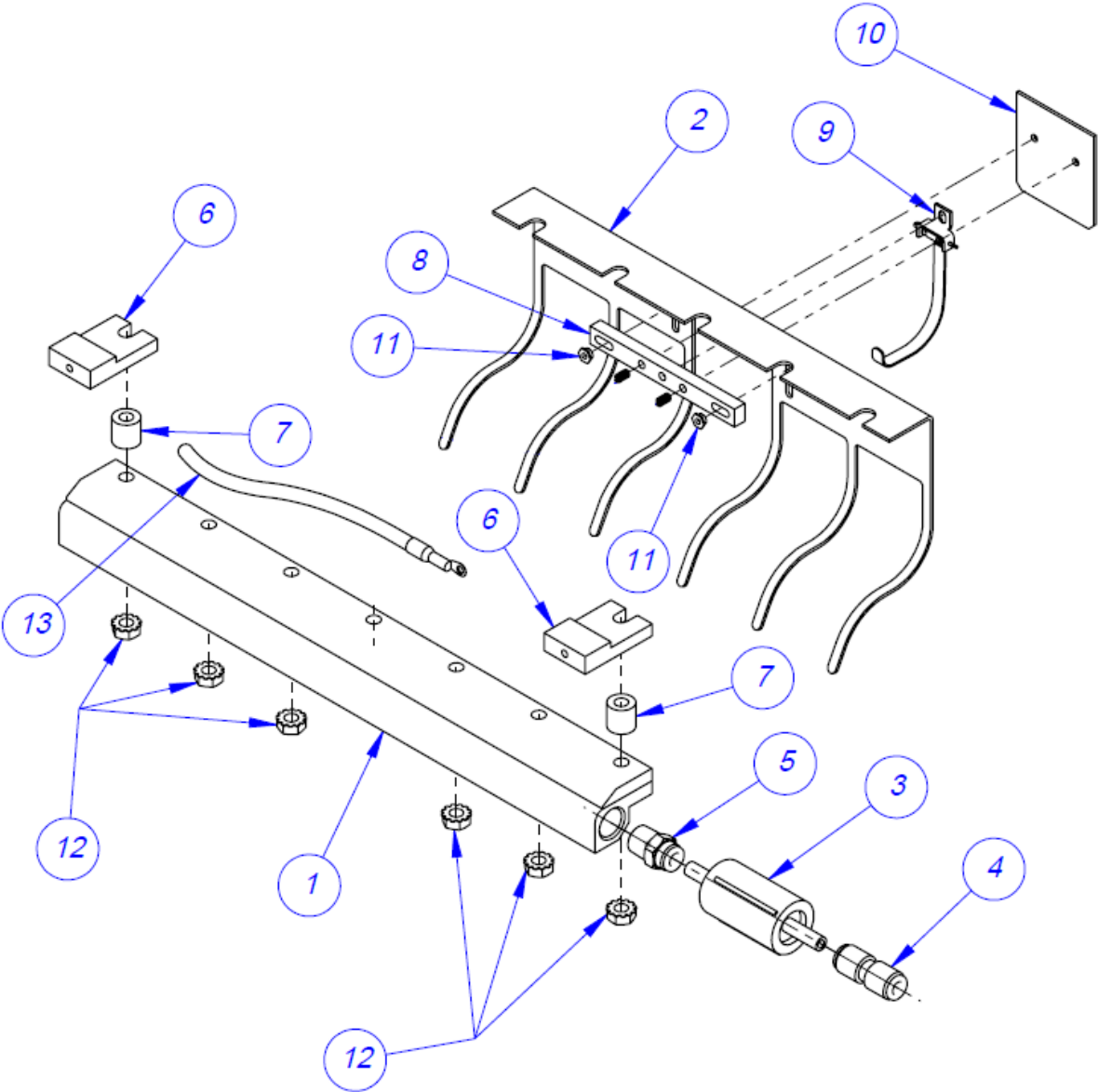


NBO Air Knife Assembly, S-18

TA-T1-10001-S18NB

ITEM NO.	QTY.	PART NO.	DESCRIPTION
1	1	TP-405269	AIR KNIFE 12" VENTURI
2	1	TP-T1MC00020S18NB	FINGER PLATE
3	1	TP-406181	MICRON FILTER
4	1	TP-401262	UNION, STRAIGHT 1/4" TUBE
5	1	TP-401292	STRAIGHT CONNECTOR,
6	2	TP-T1MC00022NBS18	AIR KNIFE MOUNT
7	2	TP-104153	SPACER
8	1	TP-T1MC00083	INSULATOR
9	1	TA-T100124-1S18NB	NBO S18 SENSOR
10	1	TP-T1MC00025NB	HIGH-VOLTAGE SHIELD
11	2	TP-106540	CAPTIVE NUT
12	6	TP-101092	NUT, 1/4-20 W/TOOTH WASHER
13	1	TP-T1ME00302	HIGH-VOLTAGE CABLE

NBO Air Knife Assembly

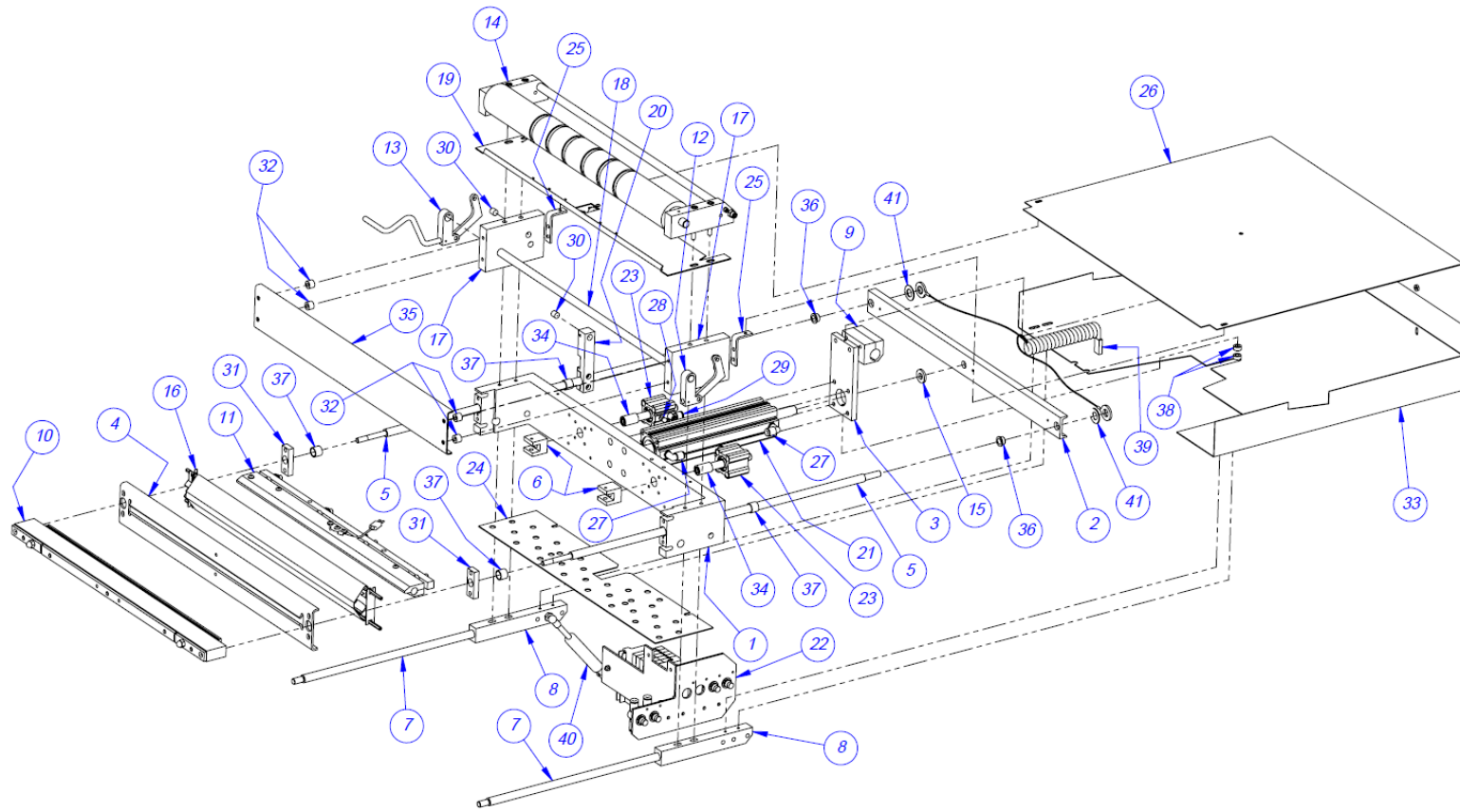


NBO Sealer Frame Assembly, S-18

TA-T1-10280-S18NB

ITEM NO.	QTY.	PART NO.	DESCRIPTION
1	1	TP-T1-00200S18	SEALER FRAME
2	1	TP-T1MB00010-W18	SEALER ROD TIE
3	1	TP-T1MB00016S18	SEAL CYLINDER MOUNTING BLOCK
4	1	TP-T1MB00005-W18	FRONT GRIPPER PLATE
5	2	TP-T1MB00033-W18-2	SEAL GUIDE ROD
6	2	TP-T1MB00057	HEATER BAR YOKE
7	2	TP-T1MB00144-3	SHIELD MOUNTING ROD
8	2	TP-T1MB00022	GUARD ROD MOUNTING BLOCK
9	1	TP-T1MB00164	PIVOT CLAMP
10	1	TA-T10005-W18	PRESSURE BAR SUB ASSEMBLY
11	1	TA-T1-10006-W18	HEATER BAR SUB-ASSEMBLY
12	1	TA-T1-10019	NO-HANDLE LATCH ASSEMBLY
13	1	TA-T1-10019LH	LEFT HAND LATCH ASSEMBLY
14	1	TA-T1-10012-W18	GROOVED ROLLER MOUNT ASSY.
15	1	TP-102109	HEAT TREATED WASHER
16	1	TA-T1-10009-W18	PTFE GUIDE SUB-ASSEMBLY
17	2	TP-T1MO00023-W18	DROP FRAME SPACER
18	1	TP-T1MB00063-W18	LATCH SHAFT
19	1	TA-T10017	BAG FINGER GROUNDING ASSY
20	1	TP-T1MB00107-S18	MAGNETIC SENSOR BLOCK
21	1	TP-403242	MAIN CYLINDER
22	1	TA-T1-10020-S14	MANIFOLD ASSEMBLY
23	2	TP-403245	CYLINDER
24	1	TP-T1MD00277NB-S18	SHORT INTERNAL GUARD
25	2	TP-T1MD00276NB-S18-4	GUARD BRACKET
26	1	TP-T1MD00276NB-S18-2	NBO INTERNAL GUARD
27	2	TP-401257	ELBOW, 1/4" TUBE x 1/8 NPT
28	2	TP-401277	ELBOW, 1/4" TUBE x #10-32
29	2	TP-402186	FLOW CONTROL, #10-32
30	2	TP-211374	MAGNET, ROUND
31	2	TP-T1MB00027-1	GRIPPER SPACER
32	4	TP-104210	SPACER, 3/8" LG
33	1	TP-T1MD00275NB-S18-2	BOTTOM INTERNAL GUARD
34	2	TP-107127-1	BRONZE BUSHING
35	1	TP-T1MBO0129-W18	DROP FRAME FACE PLATE (WIDE)
36	2	TP-107228	BUSHING, NYLON FLANGE
37	4	TP-107160-1	PTFE COATED BUSHING
38	2	TP-104124	SPACER
39	1	TP-T1ME00209	SEAL BAR COIL CABLE
40	1	TP-403508	GAS SPRING
41	2	TP-107227	BUSHING, THRUST NYLON

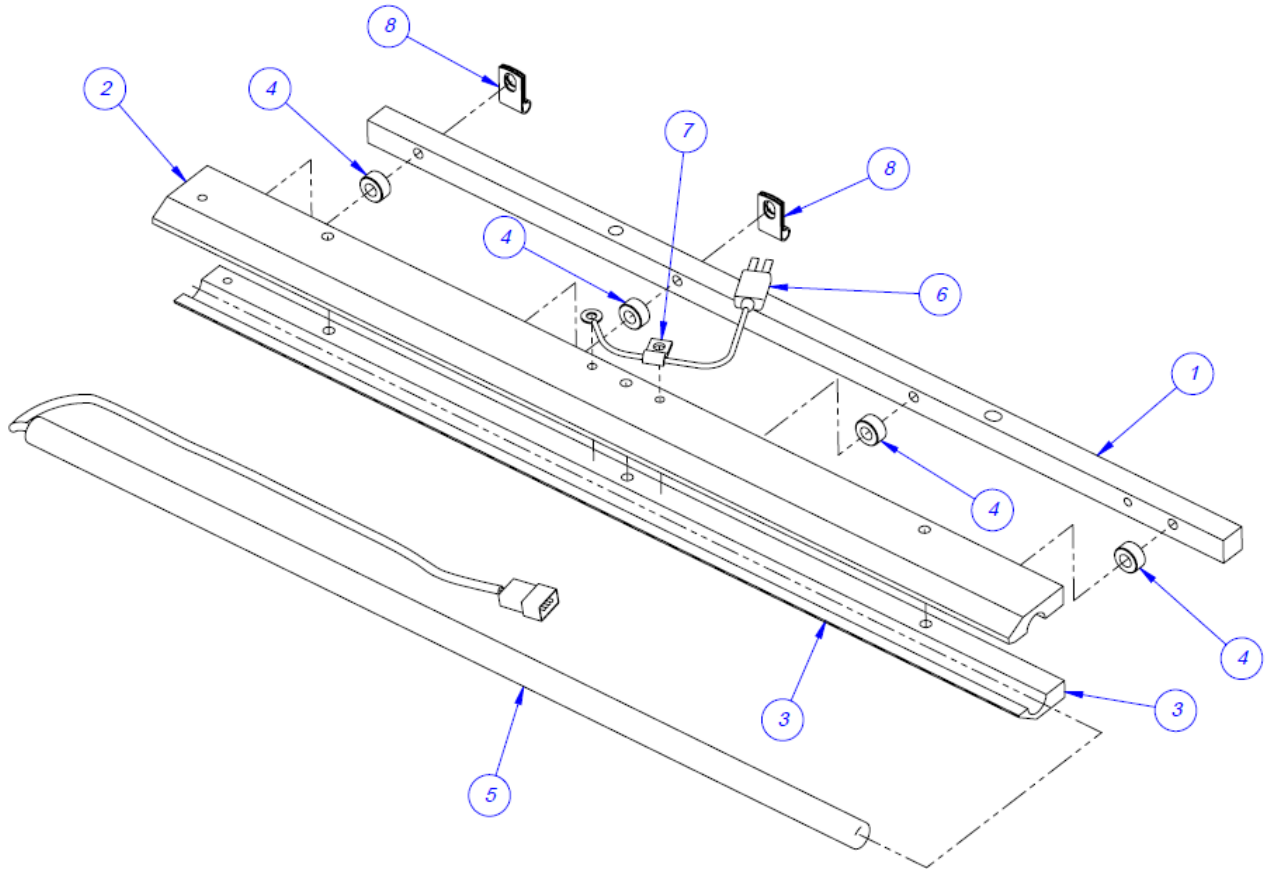
NBO Sealer Frame Assembly



1/8" Heater Bar, W-18

TA-T1-10006-1W18

ITEM NO.	QTY.	PART NO.	DESCRIPTION
1	1	TP-T1MB00008-W18	HEATER BAR MOUNTING PLATE
2	1	TP-T1MB00007-W18	HEATER BAR
3	1	TP-T1MB00006-W18	HEATER BAR CLAMP
4	4	TP-104124	SPACER
5	1	TP-217116	CARTRIDGE, HEATER
6	1	TP-221416	THERMOCOUPLE WIRE
7	1	TP-T1MB00145	WIRE TIE DOWN
8	2	TP-109096	WIRE CLAMP



Electronic Panel, T-1000-S14 & S18

TA-T1-10270-S14

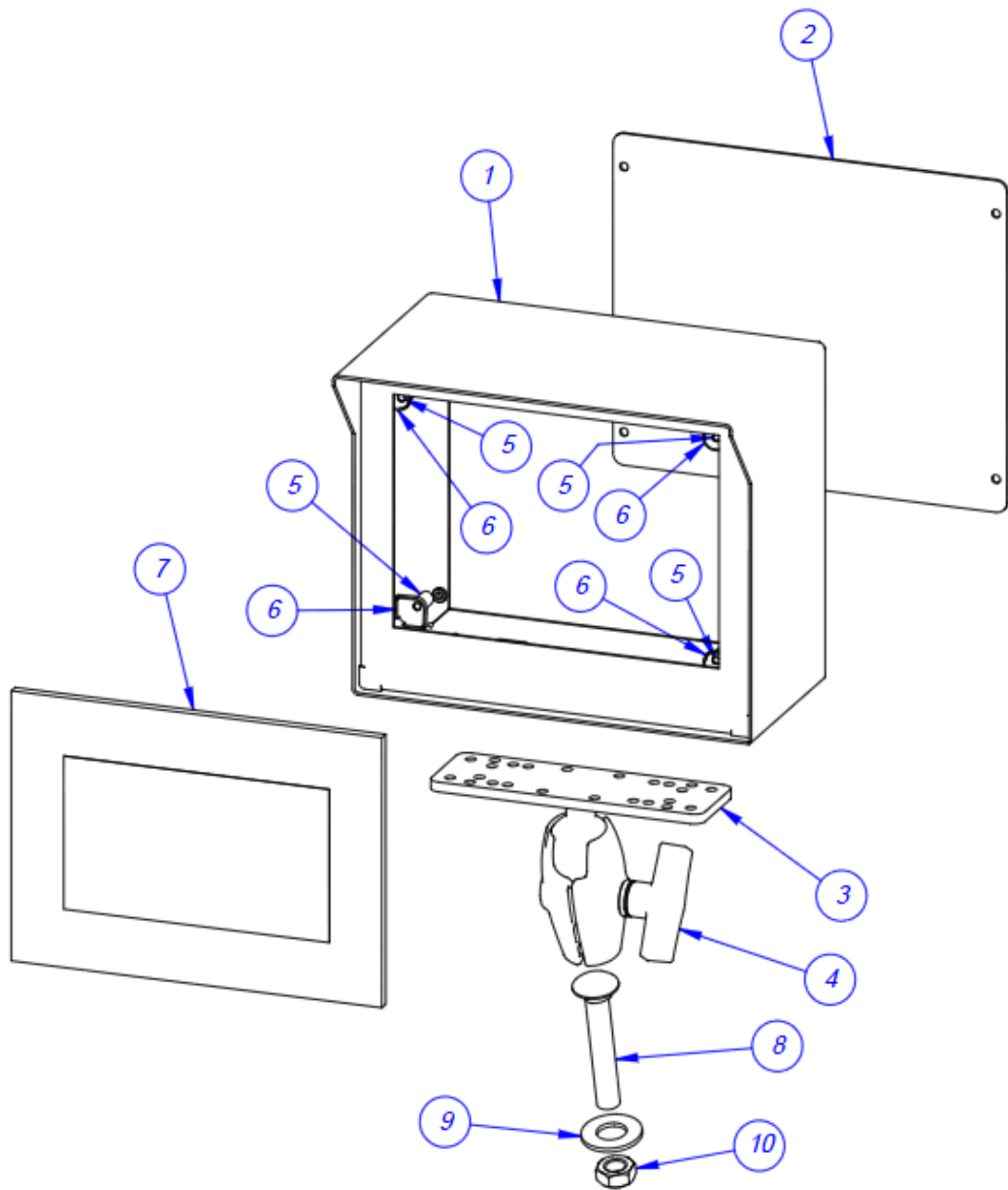
ITEM	QTY.	PART NO.	DESCRIPTION
1	1	TP-T1MC00006-S14	ELECTRONICS MOUNTING PANEL
2	1	TP-205108	FILTER
3	1	TP-207216	FUSE HOLDER
4	1	TP-212338	10-PIN FEMALE
5	2	TP-212247	9-PIN D-SUB FEMALE
6	1	TP-212410	RECEPTACLE, SNAP-IN QC TABS
7	1	TP-213361	24VDC, 3AMP POWER SUPPLY
8	1	TP-215000A	COVER
9	1	TP-215000	SOLID STATE RELAY
10	1	TP-211386	HIGH VOLTAGE TRANSFORMER
11	1	TP-T1ME00301	HIGH VOLTAGE BOARD
12	1	TP-501175-1	MOTOR DRIVE
13	1	TP-215384	POWER SWITCH
14	2	TP-214279	STAND-OFF
15	18	TP-208142	LARGE TERMINAL BLOCK
16	1	TP-218021	DIN RAIL
17	4	TP-214268	STAND-OFF .38"
18	1	TP-215005	ALLEN BRADLEY LOTO SWITCH
19	1	TP-T1MC00021	TRANSFORMER MOUNTING PLATE
20	1	TP-212160	5-POS MINI DIM
21	1	TP-T1MC00002S14	ANGLE MOUNT (5) PHASE DRIVER
22	1	TP-T1MC00016S14	ELECTRONICS MOUNTING BRACKET
23	1	TP-212248	25-PIN D-SUB FEMALE
24	1	TP-218020	DIN RAIL
25	1	TP-220511	PLC, FPO-E32T-A EXPANSION I/O
26	1	TP-220514	PLC, FPO-E32T-A EXPANSION I/O
27	1	TP-T1MO00228	T-1000 EURO DISCONNECT SWITCH MTG. PLATE
28	2	TP-T1MO00229	STANDOFF
29	1	TP-215530	SOLID STATE RELAY
30	1	TP-212166	6-PIN MALE CONNECTOR
31	1	TP-212338	10-PIN FEMALE
32	1	TP-220519	THERMOCOUPLE MODULE
33	1	TP-212266	CONNECTION RECEPTACLE
34	1	TP-215004	ALLEN BRADLEY LOTO KNOB
35	1	TP-215115 & 215116	AUX RELAY & SOCKET
36	1	TP- 112240	POWER CORD STRAIN RELIEF
37	1	TP- 215400	ETHERNET COUPLER
38	1	TP-T1MC00008-S14	ELECTRONIC BACK PANEL OVERLAY

IOP Control Case, Horizontal S-18

TA-T1-10240H

ITEM NO.	QTY.	PART NO.	DESCRIPTION
1	1	TP-T1MD00040	TOUCH SCREEN HOUSING
2	1	TP-T1MD00040-1	BACK COVER
3	1	TP-111131	BALL GRIP POSITIONING ARM
4	1	TP-111125-2	SOCKET ARM
5	4	PART OF TP-220363	SCREEN STUD
6	4	PART OF TP-220363	SCREEN CLIP
7	1	TP-220364	TOUCH SCREEN
8	1	TP-103474	MODIFIED BOLT
9	1	TP-102147	WASHER, 5/8 FLAT
10	1	TP-101125	1/2-13 HEX JAM NUT

IOP Control Case

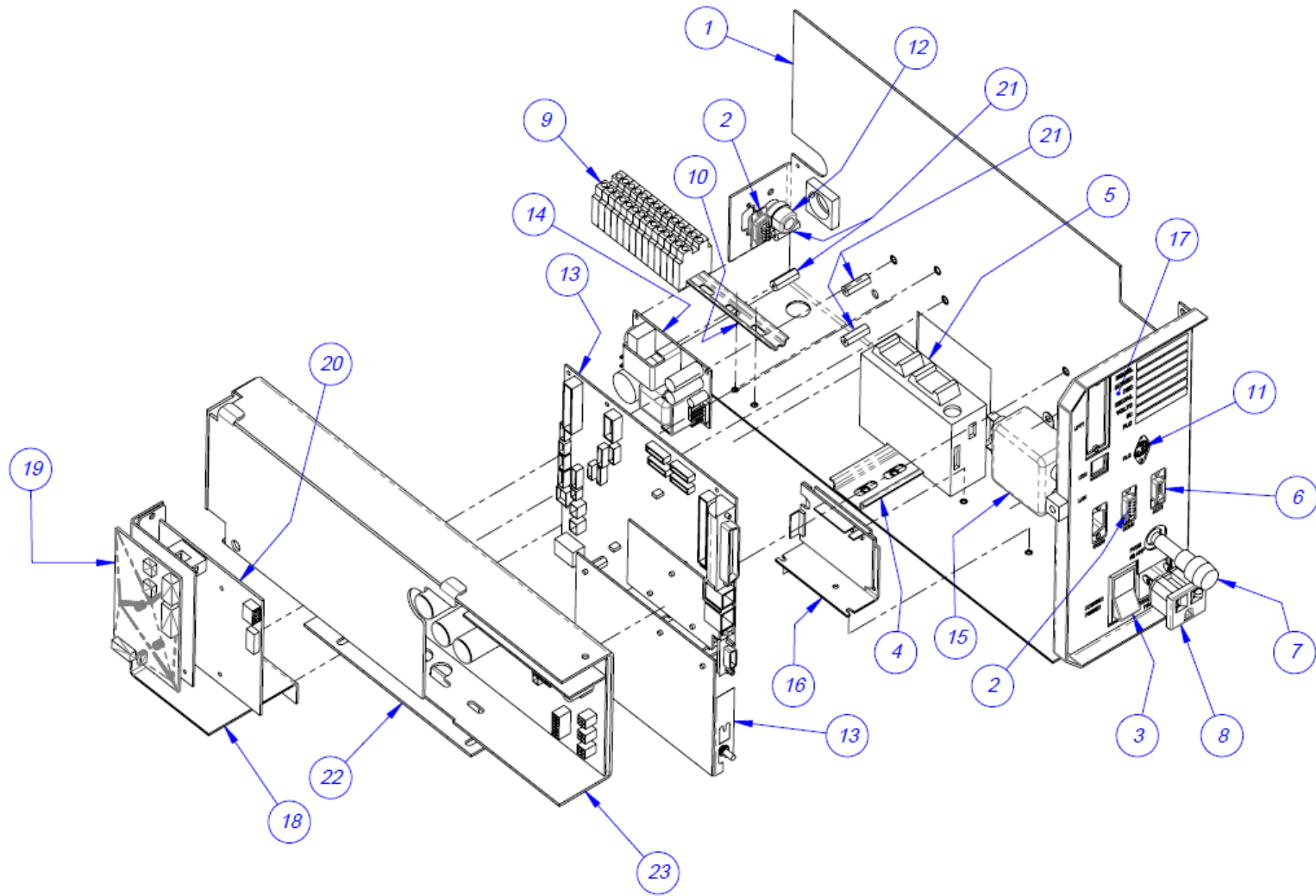


Ti-1000Z Electronic Panel Assembly

TA-T2Z-1000

ITEM NO.	QTY.	PART NO.	DESCRIPTION
1	1	TP-T2Z1005	ELECTRONICS BASE
2	2	TP-212247	9-PIN D-SUB FEMALE
3	1	TP-215384	POWER SWITCH
4	1	TP-218020	DIN RAIL
5	1	TP-220511,214111,220513	PLC, BATTERY & COMM 2 CAS
6	1	TP-212246	CONNECTOR, MULTIPOLE RECTANGULAR
7	1	TP-207216, TP-207344	FUSE HOLDER & FUSE
8	1	TP-212410	AC OUTLET
9	14	TP-208142	LARGE TERMINAL BLOCK
10	1	TP-218021	DIN RAIL
11	1	TP-212160	5-POS MINI DIM
12	1	TP-112240	POWER CORD STRAIN RELIEF
13	1	V-Z-113-8K1-00070	LOGIC BOARD
14	1	TP-213361	24VDC, 3AMP POWER SUPPLY
15	1	TP-205108	EMI FILTER, CORCOM
16	1	TP-501156	DC MOTOR DRIVE, DRIVEN PRINT ROLL
17	1	TP-T2Z1007	OVERLAY
18	1	TP-T2Z1004	APPLICATOR BOARD MOUNT
19	1	VP-Z-P1011156	xi4 24-28V APPLICATOR INTERFACE
20	1	VP-Z-57389M	APPLICATOR INTERFACE ASSEMBLY 24V
21	4	TP-214273	STAND-OFF, NYLON,
22	1	TP-T2Z1018	POWER SUPPLY MOUNT
23	1	VP-Z-1058301	ZEBRA POWER SUPPLY

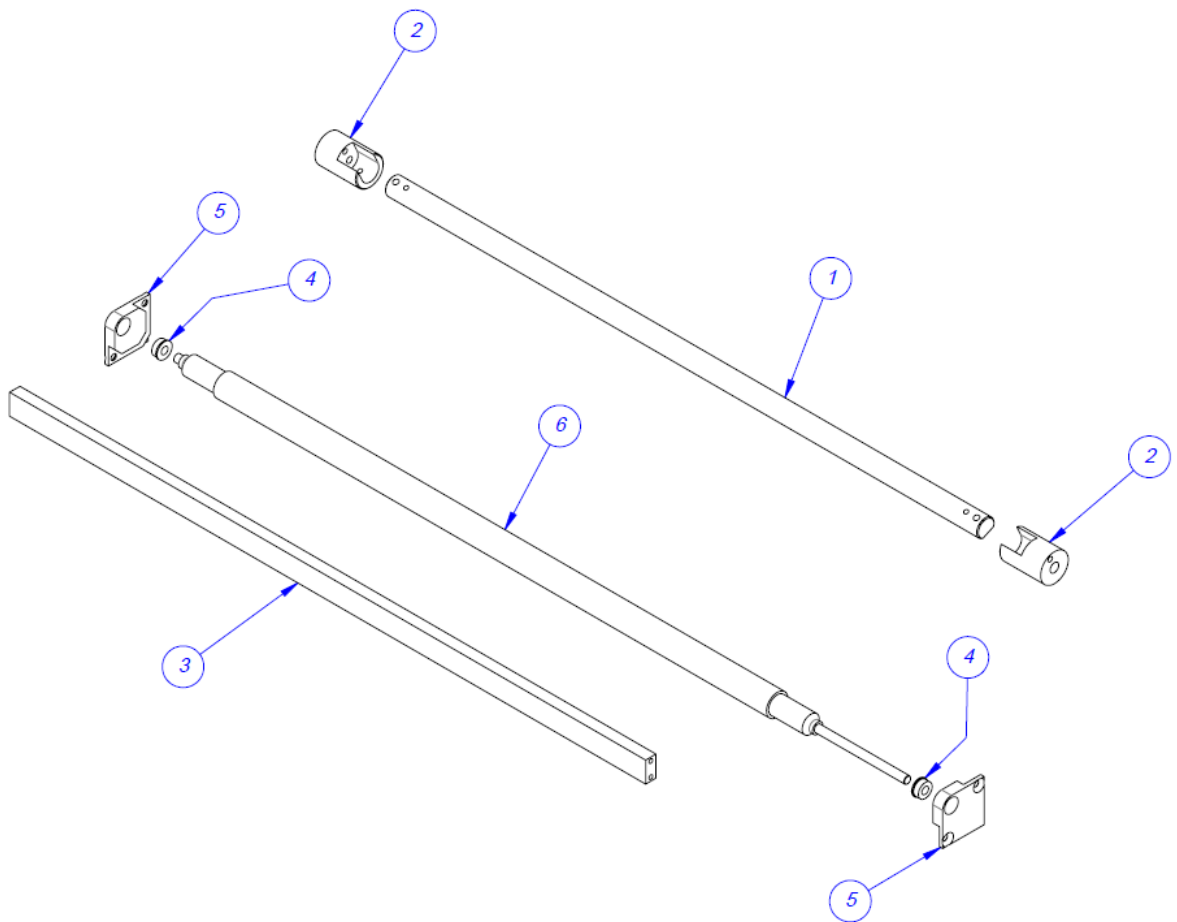
Ti-1000Z Electronic Panel Assembly



Printer Mounting Assembly

TA-T2Z2000NB-S18

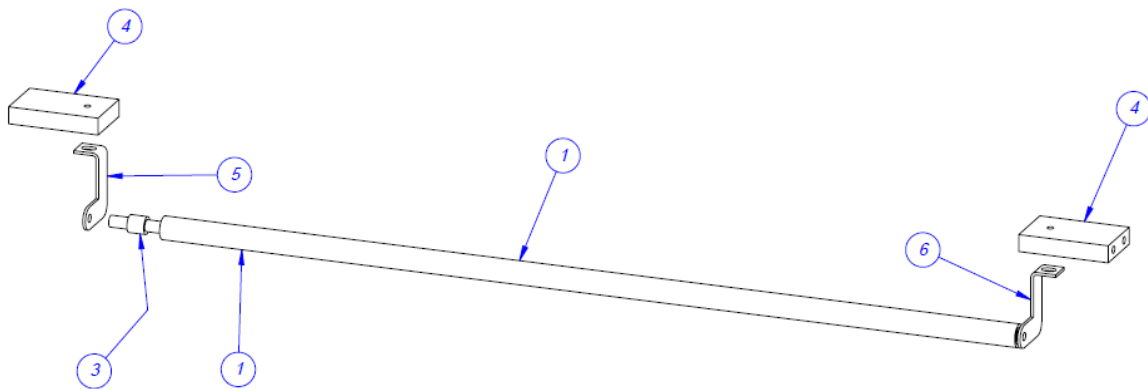
ITEM NO.	QTY.	PART NO.	DESCRIPTION
1	1	TP-T2Z2004-S18	PIVOT SHAFT
2	2	TP-T14M1035	GUIDE ROD HOLDER
3	1	TP-T2Z2005NB-S18	LATCH BAR
4	2	TP-504097	BEARING
5	2	TP-T2Z2011NB	BEARING PLATE
6	1	TP-T2Z2006NB	DRIVEN PRINT ROLL



Upper Roller Assembly

TA-T10002-S18

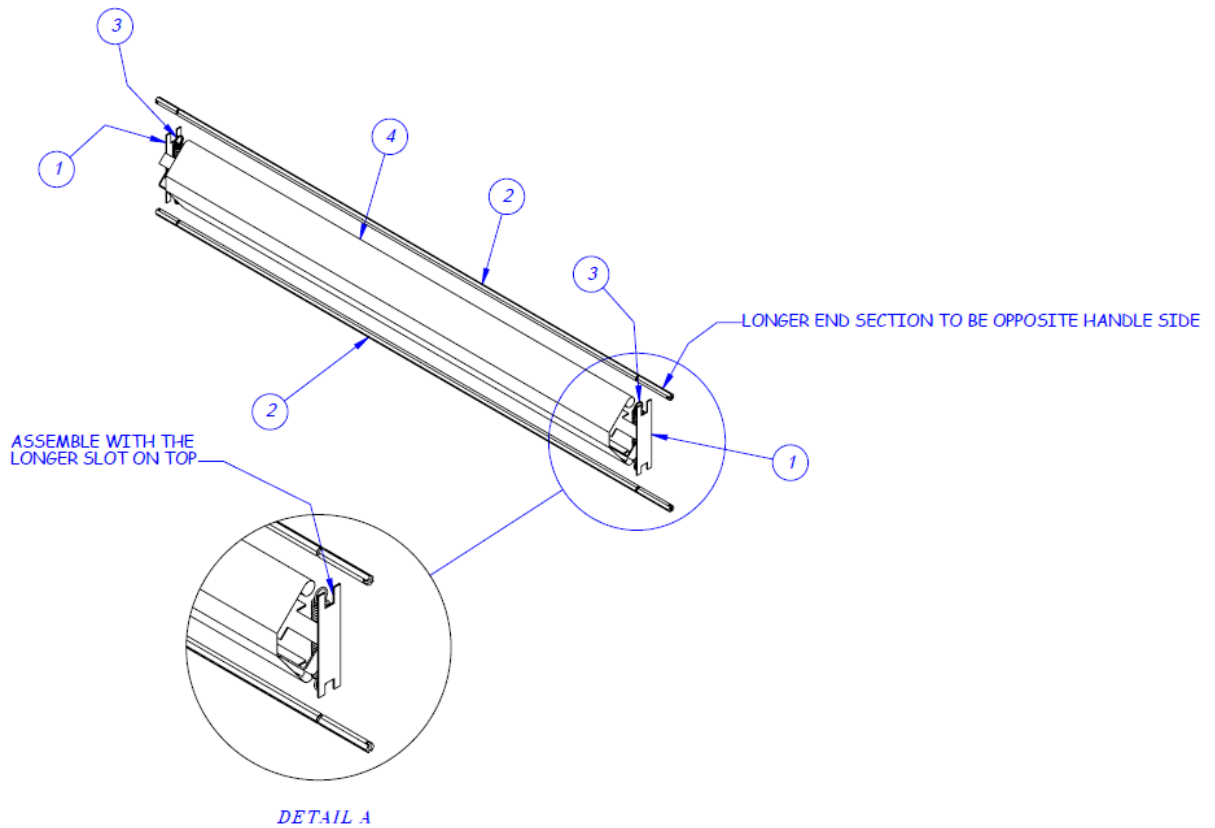
ITEM NO.	QTY.	PART NO	DESCRIPTION
1	1	TP-T1MC00119W18-1	FILM WEB ROLLER-WIDE
2	1	TP-T1MC00120W18-1	FILM WEB ROLLER SHAFT-WIDE
3	2	TP-107177	1/4 ID, 3/8 OD, .375 LONG
4	2	TP-T1MC00018-S14	ROLLER MOUNT
5	1	TP-T1MC00118-1	FILM WEB ROLLER BRACKET LEFT
6	1	TP-T1MC00118-2	FILM WEB ROLLER BRACKET RIGHT



PTFE Guide Assembly

TA-T1-10009-W18

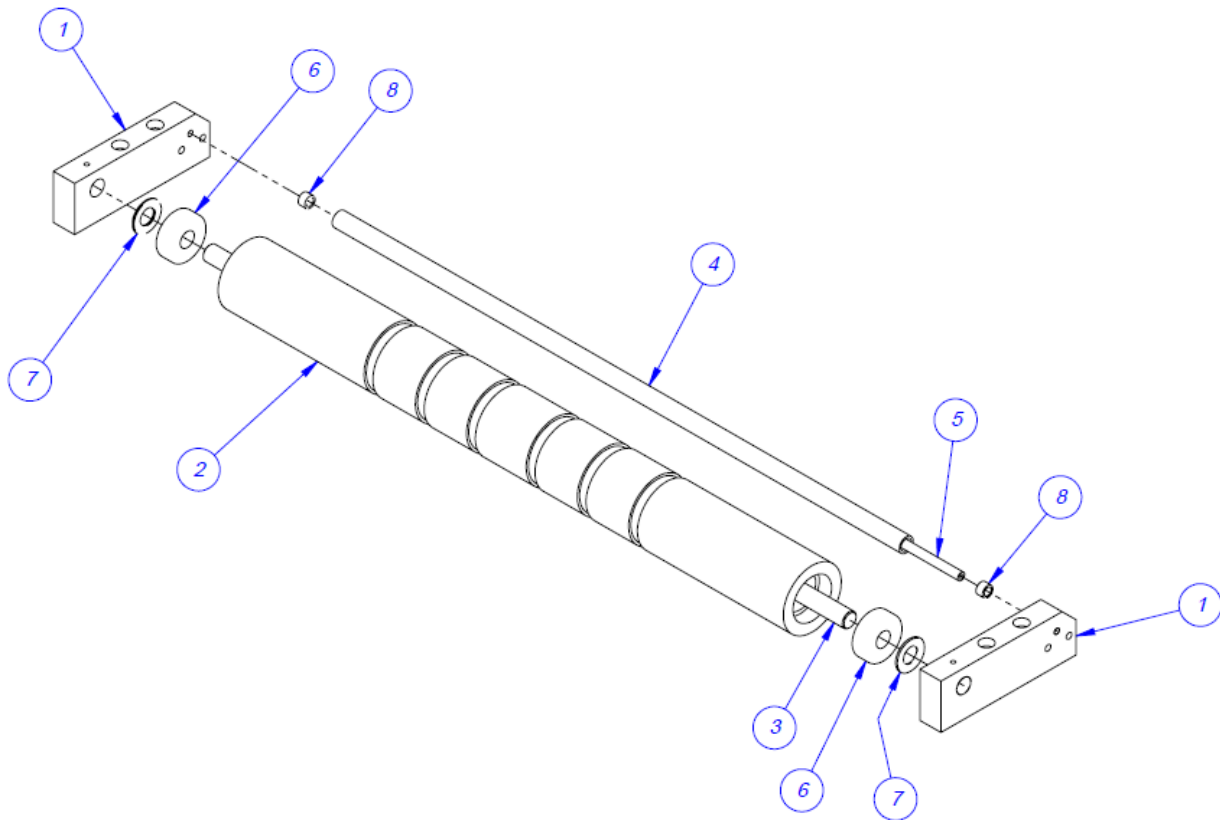
ITEM NO.	QTY.	PART NO	DESCRIPTION
1	1	TP-T1MB00034-W18	PTFE FINGER
2	2	TP-T1MB00040-W18	PTFE HEX ROD
3	2	TP-108089	EXTENSION SPRING
4	1	TP-300500-W18	PTFE



Grooved Roller Assembly

TA-T1-10012-W18

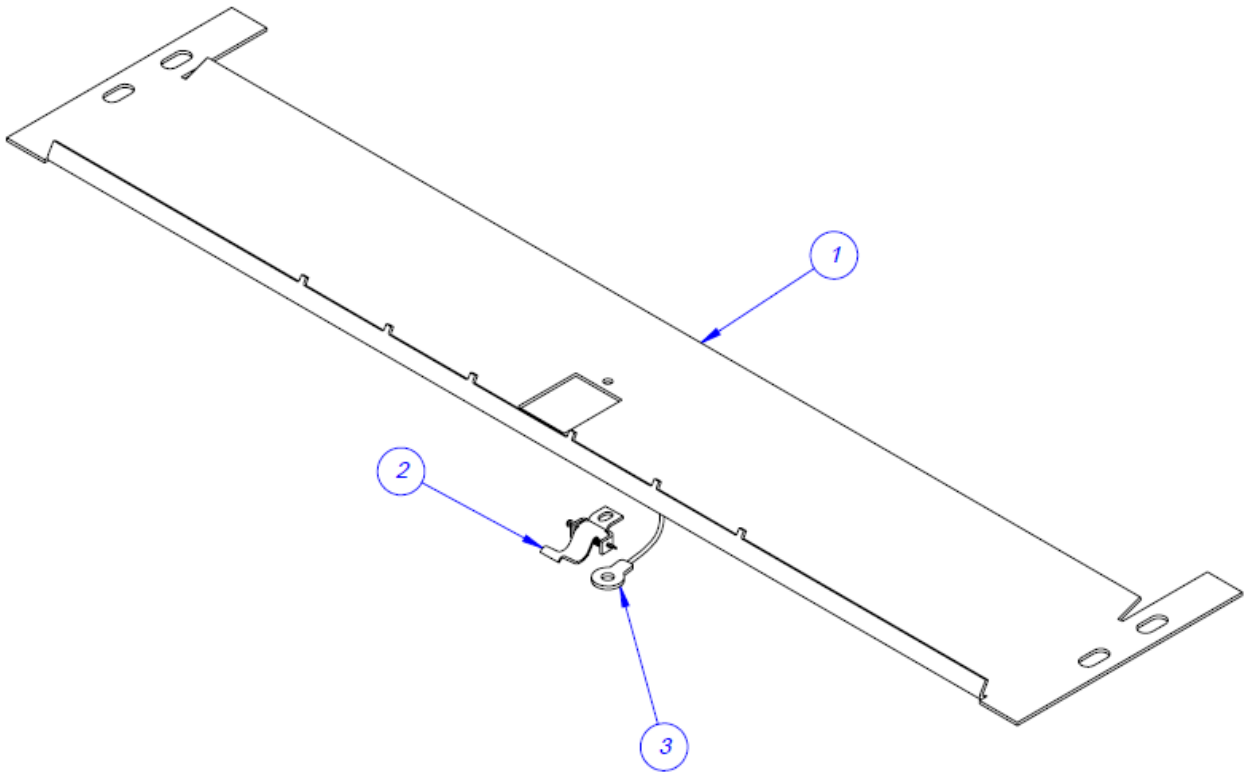
ITEM NO.	QTY.	PART NO	DESCRIPTION
1	2	TP-T1MB00004-W18	ROLLER MOUNTING BLOCK
2	1	TP-T1MB00012-W18	ROLLER, GROOVED METAL
3	1	TP-T1MB00013-W18	ALUMINUM ROLLER SHAFT
4	1	TP-T1MB00155 -W18	FILM WEB TENSION ROLLER
5	1	TP-T1MB00156-W18	FILM WEB ROLLER SHAFT
6	2	TP-504111	BEARING, Nice 1/2 I.D.
7	2	TP-107227	BUSHING, THRUST NYLON
8	2	TP-107163	BUSHING 1/4 ID x 3/8 x 0.250



Bag Finger Ground Assembly

TA-T1-10017-W18

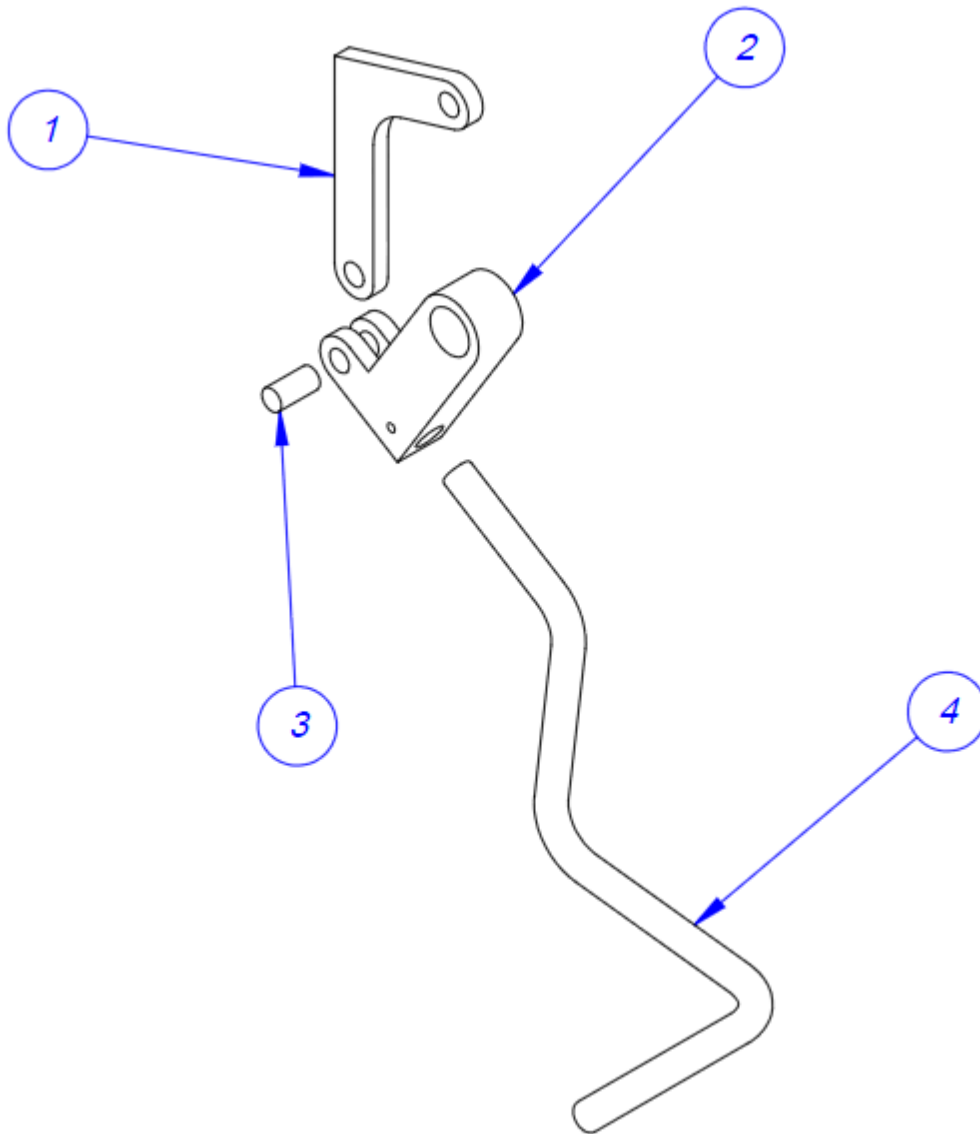
ITEM NO.	QTY.	PART NO	DESCRIPTION
1	1	TP-T1MB00028	GROOVED METAL ROLLER FINGER
2	1	TA-T100124-3	GROUNDING SENSOR
3	1	TP-T1ME00325-1	GROUNDING SENSOR WIRE



Latch Sub Assembly

TA-T1-10019

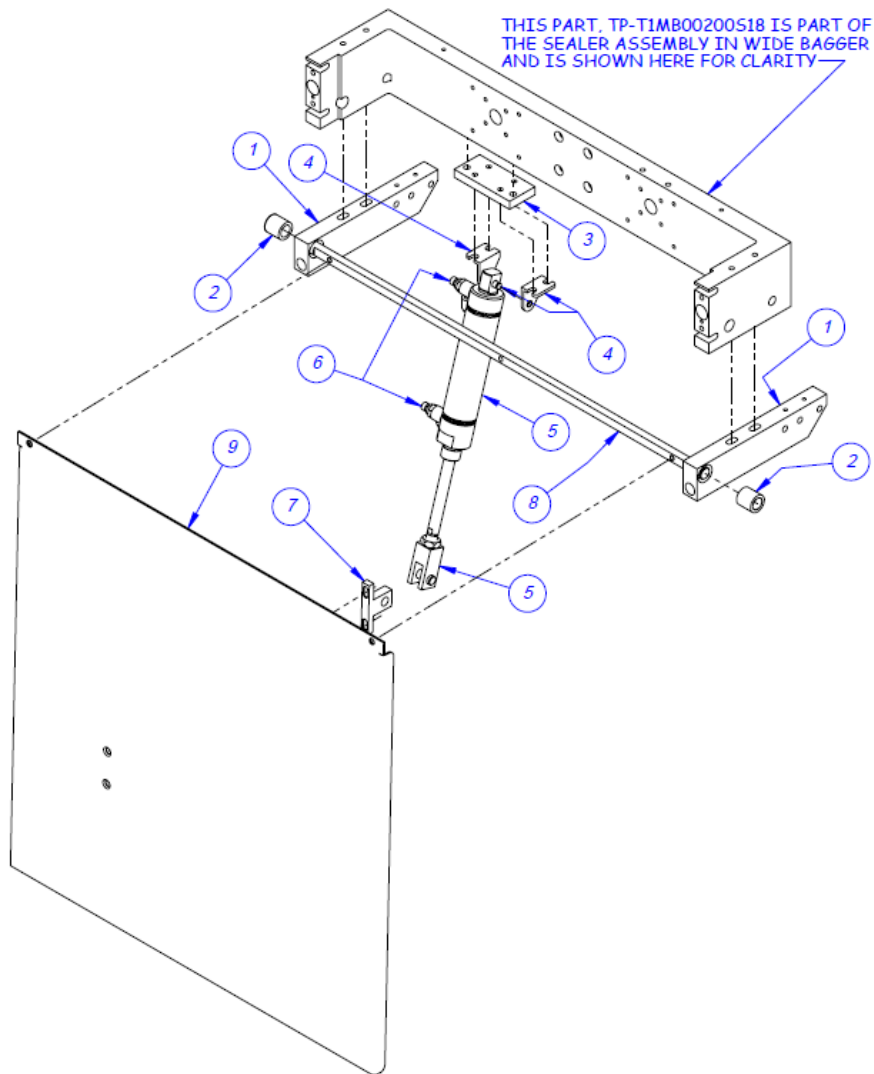
ITEM NO.	QTY.	PART NO	DESCRIPTION
1	1	TP-T1MB00060	LATCH LOCK
2	1	TP-T1MB00061	LATCH CAM
3	1	TP-106135	DOWELL PIN
4	1	TP-T1MB00062	L.H. LATCH HANDLE



HLS-20 Horizontal Drop Plate

TO-T1-HLS20-18

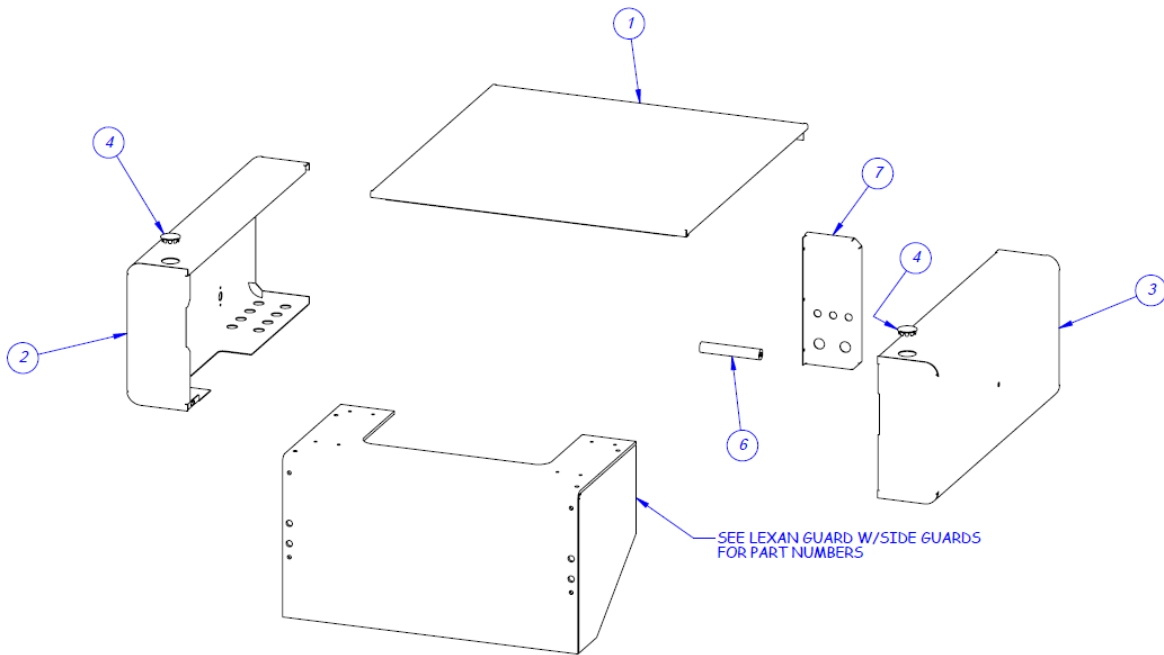
ITEM NO.	QTY.	PART NO.	DESCRIPTION
1	2	TP-T1MB00022HLS	SUPPORT BLOCK
2	2	TP-107126	BUSHING, SLEEVE
3	1	TP-HLS10-11	CYLINDER BLOCK
4	1	TP-403492	MOUNTING BRACKETS
5	1	TP-403489	CYLINDER
6	2	TP-402187	FLOW CONTROL
7	1	TP-HLS10-13	CLEVIS MOUNT
8	1	TP-T1MB00076-W18	LOAD SHELF ROD
9	1	TP-HLS10-12-3	DROP PLATE



Covers

T1-S18NOPRINT

ITEM NO.	QTY.	PART NO.	DESCRIPTION
1	1	TP-T1MD00044-S18	TOP COVER
2	1	TP-T1MD00004-S14	ELECTRONICS COVER
3	1	TP-T1MD00005S14	RIGHT SIDE COVER
4	2	TP-111241	SNAP BUTTON PLUG
6	1	TP-T1MC00082	COVER STAND-OFF
7	1	TP-T1MC00010-S14	PNEUMATICS BACK PANEL



Work Surface

TO-T1-PT50-18

ITEM NO.	QTY.	PART NO.	DESCRIPTION
1	1	TP-HB001	BLOWER VENT
2	1	TP-PT50-001	AIR DIVERTER
3	1	TP-PT50-002-18	WORK SURFACE
4	1	TP-HB008	FAN MOUNT
5	2	TP-HB0024	BLOWER END GUARD
6	1	TP-506000	LOW PROFILE BLOWER
7	1	TP-215384	ROCKER SWITCH
8	1	TP-112240	POWER CORD STRAIN RELIEF
9	4	TP-104145	SPACER
10	2	TO-T1-PB20	OPTICAL TOUCH BUTTONS
11	2	TP-PT50-003-18	WORK SURFACE SUPPORT
12	1	TP-215017	E-STOP SWITCH
13	4	TP-215016	E-STOP BUTTON
14	3	TP-PT50-005	E-STOP MOUNT
15	4	TP-PT50-004	TOUCH SCREEN SPACER
16	1	TP-111241	NICKLE PLATED PLUG 1-1/4"
17	1	TP-111240	NICKLE PLATED PLUG 15/16"
18	1	TP-PT50-006	LIGHT CURTAIN MOUNT (RIGHT)
19	1	TP-PT50-007	LIGHT CURTAIN MOUNT (LEFT)
20	1	TO-T1-LC10	LIGHT CURTAIN
21	1	TP-112238	GROMMET, 3/8"

Note: Item 10, TO-T1-PB20, is for the palm button assembly. The part number for a replacement palm button is TP-216117-1. The palm buttons included the black guard. Replacement guards are available.

