

T-1000-S18

Advanced Poly-Wide Bagger™ Parts Addendum

(Model T-1000-S18)

Version 9 Revision G



1331 Emmitt Road • Akron, OH 44306 • 1-800-754-4403 • fax 330-785-4010 • www.advancedpoly.com

Acknowledgments

Written By: Charles Tolbert, updated by David Kolinski-Schultz
Reviewed By: Stuart Baker

Copyright

2019 (Ver. 9G) 2018 (Ver. 9F) 2018 (Ver. 9E) 2015 (Ver. 9) 2014 (Ver. 8), 2010 (Ver. 7) 2009 (Ver. 6), 2007 (Ver. 5), 2006 (Ver. 4), 2003 (Ver. 3), 2001 (Ver. 2), 1995 (Ver. 1), Advanced Poly-Packaging, Inc. (APPI). All rights reserved.

This manual and the program operating the equipment described in it are copyrighted. You may not copy this manual in whole or part without the consent of Advanced Poly-Packaging, Inc.

All information pertaining to the promotion, sale, distribution, operation and maintenance of the T-1000-S14 ADVANCED POLY-BAGGER including this manual, drawings, schematic, wiring diagrams, VHF video tapes, brochures, specification sheets, figures, charts, or any other information, due to its proprietary design and manufacture remain the property of Advanced Poly Packaging, Inc. Unauthorized duplication, distribution or disclosure to third parties without the express permission of Advanced Poly-Packaging, Inc. is strictly prohibited.

Trademarks

T-1000-S18 is a trademark of Advanced Poly-Packaging, Inc. Advanced Poly-Packaging, Inc. owns also the following trademarks: Advanced Poly-Bags, Advanced Poly-Bagger, Seal-a-Print, Roll-a-Print, Twin-Seal, Advanced Poly-Pack, Advanced Poly-Bag, and Advanced Bag.

Limited Warranty and Disclaimer

Warranty period is 12 months or 1,000,000 cycles whichever comes first. The warranty commences on the date of delivery of the equipment to the Purchaser. APPI warrants to the Purchaser that the equipment is free from defects in workmanship or material under normal use and service. During the warranty period, APPI agrees to repair or replace, at its sole option, without charge to Purchaser, any defective component part of the equipment. To obtain service, Purchaser must return the equipment or component to APPI or an authorized APPI distributor or service representative in an adequate container for shipping. Any shipping charges, insurance, or other fees must be paid by Purchaser and all risk for the equipment shall remain with Purchaser until such time as APPI takes receipt of the equipment. Upon receipt, APPI, the authorized distributor or service representative will promptly repair or replace the defective component and then return the equipment or component to Purchaser, shipping charges, insurance, and additional fees prepaid. APPI may use reconditioned or like new parts or units, at its sole option, when repairing any component or equipment. Repaired products shall carry the same amount of outstanding warranty as from original purchase. Any claim under the warranty must include a dated proof of delivery. In any event, APPI's liability for defective components or equipment is limited to repairing or replacing the components. This warranty is contingent upon proper use of the equipment by Purchaser and does not cover: expendable component part such thermocouple wire, heater cartridge, rollers, bushings, and the like; or if damage is due to accident, unusual physical, electrical or electromechanical stress, neglect, misuse, failure of electric power, water damage (from airlines), improper environmental conditions, transportation, tampering with or altering of the equipment, packaging of corrosive or contaminating products or other products damaging to components, and equipment or components not owned or in the possession of original Purchaser. APPI will not be liable for loss of production, profits, lost savings, special, incidental, consequential, indirect, or other similar damages arising from breach of warranty, breach of contract, negligence, or their legal action even if APPI or its agent has been advised of the possibility of such damages or for any claim brought against the Purchaser by another party. This warranty allocates risks of equipment failure between Purchaser and APPI. APPI's pricing reflects this allocation of risk and the limitations of liability contained in this warranty. The warranty set forth above is in lieu of all other express warranties, whether oral or written. The agents, employees, distributors, and dealers of APPI are not authorized to make modifications to this warranty, or additional warranties binding on APPI. Accordingly, additional statements such as dealer advertising or presentations, whether oral or written, do not constitute warranties by APPI and should not be relied upon. Warranty on equipment is considered void when outstanding balances become delinquent (over 30 days late - 60 days after ship date). Equipment Integration to other Equipment: APPI assumes no responsibility for the integration of its products to other products or within a system unless APPI performs the integration, testing and provides the results of the tests to the purchaser in writing. Furthermore, APPI assumes no responsibility for bag sizing whether suggested or recommended.

Table of Contents

Introduction	4
Special Features.....	4
Options and Accessories	4
Contact Information	4
Warranty Registration	5
Wide Bagger System Layout.....	6
Base Assembly	8
Upper Column Assembly	9
Covers.....	10
Lexan Guard – Wide	11
Flat Load Shelf Assembly	12
Dancer Assembly	13
Dancer Guide Subassembly	15
Guide Roller Assembly	15
Main Frame Assembly	17
Upper Roller Assembly.....	19
Air Knife Assembly Wide.....	20
Sealer Frame Assembly.....	21
Pressure Bar Assembly.....	23
Heater Bar Assembly	24
PTFE Guide Assembly.....	25
Grooved Roller Assembly.....	26
Bag Finger Ground Assembly.....	27
Latch Sub Assembly.....	28
Manifold Assembly	29
Electrical Panel T-1000-S14 & -S18.....	30

Introduction

Thank you for upgrading your packaging facilities with a T-1000-S18 Advanced Poly-Wide Bagger. Our equipment, materials and services are designed to take your packaging capabilities to the next level. The T-1000-S18 Advanced Poly-Wide Bagger has all the standard features of the T-1000-S14, but has a wider pass through area that allows products that require a larger width in bag size to be packaged with ease. This manual addendum contains information specific to the T-1000-S18 wide bag configuration. For a full description of the standard functions, maintenance, and adjustments of the T-1000 please refer to the included T-1000-S14 Version 9 Operation Manual.

Special Features

In addition to the many features of the T-1000 bagger, the T-1000-S18 Wide Bagger features:

Extended Bag Widths: With a wider pass through area, the T-1000-S18 can run with bags up to 18” wide. This is great for packaging tiny pieces in bulk or for larger items that require more space.

Versatility with APPI equipment: The Wide Bagger can be used with the full range of Advanced Poly-Packaging bagging equipment, from scales to counters to conveyers. Contact your APPI Machine Sales Representative for more information.

Options and Accessories

The T-1000-S18 can be configured with a number of Available Options. See a full list of Available Options in the T-1000 manual or contact a sales rep for more information.

Contact Information

To better serve your bagging needs, call **(330) 785-4000** or toll free **1-(800) 754-4403** for convenient service solutions, Monday through Thursday, 9:00 AM to 5:30 PM EST, or Friday 9:00 AM to 5:00 PM EST. For technical assistance with current machinery, ask for **Service**. To order spare parts for your system, ask for **Parts**. To order auxiliary equipment for your current system, ask for **Machine Sales**. To place an order for bags, ask for **Bag Sales**. You may also contact any of these departments by email:

Reach Service at Service@advancedpoly.com

Reach Parts at Parts@advancedpoly.com

Reach Machine Sales at MachineSales@advancedpoly.com

Reach Bag Sales at Bagsales@advancedpoly.com

For general inquires: Sales@advancedpoly.com

Or visit us online at www.advancedpoly.com

In order to provide the best service possible, please have model and serial number ready

Warranty Registration

This section must be completed and returned to Advanced Poly-Packaging, Inc. to register the T-1000 Bagger for Warranty Protection.

Serial Number:

(Serial Number located on the back panel)

Company Name and Address

Contact Name(s) / Title(s) / Phone Number

<hr/> <hr/> <hr/>	<hr/> <hr/> <hr/>
-------------------	-------------------

Please email, fax, or mail this page to:

Service Manager
Advanced Poly-Packaging, Inc.
1331 Emmitt Road
Akron, OH 44306
USA

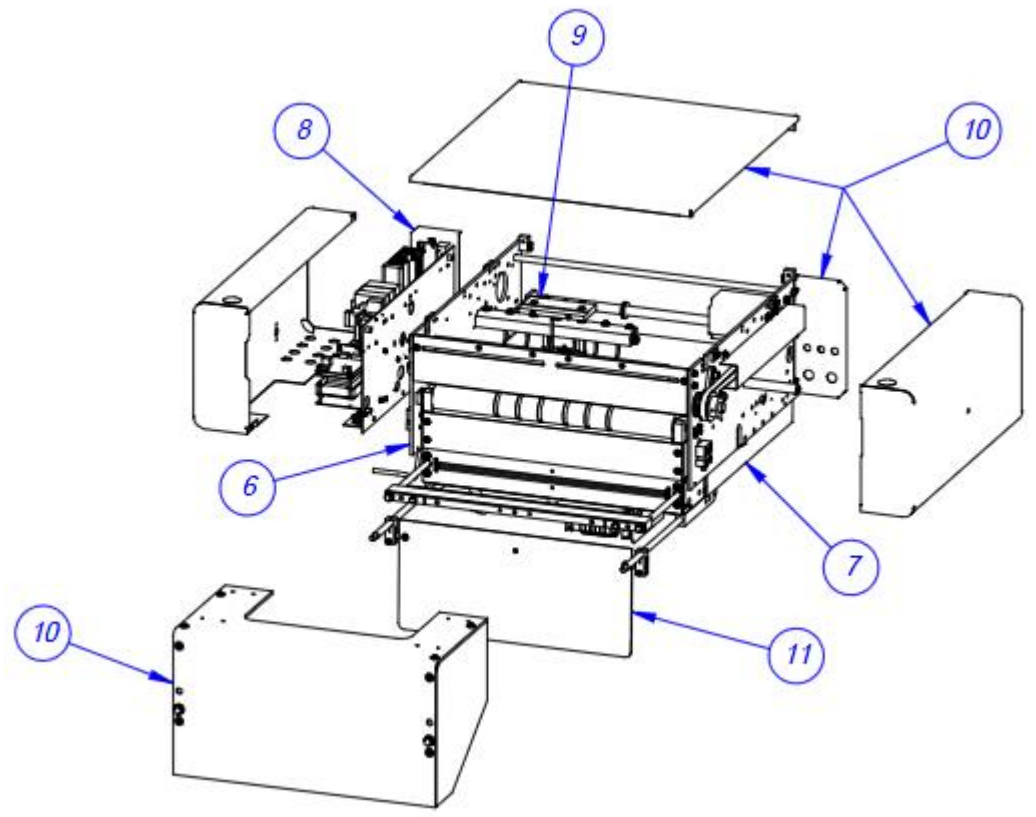
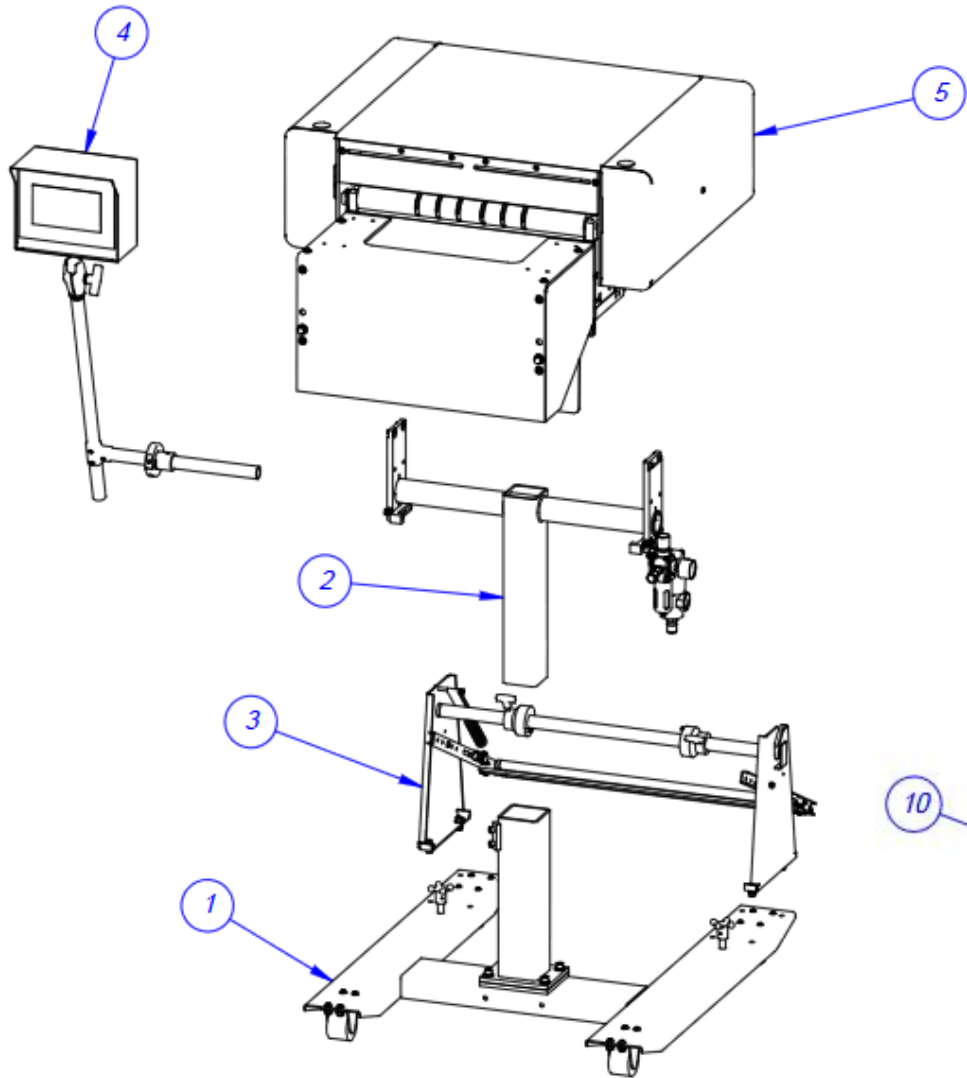
Fax # (USA) 330-785-4010

Email the information above to: Service@advancedpoly.com

Wide Bagger System Layout

T-T1000-S18

ITEM NO.	QTY.	PART NO.	DESCRIPTION
1	1	TA-T1-10200	BASE ASSEMBLY
2	1	TA-T1-10210-S18	UPPER COLUMN ASSEMBLY
3	1	TA-T1-10220-W18	DANCER ASSEMBLY
4	1	TA-T1-10240	TOUCH SCREEN
5	1	SEE ASSEMBLY	BAGGER WITHOUT PRINTER
6	1	TA-T1-10250-S18NB	MAIN FRAME-WIDE
7	1	TA-T1-10280-S18	SEALER FRAME-WIDE
8	1	TA-T1-10270-S14C	ELECTRICAL PANEL
9	1	TA-T1-10001-S18	AIR KNIFE ASSEMBLY
10	1	TA-T1-S18NOPRINT	COVERS AND LEXAN GUARD
11	1	TA-T1-10018-W18	LOAD SHELF ASSEMBLY

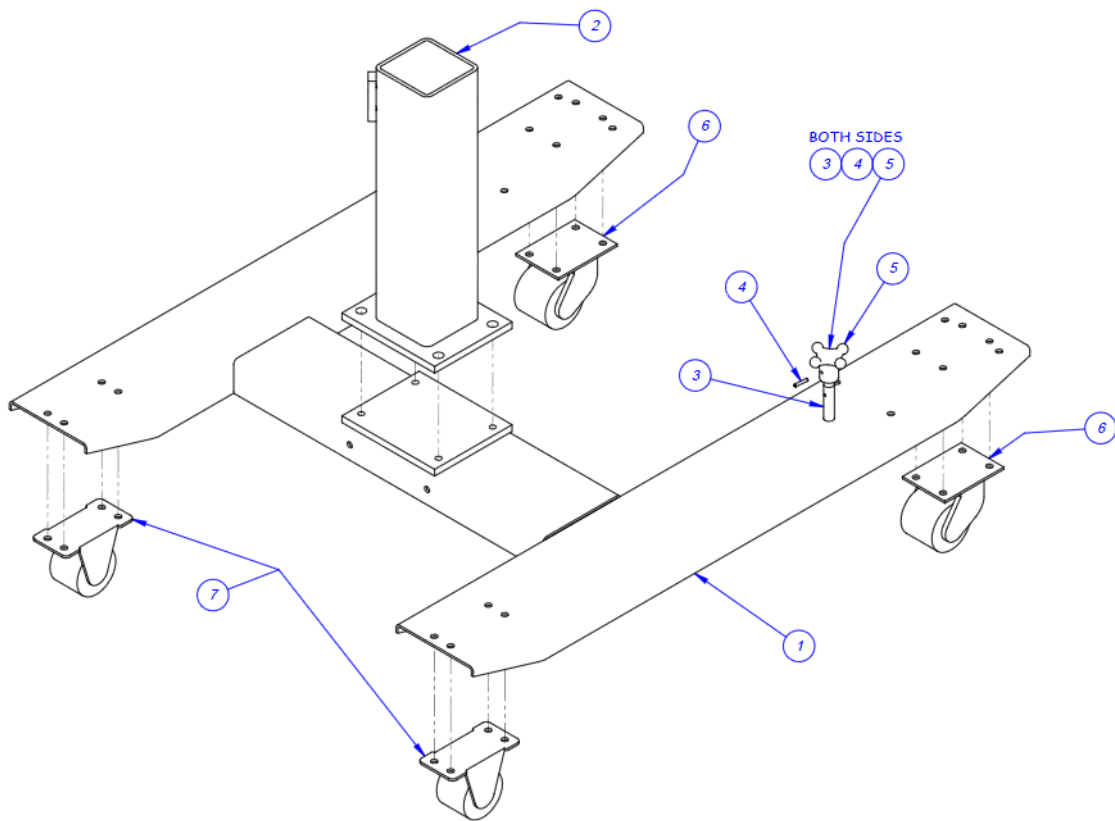


View of inside Bagger

Base Assembly

TA-T1-10200

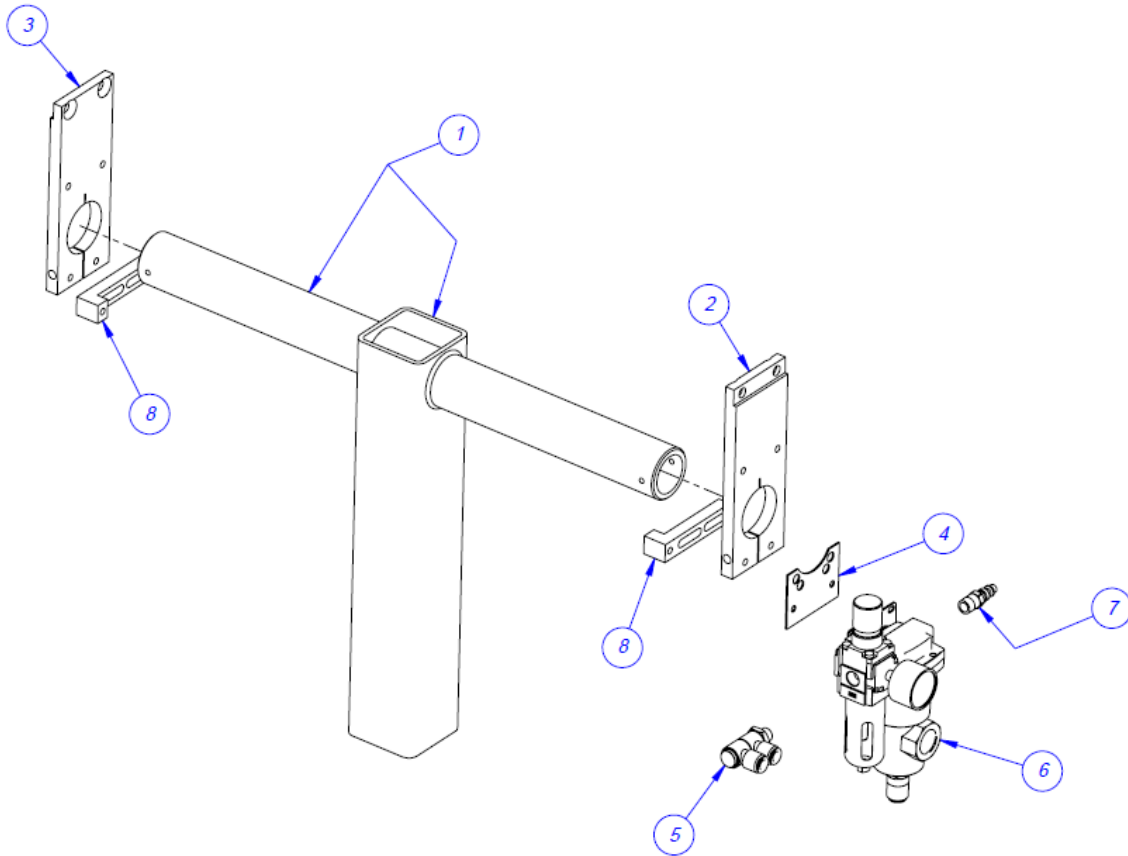
ITEM NO.	QTY.	PART NO.	DESCRIPTION
1	1	TP-T1MA00051	LOWER BASE WELDMENT
2	1	TP-T1MA00051-1	LOWER COLUMN
3	2	TP-106094	STUD, FLOOR LEVELER
4	2	TP-106119	SPRING PIN
5	2	TP-109148	HAND KNOB
6	2	TP-110756	CASTER, SWIVEL
7	2	TP-110763	CASTER, RIGID



Upper Column Assembly

TA-T1-10210-S18

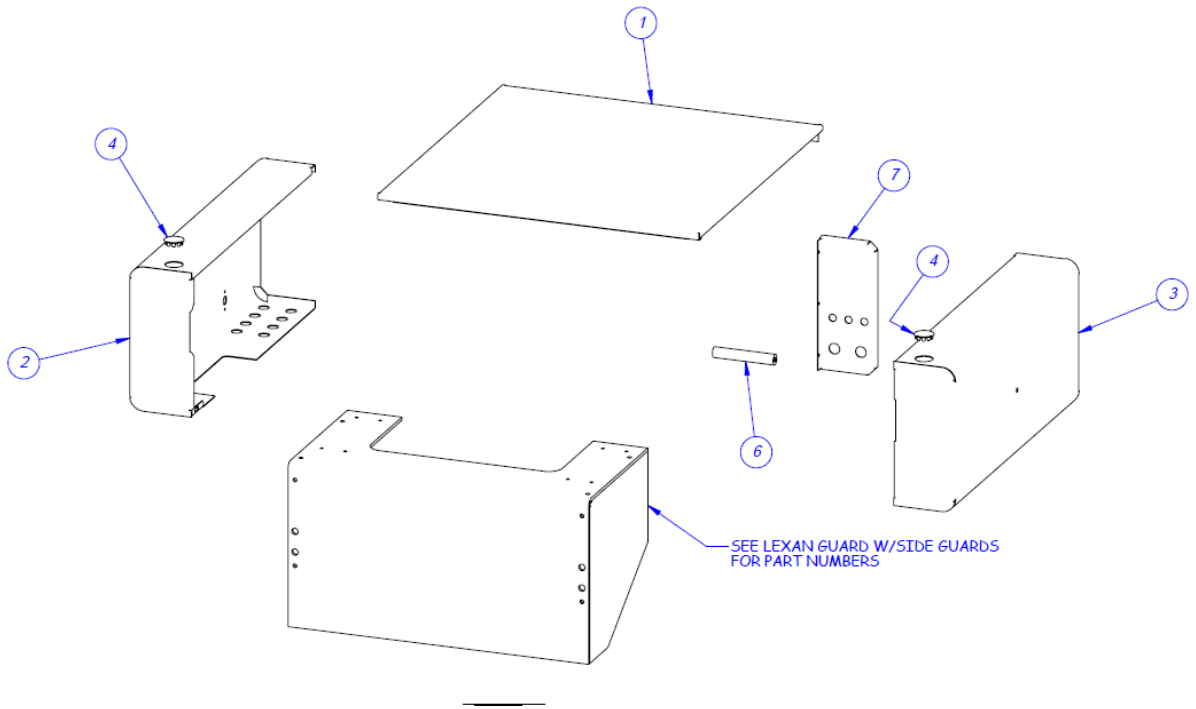
ITEM NO.	QTY.	PART NO.	DESCRIPTION
1	1	TP-T1MA00087	CROSS PIPE
2	1	TP-T1MC00019-1S18	BASE CLAMP (L.H.)
3	1	TP-T1MC00019-2S18	BASE CLAMP (R.H.)
4	1	TP-T1MC00019-3	BRACKET, MOUNTING
5	1	TP-401267	ELBOW, DOUBLE UNIVERSAL
6	1	TP-406260-1	FILTER/DRYER/REG. ASSEMBLY
7	1	TP-401222	HEX NIPPLE
8	2	TP-T1MC00019-4	SPRING MOUNT



Covers

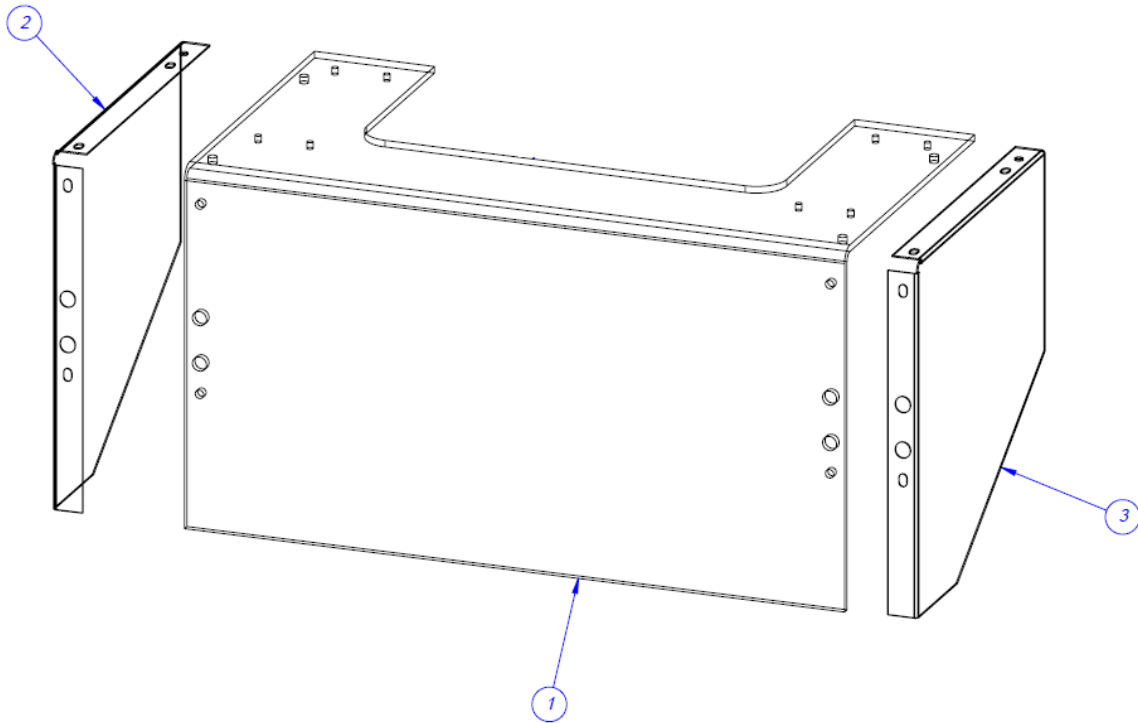
TA-S18NOPRINT

ITEM NO.	QTY.	PART NO.	DESCRIPTION
1	1	TP-T1MD00044-S18	TOP COVER
2	1	TP-T1MD00004-S14	ELECTRONICS COVER
3	1	TP-T1MD00005S14	RIGHT SIDE COVER
4	2	TP-111241	SNAP BUTTON PLUG
6	1	TP-T1MC00082	COVER STAND-OFF
7	1	TP-T1MC00010-S14	PNEUMATICS BACK PANEL



Lexan Guard – Wide

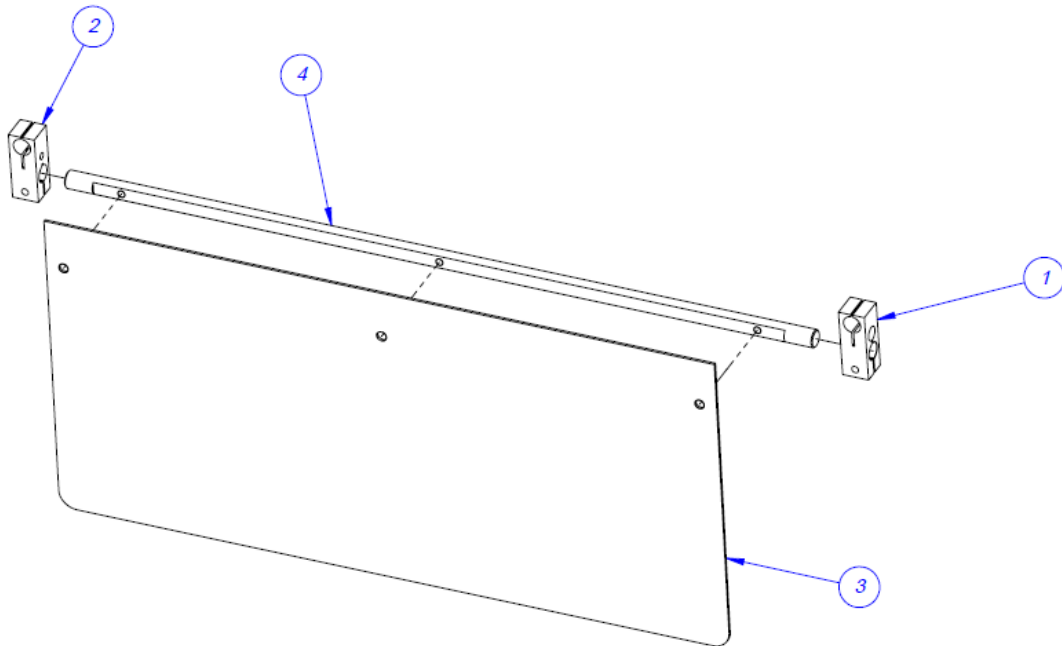
ITEM NO.	QTY.	PART NO	DESCRIPTION
1	1	TP-T1MD00116W18	LEXAN GUARD
2	1	TP-T1MO00226-5	LEXAN GUARD BRACKET (L.H.)
3	1	TP-T1MO00226-6	LEXAN GUARD BRACKET (R.H.)



Flat Load Shelf Assembly

TA-T1-10018-W18

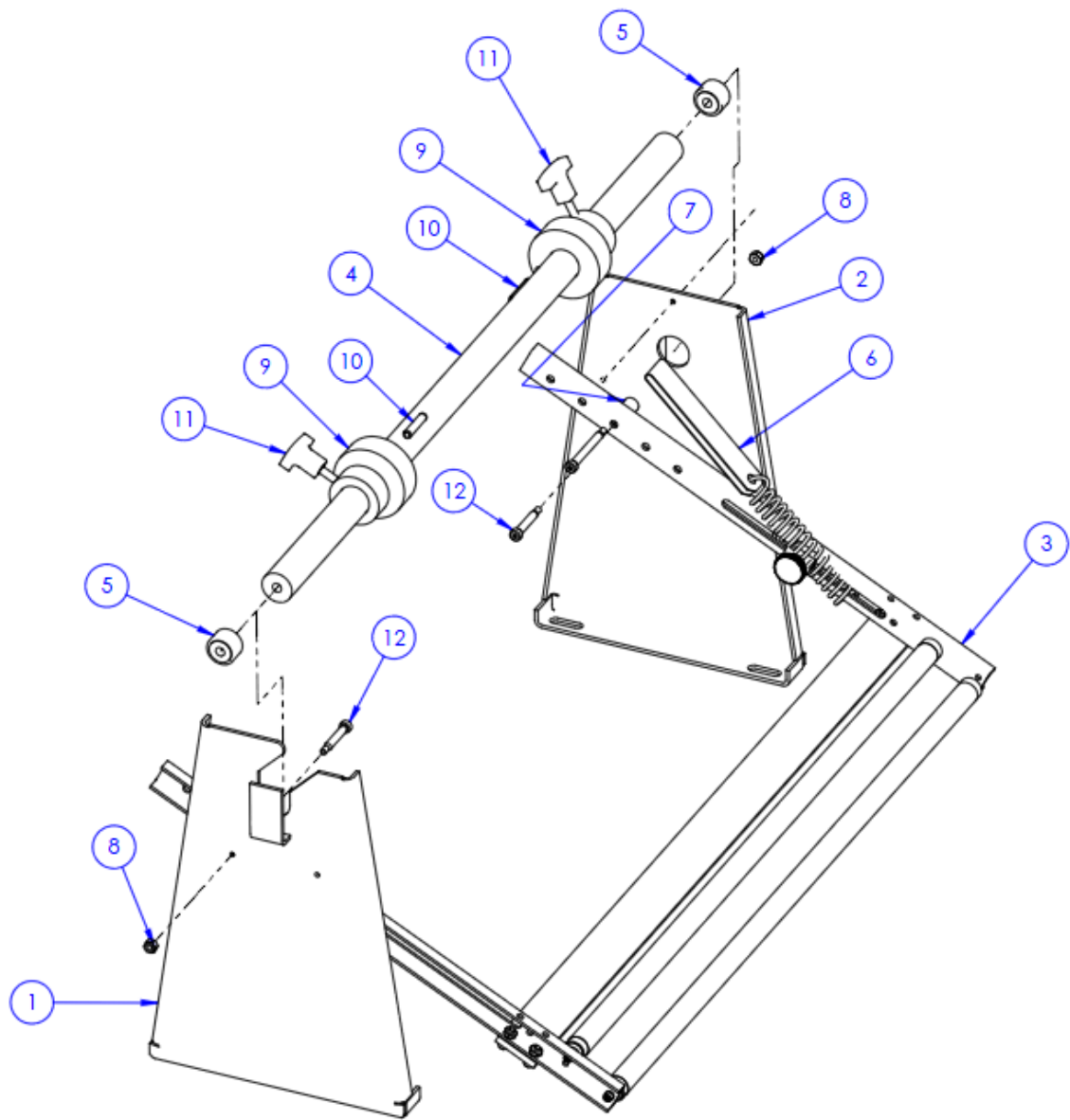
ITEM NO.	QTY.	PART NO.	DESCRIPTION
1	1	TP-T1MB00074-1	LOAD SHELF BRACKET (LEFT)
2	1	TP-T1MB00074-2	LOAD SHELF BRACKET (RIGHT)
3	1	TP-T1MB00075-W18	BACK PLATE
4	1	TP-T1MB00076-W18	FIXED LOAD SHELF ROD



Dancer Assembly

TA-T1-10220-W18

ITEM NO.	QTY.	PART NO	DESCRIPTION
1	1	TP-T1MA00069-1	DANCER SIDE PLATE
2	1	TP-T1MA00069-2	DANCER SIDE PLATE
3	1	TA-T10011-W18	DANCER GUIDE SUB-ASSEMBLY
4	1	TP-T1MA00073-W18	BAG ROLL SHAFT
5	2	TP-504132	CAM FOLLOWER
6	1	TP-T1MA00115	BELT TENSION STRAP & SPRING
7	2	TP-104148	SPACER
8	3	TP-101141	LOCKNUT, HEX #10-24
9	2	TP-T1MA00049	FILM TENSION HUB
10	2	TP-106106	SPRING PIN
11	2	TP-109212-1	"T" KNOB
12	2	TP-103307	SCREW, SHOULDER 1/4"D X 1-1/4"L X 10-24
13	1	TP-103338	SCREW, SHOULDER 1/4 X 2 X 10-24



Dancer Guide Subassembly

TA-T1-10011-W18

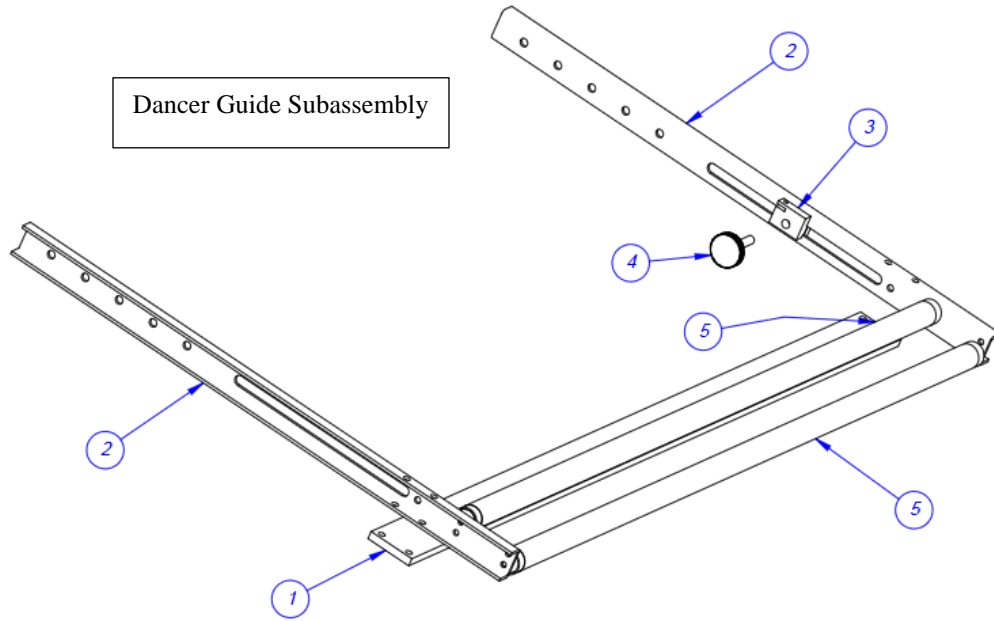
ITEM NO.	QTY.	PART NO.	DESCRIPTION
1	1	TP-T1MA00081-W18	DANCER TENSION BAR CROSS BRACE
2	2	TP-T1MA00072	DANCER TENSION BAR
3	1	TP-T1MA00186	TENSION ADJUSTER
4	1	TP-109212	KNOB
5	2	ASSEMBLY	GUIDE ROLLER ASSEMBLY

NOTE: Not shown is the brake tension strap. Part No. TP-T1MA00115

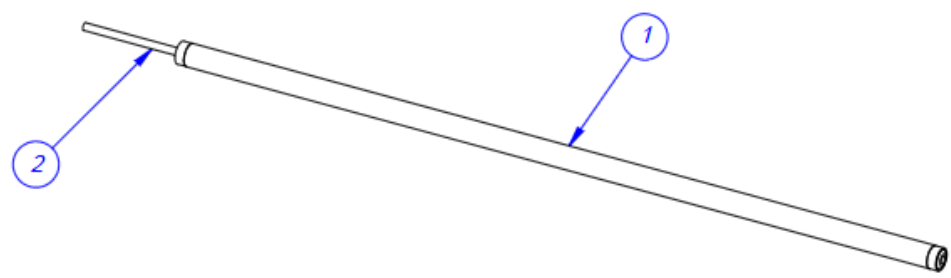
Guide Roller Assembly

ITEM NO.	QTY.	PART NO.	DESCRIPTION
1	1	TP-T1MA00089-W18	DANCER GUIDE ROLLER
2	1	TP-T1MA00090-W18	DANCER GUIDE ROLLER SHAFT

Dancer Guide Subassembly



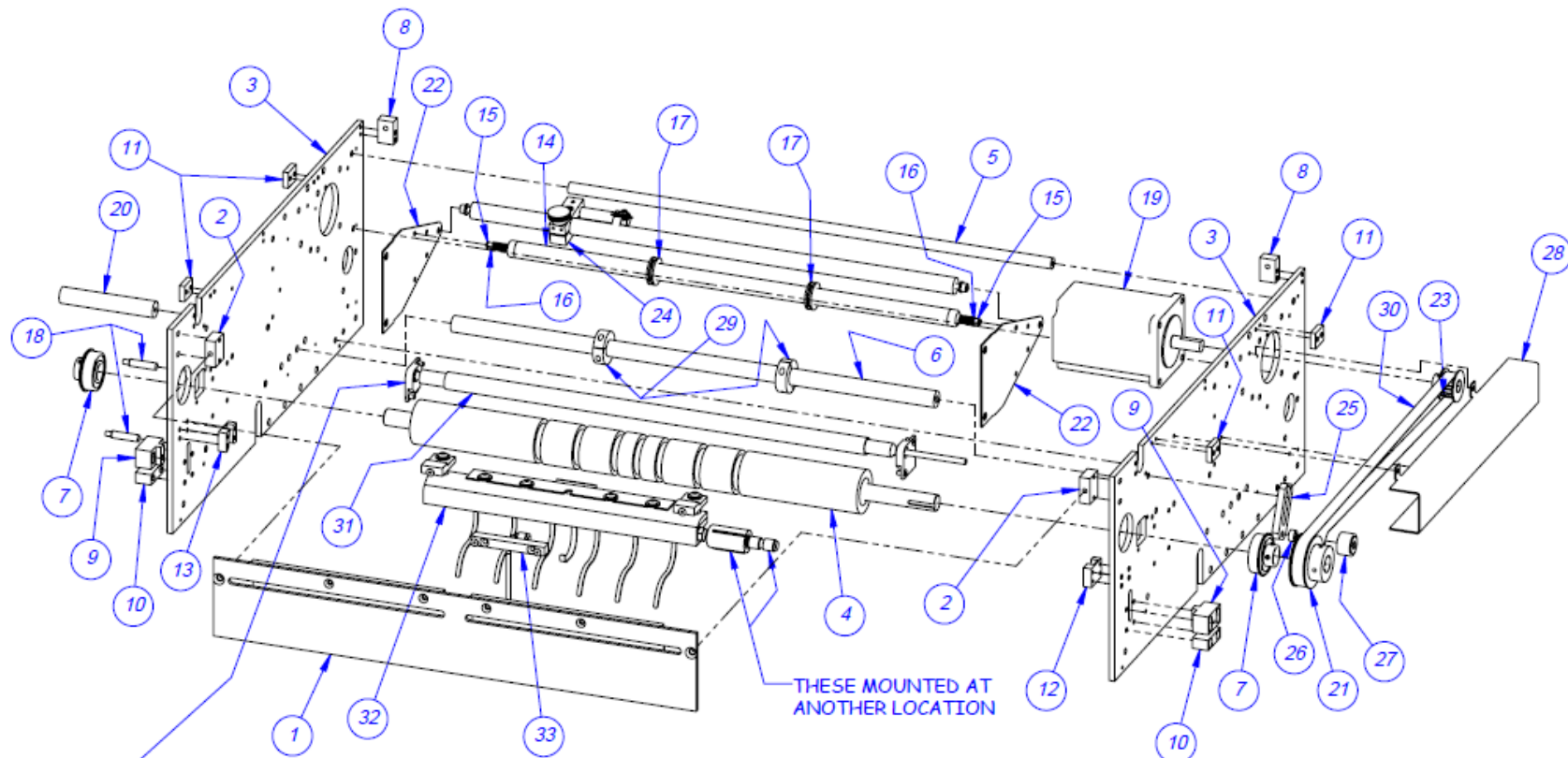
Dancer Roller Assembly



Main Frame Assembly

TA-T1-10250-S18NB

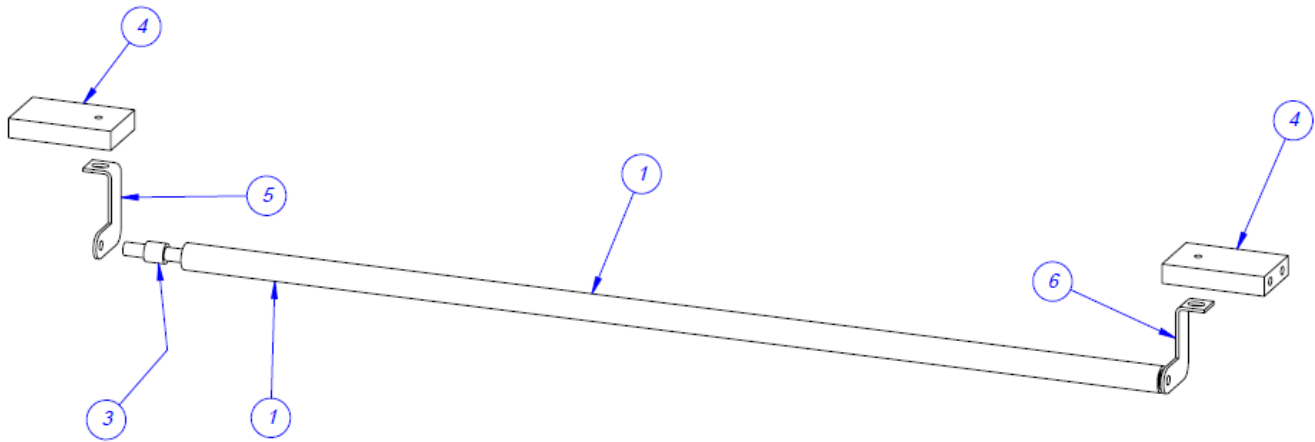
ITEM NO.	QTY.	PART NO	DESCRIPTION
1	1	TP-T1MC00042-S18NB	FACE PLATE
2	2	TP-T1MC00044	FACE PLATE BLOCK
3	2	TP-T1MC00001-S18NB	SIDE PLATE
4	1	TP-T1MC00017-S18NB	RUBBER ROLLER
5	1	TP-T1MC00056-W18	SHAFT, REAR SUPPORT
6	1	TP-T1MC00079-W18	CYLINDER PIVOT SHAFT
7	2	TP-504113	BEARING
8	2	TP-T1MC00099	REAR COVER SUPPORT
9	2	TP-T1MC00059	LATCH LOCK BLOCK
10	2	TP-T1MC00058	LATCH ADJUSTER BLOCK
11	4	TP-T1MC00054	COVER SUPPORT CLAMP
12	1	TP-T1MC00163-1	GUIDE BLOCK (RIGHT)
13	1	TP-T1MC00163-2	GUIDE BLOCK
14	1	TP-T1MC00052-W18	GUIDE ROLLER
15	2	TP-106106	SPRING PIN
16	2	TP-108099	COMPRESSION SPRING, .040
17	2	TP-111010	SPRING CLOSURE COLLAR
18	2	TP-215200	SWITCH, MAGNETIC
19	1	TP-501170	STEPPER MOTOR
20	1	TP-T1MC00082	COVER STAND-OFF
21	1	TP-T1MC00162-S18NB	DRIVEN PULLEY
22	1	TP-T1MC00118-6	EXT PASS BRACKET
23	1	TP-T14M1027NB	MOTOR PULLEY
24	1	TO-T1-BO10	BAG OUT SENSOR ASSEMBLY
25	1	TP- T1MC00091	BELT TENSIONER
26	1	TP-104147	METAL SPACER
27	1	TP-504132	CAM FOLLOWER
28	1	TP-T1MD00050NB	BELT COVER
29	2	TP-111142	CLAMP COLLAR, 2-PC, SPLIT, 3/4" BORE
30	1	TP-503157	BELT
31	1	TA-T2Z2000NB-S18	PART OF PRINTER MOUNTING ASSEMBLY
32	1	TA-T1-10001-S18NB	AIR KNIFE ASSEMBLY - WIDE
33	1	TA-T10001-1NB	AIR PULSE ASSEMBLY



Upper Roller Assembly

TA-T1-10002-S18

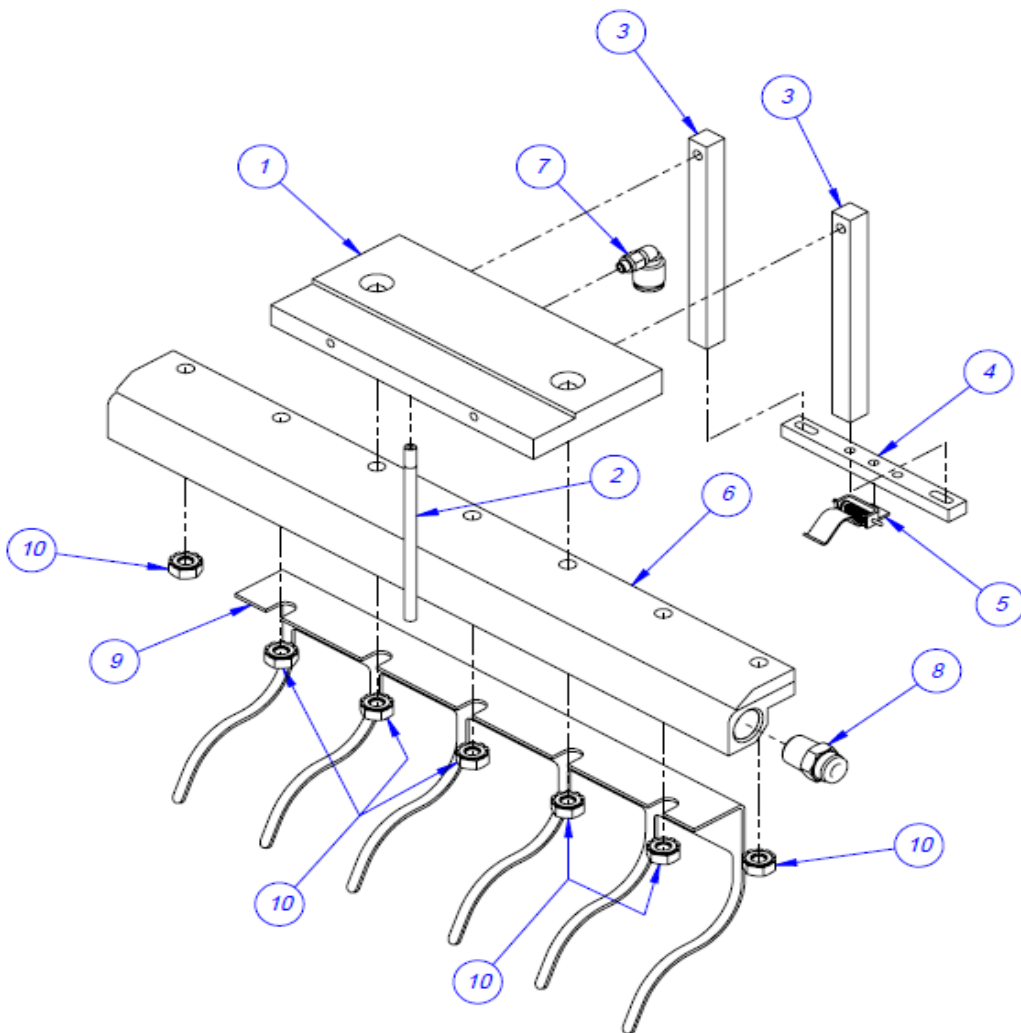
ITEM NO.	QTY.	PART NO.	DESCRIPTION
1	1	TP-T1MC00119W18-1	FILM WEB ROLLER-WIDE
2	1	TP-T1MC00120W18-1	FILM WEB ROLLER SHAFT-WIDE
3	2	TP-107177	1/4 ID, 3/8 OD, .375 LONG
4	2	TP-T1MC00018-S14	ROLLER MOUNT
5	1	TP-T1MC00118-1	FILM WEB ROLLER BRACKET LEFT
6	1	TP-T1MC00118-2	FILM WEB ROLLER BRACKET RIGHT



Air Knife Assembly Wide

TA-T1-10001-S18

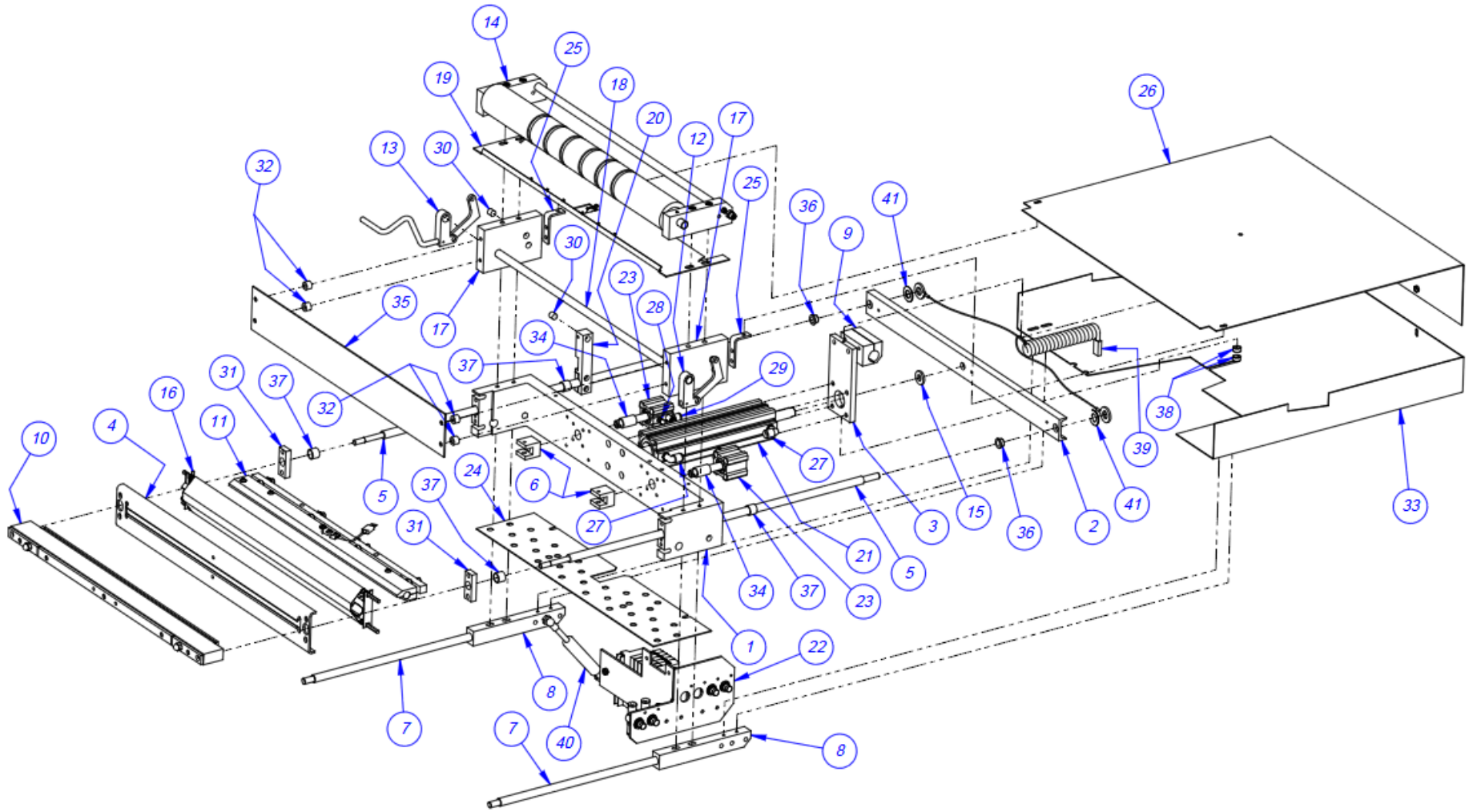
ITEM NO.	QTY.	PART NO.	DESCRIPTION
1	1	TP-BP1013S18	AIR KNIFE MOUNT BAR
2	1	TP-BP-1015-S14	AIR NOZZLE
3	2	TP-T1MC00125S18	SENSOR MOUNTING BLOCKS
4	1	TP-T1MC00083	SENSOR INSULATOR
5	1	TA-T100124-1	HIGH VOLTAGE SENSOR
6	1	TP-405269	AIR KNIFE 12" VENTURI
7	1	TP-401277	ELBOW 1/4" TUBE X #10-32
8	1	TP-401292	STRAIGHT CONNECTOR, 1/4" TUBE X 1/4 NPT
9	1	TP-T1MC00020-S18	FINGER PLATE
10	7	TP-101092	1/4-20 NUT WITH TOOTH LW



Sealer Frame Assembly

TA-T1-10280-S18NB

ITEM NO.	QTY.	PART NO.	DESCRIPTION
1	1	TP-T1-00200S18	SEALER FRAME
2	1	TP-T1MB00010-W18	SEALER ROD TIE BAR
3	1	TP-T1MB00016S18	SEAL CYLINDER MOUNTING BLOCK
4	1	TP-T1MB00005-W18	FRONT GRIPPER PLATE
5	2	TP-T1MB00033-W18-2	SEAL GUIDE ROD
6	2	TP-T1MB00057	HEATER BAR YOKE
7	2	TP-T1MB00144-3	SHIELD MOUNTING ROD
8	2	TP-T1MB00022	GUARD ROD MOUNTING BLOCK
9	1	TP-T1MB00164	PIVOT CLAMP
10	1	TA-T10005-W18	PRESSURE BAR SUB ASSEMBLY
11	1	TA-T10006-W18	HEATER BAR SUB-ASSEMBLY
12	1	TA-T10019	NO HANDLE LATCH ASSEMBLY
13	1	TA-T10019LH	LEFT HAND LATCH ASSEMBLY
14	1	TA-T10012-W18	GROOVED ROLLER MOUNT ASSY.
15	1	TP-102109	HEAT TREATED WASHER
16	1	TA-T10009-W18	PTFE GUIDE SUB-ASSEMBLY
17	2	TP- T1MO00023-W18	DROP FRAME SPACER
18	1	TP-T1MB00063-W18	LATCH SHAFT
19	1	TA-T10017	BAG FINGER GROUNDING ASSEMBLY
20	1	TP-T1MB00107-S18	MAGNETIC SENSOR BLOCK
21	1	TP-403242	MAIN CYLINDER
22	1	TA-T10020-S14	MANIFOLD ASSEMBLY
23	2	TP-403245	AIR CYLINDER
24	1	TP-T1MD00277NB-S18	SHORT INTERNAL GUARD
25	2	TP-T1MD00276NB-S18-4	GUARD BRACKET
26	1	TP- T1MD00276NB-S18-2	NBO INTERNAL GUARD
27	2	TP-401257	ELBOW, 1/4" TUBE X 1/8 NPT
28	2	TP-401277	ELBOW 1/4" TUBE X #10-32
29	2	TP-402186	FLOW CONTROL, #10-32
30	2	TP-211374	MAGNET, ROUND
31	2	TP-T1MB00027-1	GRIPPER SPACER (W)
32	4	TP-104210	SPACER, 3/8LG,1/2 DIA.,.252 HOLE
33	1	TP-T1MD00275NB-S18-2	BOTTOM INTERNAL GUARD
34	2	TP-107127-1	BRONZE BUSHING
35	1	TP-T1MBO0129-W18	DROP FRAME FACE PLATE (WIDE)
36	2	TP-107228	BUSHING, NYLON FLANGE
37	4	TP-107160-1	PTFE COATED BUSHING
38	2	TP-104124	SPACER
39	1	TP-T1ME00209	SEAL BAR COIL CABLE
40	1	TP-403508	GAS SPRING
41	2	TP-107227	BUSHING, THRUST NYLON



**NOTE: If you purchased the T-1000-S18 with a Standard Frame instead of a Drop Frame, your part numbers for the Standard Sealer Frame Assembly are the same as those listed above with the exception of Item 32 TP-104210 Spacer, Item 35 TP-T1MO00129-W18 Drop Frame Face Plate and Item 17 TP-T1MB00023-W18 Drop Frame Spacer. Those three parts are not included in the Standard Frame Sealer Frame Assembly.*

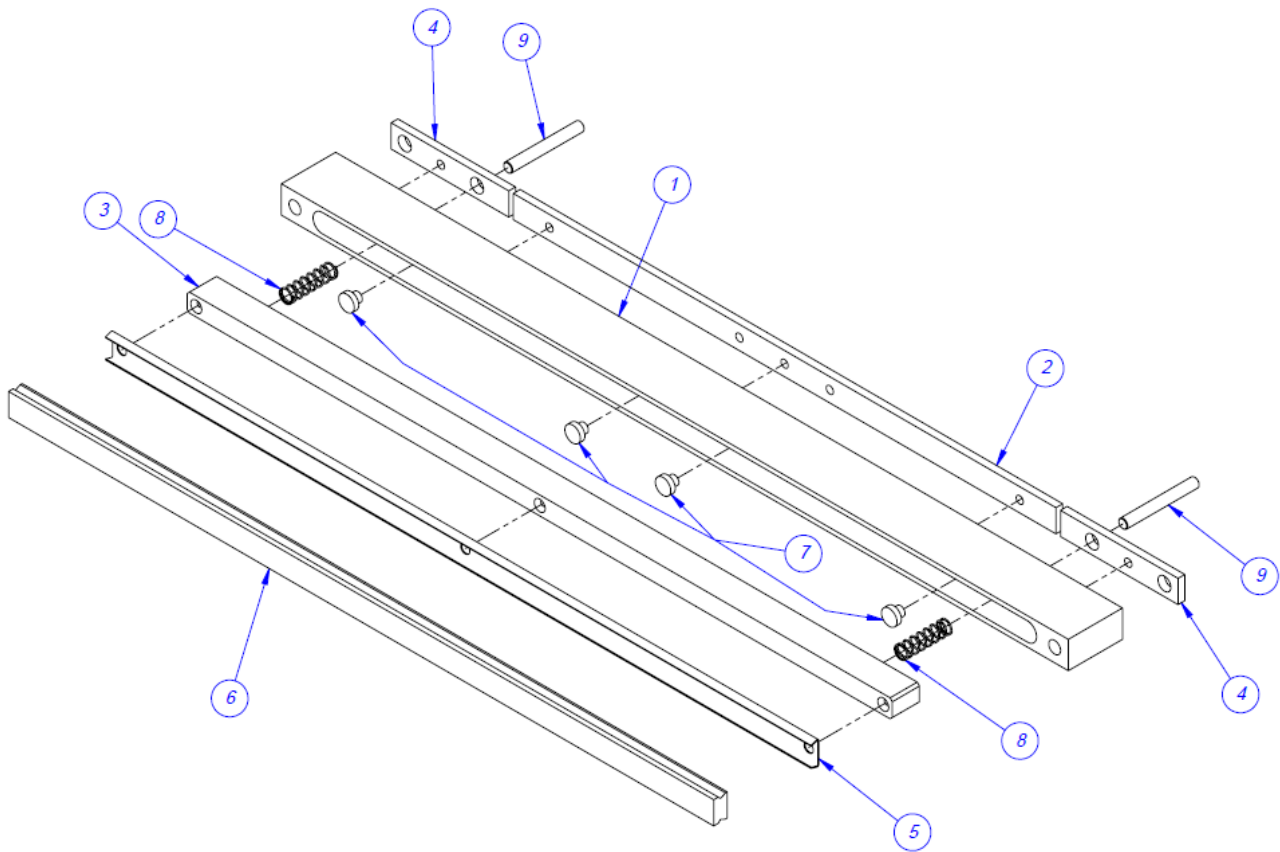
**NOTE: Items 25 and 33 shown above are used in baggers with a 6.25" bag pass through. For baggers with a 7.25" bag pass through, Item 25 will be TP-T1MD000276-S18NB-3 and Item 33 will be TP-T1MD000275-S18NB-3.*

Pressure Bar Assembly

TA-T1-10005-W18

ITEM NO.	QTY.	PART NO.	DESCRIPTION
1	1	TP-T1MB00029-W18	PRESSURE BAR HOUSING
2	1	TP-T1MB00030-W18	SAFETY CONTACT STRIP
3	1	TP-T1MB00031-W18	ANTI-JAM PRESSURE PAD
4	2	TP-T1MB00068	SAFETY CONTACT STRIP
5	1	TP-T1MB00111-W18	RUBBER STRIP HOLDER
6	1	TP-306002-W18	RUBBER SEAL
7	4	TP-300001	RUBBER BUMPER, .43 DIA., 7/32 HOLE
8	2	TP-108155	COMPRESSION SPRING, PRESSURE
9	2	TP-106091	1/4-20 X 2" STUD

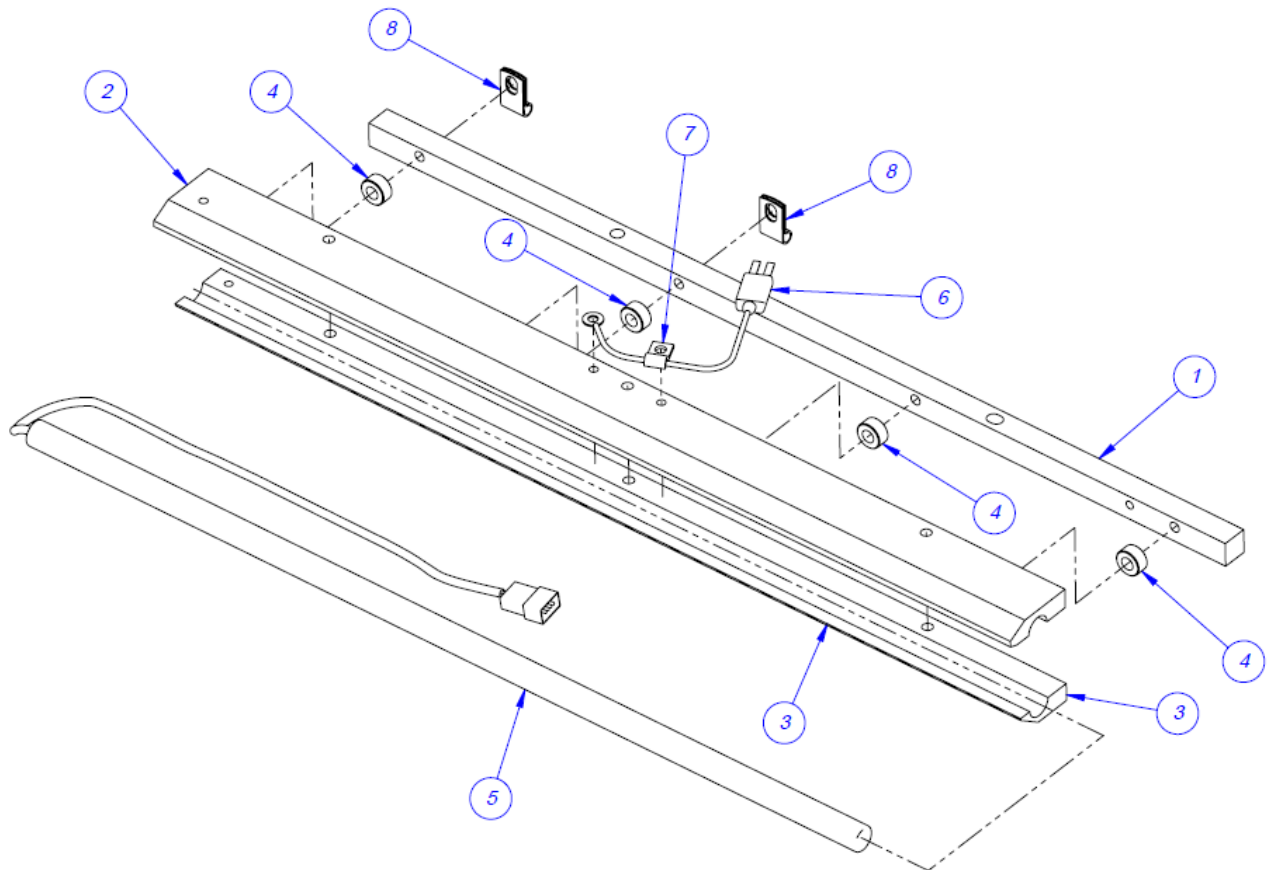
NOTE: On Item No. 6, TP-306002, a strip of PTFE tape needs to be replaced whenever the PTFE on the heater bar is worn out. The width of the PTFE tape must imitate the heater bar width. TP-5205 for 1/4", TP-5210 for 3/8".



Heater Bar Assembly

TA-T1-10006-W18

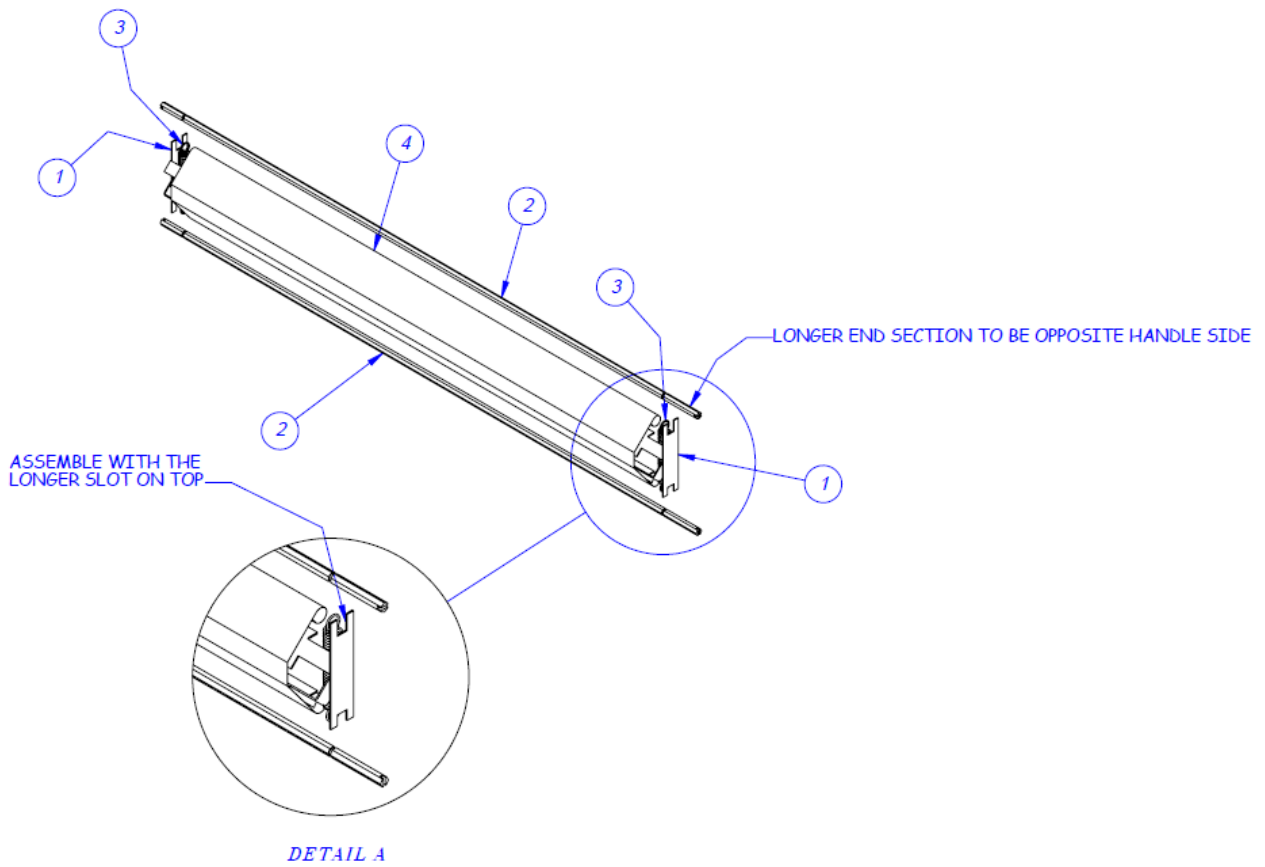
ITEM NO.	QTY.	PART NO.	DESCRIPTION
1	1	TP-T1MB00008-W18	HEATER BAR MOUNTING PLATE
2	1	TP-T1MB00007-W18	HEATER BAR
3	1	TP-T1MB00006-W18	HEATER BAR CLAMP
4	4	TP-104124	SPACER
5	1	TP-217116	CARTRIDGE, HEATER
6	1	TP-221416	THERMOCOUPLE WIRE
7	1	TP-T1MB00145	WIRE TIE DOWN
8	2	TP-109096	WIRE CLAMP



PTFE Guide Assembly

TA-T1-10009-W18

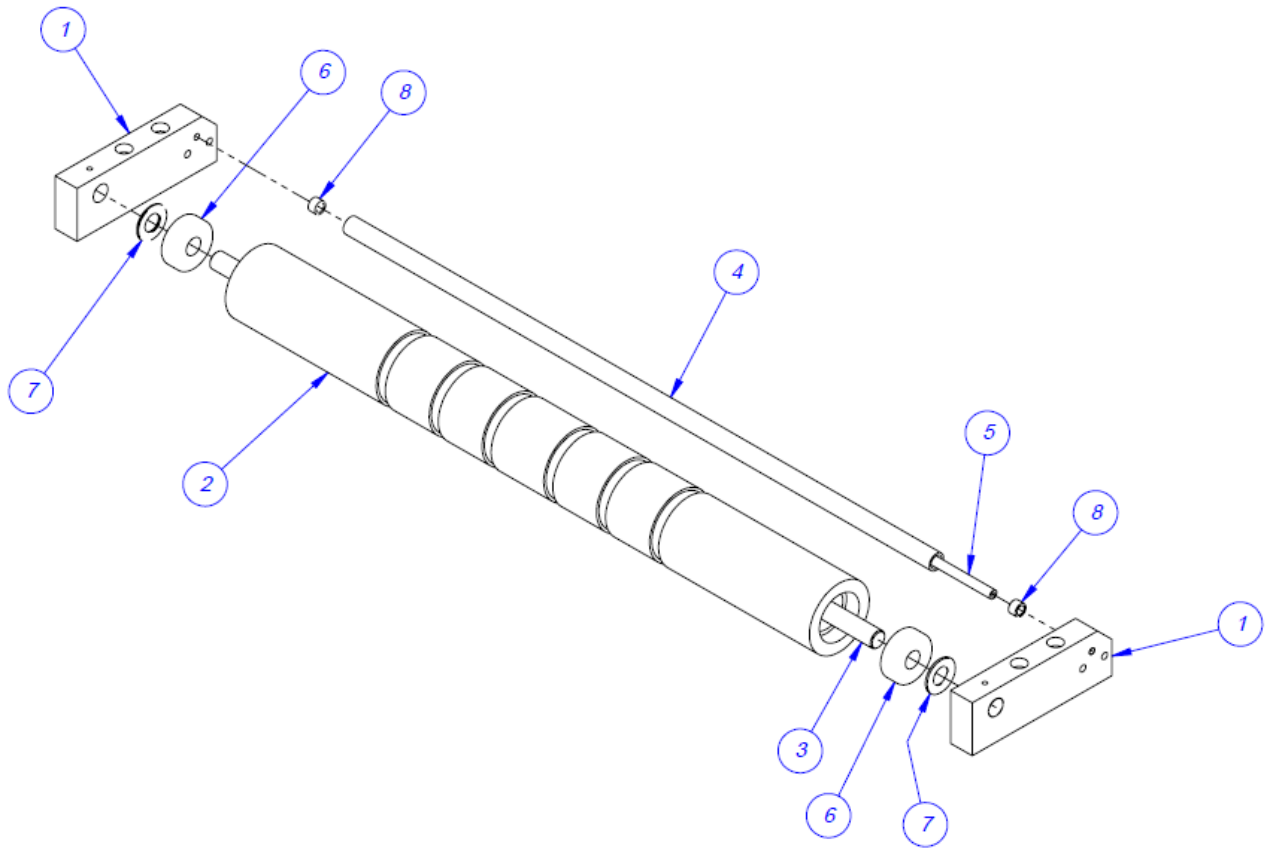
ITEM NO.	QTY.	PART NO.	DESCRIPTION
1	1	TP-T1MB00034-W18	PTFE FINGER
2	2	TP-T1MB00040-W18	PTFE HEX ROD
3	2	TP-108089	EXTENSION SPRING
4	1	TP-300500-W18	PTFE SHEET



Grooved Roller Assembly

TA-T1-10012-W18

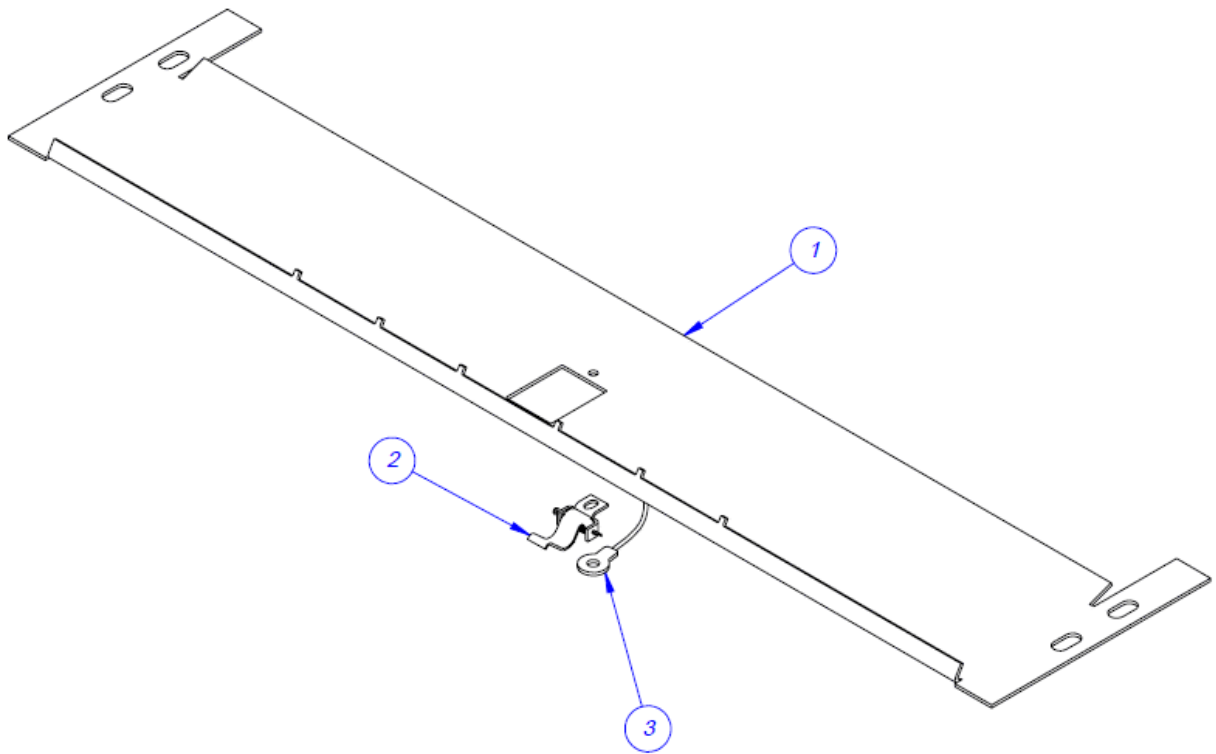
ITEM NO.	QTY.	PART NO.	DESCRIPTION
1	2	TP-T1MB00004-W18	ROLLER MOUNTING BLOCK
2	1	TP-T1MB00012-W18	ROLLER, GROOVED METAL
3	1	TP-T1MB00013-W18	ALUMINUM ROLLER SHAFT
4	1	TP-T1MB00155-W18	FILM WEB TENSION ROLLER
5	1	TP-T1MB00156-W18	FILM WEB ROLLER SHAFT
6	2	TP-504111	BEARING, NICE 1/2 I.D.
7	2	TP-107227	BUSHING, THRUST NYLON
8	2	TP-107163	BUSHING 1/4 ID X 3/8 X 0.250



Bag Finger Ground Assembly

TA-T1-10017-W18

ITEM NO.	QTY.	PART NO.	DESCRIPTION
1	1	TP-T1MB00028-W18	GROOVED METAL ROLLER FINGER
2	1	TA-T1-00124-1	HIGH VOLTAGE SENSOR
3	1	TP-T1ME00325-1	GROUNDING SENSOR WIRE

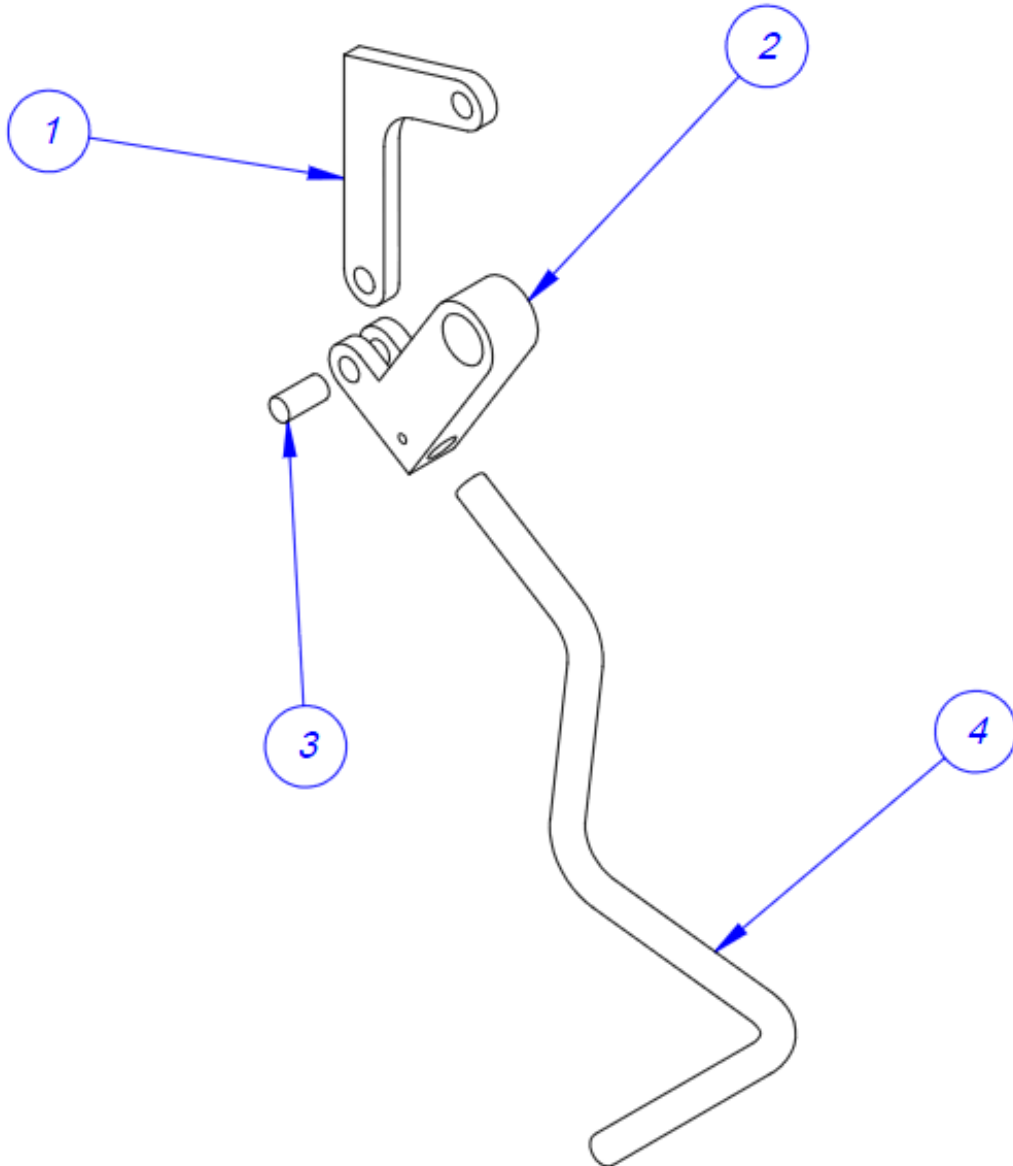


Latch Sub Assembly

TA-T1-10019

ITEM NO.	QTY.	PART NO.	DESCRIPTION
1	1	TP-T1MB00060	LATCH LOCK
2	1	TP-T1MB00061	LATCH CAM
3	1	TP-106135	DOWELL PIN
4	1	TP-T1MB00062	L. H. LATCH HANDLE

NOTE: Right hand latches are also available.

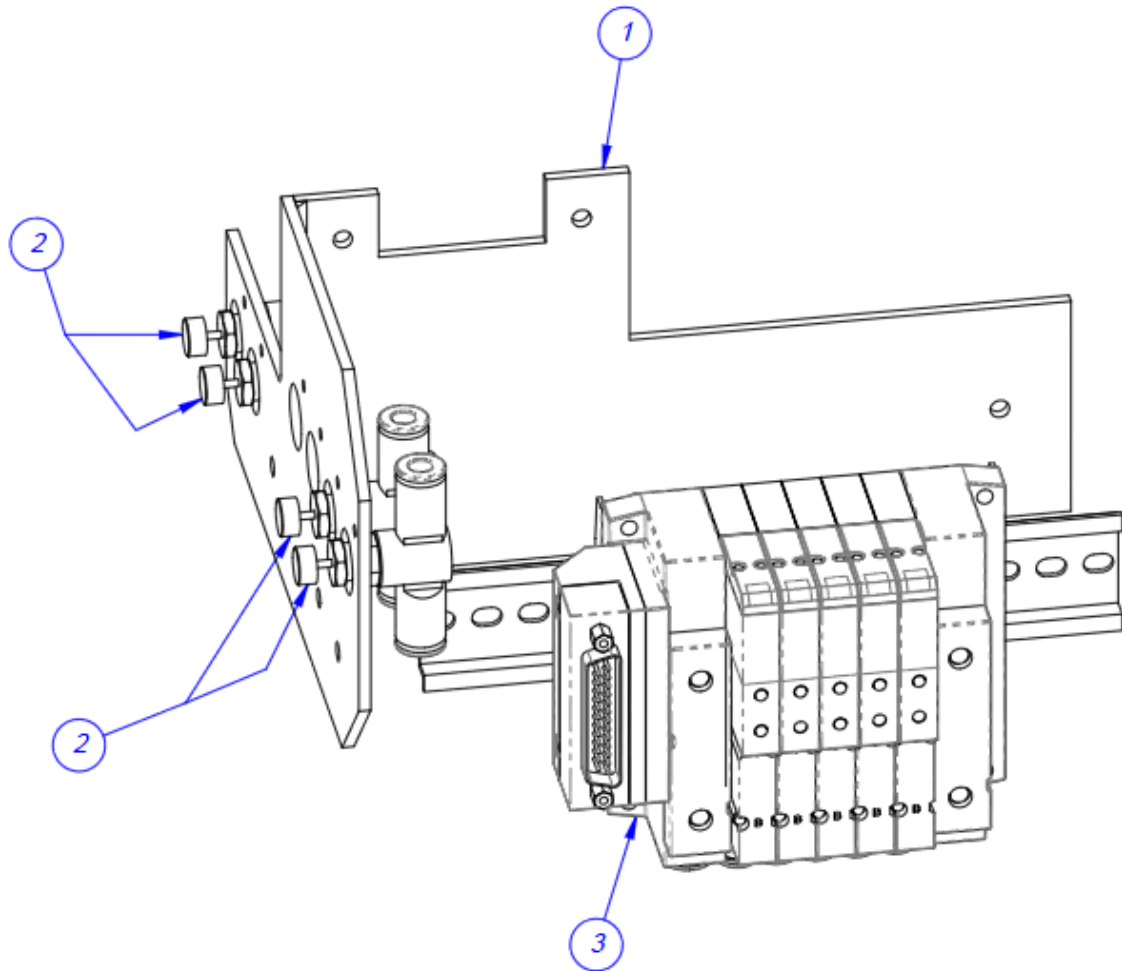


Manifold Assembly

TA-T1-10020-S14

ITEM NO.	QTY.	PART NO.	DESCRIPTION
1	1	TP-T1MC00015S14	MANIFOLD BRACKET
2	4	TP-402104	IN LINE FLOW CONTROL
3	1	TA-T1-10025-S14	PNEUMATIC VALVE ASSEMBLY

NOTE: Valves with one button (Single Valves) are part # TP-402266. Valves with two buttons (Dual Valves) are part # TP-402267.



Electrical Panel T-1000-S14 & -S18

TA-T1-10270-S14

ITEM NO.	QTY.	PART NO.	DESCRIPTION
1	1	TP-T1MC00006-S14	ELECTRONICS MOUNTING PANEL
2	1	TP-205108	EMI FILTER, CORCOM
3	1	TP-207216, TP-207344	FUSE HOLDER & FUSE
4	1	TP-212167	6-PIN CIRCULAR FEMALE
5	2	TP-212247	9-PIN D-SUB FEMALE
6	1	TP-212410	AC OUTLET
7	1	TP-213361	24VDC, 3AMP POWER SUPPLY
8	1	TP-215000A	COVER
9	1	TP-215000	SOLID STATE RELAY
10	1	TP-211386	HIGH VOLTAGE TRANSFORMER
11	1	TP-T1ME00301	HIGH VOLTAGE BOARD
12	1	TP-501175-1	MOTOR DRIVE
13	1	TP-215384	POWER SWITCH
14	2	TP-214279	STAND-OFF 1"
15	18	TP-208142	LARGE TERMINAL BLOCK
16	1	TP-218021	DIN RAIL
17	4	TP-214268	STAND-OFF .38"
18	1	TP-215005	SWITCH
19	1	TP-T1MC00021	TRANSFORMER MOUNTING PLATE
20	1	TP-212160	5-POS MINI DIP
21	1	TP-T1MC00002S14	ANGLE MOUNT (5) PHASE DRIVER
22	1	TP-T1MC00016S14	ELECTRONICS MOUNTING BRACKET
23	1	TP-212248	25-PIN D-SUB FEMALE
24	1	TP-218020	DIN RAIL
25	1	TP-220511, 214111, 220513	PLC, BATTERY, & COM2 CASSETTE
26	1	TP-220514	PLC, FPO-E32T-A EXPANSION I/O
27	1	TP-T1MO00228	EURO DISCONNECT SWITCH MTG. PLATE
28	2	TP-T1MO00229	STANDOFF
29	1	TP-215530	SOLID STATE RELAY
30	1	TP-212166	6-PIN MALE
31	1	TP-212338	10-PIN FEMALE
32	1	TP-220508	PLC ANALOG MODULE
33	1	TP-TP-212242	3-PIN SOCKET W/ANGLE BRACKET
34	1	TP-215004	SWITCH KNOB
35	1	TP-215115 & 215116	AUX RELAY & SOCKET
36	1	TP-112240	POWER CORD STRAIN RELIEF
37	1	TP-215400	ETHERNET COUPLER

