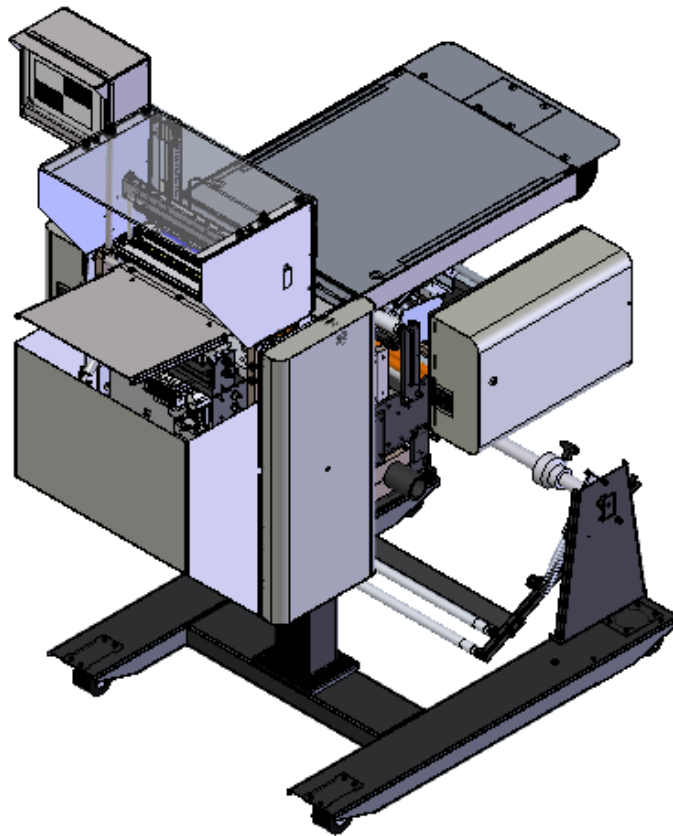


T-1000-S14H

Advanced Poly-Bagger™ Horizontal Addendum

(Model T-1000-S14H)

Version 9 Revision G



 Advanced
Poly-Packaging, Inc.

1331 Emmitt Road • Akron, OH 44306 • 1-800-754-4403 • fax 330-785-4010 • www.advancedpoly.com

Acknowledgments

Written By: David Kolinski-Schultz

Reviewed By: Stuart Baker

Copyright

2019 (Ver. 9G) 2018 (Ver. 9F) 2018 (Ver. 9E) 2015 (Ver. 9) 2014 (Ver. 8), 2010 (Ver. 7) 2009 (Ver. 6), 2007 (Ver. 5), 2006 (Ver. 4), 2003 (Ver. 3), 2001 (Ver. 2), 1995 (Ver. 1), Advanced Poly-Packaging, Inc. (APPI). All rights reserved.

This manual and the program operating the equipment described in it are copyrighted. You may not copy this manual in whole or part without the consent of Advanced Poly-Packaging, Inc.

All information pertaining to the promotion, sale, distribution, operation and maintenance of the T-1000-S14 ADVANCED POLY-BAGGER including this manual, drawings, schematic, wiring diagrams, VHF video tapes, brochures, specification sheets, figures, charts, or any other information, due to its proprietary design and manufacture remain the property of Advanced Poly Packaging, Inc. Unauthorized duplication, distribution or disclosure to third parties without the express permission of Advanced Poly-Packaging, Inc. is strictly prohibited.

Trademarks

T-1000-S18 is a trademark of Advanced Poly-Packaging, Inc. Advanced Poly-Packaging, Inc. owns also the following trademarks: Advanced Poly-Bags, Advanced Poly-Bagger, Seal-a-Print, Roll-a-Print, Twin-Seal, Advanced Poly-Pack, Advanced Poly-Bag, and Advanced Bag.

Limited Warranty and Disclaimer

Warranty period is 12 months or 1,000,000 cycles whichever comes first. The warranty commences on the date of delivery of the equipment to the Purchaser. APPI warrants to the Purchaser that the equipment is free from defects in workmanship or material under normal use and service. During the warranty period, APPI agrees to repair or replace, at its sole option, without charge to Purchaser, any defective component part of the equipment. To obtain service, Purchaser must return the equipment or component to APPI or an authorized APPI distributor or service representative in an adequate container for shipping. Any shipping charges, insurance, or other fees must be paid by Purchaser and all risk for the equipment shall remain with Purchaser until such time as APPI takes receipt of the equipment. Upon receipt, APPI, the authorized distributor or service representative will promptly repair or replace the defective component and then return the equipment or component to Purchaser, shipping charges, insurance, and additional fees prepaid. APPI may use reconditioned or like new parts or units, at its sole option, when repairing any component or equipment. Repaired products shall carry the same amount of outstanding warranty as from original purchase. Any claim under the warranty must include a dated proof of delivery. In any event, APPI's liability for defective components or equipment is limited to repairing or replacing the components. This warranty is contingent upon proper use of the equipment by Purchaser and does not cover: expendable component part such thermocouple wire, heater cartridge, rollers, bushings, and the like; or if damage is due to accident, unusual physical, electrical or electromechanical stress, neglect, misuse, failure of electric power, water damage (from airlines), improper environmental conditions, transportation, tampering with or altering of the equipment, packaging of corrosive or contaminating products or other products damaging to components, and equipment or components not owned or in the possession of original Purchaser. APPI will not be liable for loss of production, profits, lost savings, special, incidental, consequential, indirect, or other similar damages arising from breach of warranty, breach of contract, negligence, or their legal action even if APPI or its agent has been advised of the possibility of such damages or for any claim brought against the Purchaser by another party. This warranty allocates risks of equipment failure between Purchaser and APPI. APPI's pricing reflects this allocation of risk and the limitations of liability contained in this warranty. The warranty set forth above is in lieu of all other express warranties, whether oral or written. The agents, employees, distributors, and dealers of APPI are not authorized to make modifications to this warranty, or additional warranties binding on APPI. Accordingly, additional statements such as dealer advertising or presentations, whether oral or written, do not constitute warranties by APPI and should not be relied upon. Warranty on equipment is considered void when outstanding balances become delinquent (over 30 days late - 60 days after ship date). Equipment Integration to other Equipment: APPI assumes no responsibility for the integration of its products to other products or within a system unless APPI performs the integration, testing and provides the results of the tests to the purchaser in writing. Furthermore, APPI assumes no responsibility for bag sizing whether suggested or recommended.

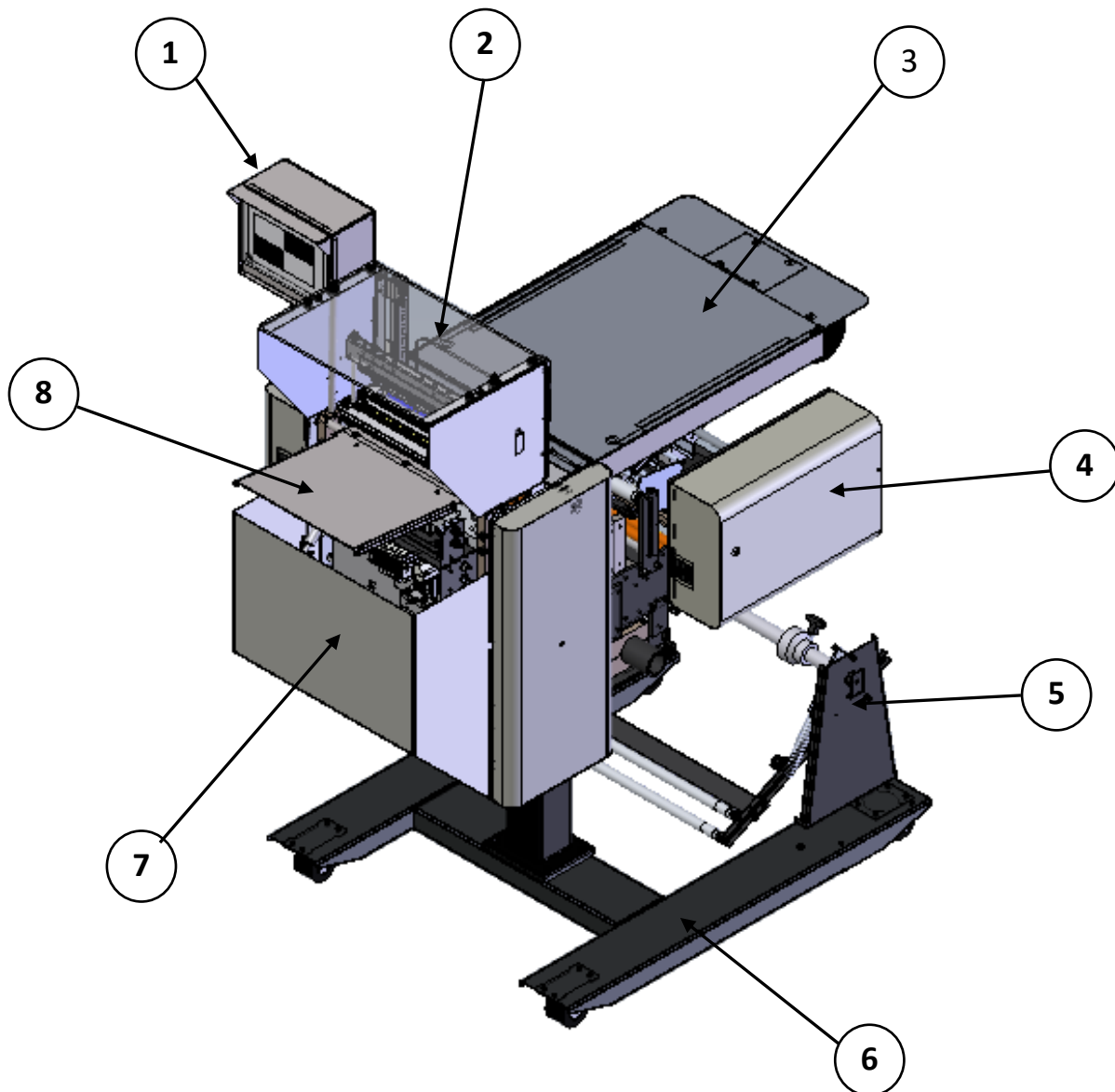
Contents

Horizontal Bagger Main Components	3
Wide Work Table.....	4
Electronics Panel.....	6
Ti-1000Z Electronic Panel Assembly	8
Horizontal Base Assembly.....	10
Upper Column Assembly, Horizontal.....	11
Horizontal Dancer Assembly	12
T-1000-S18 Horizontal Dancer Assembly (Wide)	13

Horizontal Bagger Main Components

T-T1000-S14H

ITEM NO.	QTY.	Part No	DESCRIPTION
1	1	TP-220380	TOUCH SCREEN
2	1	TP-T1MD00116	LEXAN GUARD
3	1	TO-T1-PT50	WORK TABLE
4	1	T-TI1000Z	INLINE PRINTER ELECTRONICS
5	1	TA-T1-10220H	DANCER ASSEMBLY
6	1	TA-T1-10200H	HORIZONTAL BASE ASSEMBLY
7	1	TP-HB0014	FRONT COVER
8	1	TP-LS00101	BACK PLATE



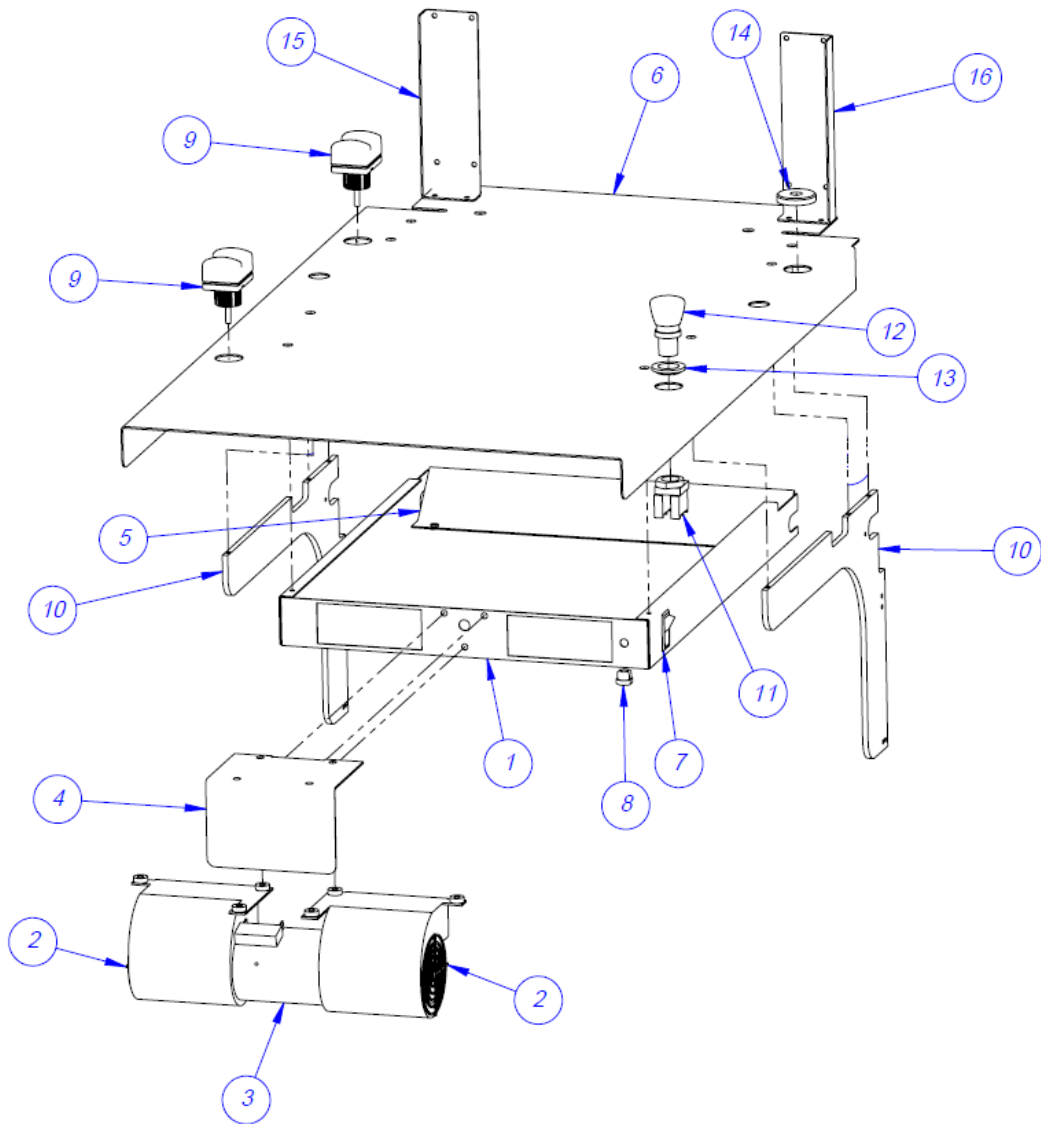
Wide Work Table

TO-TIPT50

ITEM NO.	QTY.	PART NO	DESCRIPTION
1	1	TP-HB0001-S14	BLOWER VENT
2	2	TP-HB0024	BLOWER END GUARD
3	1	TP-506000	LOW PROFILE BLOWER
4	1	TP-HB0008	FAN MOUNT
5	1	TP-PT50-001-S14	AIR DIVERTER
6	1	TP-PT50-002	WORK SURFACE
7	1	TP-215384	SWITCH, ROCKER SPST 205 @ 10A
8	1	TP-112240	STRAIN RELIEF, 5/8 HOLE
9	2	TP-216117-1	OPTICAL TOUCH BUTTONS: OTB & LTB SERIES
10	2	TP-PT50-003-18	WORK SURFACE SUPPORT
11	1	TP-215017	E-STOP SWITCH
12	1	TP-215016	E-STOP BUTTON
13	1	TP-PT50-005	E-STOP MOUNT
14	1	TP-PT50-004	TOUCH SCREEN SPACER
15	1	TP-PT50-006	LIGHT CURTAIN MOUNT (RIGHT)
16	1	TP-PT50-007	LIGHT CURTAIN MOUNT (LEFT)

Wide Work Table

TO-TIPT50



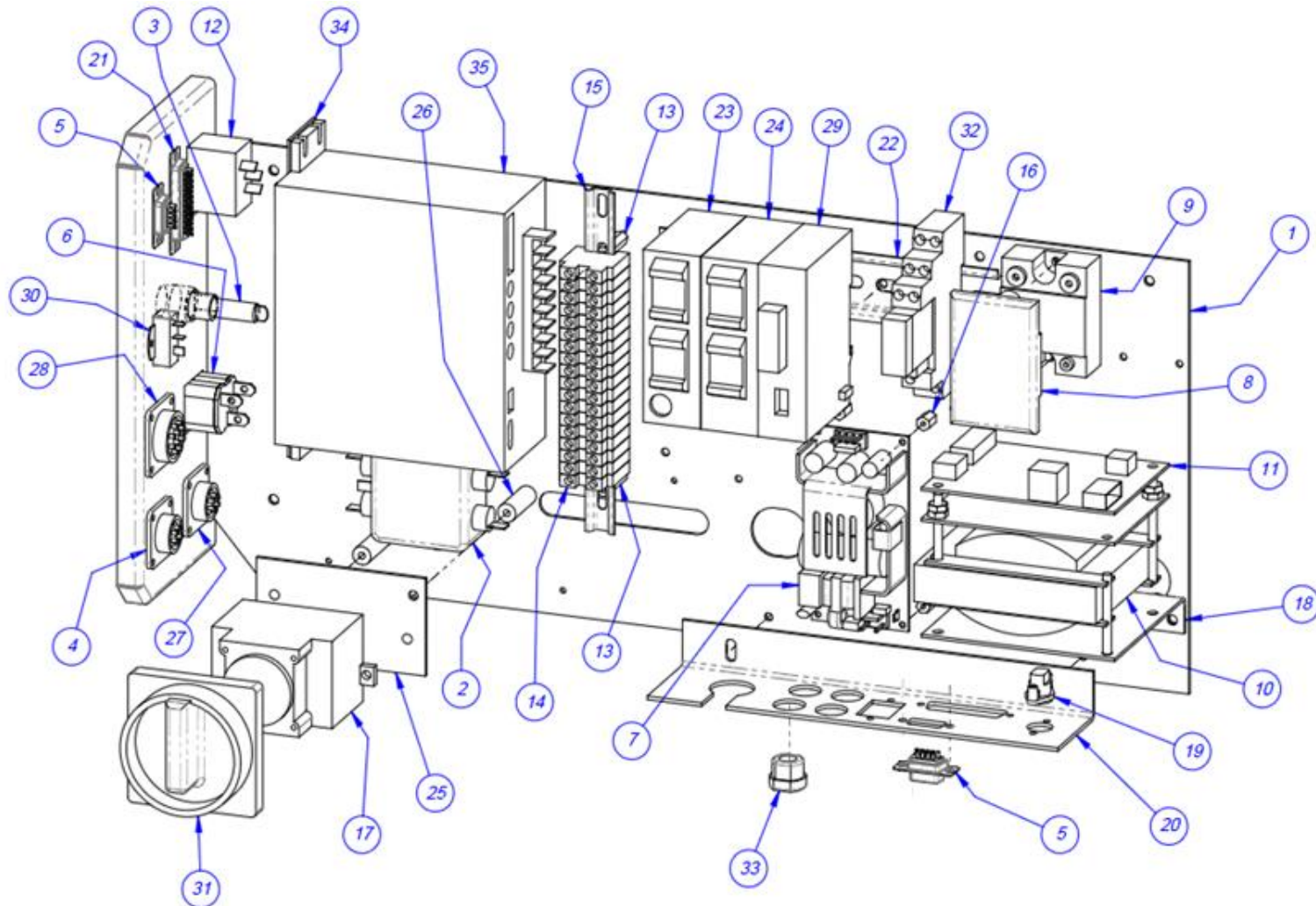
Electronics Panel

TA-TI-10270-S14C

ITEM NO.	QTY.	PART NO.	DESCRIPTION
1	1	TP-T1MC00006-S14	ELECTRONICS MOUNTING PANEL
2	1	TP-205108	EMI FILTER, CORCOM
3	1	TP-207216, TP-207344	FUSE HOLDER & FUZE
4	1	TP-212167	6-PIN CIRCULAR FEMALE
5	2	TP-212247	9-PIN D-SUB FEMALE
6	1	TP-212410	AC OUTLET
7	1	TP-213361	24VDC, 3AMP POWER SUPPLY
8	1	TP-215000A	COVER
9	1	TP-215000	SOLID STATE RELAY
10	1	TP-211386	HIGH VOLTAGE TRANSFORMER
11	1	TP-T1ME00301	HIGH VOLTAGE BOARD
12	1	TP-215384	POWER SWITCH
13	2	TP-214279	STAND-OFF 1"
14	18	TP- 208142	LARGE TERMINAL BLOCK
15	1	TP-218021	DIN RAIL
16	4	TP-214268	STAND-OFF .38"
17	1	TP-215005	SWITCH
18	1	TP-T1MC00021	TRANS MOUNTING PLATE
19	1	TP-212160	5-POS MINI DIN
20	1	TP-T1MC00016S14	ELECTRONICS MOUNTING BRACKET
21	1	TP-212248	25-PIN D-SUB FEMALE
22	1	TP-218020	DIN RAIL
23	1	TP-220511, TP-214111, TP-220513	PLC, BATTERY & COMM 2 CAS
24	1	TP-220514	PLC, FPO-E32T-A EXPANSION I/O
25	1	TP-T1MO00228	T-1000 EURO DISCONNECT SWITCH
26	2	TP-T1MO00229	STANDOFF
27	1	TP-212166	6-PIN MALE
28	1	TP-212338	10-PIN FEMALE
29	1	TP-220508	PLC ANALOG MODULE
30	1	TP-212242	3-PIN SOCKET W/ANGLE BRACKET
31	1	TP-215004	SWITCH KNOB
32	1	TP-215115 & 215116	AUX RELAY & SOCKET
33	1	TP-112240	POWER CORD STRAIN RELIEF
34	1	TP-T1MC00002S14	ANGLE MOUNT (5) PHASE DRIVER
35	1	TP-501175-2	5-PHASE DRIVER, 220VOLT

Electronics Panel

TA-T1-10270-S14C



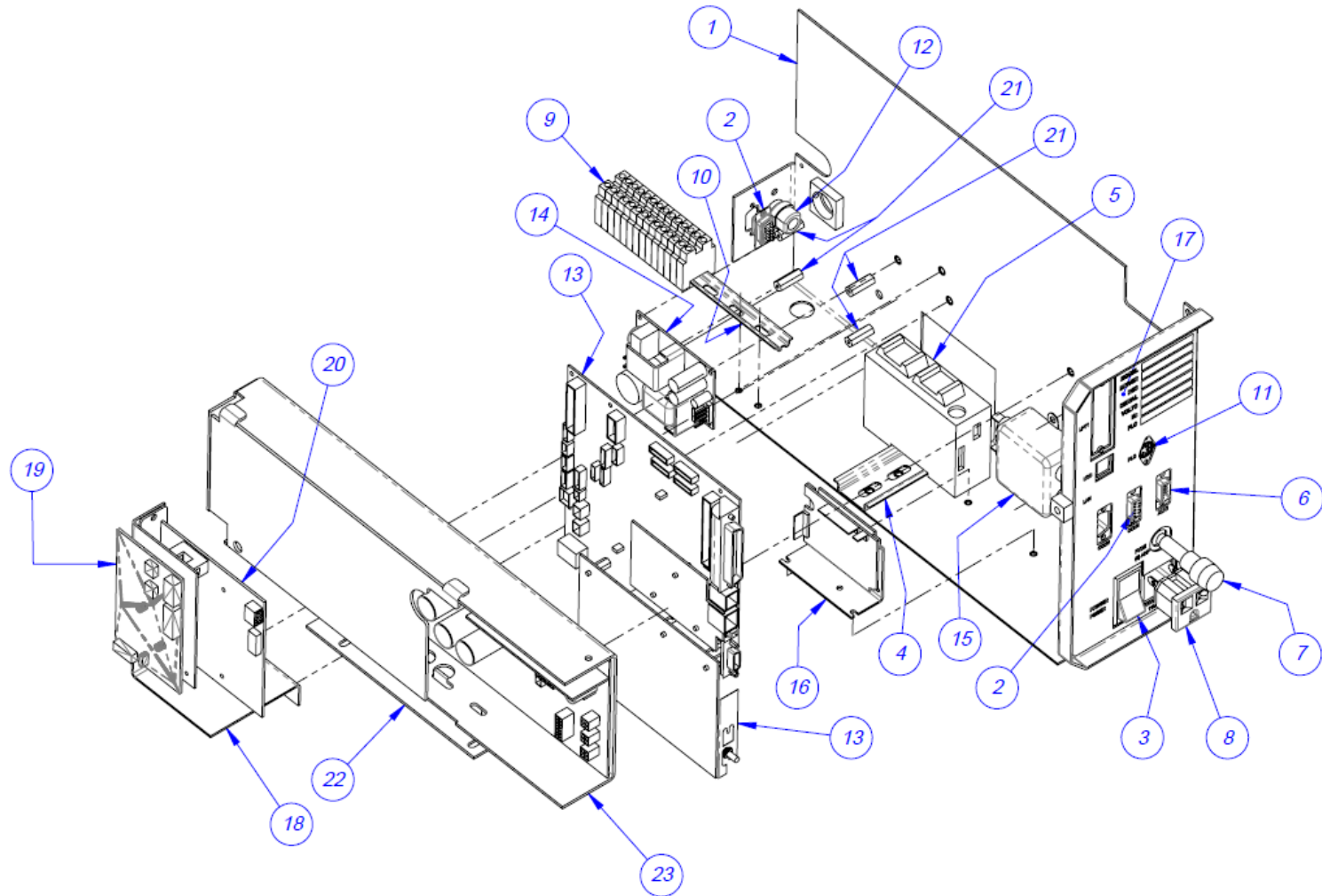
Ti-1000Z Electronic Panel Assembly

TA-T2Z-1000

ITEM NO.	QTY.	PART NO.	DESCRIPTION
1	1	TP-T2Z1005	ELECTRONICS BASE
2	2	TP-212247	9-PIN D-SUB FEMALE
3	1	TP-215384	POWER SWITCH
4	1	TP-218020	DIN RAIL
5	1	TP-220511,214111,220513	PLC, BATTERY & COMM 2 CAS
6	1	TP-212246	CONNECTOR, MULTIPOLE RECTANGULAR
7	1	TP-207216, TP-207344	FUSE HOLDER & FUSE
8	1	TP-212410	AC OUTLET
9	14	TP-208142	LARGE TERMINAL BLOCK
10	1	TP-218021	DIN RAIL
11	1	TP-212160	5-POS MINI DIM
12	1	TP-112240	POWER CORD STRAIN RELIEF
13	1	V-Z-113-8K1-00070	LOGIC BOARD
14	1	TP-213361	24VDC, 3AMP POWER SUPPLY
15	1	TP-205108	EMI FILTER, CORCOM
16	1	TP-501156	DC MOTOR DRIVE, DRIVEN PRINT ROLL
17	1	TP-T2Z1007	OVERLAY
18	1	TP-T2Z1004	APPLICATOR BOARD MOUNT
19	1	VP-Z-P1011156	xi4 24-28V APPLICATOR INTERFACE
20	1	VP-Z-57389M	APPLICATOR INTERFACE ASSEMBLY 24V
21	4	TP-214273	STAND-OFF, NYLON,
22	1	TP-T2Z1018	POWER SUPPLY MOUNT
23	1	VP-Z-1058301	ZEBRA POWER SUPPLY

Ti-1000Z Electronic Panel Assembly

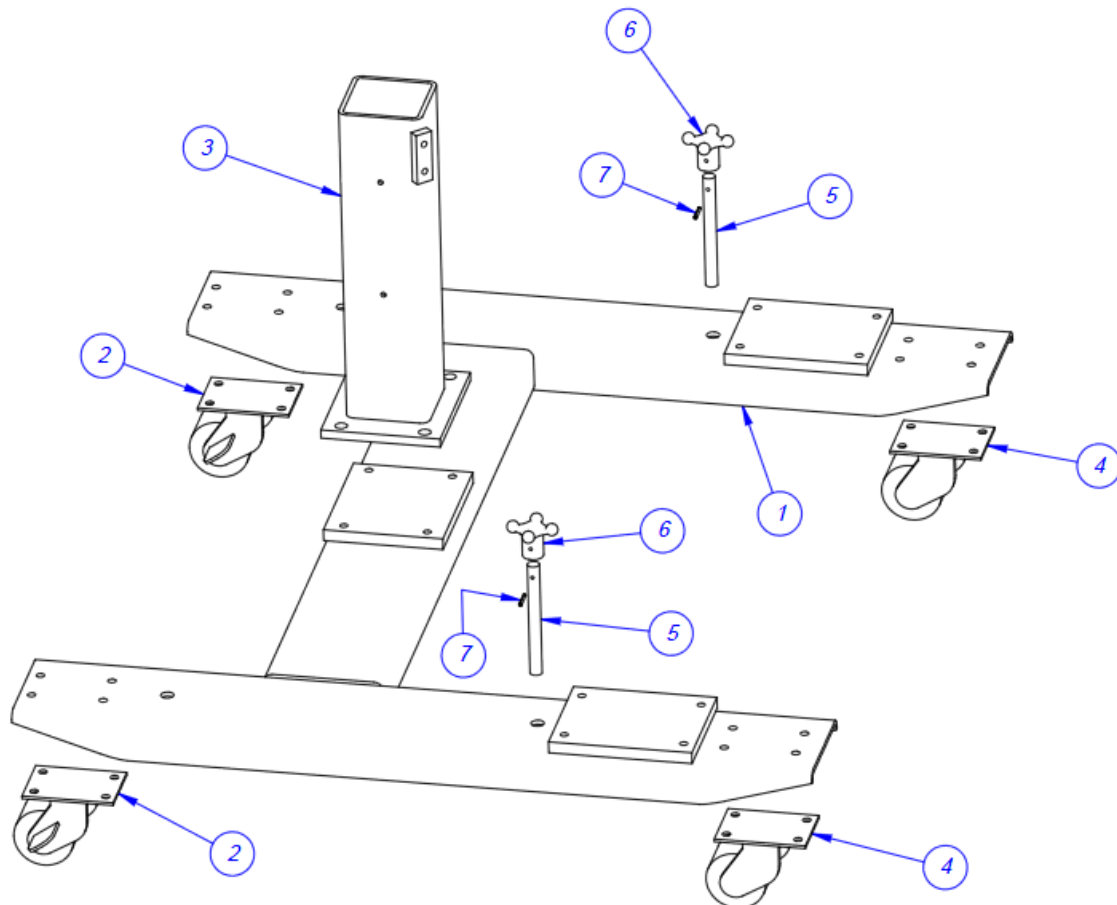
Ti-1000Z



Horizontal Base Assembly

TA-T1-10200H

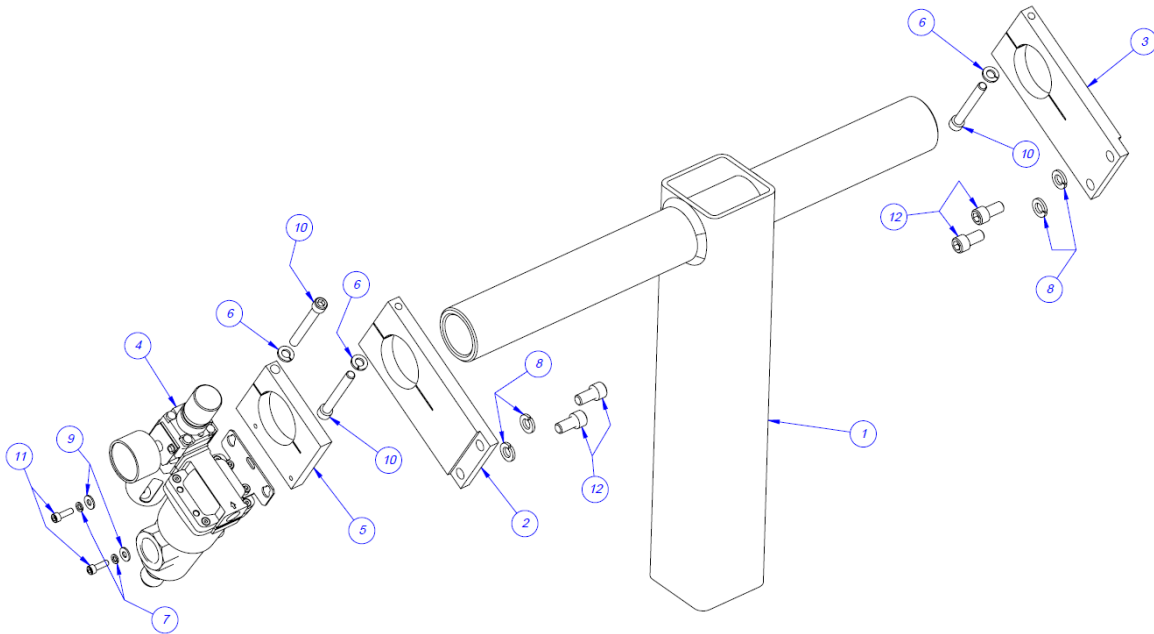
ITEM NO.	QTY.	PART NO	DESCRIPTION
1	1	TP-T1MA00051H	"H" FRAME HORIZONTAL INCLINE
2	2	TP-110755	SWIVEL T-1000 W BRAKE
3	1	TP-T1MA00051-1	LOWER COLUMN
4	2	TP-110756	CASTER, SWIVEL
5	2	TP-106094	STUD, FLOOR LEVELER
6	2	TP-109148	HAND KNOB
7	2	TP-106132	SLOTTED SPRING PIN 1/8 X 7/8 LG



Upper Column Assembly, Horizontal

TA-T1-10210H

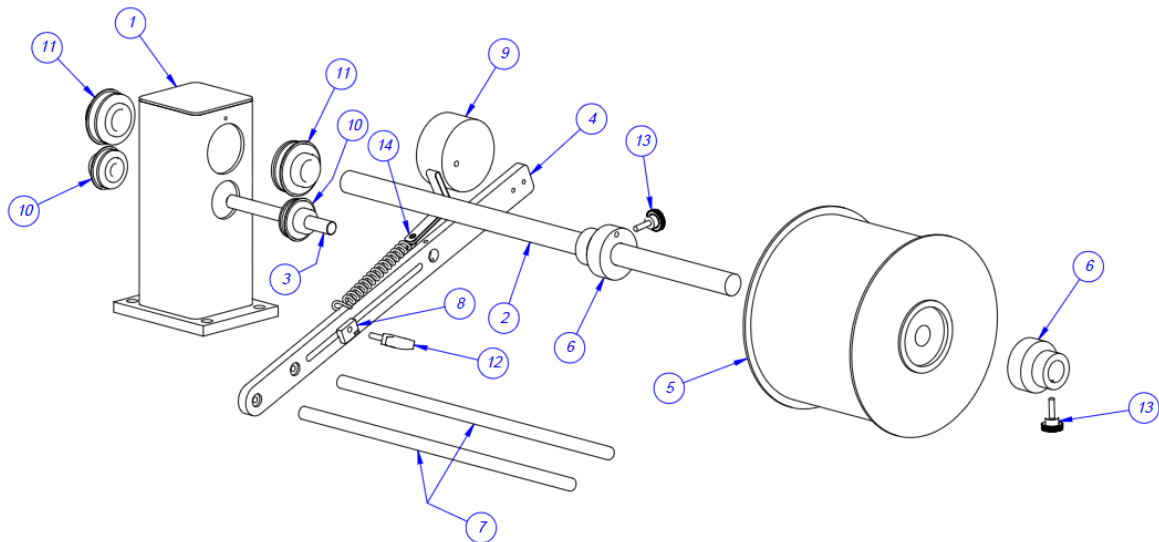
ITEM NO.	QTY.	PART NO	DESCRIPTION
1	1	TP-T1MA00087H	"T" POST MODIFICATION
2	1	TP-BD012-1	BASE CLAMP (L.H.)
3	1	TP-BD012-1	BASE CLAMP (R.H.)
4	1	TP-406260-1	FILTER/DRYER/REGULATOR ASSEMBLY
5	1	TP-HB0046	FR MOUNT
6	3	TP-102156	WASHER, 5/16 LOCK
7	2	TP-102154	WASHER, #10 LOCK
8	4	TP-102157	WASHER, 3/8 LOCK
9	2	TP-102134	WASHER, #10 FLAT
10	3	TP-103012	SCREW, SHCS, 5/16-18 X 2-1/2
11	2	TP-103170	SCREW, SHCS, 10-32 X 5/8 S.S.
12	4	TP-103149	SCREW, SHCS, 3/8-16 X 3/4



Horizontal Dancer Assembly

TA-T1-10220H

ITEM NO.	QTY.	PART NO	DESCRIPTION
1	1	TP- T1MA00036H	DANCER POST
2	1	TP-T1MA00073H	ROLL SHAFT
3	1	TP-T1MA00090H	DANCER SHAFT
4	1	TP-T1MA00072H	DANCER ARM
5	1	VARIES	BAG ROLL
6	2	TP-T1MA00049	FILM TENSION HUB
7	2	TP-T1MA00089H	DANCER ROD
8	1	TP-T1MA00186	TENSION ADJUSTER
9	1	TP- HB0032	COUNTER WEIGHT
10	2	TP-107103	BEARING
11	2	TP-107104	BEARING
12	1	TP-109212-1	"T" KNOB
13	2	TP-109212	KNOB
14	1	TP-T1MA00115	BELT TENSION STRAP & SPRING



T-1000-S18 Horizontal Dancer Assembly (Wide)

TA-T1-10220H-S18

ITEM NO	QTY	PART NO	DESCRIPTION
1	1	TP- T1MA00036H	DANCER POST
2	1	TP-T1MA00072H	DANCER ARM
3	1	TP-T1MA00073H-S18	ROLL SHAFT
4	1	TP-T1MA00090H-S18	DANCER SHAFT
5	2	TP-T1MA00089H-S18	DANCER ROD
6	1	TP- HB0032	COUNTER WEIGHT
7	2	TP-107104	BEARING
8	2	TP-107103	BEARING
9	2	TP-T1MA00049	FILM TENSION HUB
10	1	TP-T1MA00186-2	TENSION ADJUSTER
11	1	TP-T1MA00186-1	TENSION ADJUSTER
12	1	TP-109212-1	"T" KNOB
13	2	TP-109212	KNOB
14	1	TP-T1MA00115	BELT TENSION STRAP & SPRING
15	1	VARIES	BAG ROLL

T-1000-S18 Horizontal Dancer Assembly (Wide)

