

How To

Service Documents from APPI

Document: #HT000159

Document Title: Set Printer Width Via Zebra Setup Utilities

Product(s): Any TIZ Printer

Procedure:

Zebra Setup Utilities

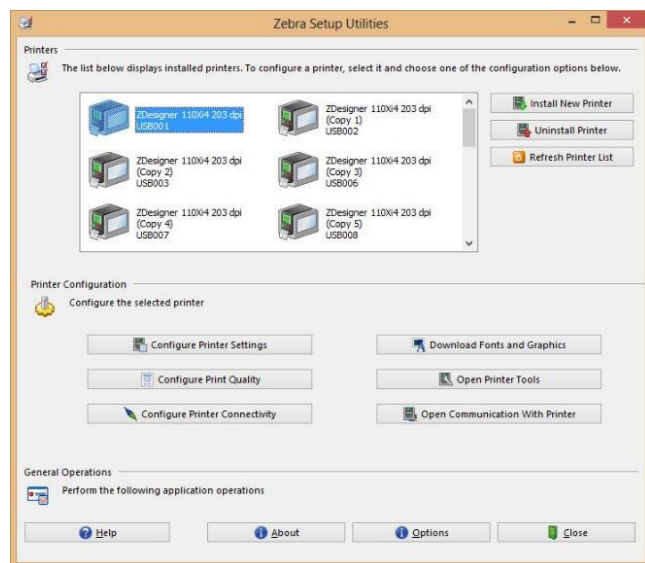
Zebra Setup Utilities (ZSU) is available for download [here](#).

On a computer that is connected to the printer via USB cable (such as a laptop), install the software.

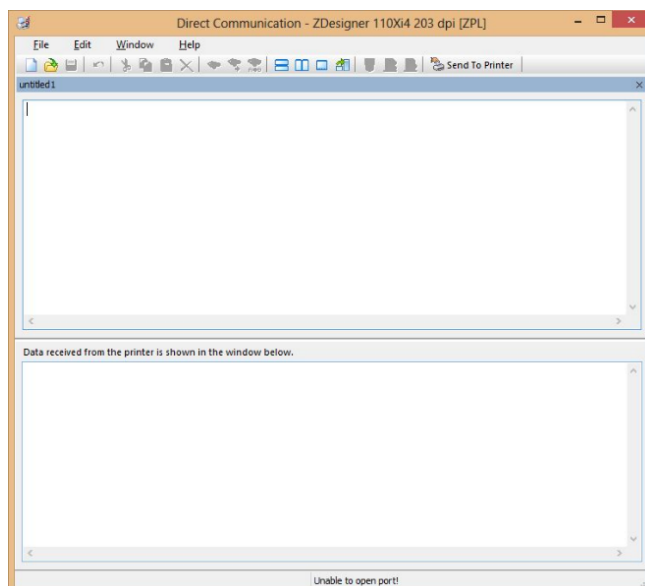
Clear labels from the Bagger.

Open ZSU.

Once set up with ZSU, make sure the printer is highlighted, and click **Open Communication With Printer**



This Window will appear.





How To

Service Documents from APPI

Type in exactly as shown, including the ^.

^XA

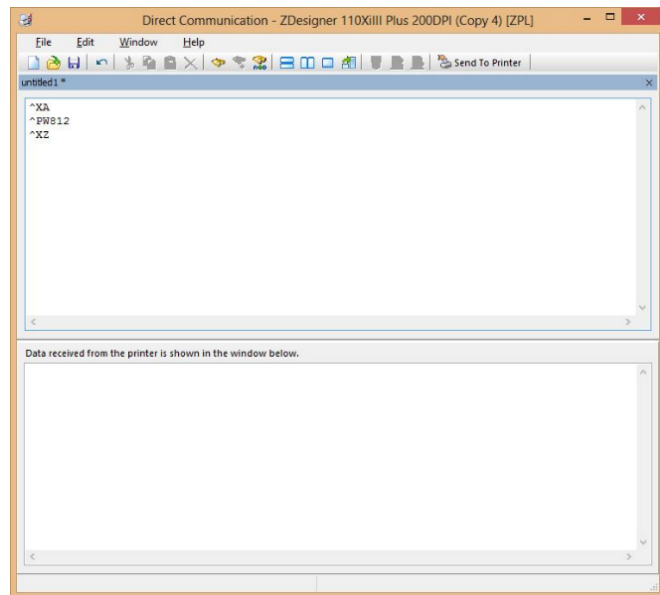
^PW812

^XZ

The example shows how to set print width on a 203 dpi print head.

A 305 dpi print head would be
^PW1220

When ready, click *Send To Printer*.



Exit out of **ZSU**. Load a factory label on the printer, and print. Confirm that it prints the full width.

Send a label that is known to work properly, and print.

Compare label settings between working label and the label that caused problems.

ZDesigner Printer Driver Settings

The following **ZDesigner Dialog Box** can be found in the **Labeling Software** used.

Check the **Help Files** on how to select the correct Print Driver and adjust the settings.

If no **Labeling Software** is be used or no access to the Labeling Software is possible, use the following procedure to access the ZDesigner Dialog Box:

1. In Windows go to **Control Panel** and select **Devices and Printers**.
2. Select the correct **Zebra Designer Printer** and Right-click.
3. Select **Printing Preferences** and Left-Click.

How To

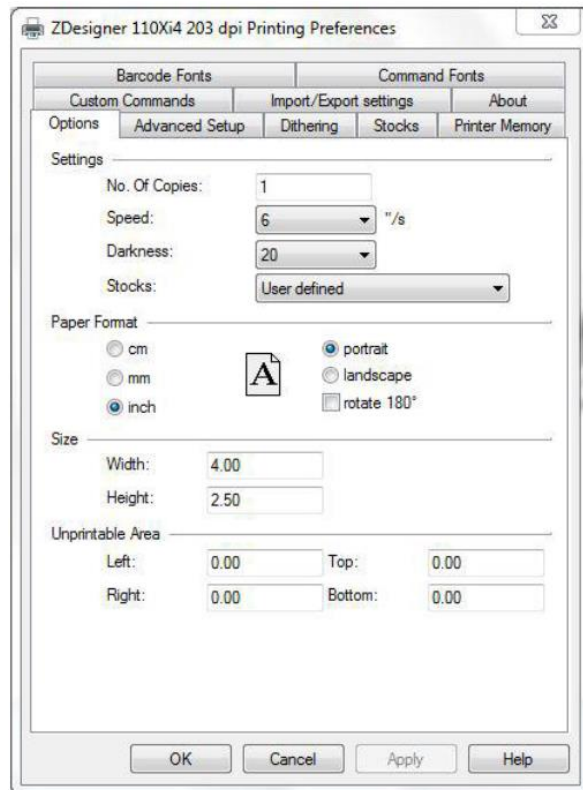
Service Documents from APPI

The following ZDesigner Dialog Box will appear.

Click on **Options Tab**.

Set setting as shown in the picture.

- **Speed** is the **Print Speed** of the Label
- **Darkness** is the temperature that the **Print Head** will use to print the label. Note: The higher the darkness, the darker the label will print. However, if the darkness is too high, then the ribbon may stick to the bag.
- **Width** is the width of the label
Note: The width cannot exceed the width of the print head.
- **Height** is the length of the label.
Note: The height of the label should be slightly longer than the label length.



If Label Software is warning that the label is too long, the Label Height in the Zebra Designer Print Driver is too short.

The longer the label, the more ribbon will be used.

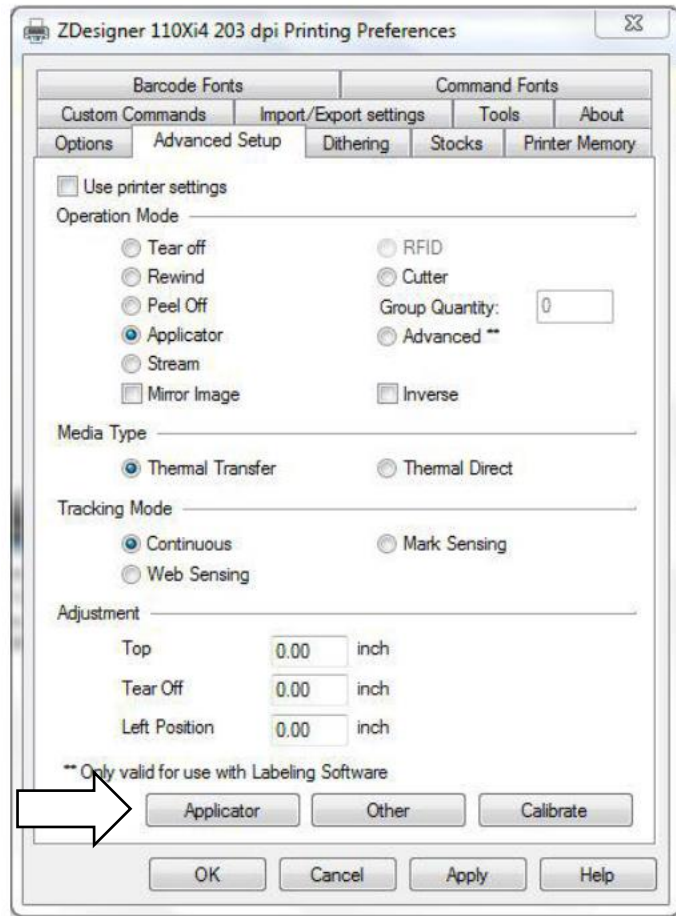


How To

Service Documents from APPI

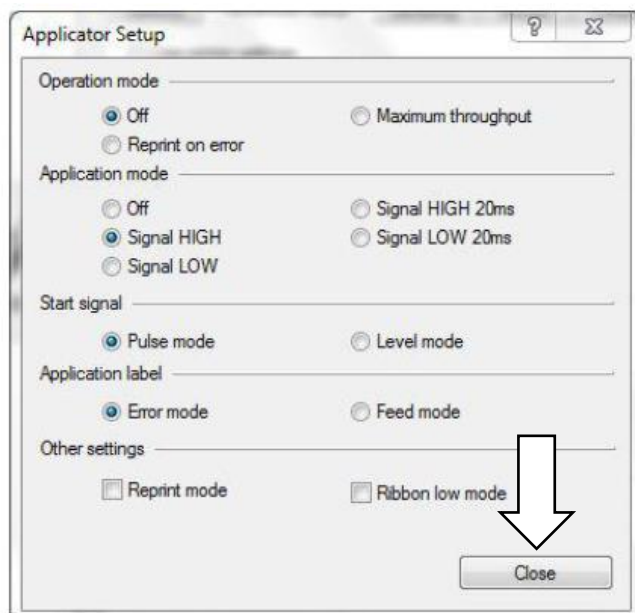
Enter settings as shown.

Click on the **Applicator Button**.



Enter settings as shown.

Click on the **Close Button**.





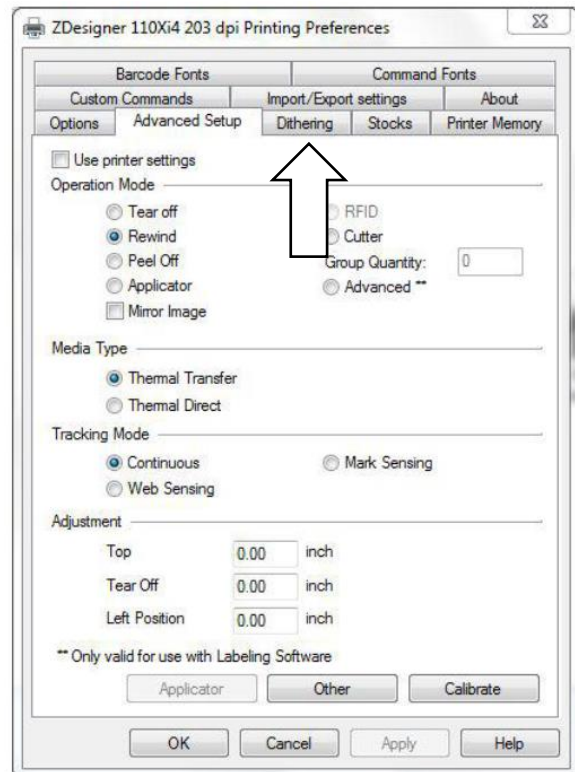
How To

Service Documents from APPI

Enter settings as shown.

(Rewind instead of Applicator)

Click on **Dithering Tab**.



Enter settings as shown.

Click on the **Apply Button**

Click on the **OK Button**

The **Zebra Designer Print Driver 110Xi4** settings are now set.

Note: Zebra Designer Print Driver 110Xi4 settings are similar

