

How To

Service Documents from APPI

Document: #HT000170

Document Title: Set Applicator Mode Via Zebra Setup Utilities

Product(s): Any TIZ Printer

Procedure:

Zebra Setup Utilities

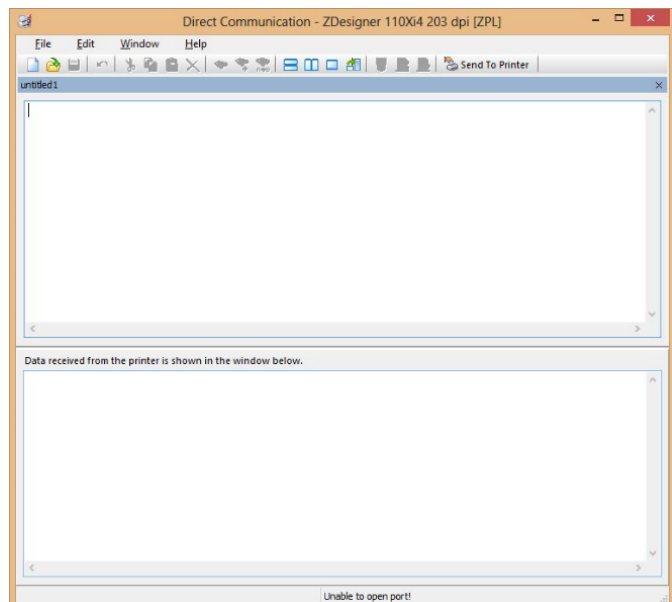
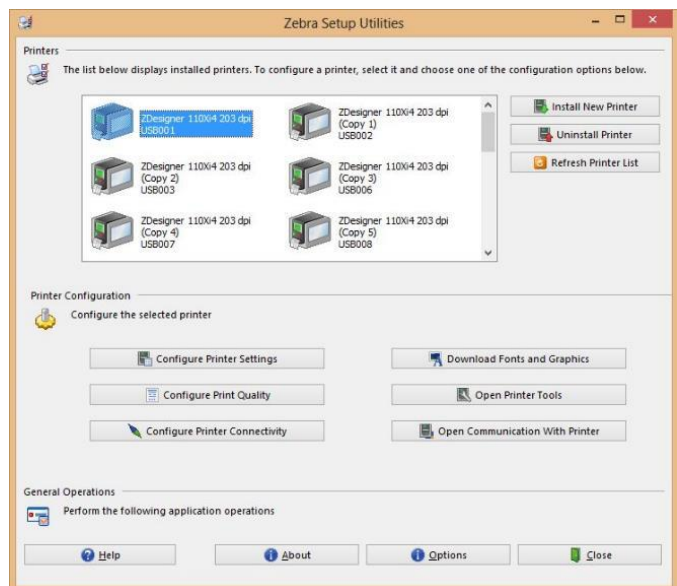
Zebra Setup Utilities (ZSU) is available for download [here](#).

On a computer that is connected to the printer via USB cable (such as a laptop), install the software.

Clear labels from the Bagger.

Open ZSU.

Once set up with ZSU, make sure the printer is highlighted, and click **Open Communication With Printer**



This window will appear.



How To

Service Documents from APPI

Type in exactly as shown, including the ^.

^XA

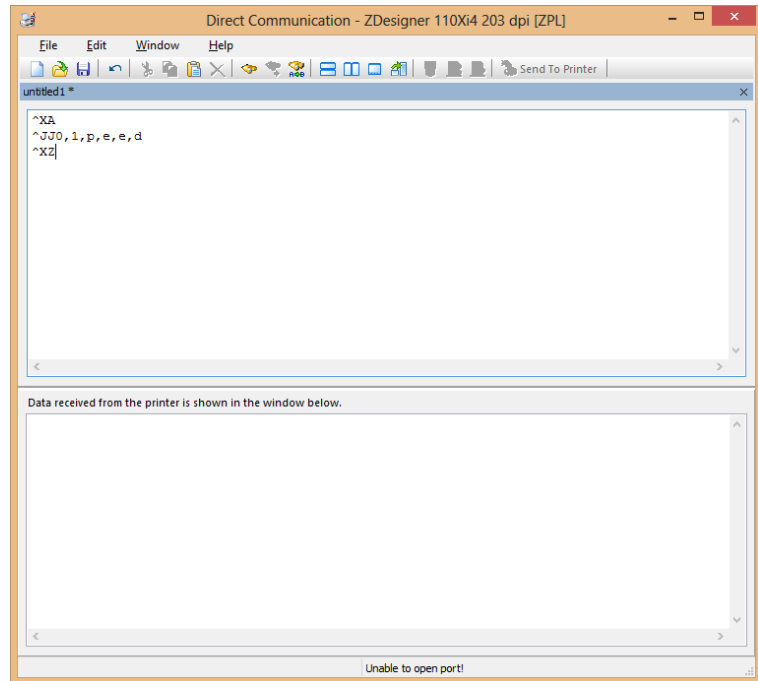
^JJ0,1,p,e,e,d

^XZ

When ready, click **Send To Printer**.

Exit out of **ZSU**. Send a label that is known to work properly, and print.

Compare label settings between working label and the label that caused problems.



ZDesigner Printer Driver Settings

The following **ZDesigner Dialog Box** can be found in the Labeling Software used. Check the Help Files on how to select the correct Print Driver and adjust the settings.

If no Labeling Software is be used or no access to the Labeling Software is possible, use the following procedure to access the **ZDesigner Dialog Box**:

1. In Windows go to *Control Panel* and select **Devices and Printers**.
2. Select the correct **Zebra Designer Printer** and Right-Click.
3. Select **Printing Preferences** and Left-Click.

The following **ZDesigner Dialog Box** will appear.

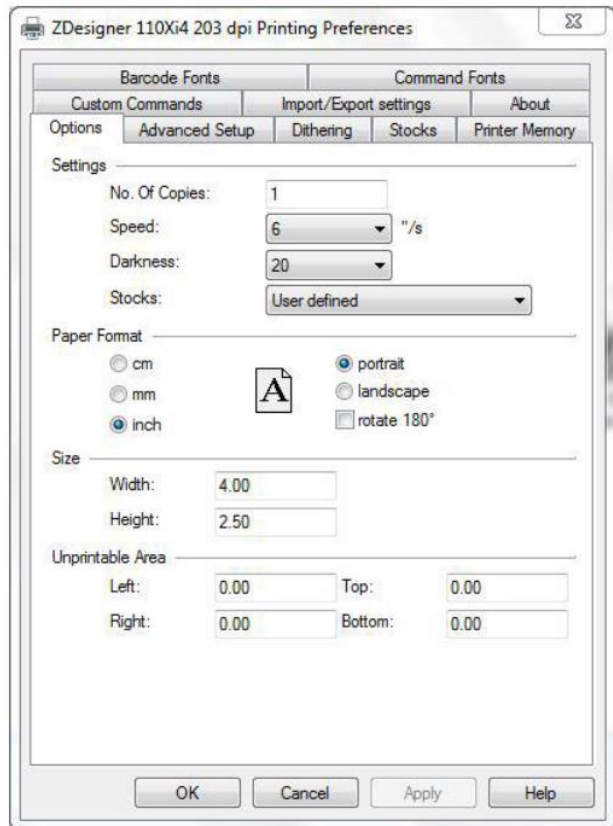
How To

Service Documents from APPI

Click on **Options Tab**

Set setting as shown in the above picture.

- **Speed** is the Print Speed of the Label
- **Darkness** is the temperature that the print head will use to print the label. *Note: The higher the darkness the dark the label will print but if the darkness is to high then the ribbon may stick to the bag.*
- **Width** is the width of the label
Note: The width cannot exceed the width of the print head.
- **Height** is the length of the label.
Note: The height of the label should be slightly longer than the label length.



If Label Software is warning that the label is too long the **Label Height** in the **Zebra Designer Print Driver** is too short.

The longer the label the more ribbon will be used.

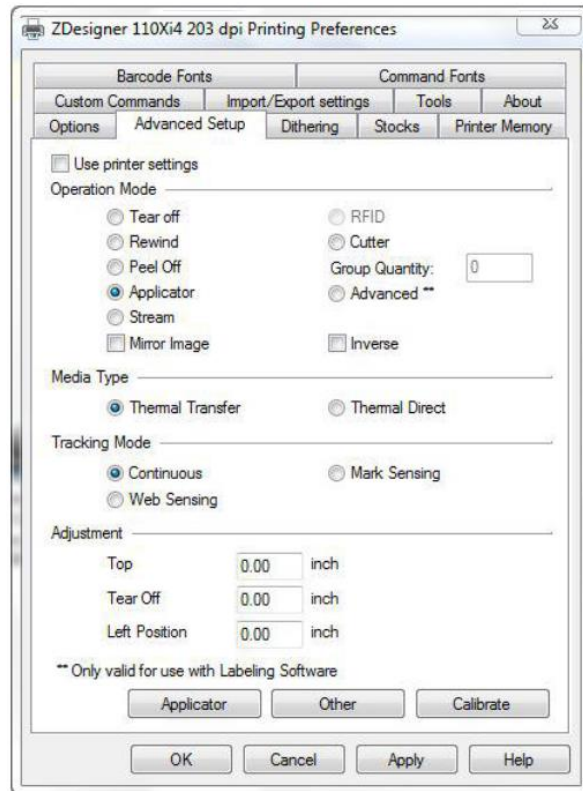


How To

Service Documents from APPI

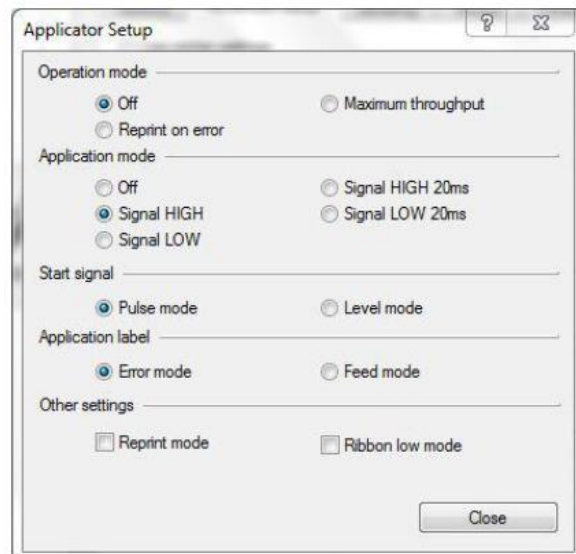
Set **Settings** as shown.

Click on the **Applicator Button**.



Set **Settings** as shown.

Click the **Close Button**.





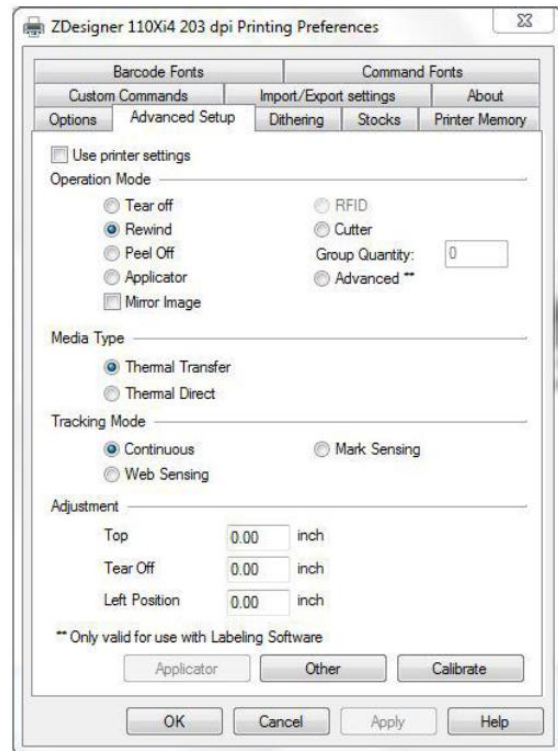
How To

Service Documents from APPI

Set **Settings** as shown.

(**Rewind** instead of **Applicator**)

Click on **Dithering** Tab.



Set **Settings** as shown.

Click on the **Apply** Button

Click on the **OK** Button

The **Zebra Designer Print Driver 110Xi4** setting are now set.

Note: Zebra Designer Print Driver 110Xi4 setting are similar.

