

How To

Service Documents from APPI

Document: #HT000161

Document Title: Force Stored Labels to Contain Data

Product(s): Any TIZ Printer

Procedure:

Stored Labels and Databases

The Zebra printer does not have the option to store labels with database data in them. Instead it has the option to store a label template, and only send the actual database data over to the printer, and the printer will assemble the data and the template into a full label.

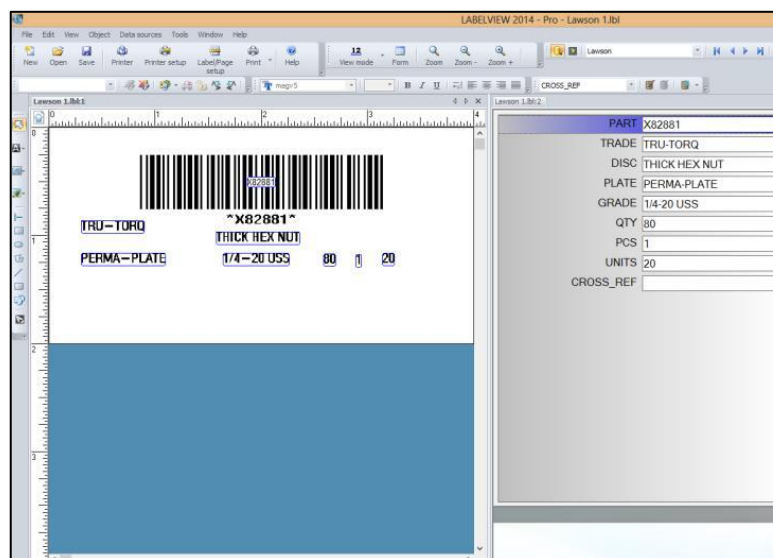
You can store a label with fixed text without any problems. There cannot be any variables in the label, date, time, database, spreadsheet info, etc.

The workaround for this is to first print the database label to a text file, move three lines of text, and then send the label to the printer via Zebra Setup Utilities.

LabelView

In LabelView, open the label as usual.

Choose your data.





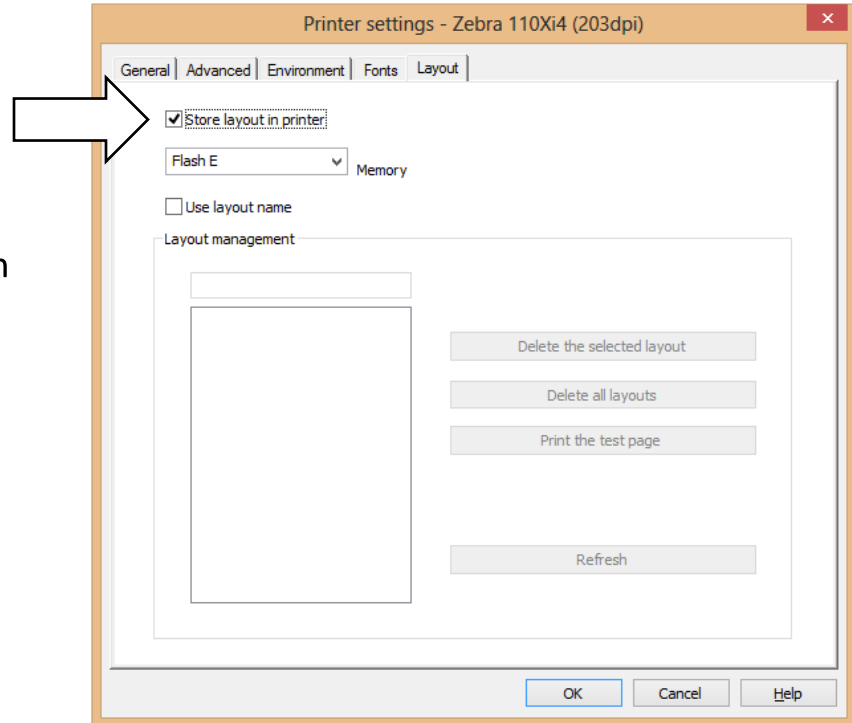
How To

Service Documents from APPI

Make sure “Store Layout in printer” is selected.

Click **OK**.

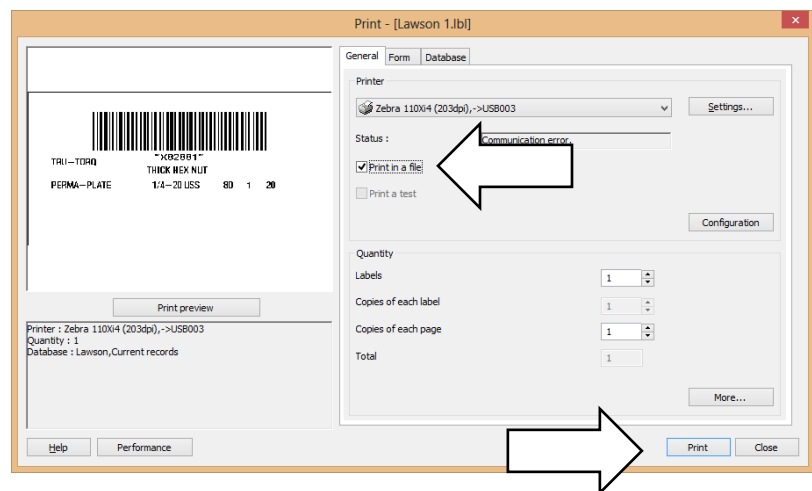
Click **Print**



The printer must be the Zebra you want to store your labels on.

Check **PRINT IN A FILE**.

Click **PRINT**.





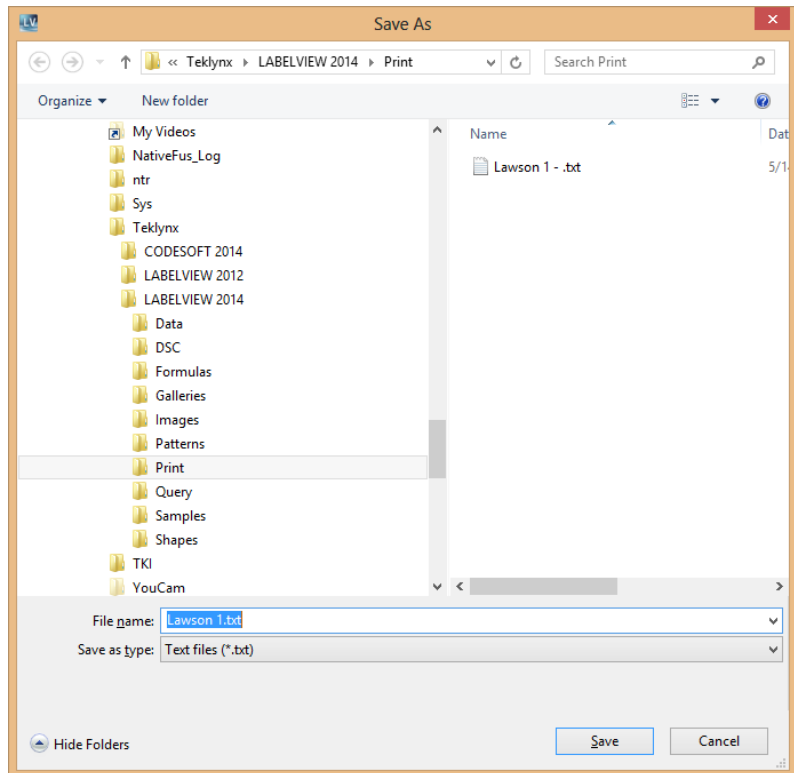
How To

Service Documents from APPI

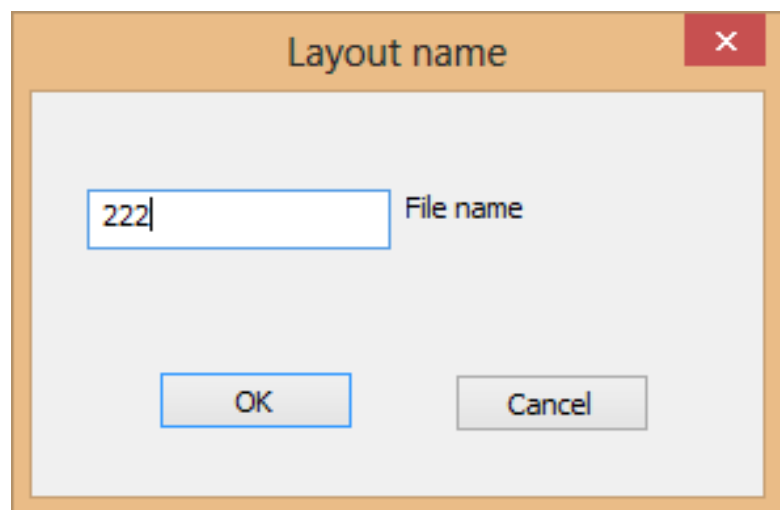
The **Save As** dialog will open to LabelView's default save directory.

Either save the file here, or somewhere easy to find. The Desktop is a good place.

Change file name, if needed.



You will be asked to provide a file name. You can choose anything between 4 – 999. In this example, 222 is used.





How To

Service Documents from APPI

Open the file you saved in Notepad.

Note: your label will look different.

Locate ^XFE:

The line actually says ^XFE:222.ZPL

The line in your label will be different, depending on the numerical file name you chose.

This line, and the two preceding ones, needs to be moved.

```
Lawson2.txt - Notepad
File Edit Format View Help
^XA
^MCY
^XZ
^XA
^FVN^CFD,24^PW812^LH0,0
^CI0^PR6^LL406^MNN^MTT^MMR^MD25.0^JJ0,1^PON^PMN^LRN
^LS0
^LT0
^XZ
^XA
^DFE:222.ZPL
^LRN
^XZ
^XA
^XFE:222.ZPL
^BY4,2.0^F0174,53^B3N,Y,102,N^FVX82893^FS
^A0N,23,36^F0339,165^FV*X82893*^FS
^A0N,25,26^F063,176^FVTRU-TORQ^FS
^A0N,25,26^F0320,197^FVTHICK HEX NUT^FS
^A0N,25,26^F063,237^FVPERMA-PLATE^FS
^A0N,25,26^F0333,237^FV3/8-24 SAE^FS
^A0N,25,26^F0525,237^FV65^FS
^A0N,25,26^F0587,238^FV1^FS
^A0N,25,26^F0638,237^FV20^FS
^PQ1,0,1,Y
^XZ
```



How To

Service Documents from APPI

Highlight the three lines,

They must be moved down
to just above ^PQ1

Cut them out.

```
Lawson2.txt - Notepad
File Edit Format View Help
^XA
^MCY
^XZ
^XA
^FVN^CFD,24^PW812^LH0,0
^CI0^PR6^LL406^MNN^MTT^MMR^MD25.0^JJ0,1^PON^PMN^LRN
^LS0
^LT0
^XZ
^XA
^DFE: 222.ZPL
^LRN
^XZ
^XA
^XFE: 222.ZPL
^BY4,2.0^F0174,53^B3N,Y,102,N^FVX82893^FS
^A0N,23,36^F0339,165^FV*X82893*^FS
^A0N,25,26^F063,176^FVTRU-TORQ^FS
^A0N,25,26^F0320,197^FVTHICK HEX NUT^FS
^A0N,25,26^F063,237^FVPERMA-PLATE^FS
^A0N,25,26^F0333,237^FV3/8-24 SAE^FS
^A0N,25,26^F0525,237^FV65^FS
^A0N,25,26^F0587,238^FV1^FS
^A0N,25,26^F0638,237^FV20^FS
^PQ1,0,1,Y
^XZ
```



How To

Service Documents from APPI

Delete any open lines left from cutting out the three lines.

```
Lawson2.txt - Notepad
File Edit Format View Help
^XA
^MCY
^XZ
^XA
^FVN^CFD,24^PW812^LH0,0
^CI0^PR6^LL406^MNN^MTT^MMR^MD25.0^JJ0,1^PON^PMN^LRN
^LS0
^LT0
^XZ
^XA
^DFE:222.ZPL
^LRN

^BY4,2.0^F0174,53^B3N,Y,102,N^FVX82893^FS
^A0N,23,36^F0339,165^FV*X82893*^FS
^A0N,25,26^F063,176^FVTRU-TORQ^FS
^A0N,25,26^F0320,197^FVTHICK HEX NUT^FS
^A0N,25,26^F063,237^FVPERMA-PLATE^FS
^A0N,25,26^F0333,237^FV3/8-24 SAE^FS
^A0N,25,26^F0525,237^FV65^FS
^A0N,25,26^F0587,238^FV1^FS
^A0N,25,26^F0638,237^FV20^FS
^PQ1,0,1,Y
^XZ
```



How To

Service Documents from APPI

Make space on the line above ^PQ1 to paste the three lines you just cut out.

```
Lawson2.txt - Notepad
File Edit Format View Help
^XA
^MCY
^XZ
^XA
^FWN^CFD,24^PW812^LH0,0
^CI0^PR6^LL406^MNN^MTT^MMR^MD25.0^JJ0,1^PON^PMN^LRN
^LS0
^LT0
^XZ
^XA
^DFE:222.ZPL
^LRN
^BY4,2.0^F0174,53^B3N,Y,102,N^FVX82893^FS
^A0N,23,36^F0339,165^FV*X82893*^FS
^A0N,25,26^F063,176^FVTRU-TORQ^FS
^A0N,25,26^F0320,197^FVTHICK HEX NUT^FS
^A0N,25,26^F063,237^FVPERMA-PLATE^FS
^A0N,25,26^F0333,237^FV3/8-24 SAE^FS
^A0N,25,26^F0525,237^FV65^FS
^A0N,25,26^F0587,238^FV1^FS
^A0N,25,26^F0638.237^FV20^FS
^PQ1,0,1,Y
^XZ
```



How To

Service Documents from APPI

Paste in the three lines.
You can now Save the file.

```
File Edit Format View Help
^XA
^MCY
^XZ
^XA
^FVN^CFD,24^PW812^LH0,0
^CI0^PR6^LL406^MNN^MTT^MMR^MD25.0^JJ0,1^PON^PMN^LRN
^LS0
^LT0
^XZ
^XA
^DFE:222.ZPL
^LRN
^BY4,2.0^F0174,53^B3N,Y,102,N^FVX82893^FS
^A0N,23,36^F0339,165^FV*X82893*^FS
^A0N,25,26^F063,176^FVTRU-TORQ^FS
^A0N,25,26^F0320,197^FVTHICK HEX NUT^FS
^A0N,25,26^F063,237^FVPERMA-PLATE^FS
^A0N,25,26^F0333,237^FV3/8-24 SAE^FS
^A0N,25,26^F0525,237^FV65^FS
^A0N,25,26^F0587,238^FV1^FS
^A0N,25,26^F0638,237^FV20^FS
^XZ
^XA
^XFE:222.ZPL|
^PQ1,0,1,Y
^XZ
```




How To

Service Documents from APPI

Select everything in the file.

Copy it.

Then you can close the file, the rest will happen in Zebra Setup Utilities.

```
File Edit Format View Help
^XA
^MCY
^XZ
^XA
^FWN^CFD,24^PW812^LH0,0
^CI0^PR6^LL406^MNN^MTT^MMR^MD25.0^JJ0,1^PON^PMN^LRN
^LS0
^LT0
^XZ
^XA
^DFE:222.ZPL
^LRN
^BY4,2.0^F0174,53^B3N,Y,102,N^FVX82893^FS
^A0N,23,36^F0339,165^FV*X82893*^FS
^A0N,25,26^F063,176^FVTRU-TORQ^FS
^A0N,25,26^F0320,197^FVTHICK HEX NUT^FS
^A0N,25,26^F063,237^FVPERMA-PLATE^FS
^A0N,25,26^F0333,237^FV3/8-24 SAE^FS
^A0N,25,26^F0525,237^FV65^FS
^A0N,25,26^F0587,238^FV1^FS
^A0N,25,26^F0638,237^FV20^FS
^XZ
^XA
^XFE:222.ZPL
^PQ1,0,1,Y
^XZ
```

How To

Service Documents from APPI

Zebra Setup Utilities

This document assumes the ZDesigner printer driver is already installed.

Zebra Setup Utilities (ZSU) is available for download [here](#).

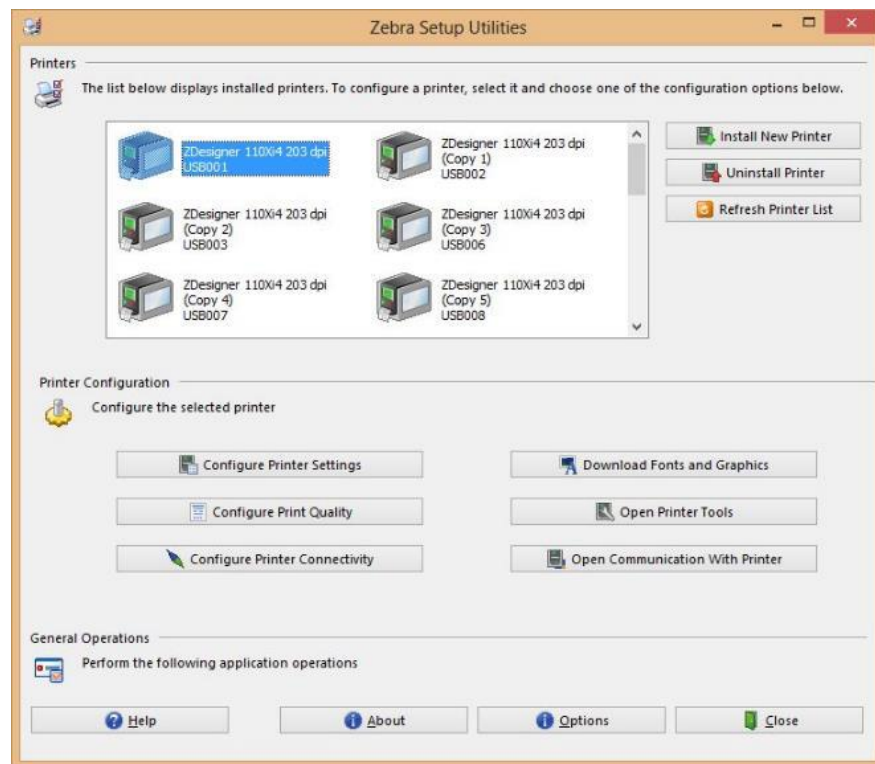
You may need to scroll down the page to find the **Zebra Setup Utilities**.

Install the software on a computer that is connected to the printer via USB cable (such as a laptop).

Clear labels from the Bagger.

Open **ZSU**.

Once set up with **ZSU**, make sure the printer is highlighted, and click **“Open Communication With Printer”**

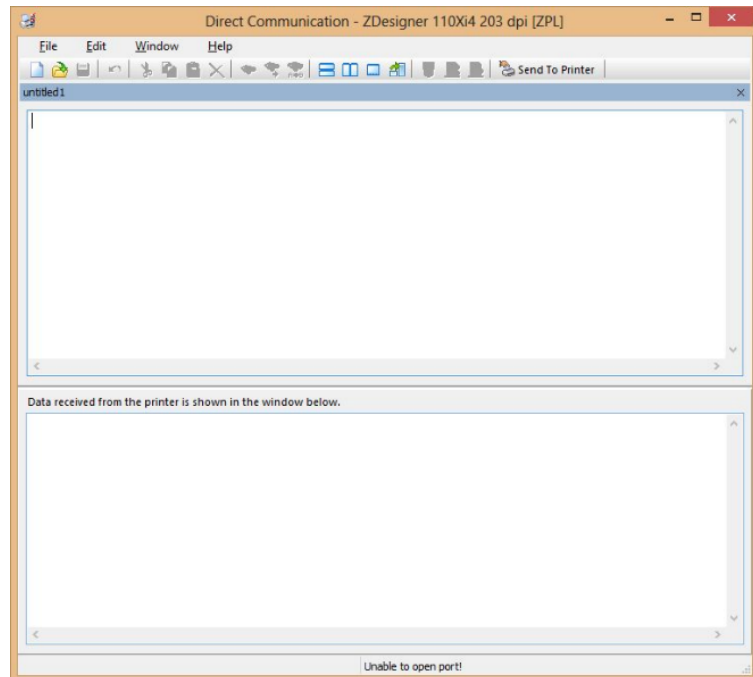




How To

Service Documents from APPI

This window will appear.



Paste in what you copied from the label file. In this example it will look like this:

When ready, click **“Send To Printer”**.

Confirm on the Bagger that it has received the label.

You can now print the label.

You can also all up the label via the numerical file name you chose.

