

# HOW TO Service documents from APPI

**Document: #HT000200**

**Document Title: Ti-1000Z<sub>T</sub> printer setup**

**Product(s): Ti-1000Z<sub>T</sub>**

**Procedure:**

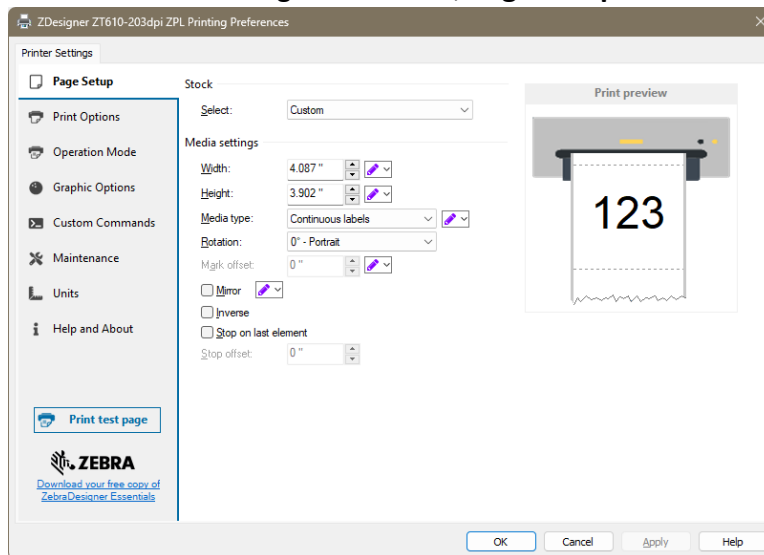
The Zebra driver can be downloaded here:

<https://www.zebra.com/us/en/support-downloads/printers/industrial/zt610.html#Tab-item-e13faeefe6-tab>

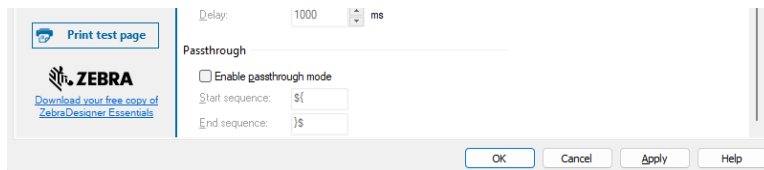
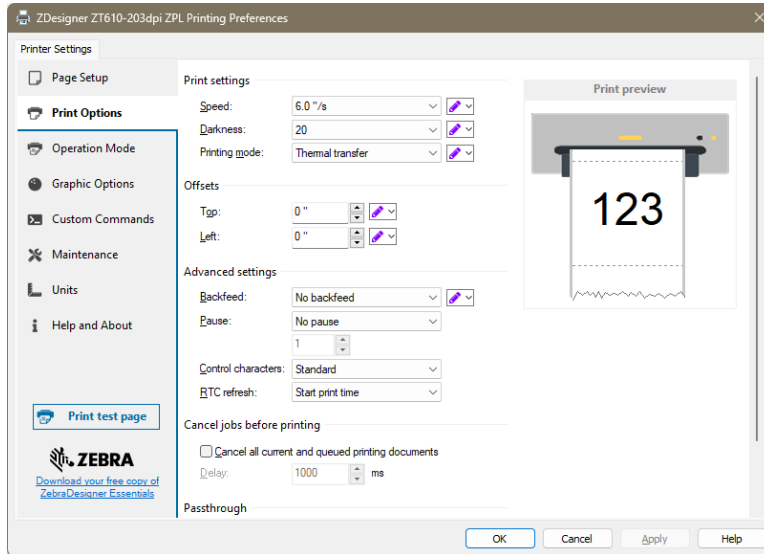
Installation instructions are here:

[https://supportcommunity.zebra.com/s/article/000027281?language=en\\_US](https://supportcommunity.zebra.com/s/article/000027281?language=en_US)

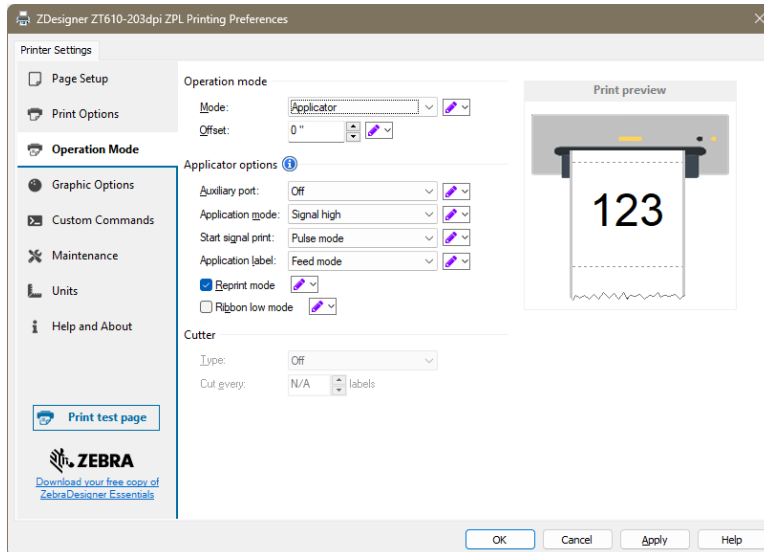
In Printing Preferences, **Page Setup**:



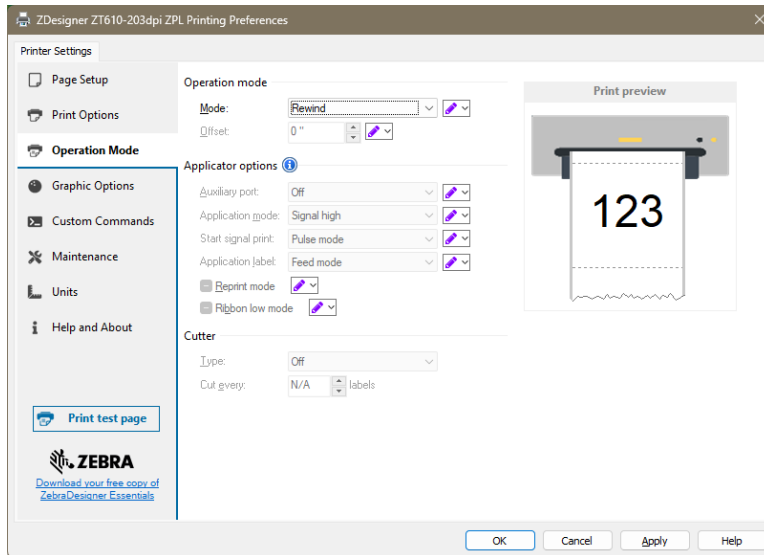
## Print Options



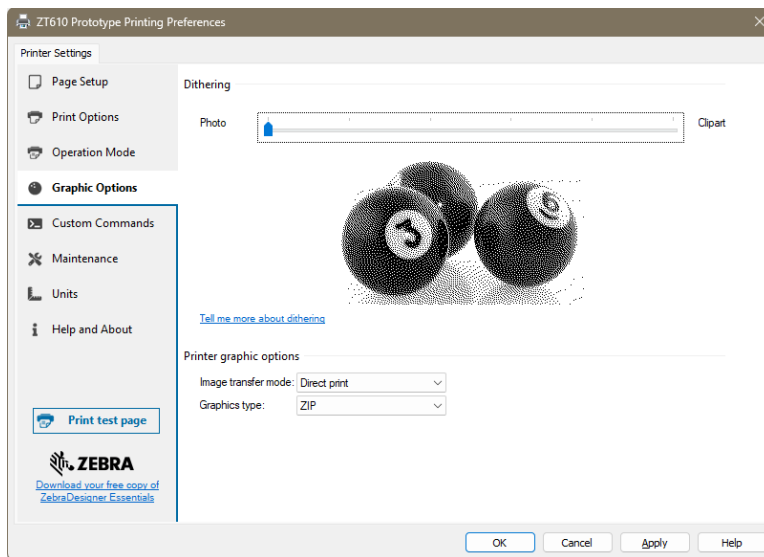
Operation mode:  
In **Mode**, click Applicator. Then set as shown:



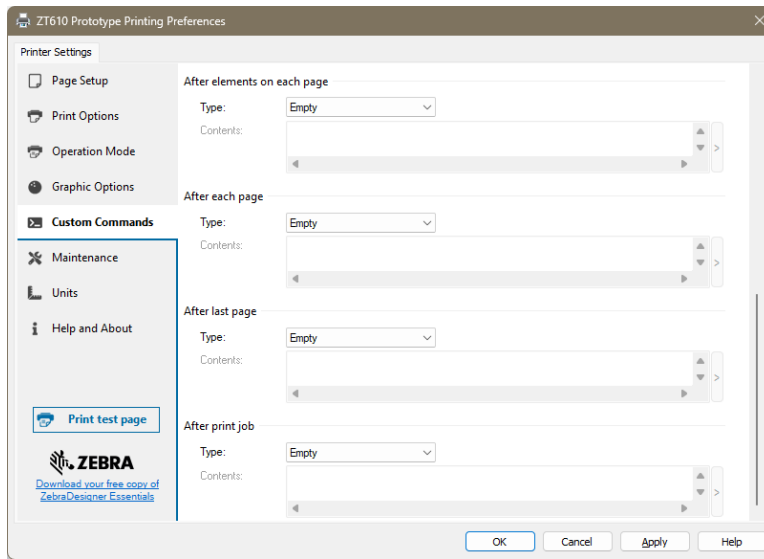
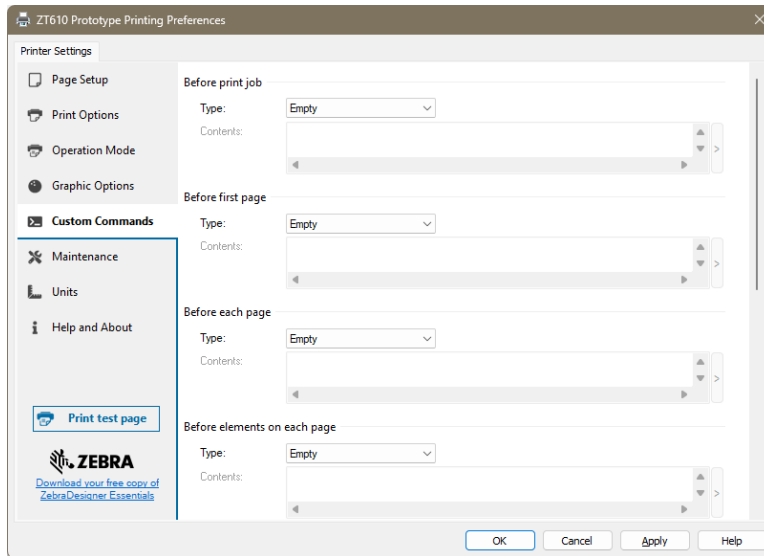
Then change **Mode** to Rewind.



## Graphic Options



## Custom Commands should all be empty.



In printer Properties, go to **Settings** tab, **Media feed**.  
Set as shown:

