



How To

Service Documents from APPI

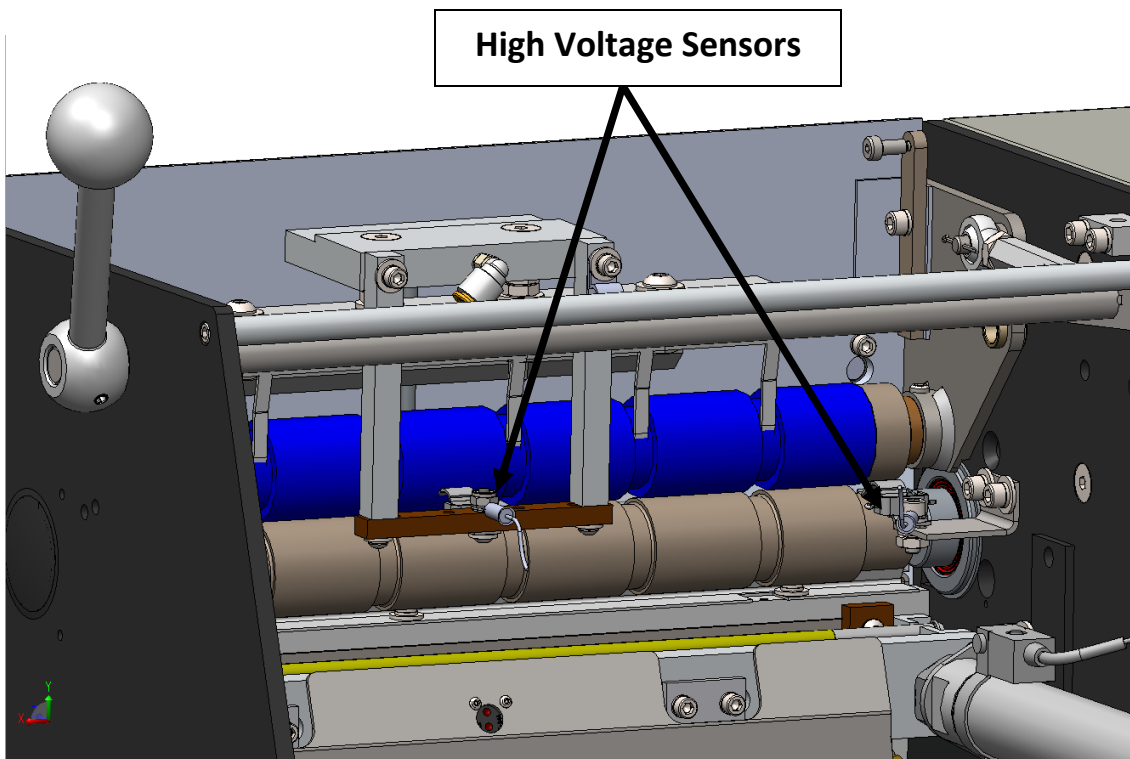
Document: #HT000119

Document Title: Replace the High Voltage Sensors

Product(s): T-375

Procedure:

With Main Power OFF, remove the Top Cover of the T-375 and locate the two High Voltage Sensors.



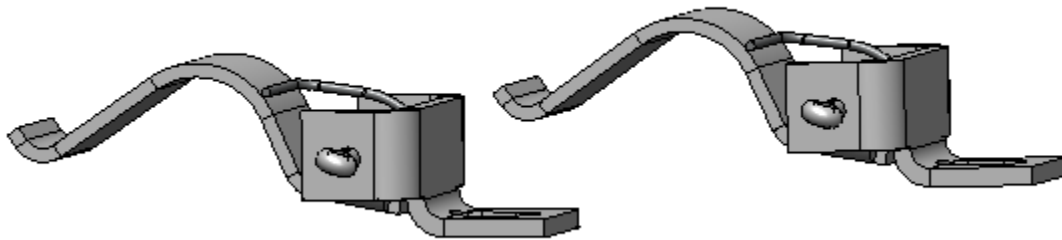
Functionally, the **High Voltage Sensor** that acts as the Perf Sensor is connected to the output of the **High Voltage Printed Circuit Board (PCB)** and conducts the voltage to the Steel Roller. The remaining **High Voltage Sensor** connects the Steel Roller to Ground, completing the circuit.



How To

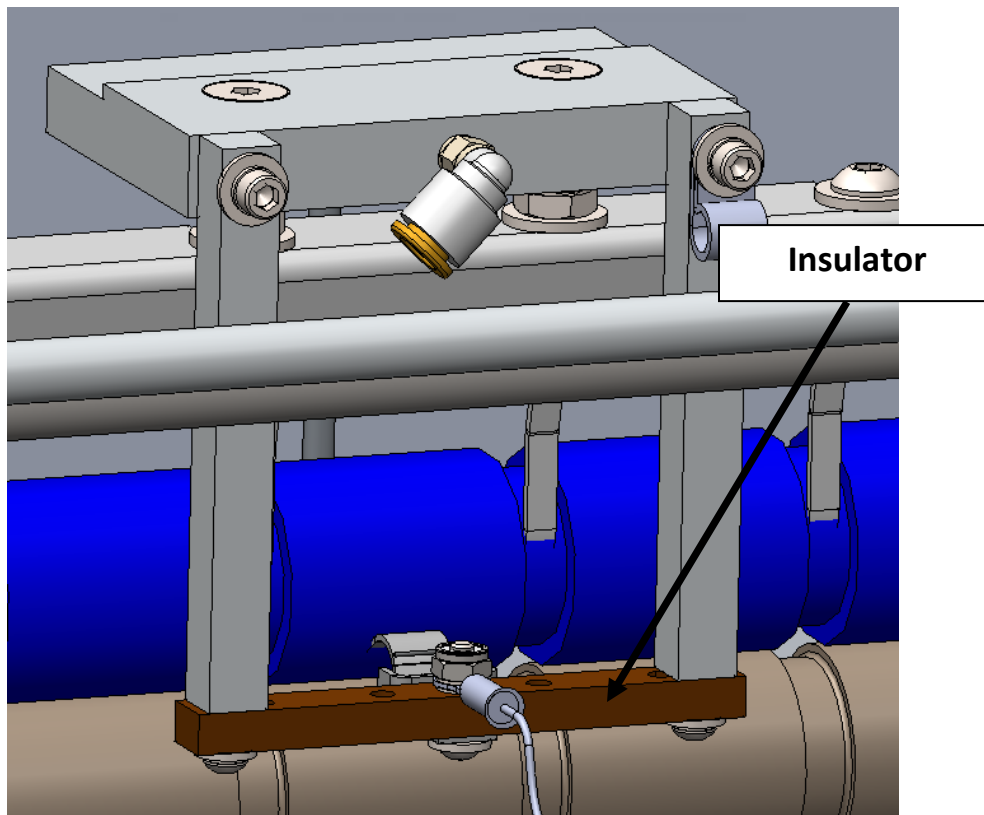
Service Documents from APPI

The same part (TA-T14-00124-1) is used for both the Perf Sensor and the Ground Sensor.



Replace Perf Sensor:

The Perf Sensor is attached to an insulator that is part of the Air Knife Assembly.

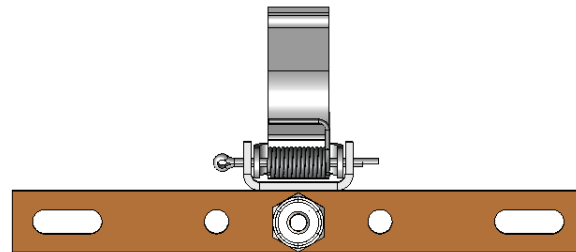
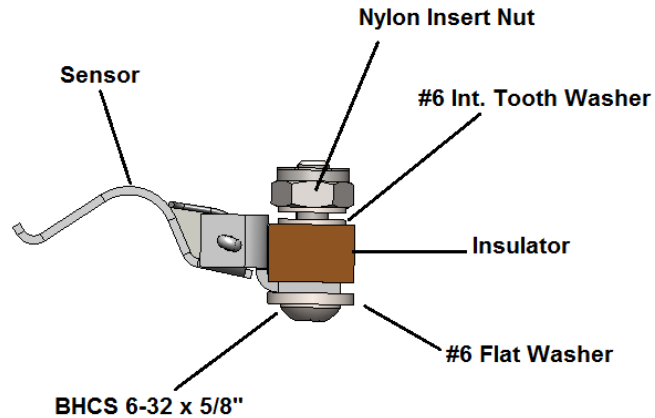




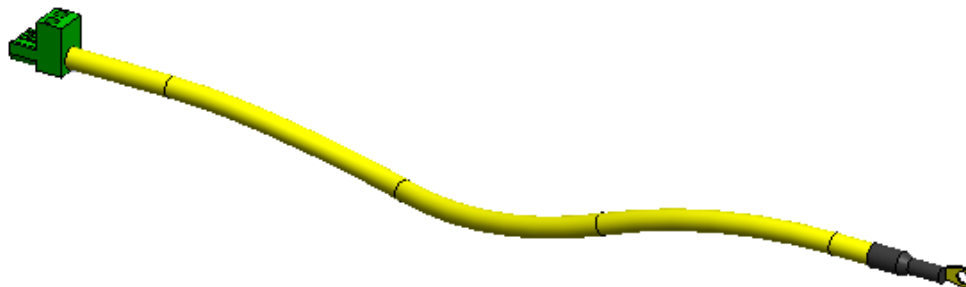
How To

Service Documents from APPI

The Perf Sensor is attached to the Insulator as shown below:



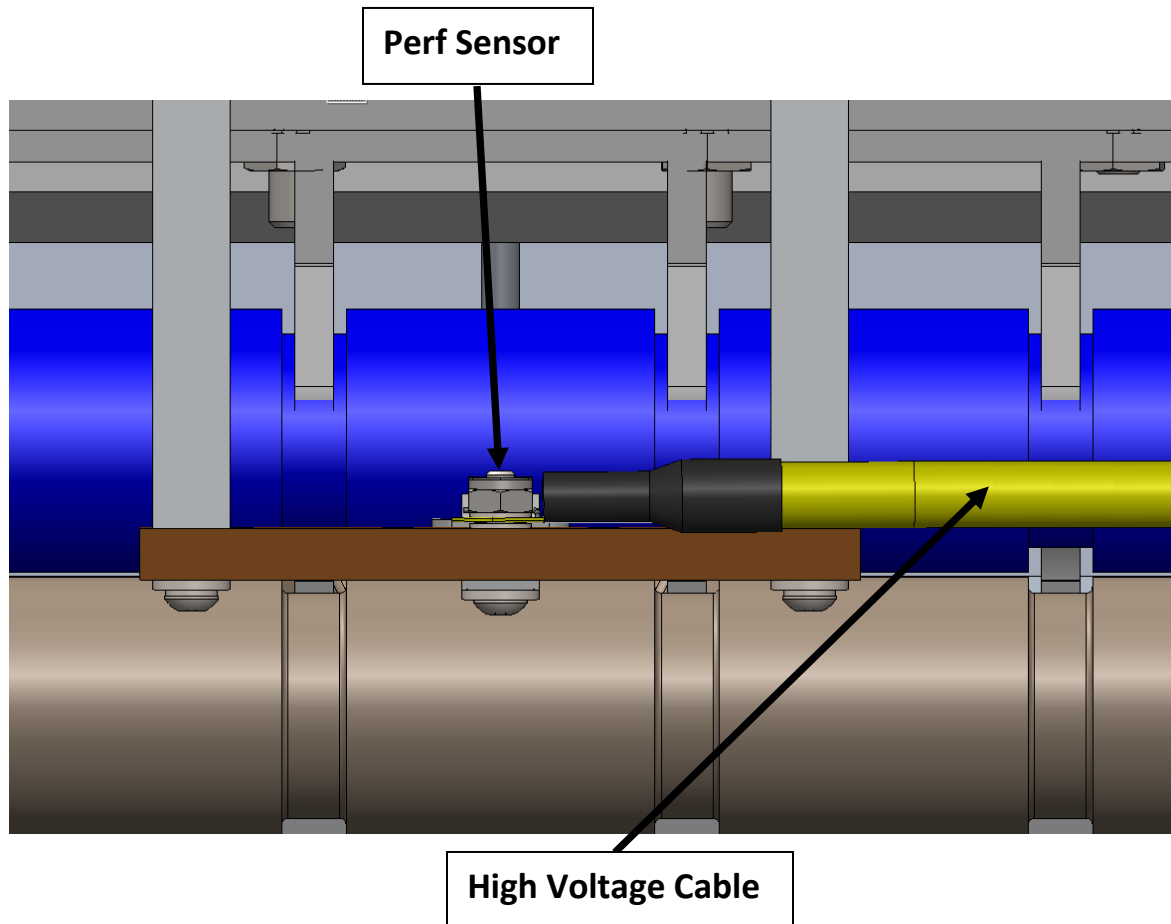
The Perf Sensor is connected to the High Voltage Board using the High Voltage Cable, which is secured under the Hex Nut of the Perf Sensor assembly.





How To

Service Documents from APPI



Adjust the placement of the Perf Sensor so that it is in contact with the Steel Roller.

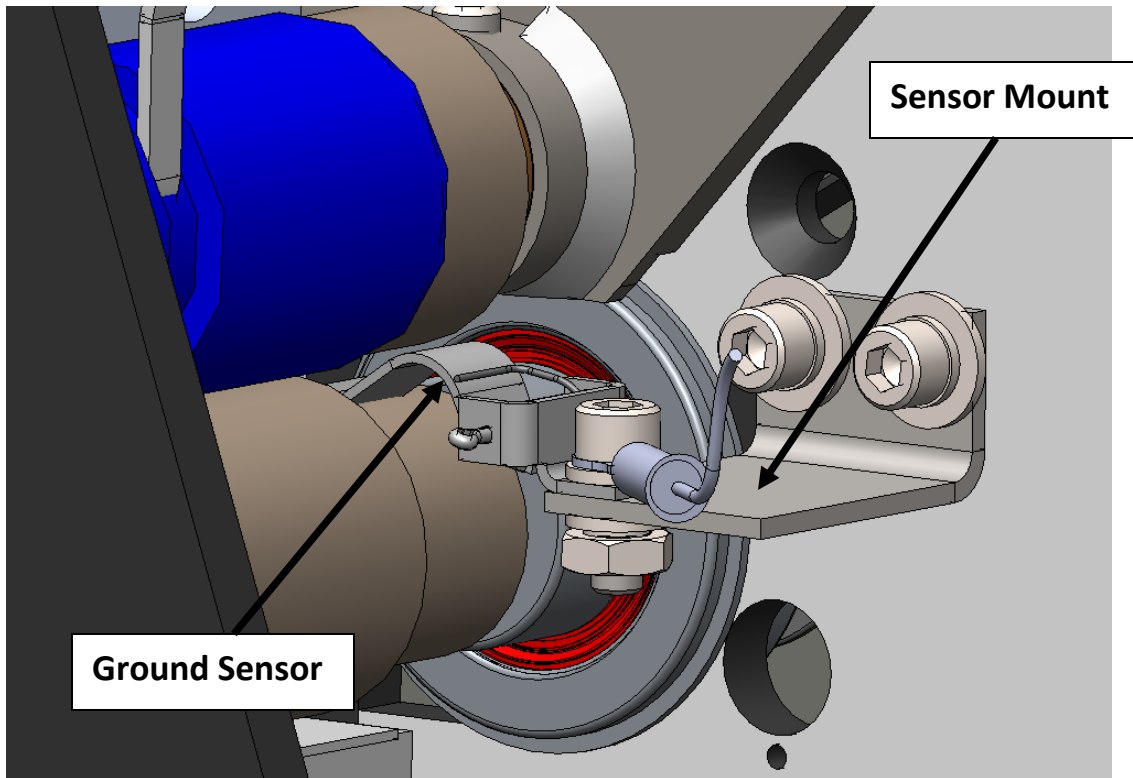


How To

Service Documents from APPI

Replace Ground Sensor:

The Ground Sensor is attached to the Sensor Mount.

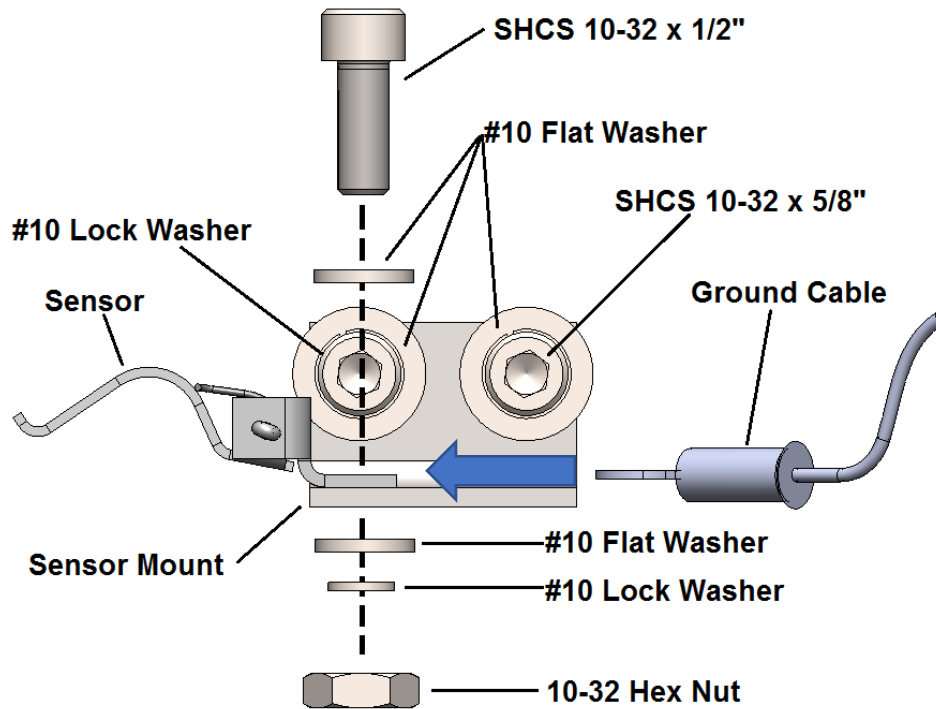


Align the Grounding Sensor so that it is touching the Steel Roller.

How To

Service Documents from APPI

The Ground Sensor is attached to the Sensor Mount as shown below:



Plug in the Ground Wire Connector.

