

How To

Service Documents from APPI

Document: #HT000080

Document Title: Enter Factory Settings

Product(s): T-375

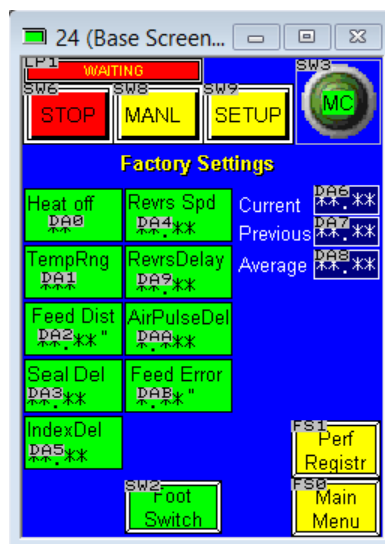
Procedure:

After downloading new programs in PLC and Touch Screen; enter Factory Settings.

Standard Factory Settings:

Parameter	Setting
Heat Off	60
Temp Range	20
Feed Distance	0.05
Seal Delay	0.00
Index Del	0.00
Revs Spd	20.00
Revs Delay	0.00
AirPulseDel	0.00
Feed Error	1.25

Go to Main Menu/Tech Assist/Factory Settings

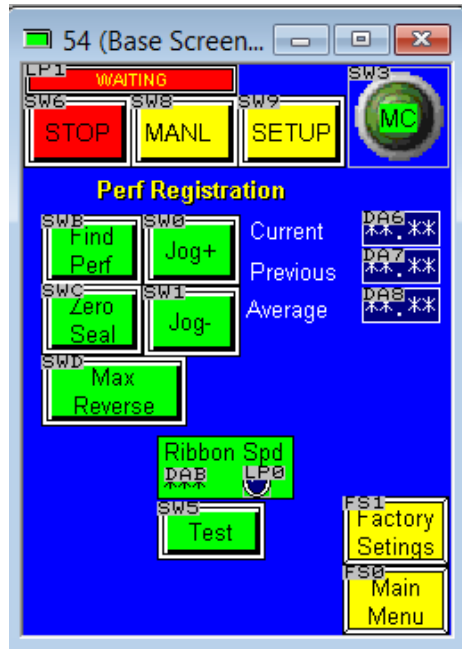




How To

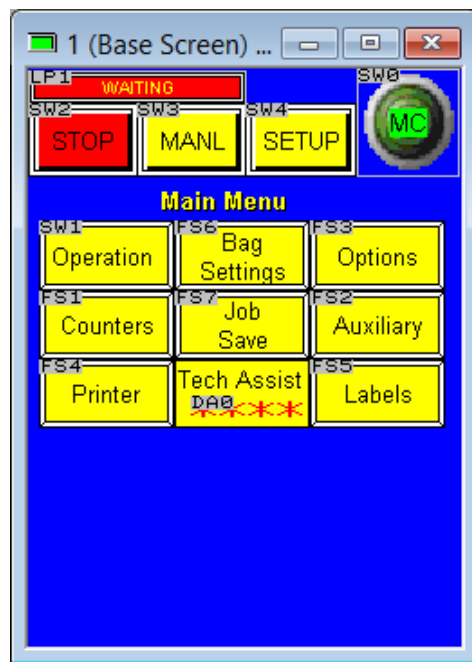
Service Documents from APPI

After entering factory Settings press **Perf Registration**.



Perform Perf Registration

Press **Main Menu**

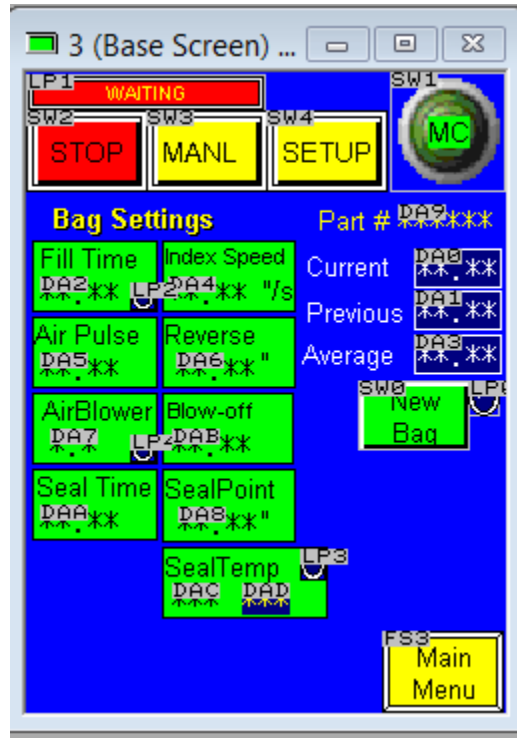




How To

Service Documents from APPI

Press **Bag Settings**:



Bag Settings:

Parameter	Setting
Fill Time	0.4
Air Pulse	0.25
Air Blower	9.9
Seal Time	0.4
Index Speed	6.0
Reverse	1.0
Blow Off	0.25
Seal Point	1.00
SealTemp	330

Note: Do Not Activate Options



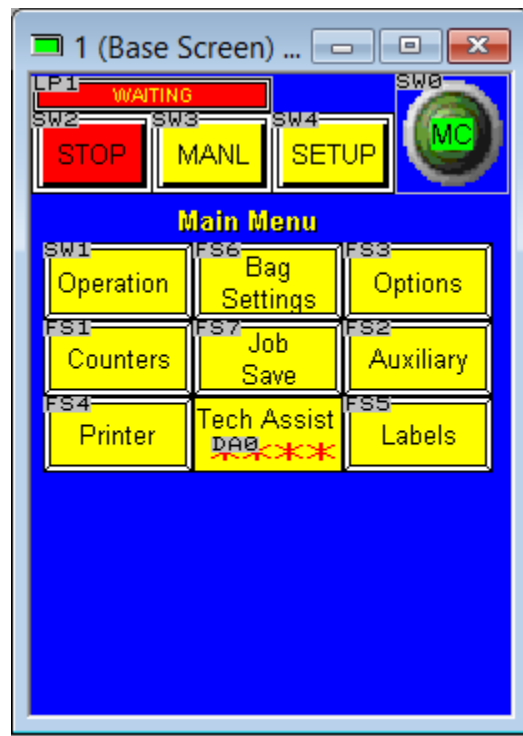
How To

Service Documents from APPI

Press **New Bag** and operate the T-375 as Bagger to confirm Perf Registration and bag length.

Cycle bagger until Current, Previous, and Average are about the same length. Press **New Bag** and **Cycle Bagger** again if needed.

Press **Main Menu**.



Press **Tech Assist**

On Keypad enter code **1001**; press **Enter**.

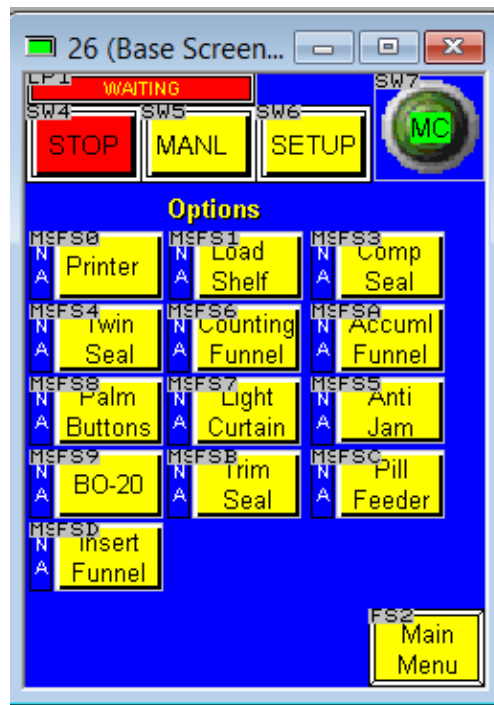


How To

Service Documents from APPI



Press Option PassW

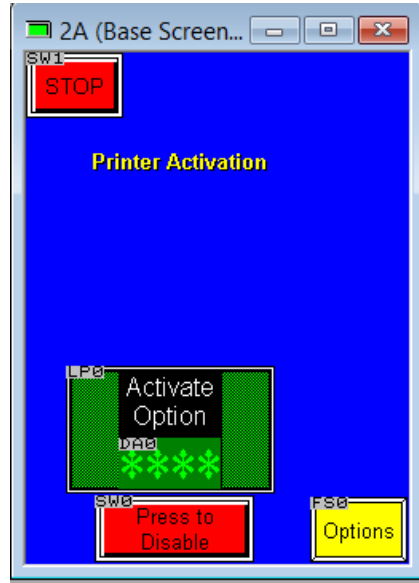




How To

Service Documents from APPI

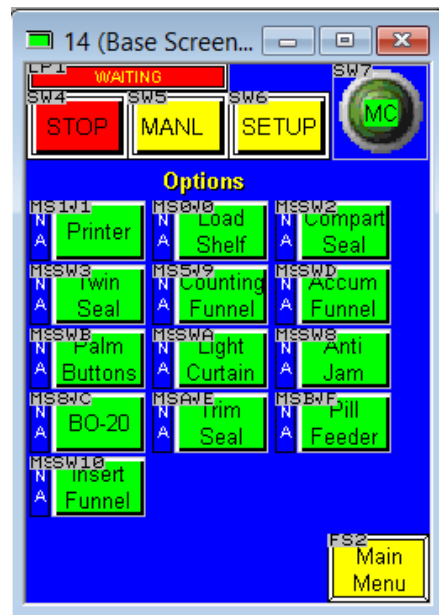
Press Printer



Press **Activate Option**

On Keypad enter code **1005**; press **Enter**

Press **Option Button**

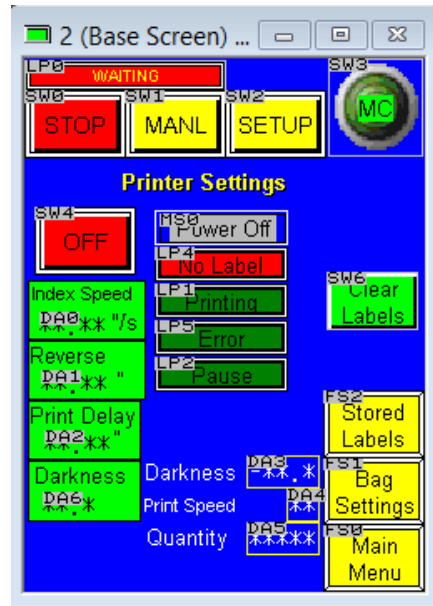




How To

Service Documents from APPI

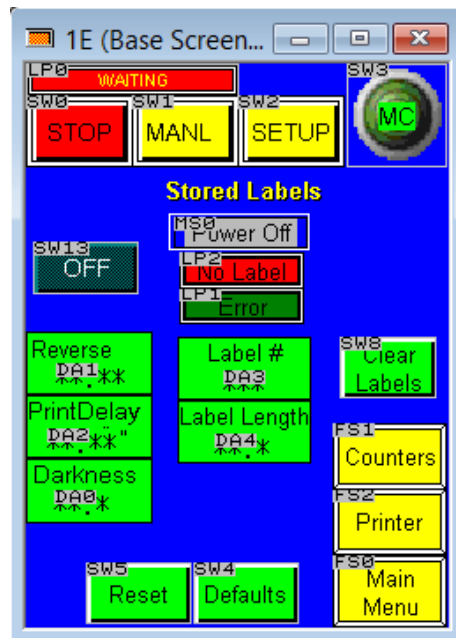
Press **Printer Button**



Press the Red **OFF** Button; Button should toggle to Green **ON**

Press **Green Darkness** Button and enter **20**.

Press **Yellow Stored Labels Button**.





How To

Service Documents from APPI

Press the Red **OFF** Button; Button should toggle to Green **ON**

Press **Green Label Button**; on Keypad select **1** and press **Enter**

Press **Green Label Length Button**; on Keypad select **4** and press **Enter**

Cycle Bagger and adjust **Green Print Delay Button** as needed to position label on bag.