

# How To

## Service Documents from APPI

**Document: #HT000155**

**Document Title: Store and Print Labels for Crosstex T-1000**

**Product(s): T-1000**

### Procedure:

#### *Zebra Setup Utilities*

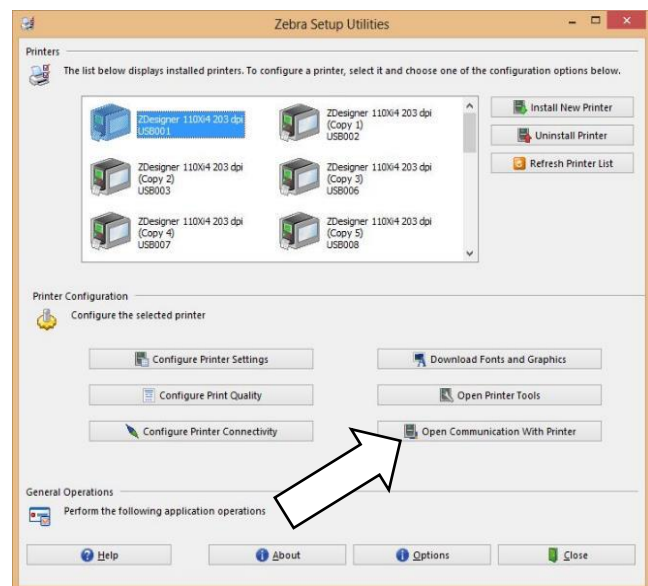
Zebra Setup Utilities (ZSU) is available for download [here](#).

You may need to scroll down the page to find the **Zebra Setup Utilities**.

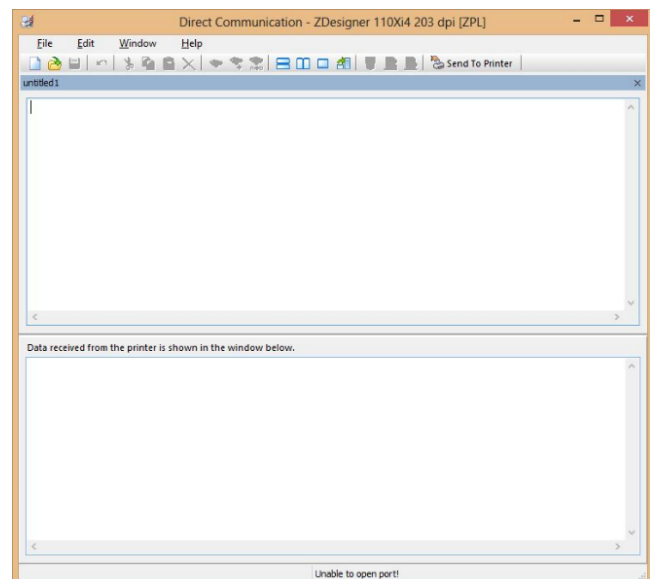
Install the software on a computer that is connected to the printer via USB cable (such as a laptop).

Open **ZSU**.

Once set up with **ZSU**, make sure your printer is highlighted, and click “**Open Communication With Printer**”.



This window will appear.

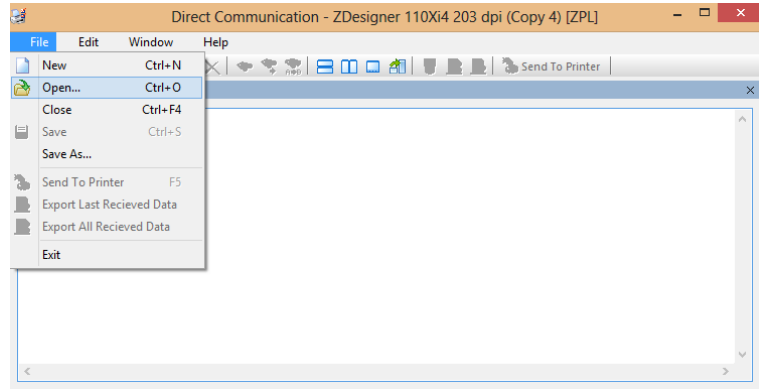




# How To

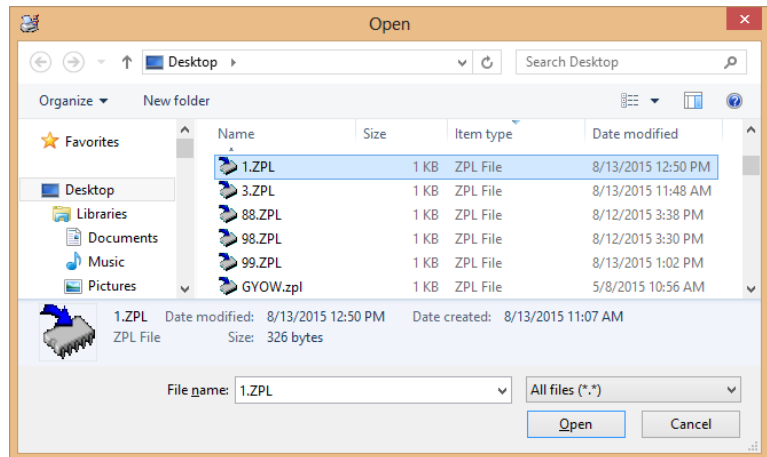
## Service Documents from APPI

Go to “File – Open”.



Browse to where your .ZPL files are saved.

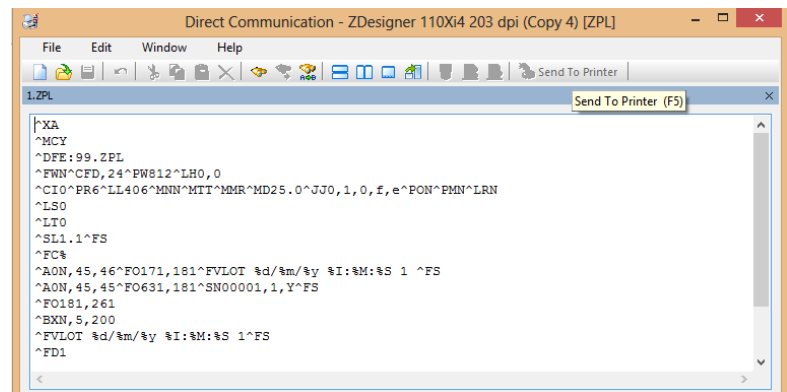
Select **1.ZPL** and click “Open”.



Your screen will have the contents of 1.ZPL on it.

Click “Send To Printer”.

There will be no response from the printer.



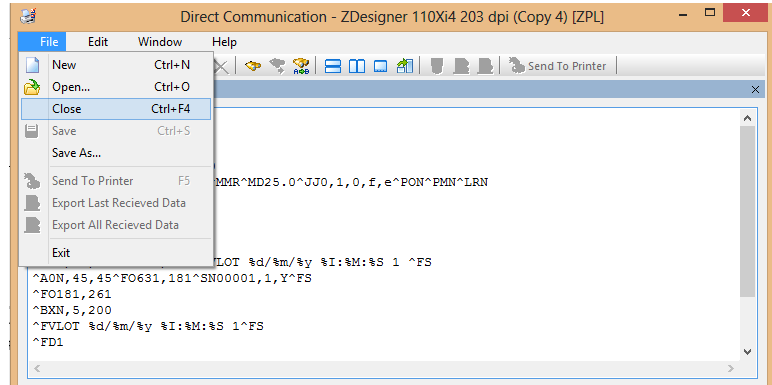


# How To

## Service Documents from APPI

Go to “File – Close”.

Repeat these steps and load 3.ZPL.



On the T-1000, go to “Printer Settings – Stored Labels”.

If this box says “Reprint ON”, or “Overwrite”, press it until it says “Reprint OFF”.

Press the **Green Button** labeled “Label #”.

Type in **1** or **3**. The label will load, and you can start printing.

