



How To

Service Documents from APPI

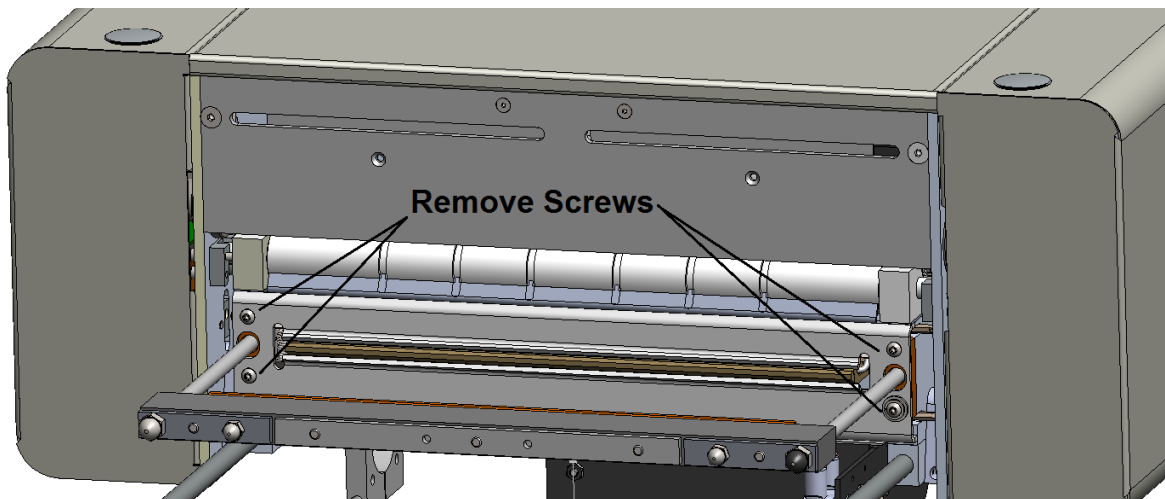
Document: #HT000093

Document Title: Replace PTFE Anti-Stick Sheet

Product(s): T-1000

Procedure:

Remove the 1/4-20 button head screws from **Gripper Plate**. Be careful not to lose the 4 spacers behind **Gripper Plate**.



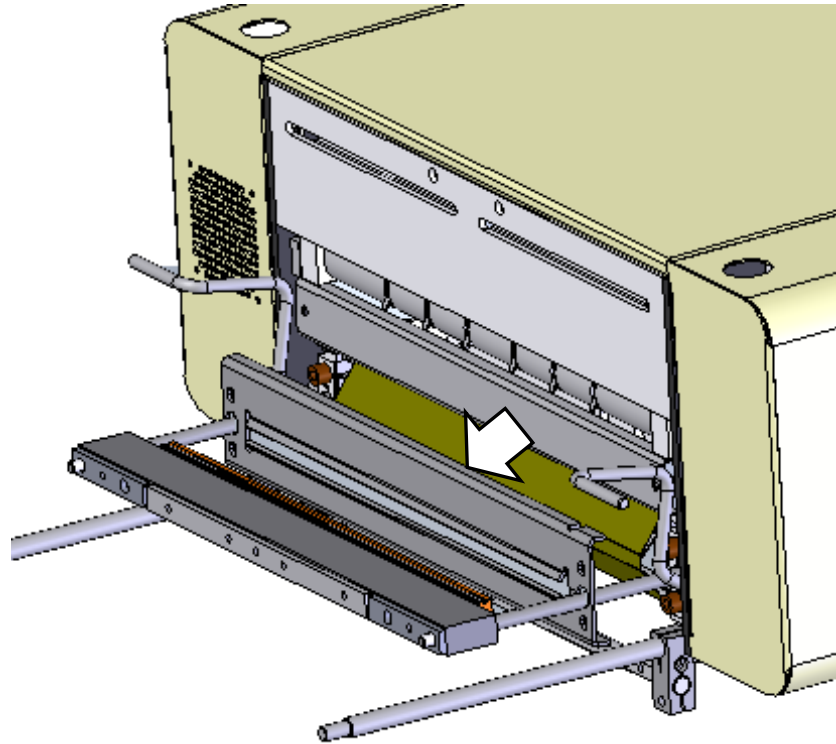
(Above) Gripper Plate Spacer, P/N TP-T1MB00026



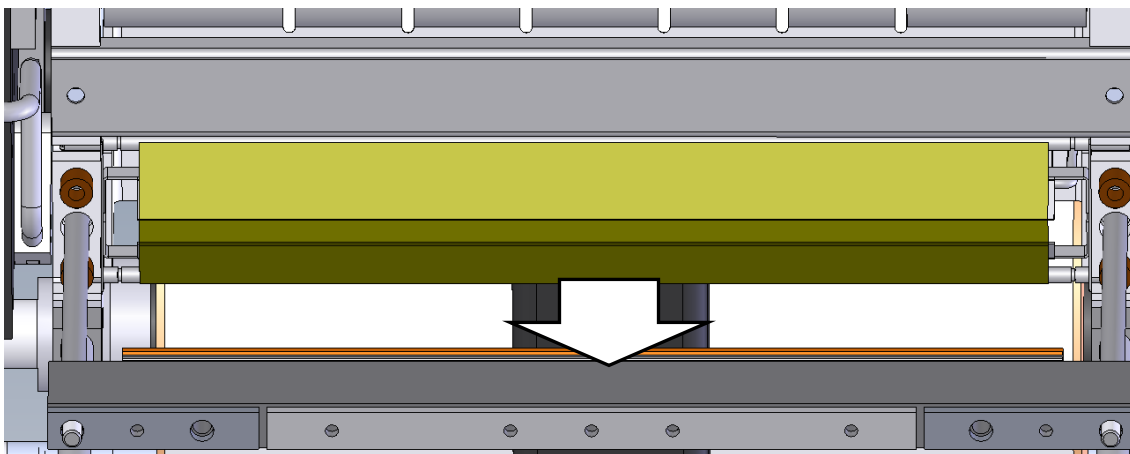
How To

Service Documents from APPI

Slide Gripper Plate out



Remove the PTFE Anti-Stick Guide.





How To

Service Documents from APPI

Remove the two **Springs** (P/N TP-108156), and separate the two shafts. Clean the old adhesive from both shafts.



Lay the shaft on top of the **PTFE Anti-Stick Sheet** and measure from the edge of the sheet to the edge of the shaft. Make sure the sheet is in center of the shaft.





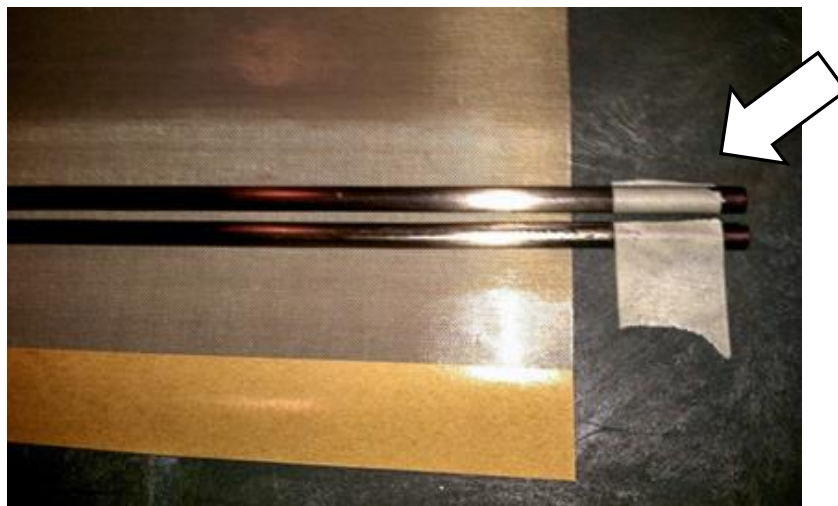
How To

Service Documents from APPI

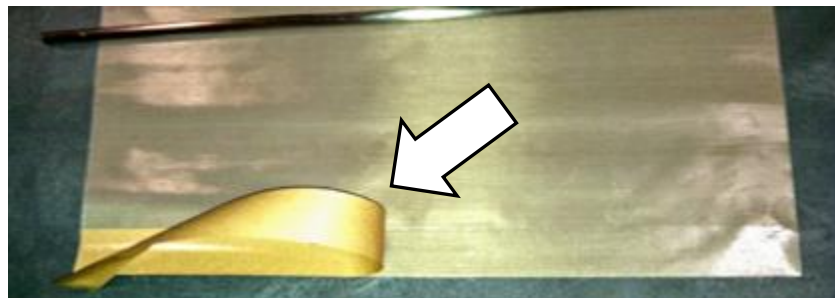
Put a piece of tape on the shaft where the edge of PTFE sheet is.



Place both shafts together and tape the other Shaft. Keep the taped ends on the same side of the PTFE Sheet.



Remove the adhesive backing on one end of PTFE Sheet.





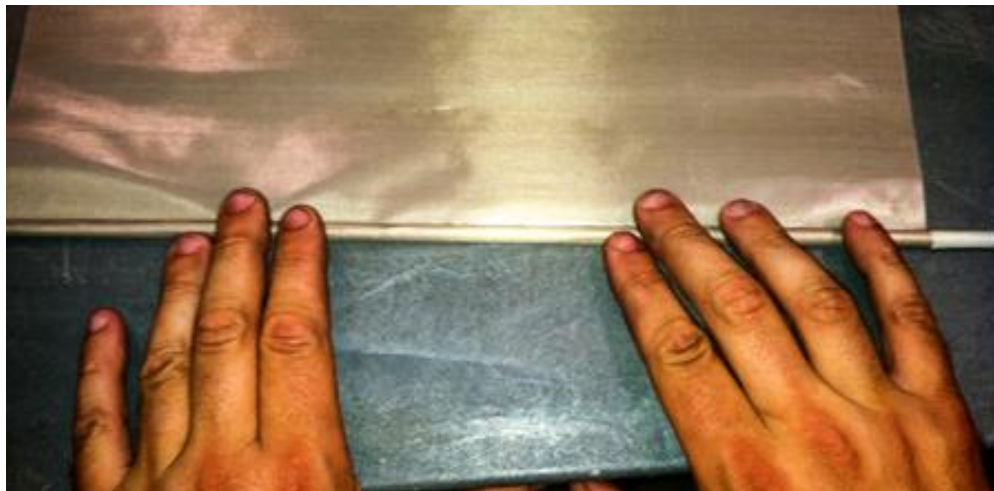
How To

Service Documents from APPI

Parallel the Shaft with the **PTFE Sheet** and the taped end on the edge of the sheet.
Place the shaft down on the sheet.



Roll the shaft until adhesive is gone.

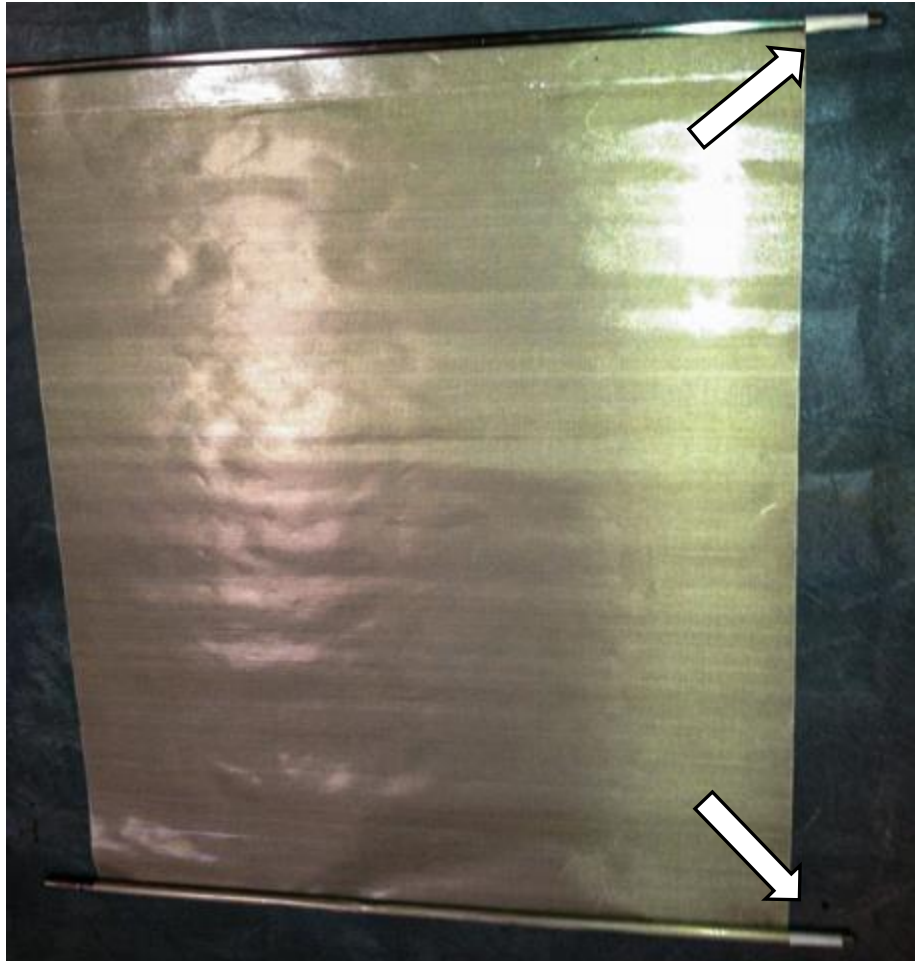




How To

Service Documents from APPI

Repeat with the other Shaft making sure taped ends are on the same side.



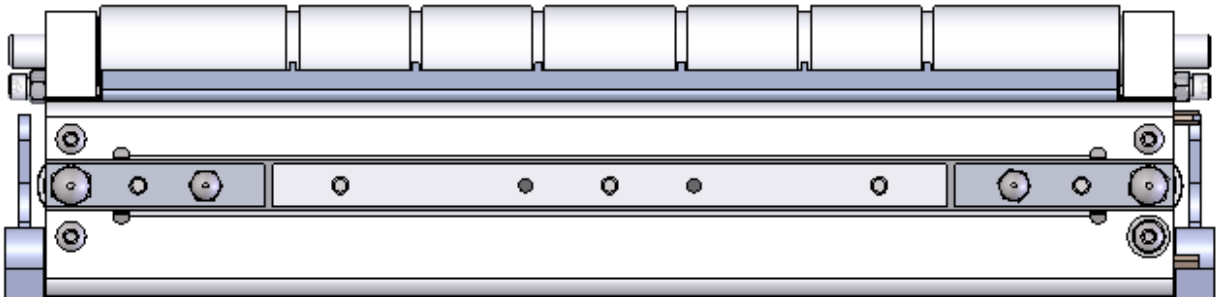
Before proceeding to the next step, it is necessary to determine if the Bagger is a **Standard Frame** or a **Drop Frame** model, as this will determine the way the **PTFE Guide** is re-assembled.



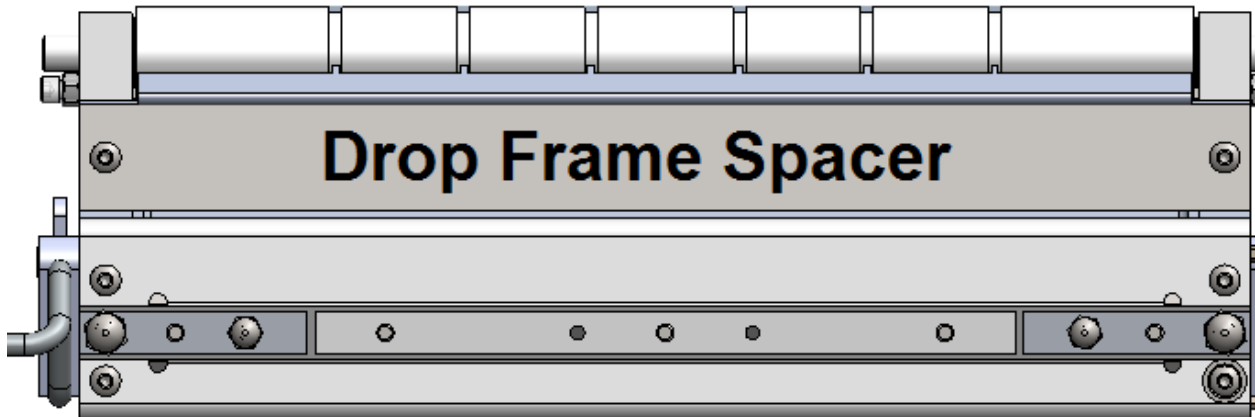
How To

Service Documents from APPI

Standard Frame



Drop Frame



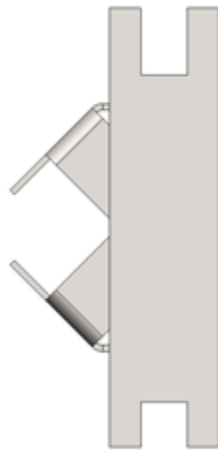


How To

Service Documents from APPI

Look closely at the **PTFE Sheet Bracket**. If you have a **Standard Frame**, the longer slot of the **PTFE Sheet Bracket** is on top. If you have a **Drop Frame**, the shorter slot is on top.

Longer Slot on Top



Standard Frame

Shorter Slot on Top



Drop Frame

Lay the **PTFE Sheet Bracket** in the middle of the **PTFE Sheet**.

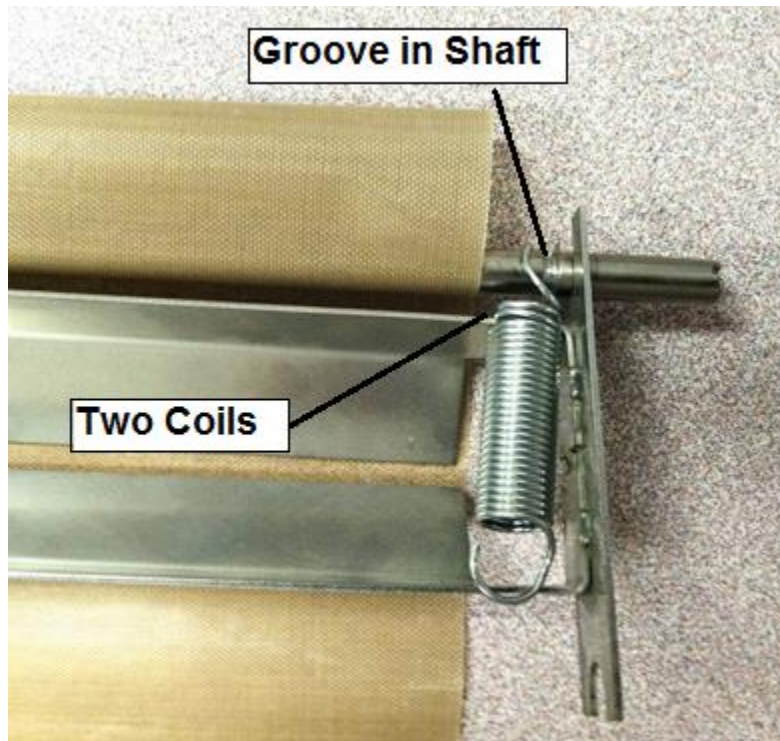




How To

Service Documents from APPI

Place the shaft into the cut outs of the bracket. Then pull the spring in so that you have two coils between the Bracket and Shaft. Be sure the spring is in the groove on the shaft.



Repeat the same procedure on the other shaft. The finished assembly should appear as below.





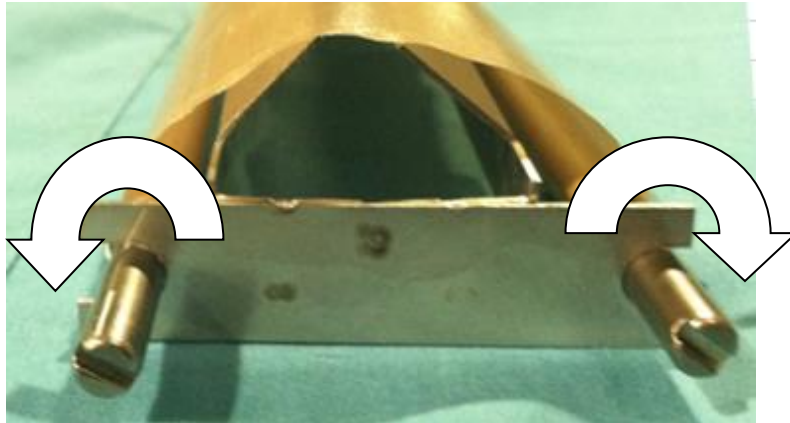
How To

Service Documents from APPI

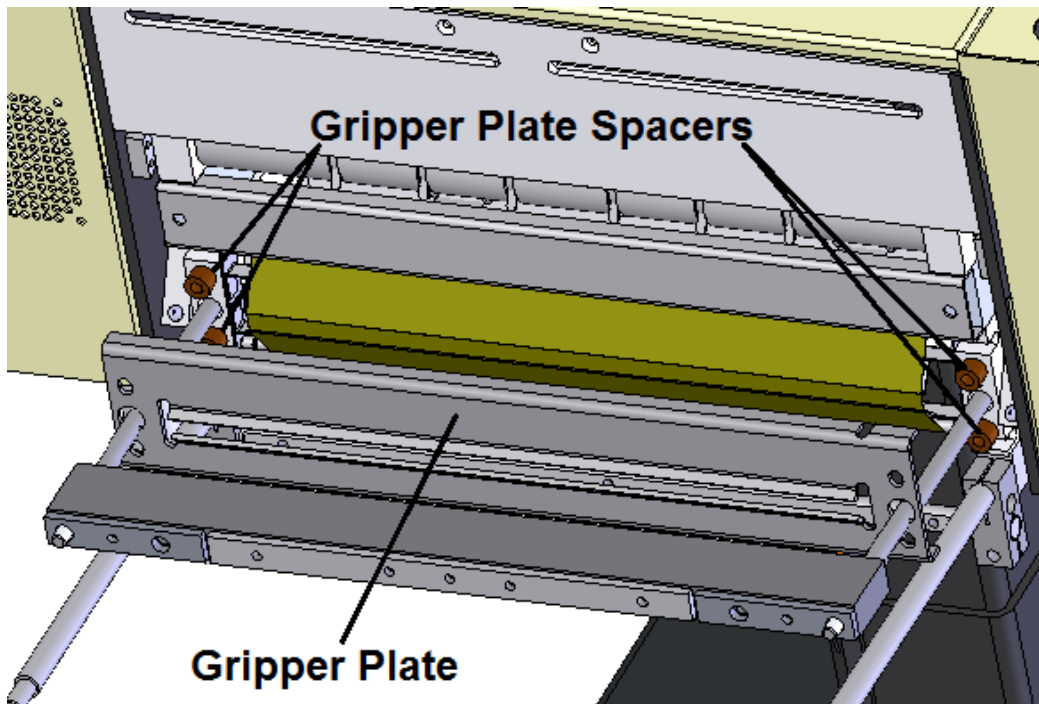
Depending on if you have a **Standard Frame** or a **Drop Frame** wind up the supply of PTFE Sheet so it will be on the top of PTFE Sheet Bracket.

Remember! Standard Frame, Longer Slot to the top

Drop Frame, Shorter Slot to the top



Slide the **Gripper Plate** back into position, with **Gripper Plate Spacers** in place.





How To

Service Documents from APPI

Insert and Button Head Screws then tighten.

