



How To

Service Documents from APPI

Document: #HT000166

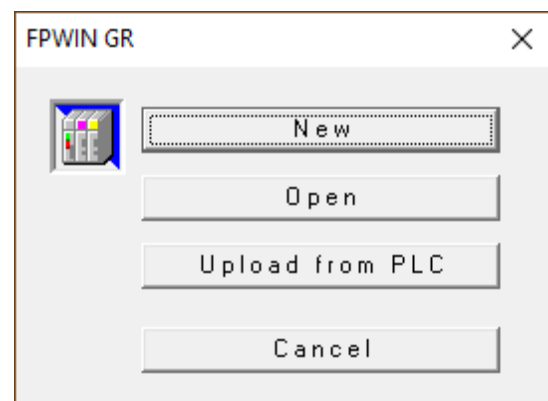
Document Title: Reprogram PLC for T-1000 and Printer and Set PC Link

Product(s): T-1000

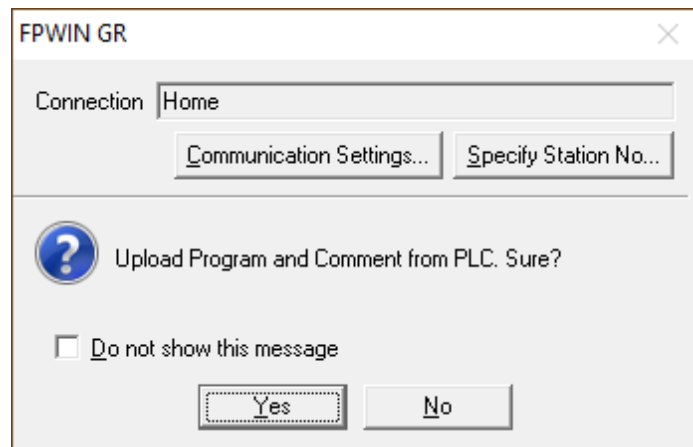
Procedure:

Start FPWIN.

When this window appears, click **UPLOAD** from **PLC**.



Click **Communication Settings** to check your connection speed, etc.





How To

Service Documents from APPI

The settings should look like this.
Speed can vary.

Click **OK**.

Communication Setting - Untitle1

Network type: C-NET(RS232C,USB) [OK]

COM port: COM3 [Cancel]

Baud rate: 57600 bps [Initialize]

Data length
 7 bits 8 bits [Help]

Stop bit
 1 bit 2 bits

Parity
 Non Odd Even 0

Time-out: 5 sec

Parameter for automatic setting
 Baud rate
 Data Length
 Parity

Click **Yes**.

FPWIN GR

PLC is disabled to write/read. Cancel the password Settings. Sure?

Yes No



How To

Service Documents from APPI

Click the entry field **Enter in Alphanumeric**:

Type in the password.

The password is always **APPI07**

Hit **Enter**.

Set PLC Password - Untitled1

PLC : Home

Current status : 8 digits Protect

Available retry count : 3 counts

digit number

- 4 digits(Hex.)
- 8 digits(alphanumeric, Match case)

Operation Mode

- Access
- Protect
- Unprotect

8 digits password

Enter in alphanumeric: *****

Setting for FP memory loader option

- Allow the download to older than Version 2.5
- Allow the download in case of same password
- Set that PLC cannot be uploaded

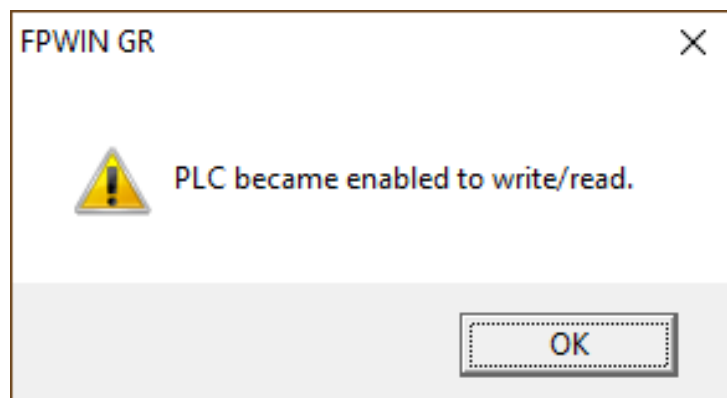
Settings

Close

Force Cancel

Help

Click **OK**.





How To

Service Documents from APPI

Click **Unprotect**.

Click **Enter** in **Alphanumeric**.

The password is still in there,
you don't need to type anything.

Hit **Enter**.

Set PLC Password - Untitle1

PLC : Home

Current status : 8 digits Available to access

Available retry count : 3 counts

digit number

- 4 digits(Hex.)
- 8 digits(alphanumeric, Match case)

Operation Mode

- Access
- Protect
- Unprotect

8 digits password

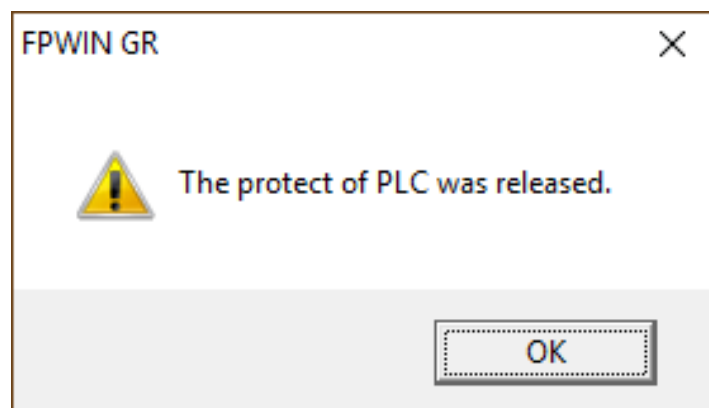
Enter in alphanumeric: xxxxxxx

Setting for FP memory loader option

- Allow the download to older than Version 2.5
- Allow the download in case of same password
- Set that PLC cannot be uploaded

Buttons: Settings, Close, Force Cancel, Help

Click **OK**.





How To

Service Documents from APPI

Click **Close**.

Set PLC Password - Untitled1

PLC : Home

Current status : Password is not set

Available retry count : 3 counts

digit number

4 digits(Hex.)

8 digits(alphanumeric, Match case)

Operation Mode

Access

Protect

Unprotect

8 digits password

Enter in alphanumeric: xxxxxxx

Setting for FP memory loader option

Allow the download to older than Version 2.5

Allow the download in case of same password

Set that PLC cannot be uploaded

Settings

Close

Force Cancel

Help

You will see these screens.

Upload Program

Upload the program from PLC...

Please wait for a while.

Cancel

Read General Purpose Memory

Reading general purpose memory...

Please wait for a while.

Cancel

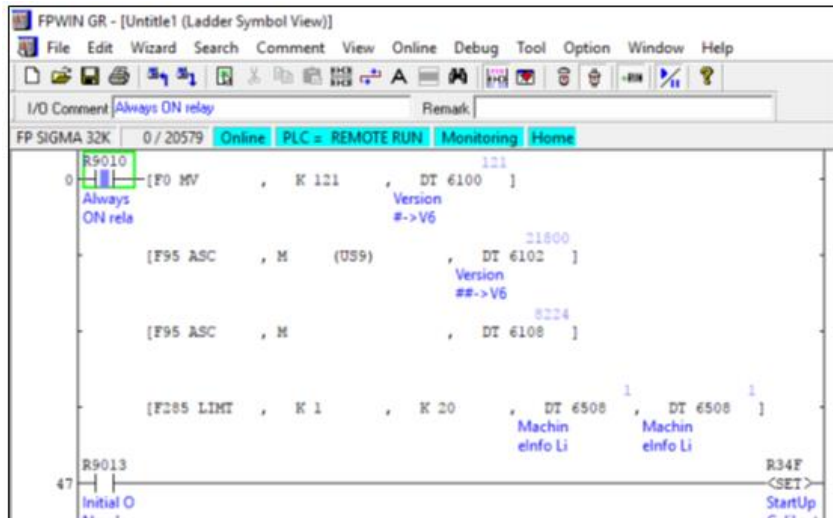
How To

Service Documents from APPI

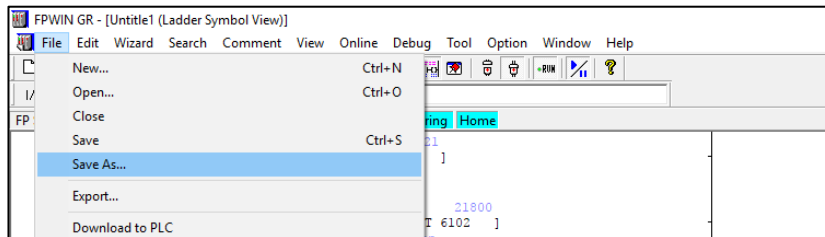
The program has been loaded.

Note the K 121 in the program area. This is the version for this program.

Yours will look different from this.



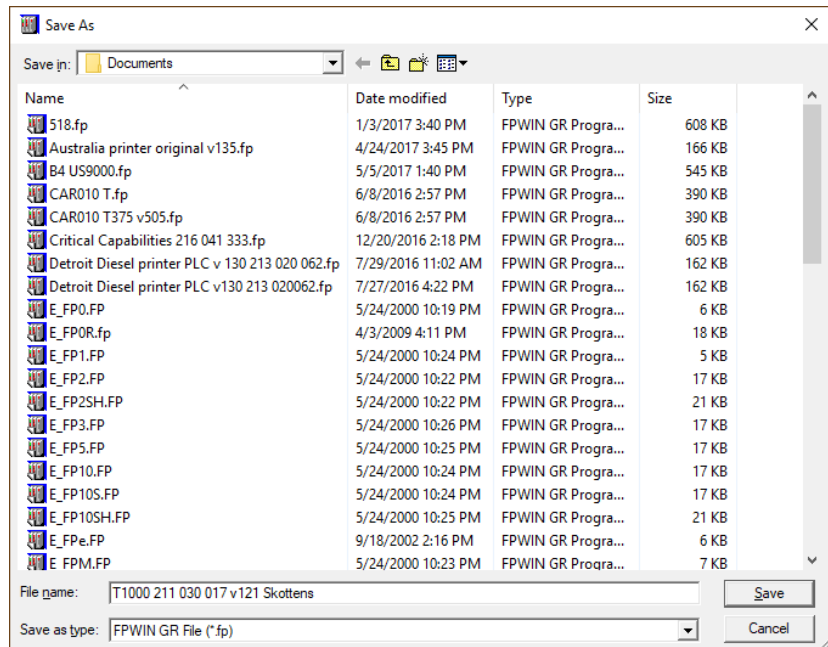
Click **File – Save As**.



This step **MUST** be done. You **MUST** save the file.

The file name can be anything you can easily recognize. (This is just a suggestion).

Click **Save**.





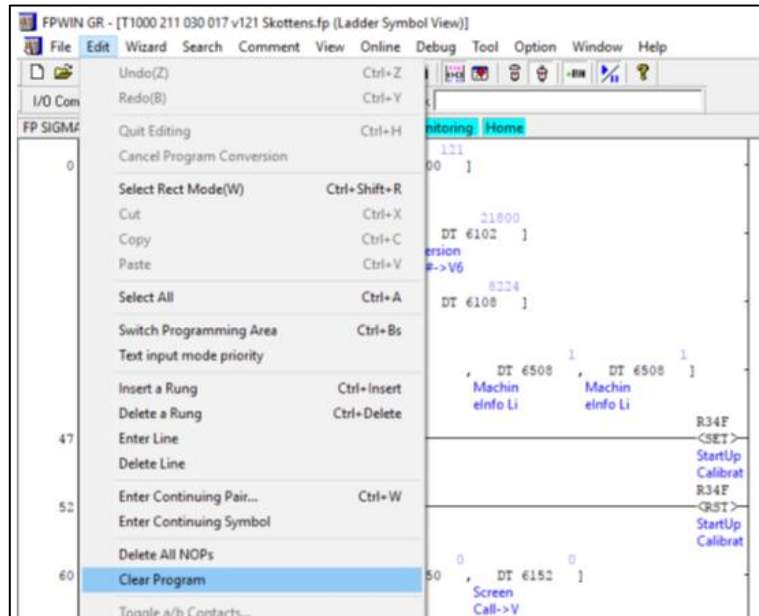
How To

Service Documents from APPI

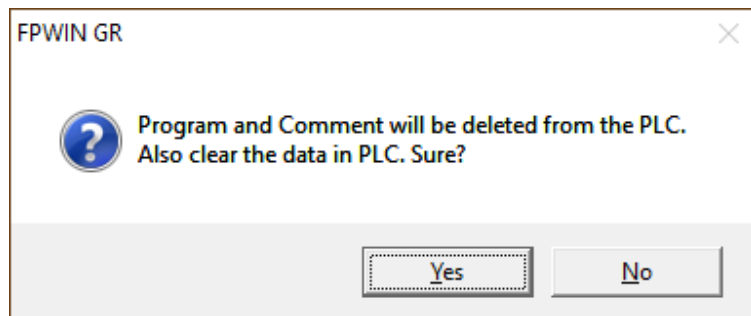
Once the file is saved, you can clear the PLC.

Note: this can't be undone!

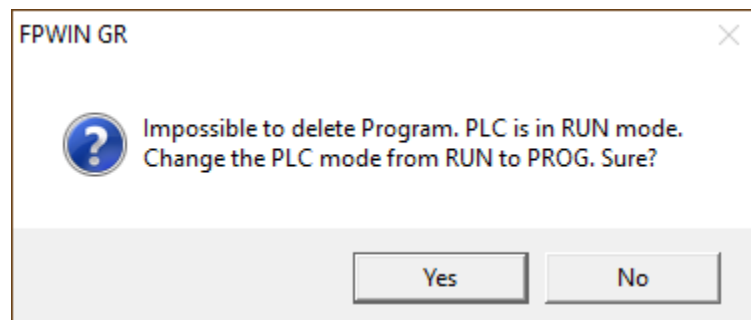
Go to **Edit – Clear Program**.



Click **Yes**



Click **Yes**

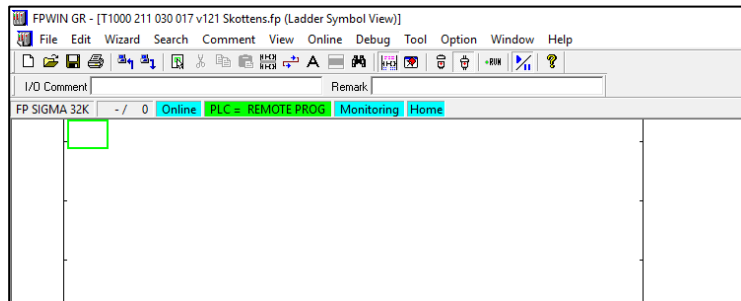




How To

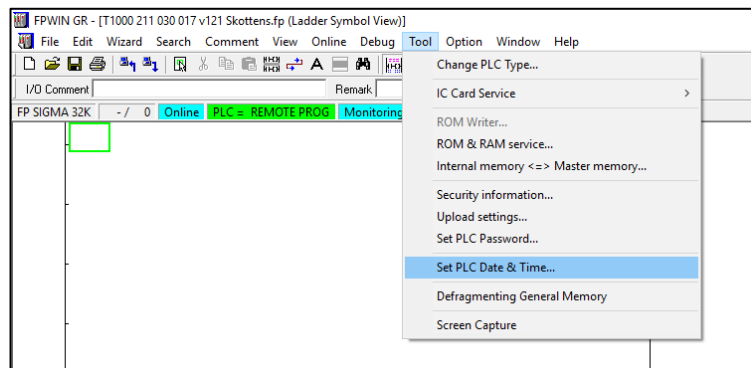
Service Documents from APPI

Once it is done clearing, your screen will be blank.

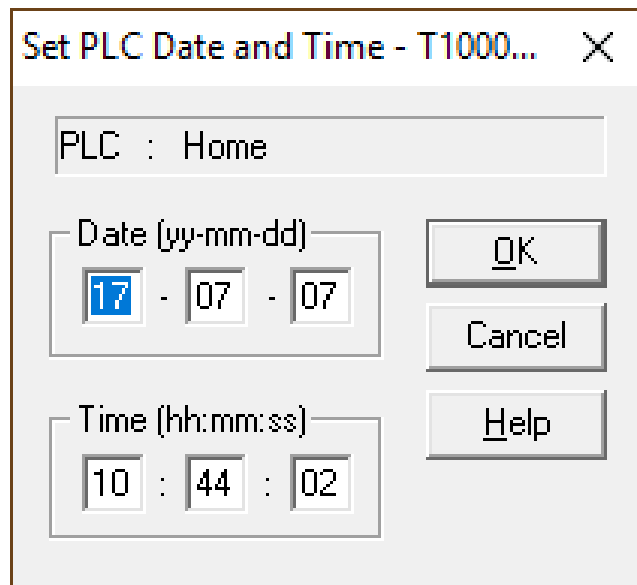


Most likely, the PLC clock will be off.

Go to *Tool – Set PLC Date & Time*.



Type in the right date and time.
Click **OK**.

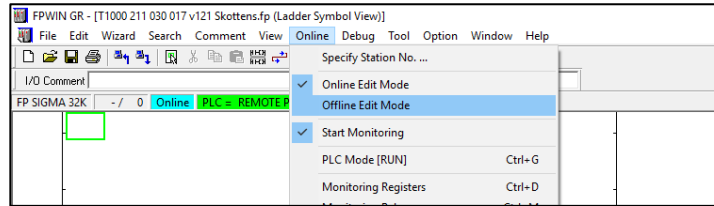


How To

Service Documents from APPI

We will close the connection to the now empty PLC.

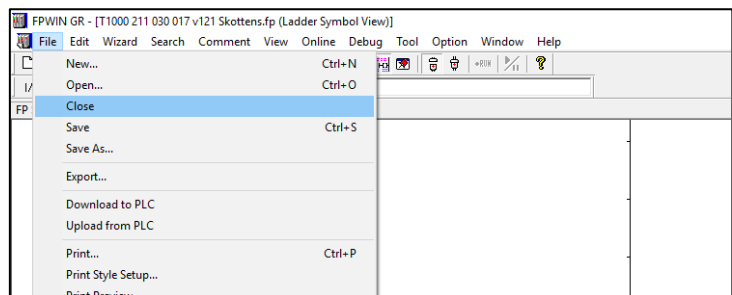
Go to **Online – Offline Edit Mode**.



We will close this empty program.

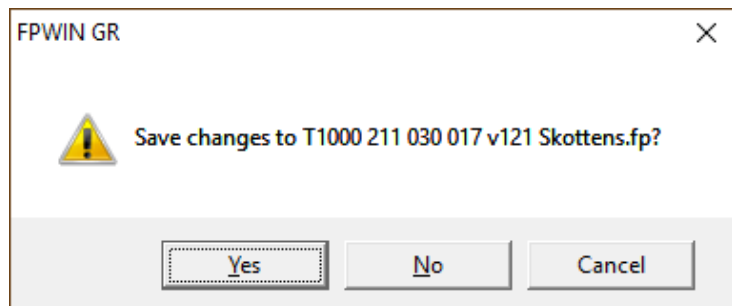
DO NOT SAVE THIS AT THIS POINT.

Go to **File – Close**.



Click **No** so the changes will NOT be saved.

DO NOT SAVE AT THIS POINT!



You now have an empty FPWIN program.





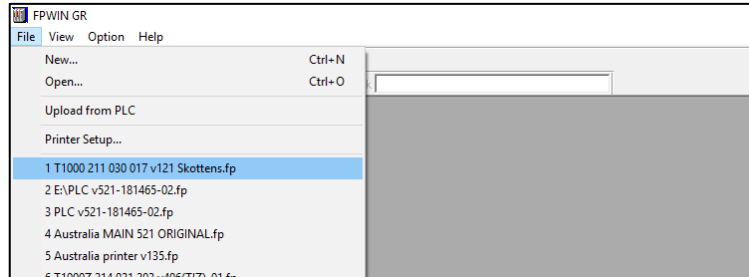
How To

Service Documents from APPI

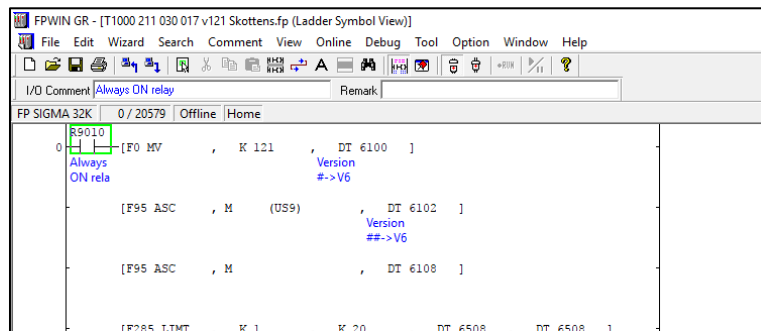
Click **File**.

The program we saved earlier will be on top of this list.

Click the program you just saved.

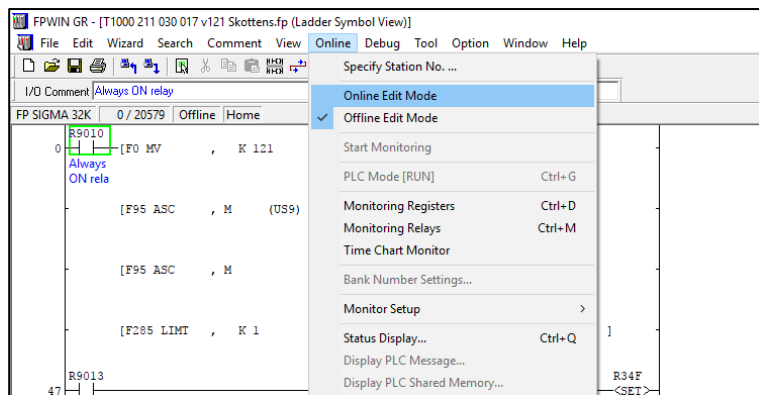


The program is back up.

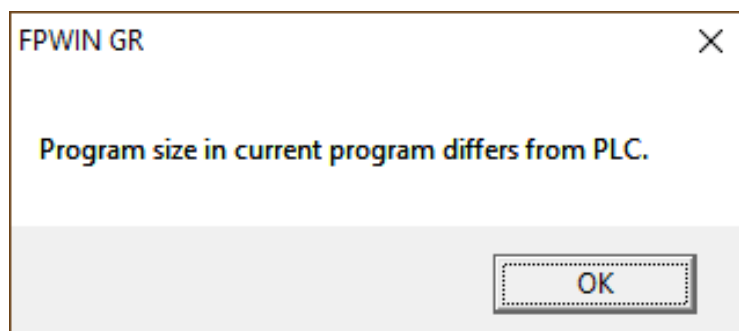


Now we will reconnect to the PLC.

Click **Online – Online Edit Mode**.



This is normal. Click **OK**.



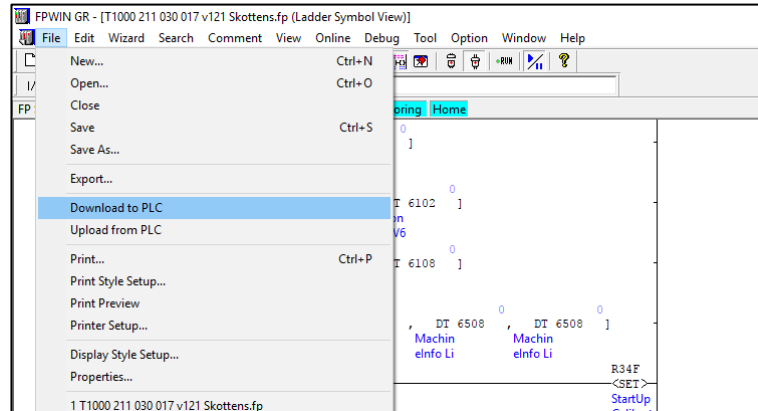


How To

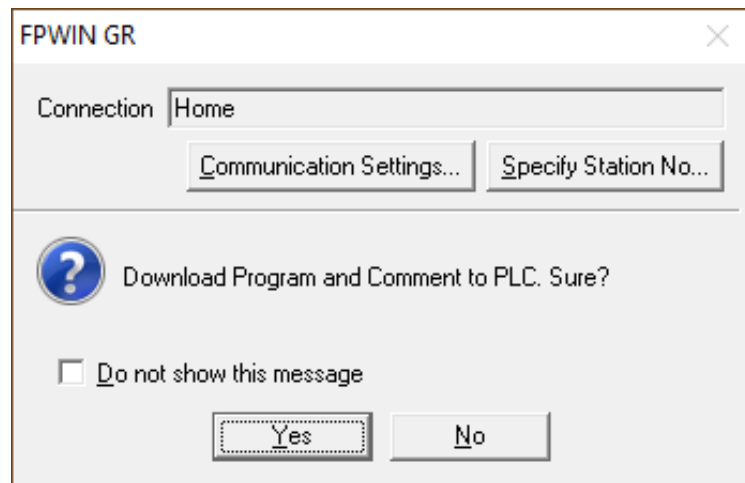
Service Documents from APPI

We can download to the PLC now.

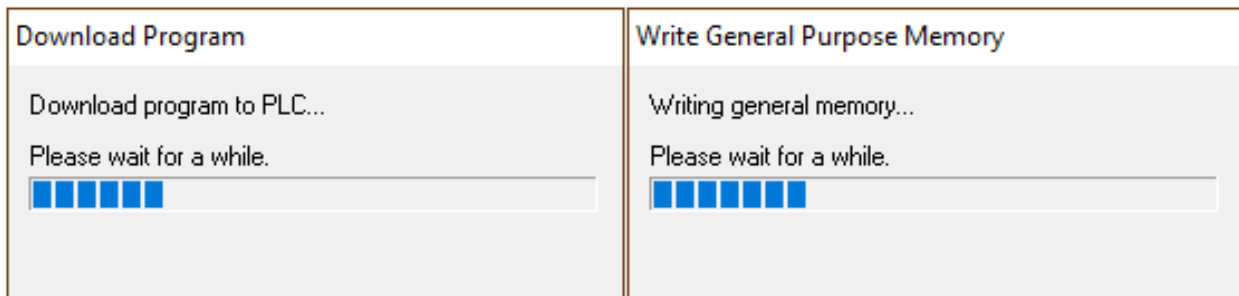
Click **File – Download to PLC**.



Click **Yes**.



You will see these while downloading....

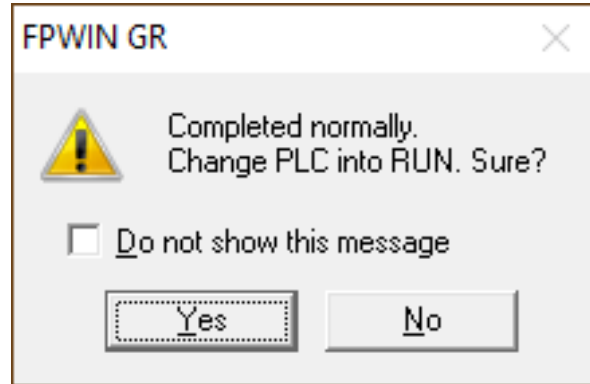




How To

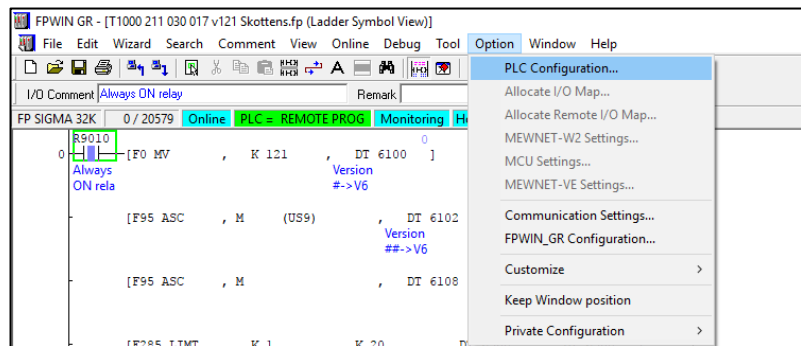
Service Documents from APPI

Click **No**.



We must set the PLCs so they will open the PC Link between them.

Click **Options – PLC Configuration**.

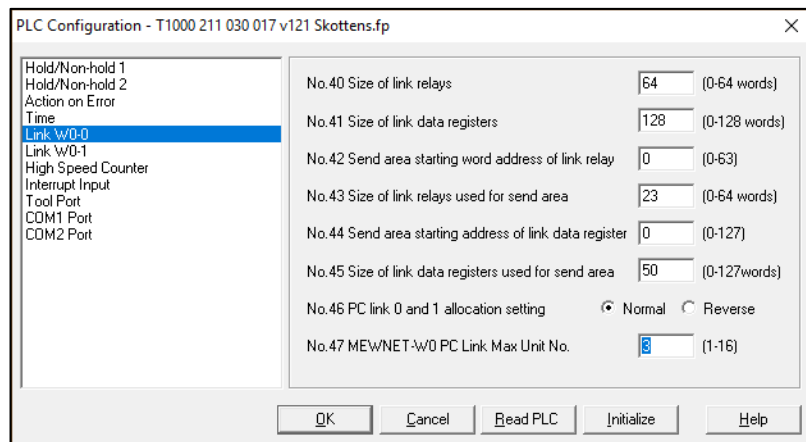


In this window, click **Link W0-0**.

Set **No. 47 MEWNET-W0 PC Link Max Unit No.** to 3.

Even if it shows 3 to begin with, write in 3.

Click **OK**.

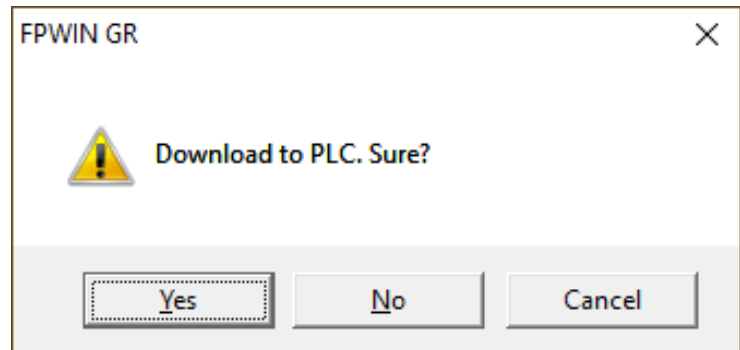




How To

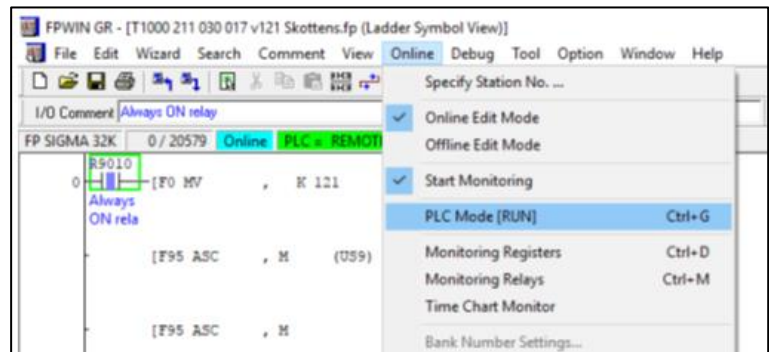
Service Documents from APPI

Click **Yes**

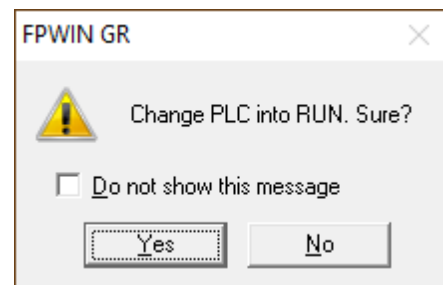


Now we can set it to **RUN**.

Go to **Online – PLC Mode**.



Click **Yes**.



This procedure is complete.

Click **Online – Offline Edit Mode**.

Device is disconnected.

Close **FPWIN**. Disconnect cables from the PLC.

