



# How To

## Service Documents from APPI

**Document: #HT000117**

**Document Title: Label Setup for Advanced Poly Printers**

**Product(s): Ti-1000 Printer**

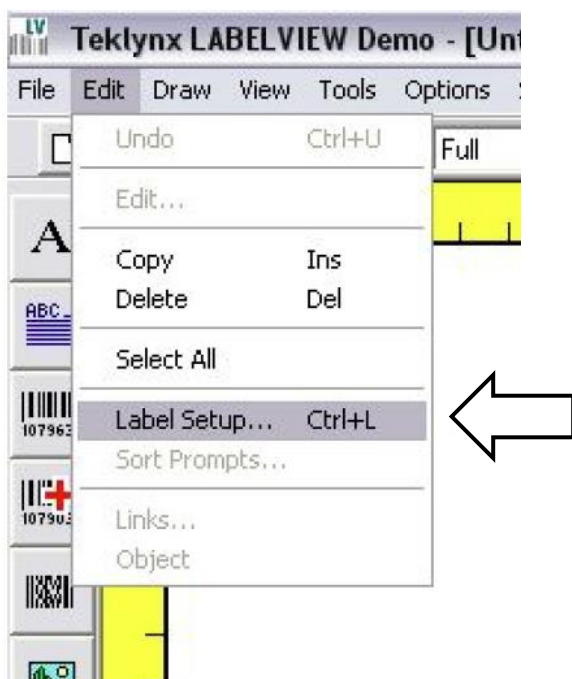
### Procedure:

Follow this procedure to properly configure for label printing for the Ti-1000 203 DPI:

Select Printer: File then Select Printer:



Open LabelView and enter Label Setup (CTRL + L):

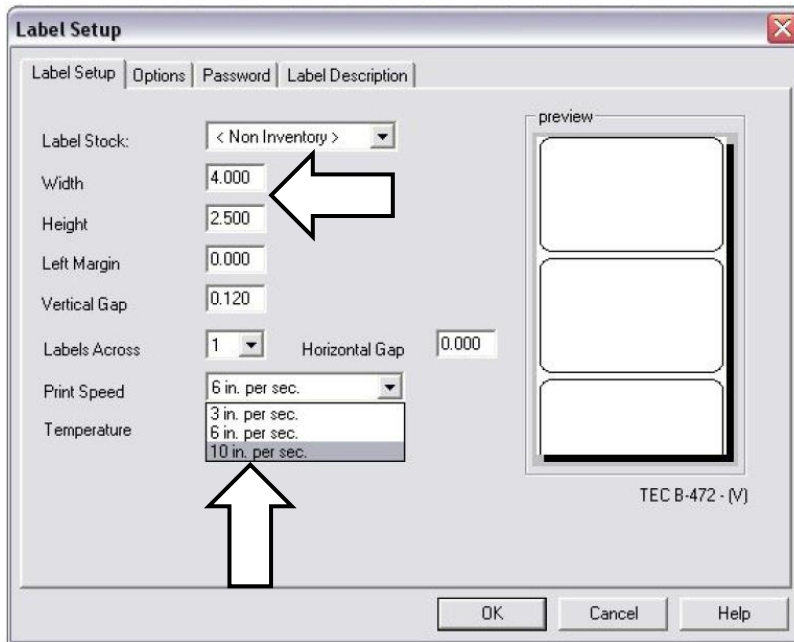


# How To

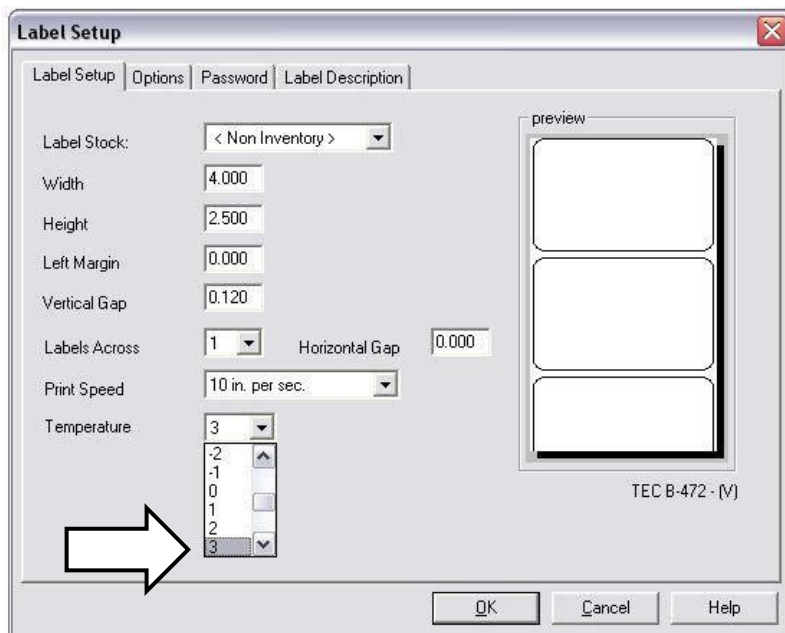
## Service Documents from APPI

Change the print speed accordingly: 10 in/sec for the best performance.

Adjust the label height and width accordingly.



Set Temperature to "3".

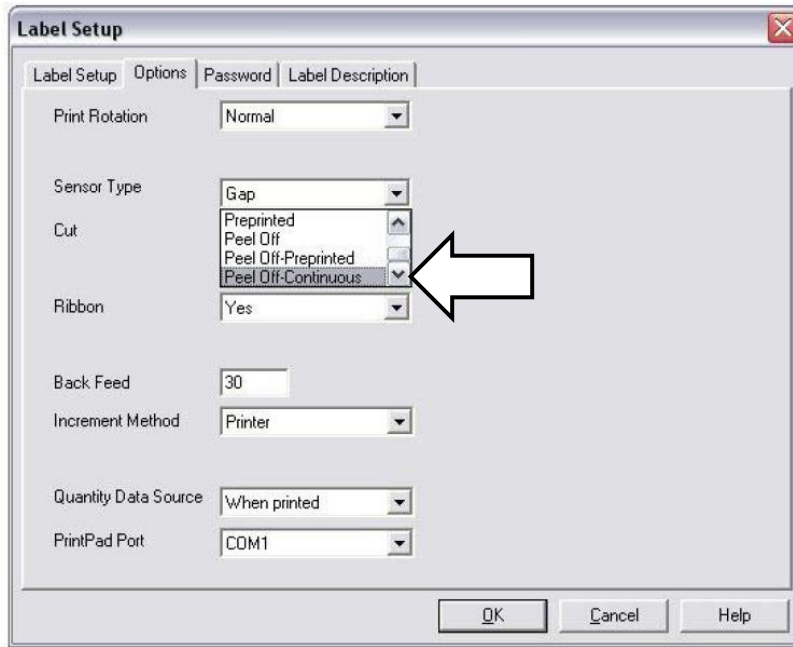




# How To

## Service Documents from APPI

Click the “Options” tab, and set Sensor Type to “Peel Off-Continuous”.



Click “OK” to exit and save changes.

The label format is now correct for TEC printers.