



# How To

## Service Documents from APPI

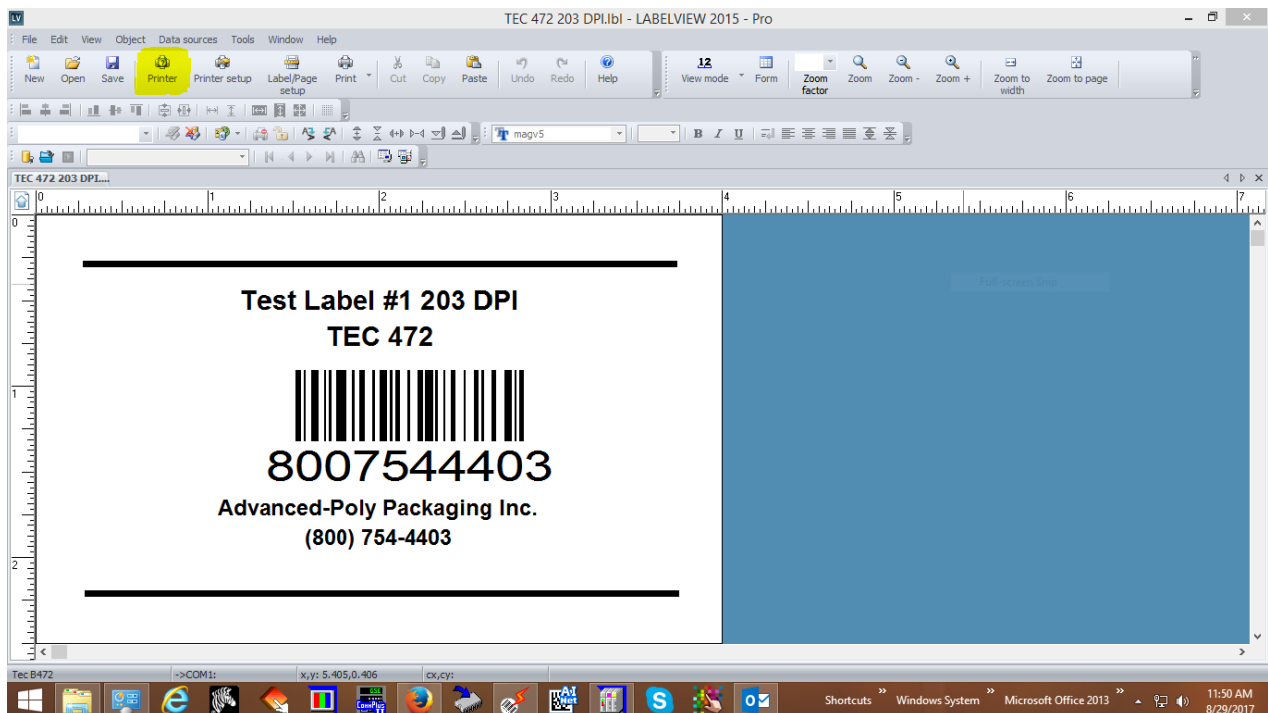
**Document: #HT000085**

**Document Title: Add a TEC Printer to LabelView**

**Product(s): Ti-1000**

**Procedure:**

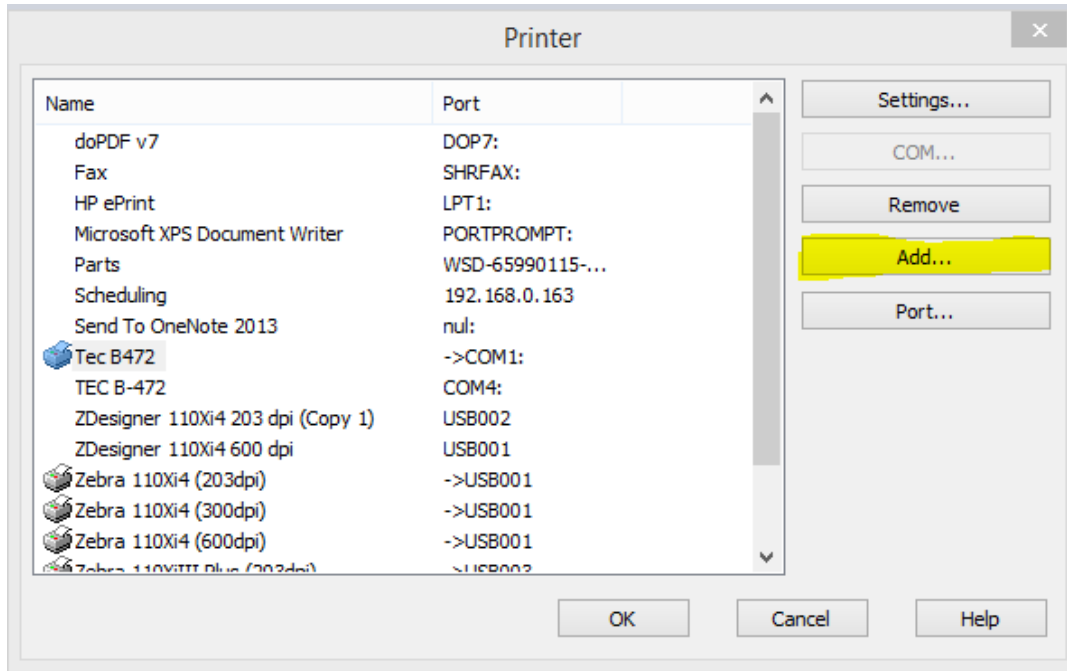
Begin the procedure by clicking on the “Printer” Button.



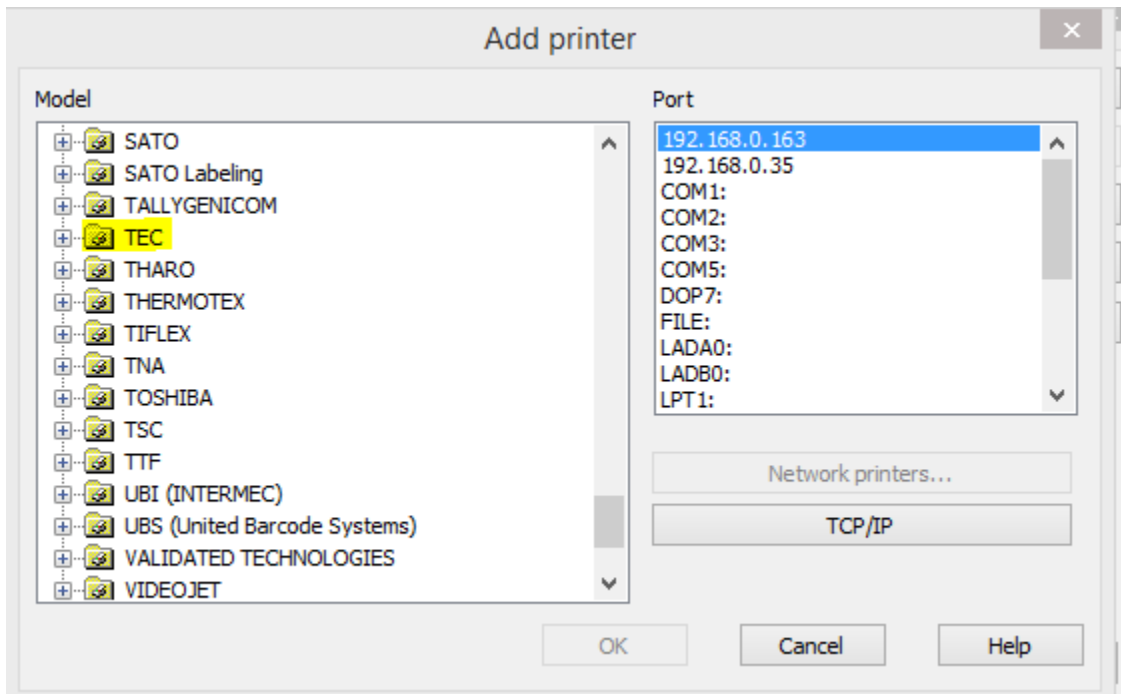
# How To

## Service Documents from APPI

The Printer Dialog Box will be displayed. Click on **“Add”** Button.



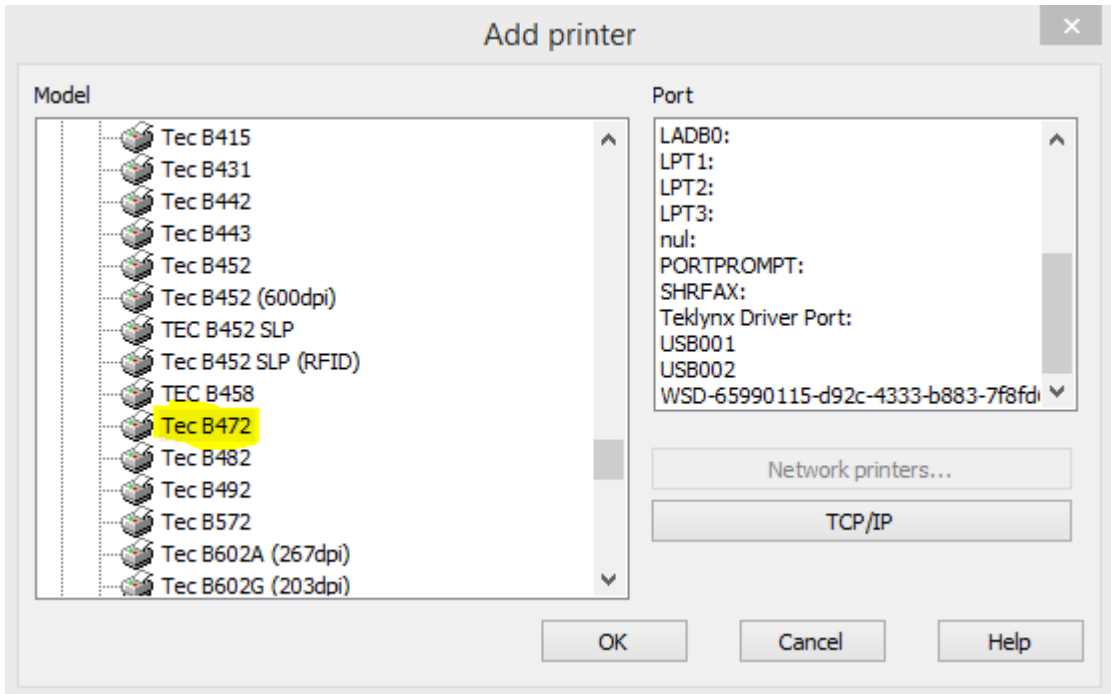
Scroll down Printer Model and click on the **“TEC”** folder.



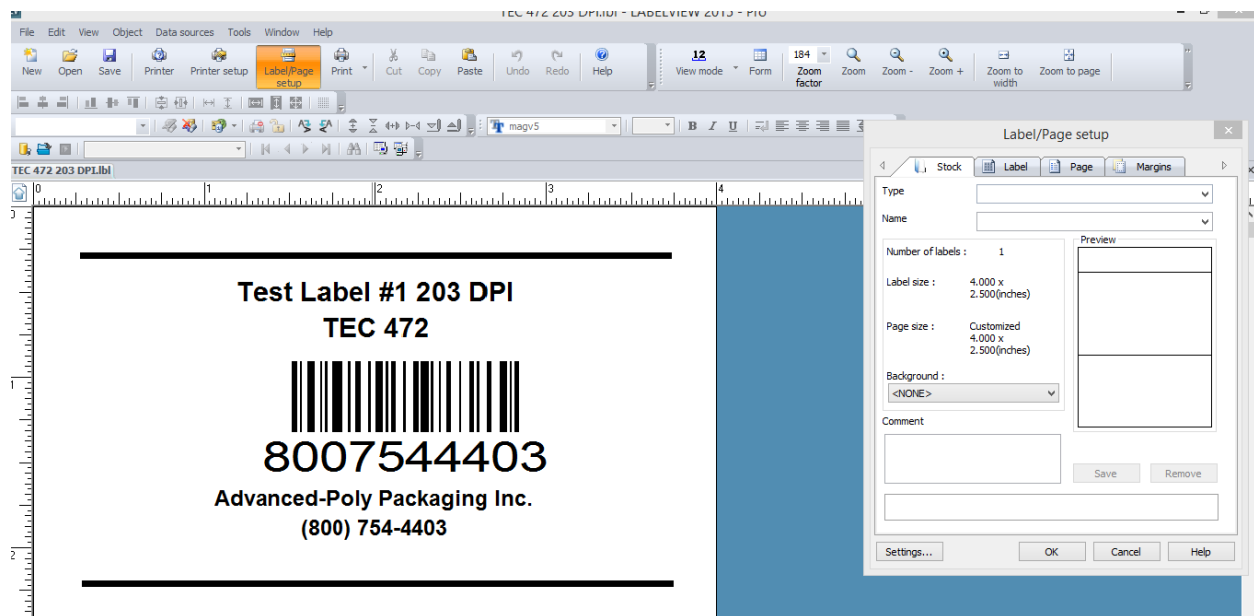
# How To

## Service Documents from APPI

Select “TEC B-472”. Under Port Select the Port that is to be assigned to the TEC B-472 Print Driver. Click “OK”.



When creating a new label or when checking existing label settings, click “Label Set-Up” Button.

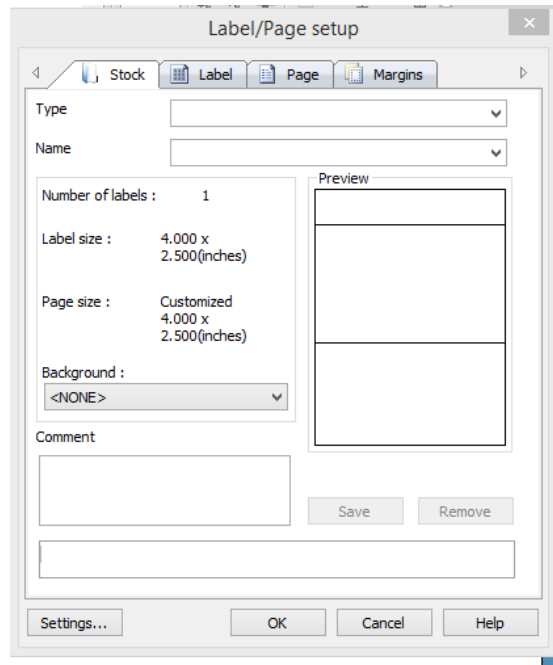




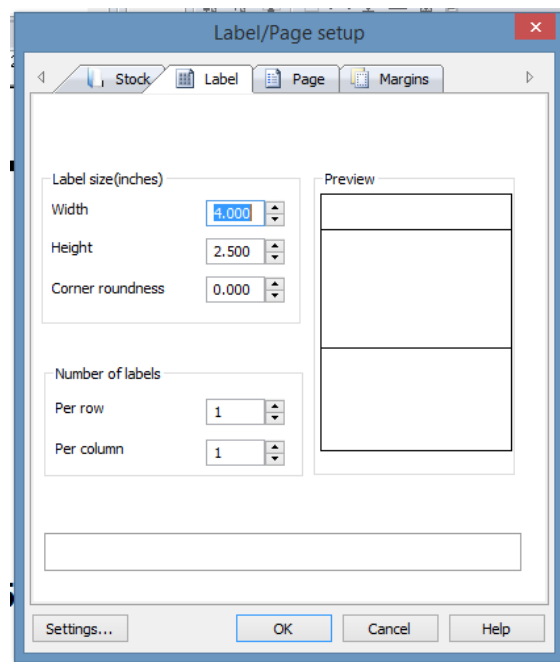
# How To

## Service Documents from APPI

Adjust the setting as displayed. Width should equal Print Head Width. Height is determined by label length.



*Note: 1/4" to 3/8" of white space is required above first line of text and below last line of text.*



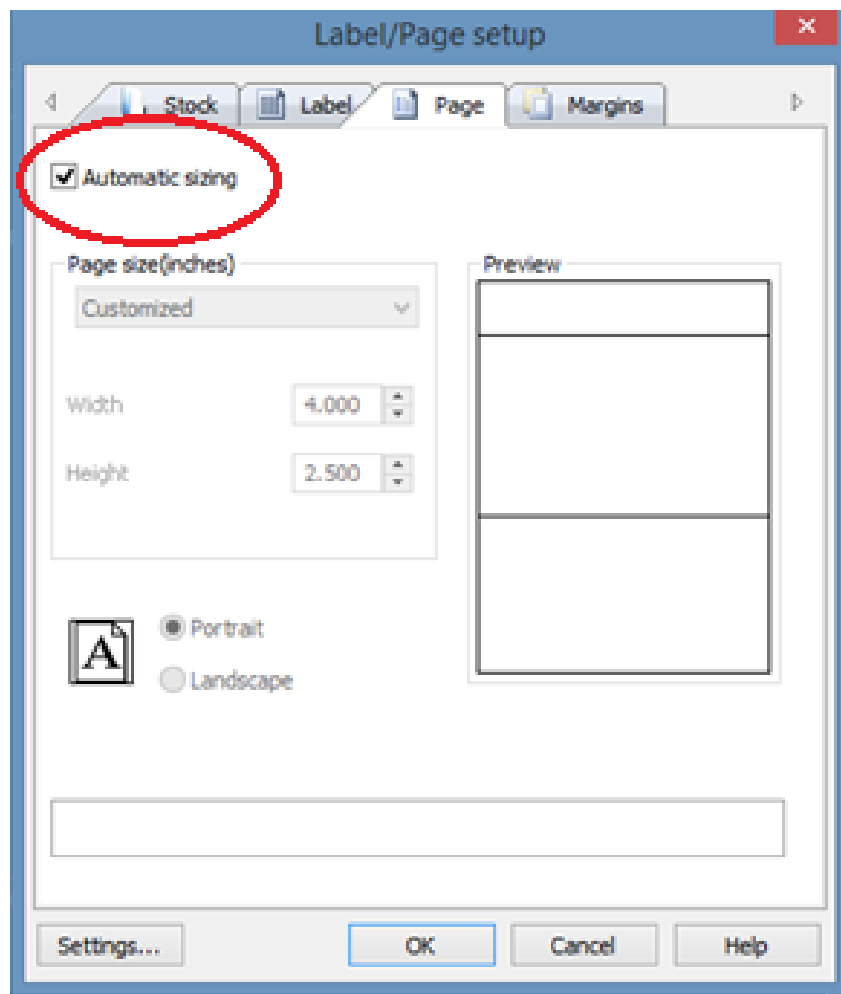


# How To

## Service Documents from APPI

Check “Automatic Sizing” box.

*Note: Page size needs to equal label size.*



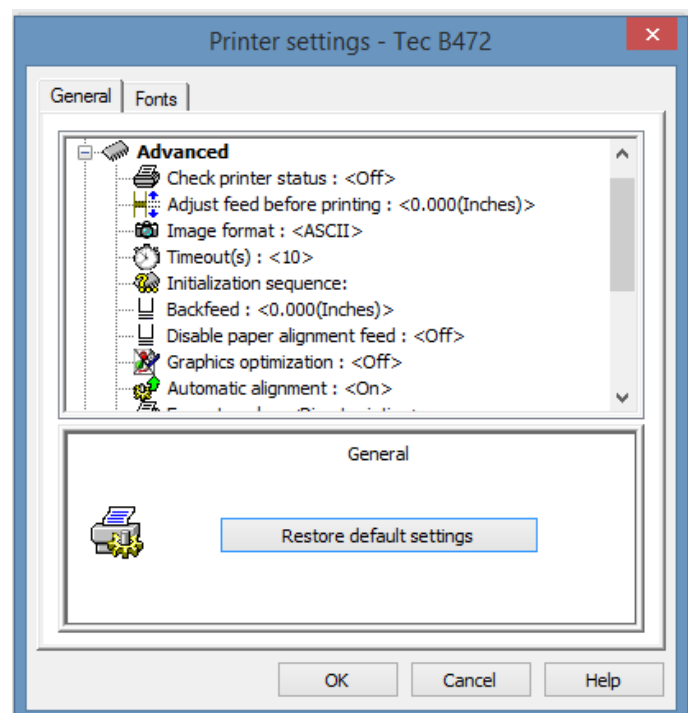
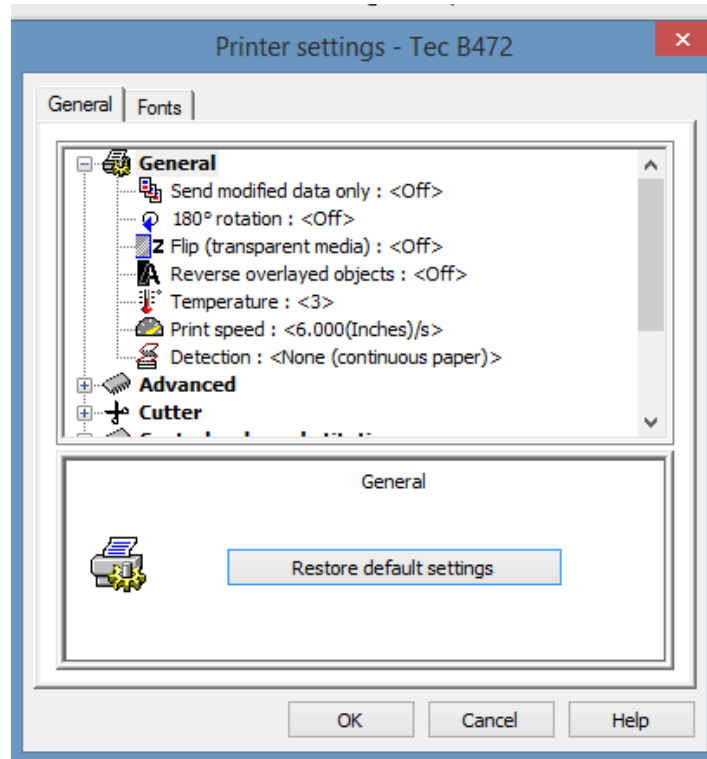
Click on “Settings” Button.



# How To

## Service Documents from APPI

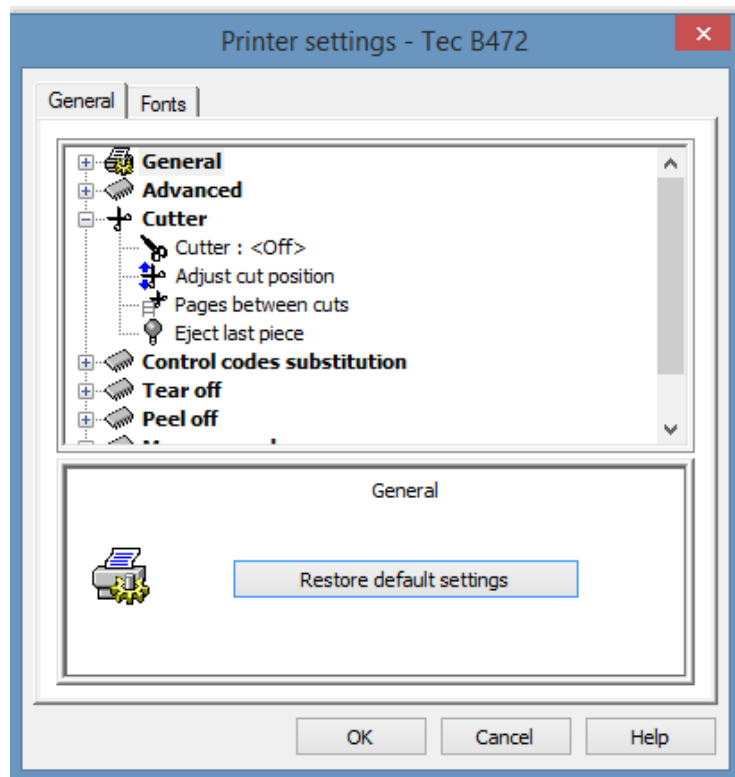
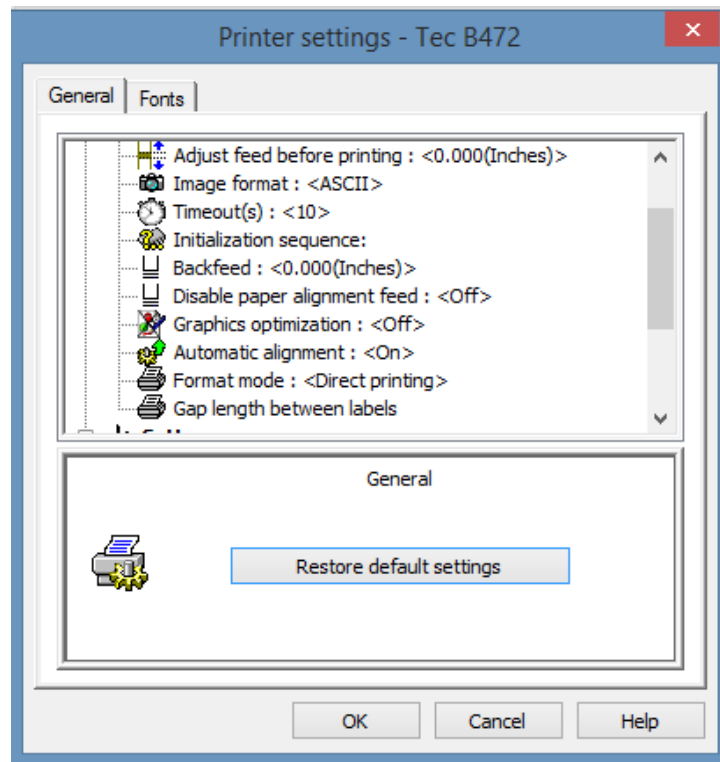
Adjust Settings as displayed by clicking on selection and making adjustments.





# How To

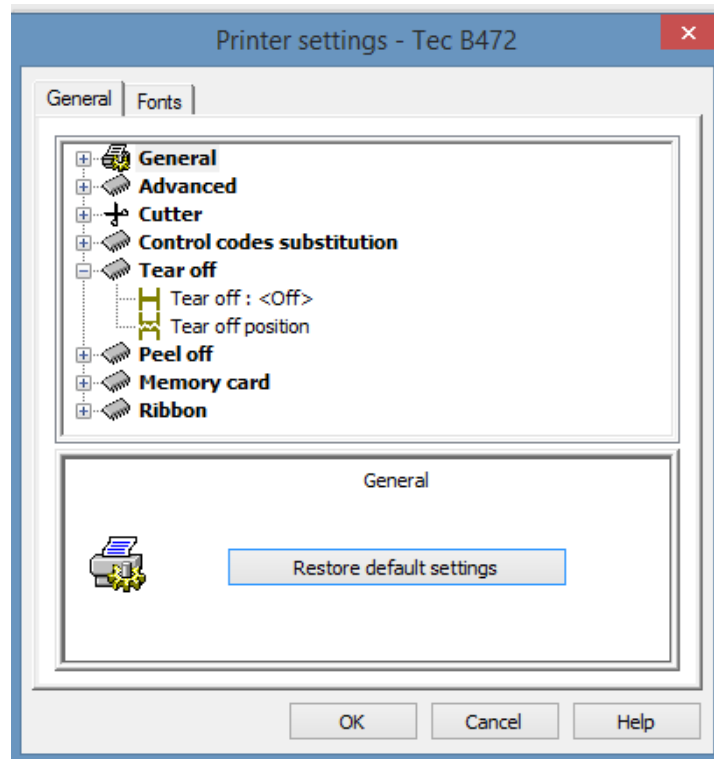
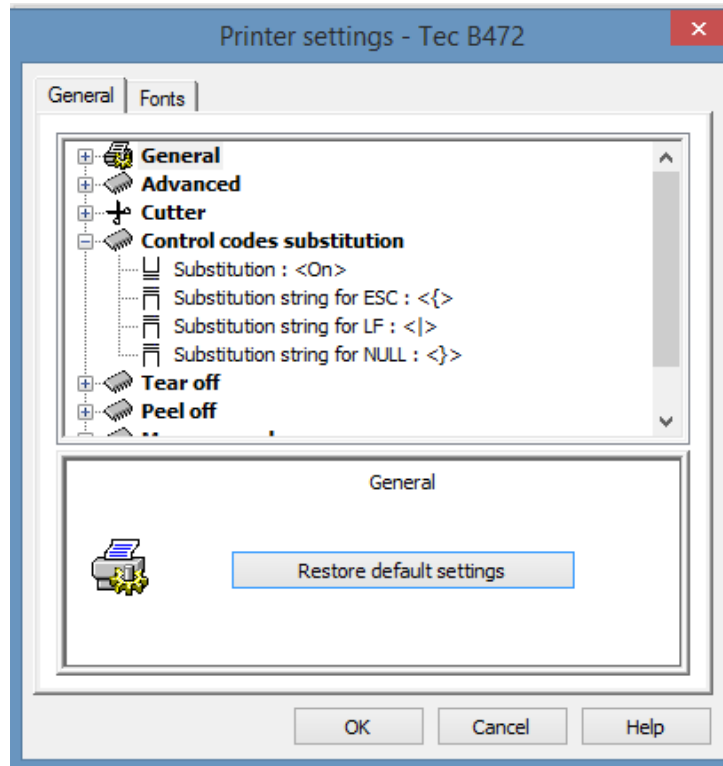
## Service Documents from APPI





# How To

## Service Documents from APPI

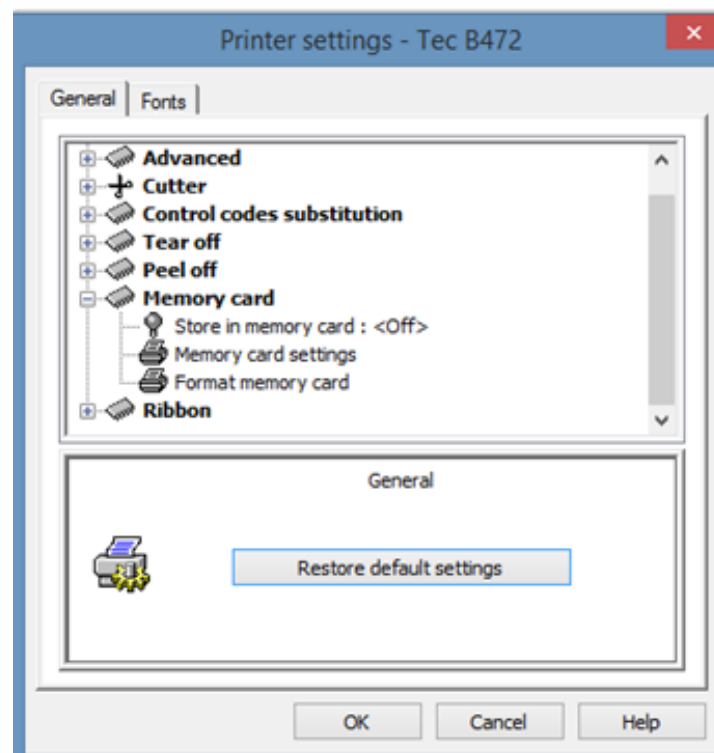
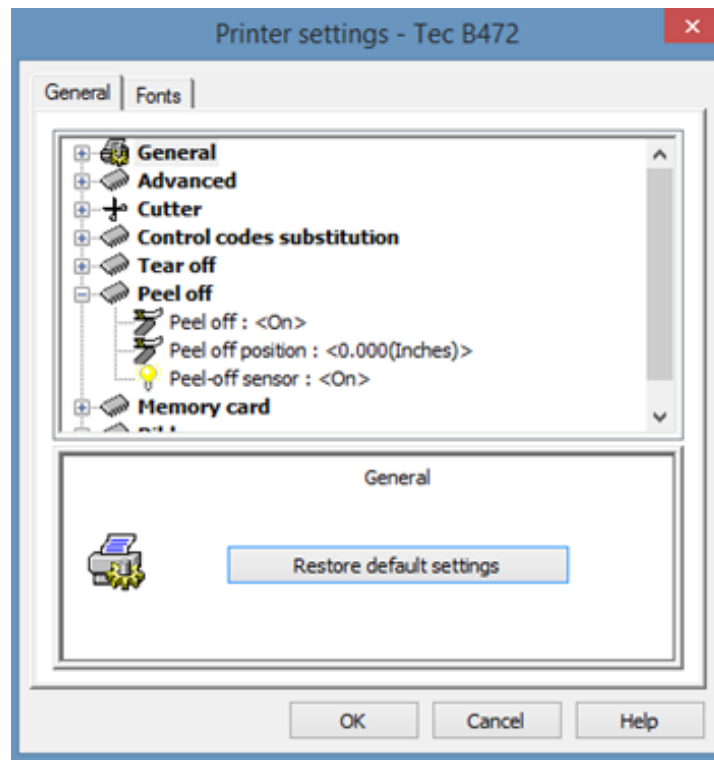






# How To

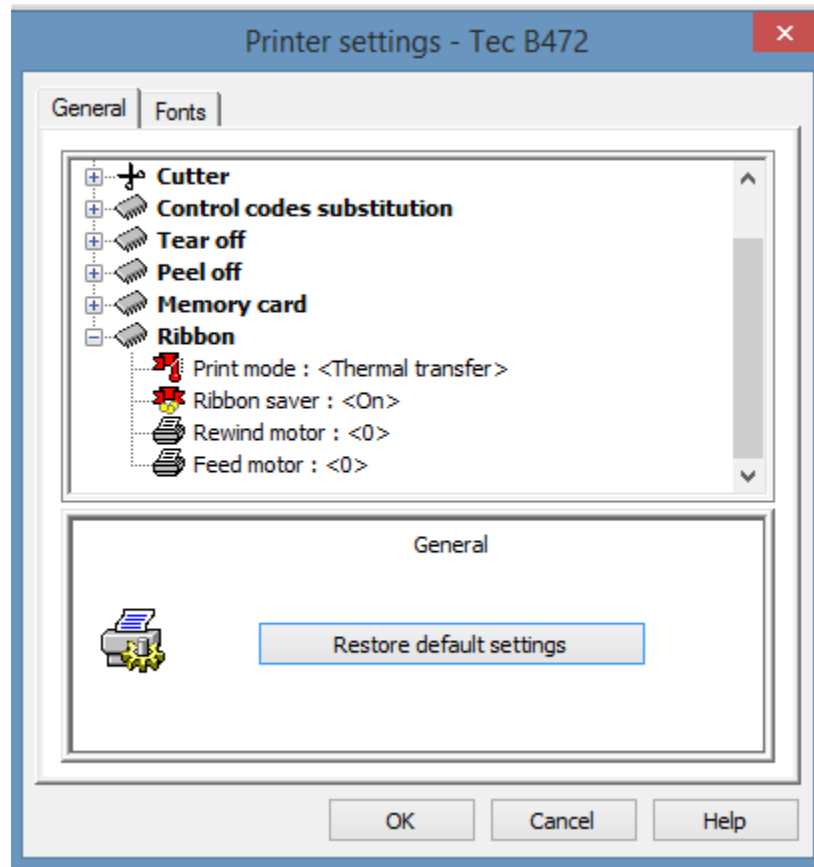
## Service Documents from APPI





# How To

## Service Documents from APPI



Click **“OK”**. Save Print Drive and Label Setting to Label by Clicking **“Save”** in LabelView.