

How To

Service Documents from APPI

Document: #HT000143

Document Title: Load ZPL Files via Zebra Setup Utilities

Product(s): Ti-1000Z

Procedure:

Zebra Setup Utilities (ZSU) is available for download [here](#).

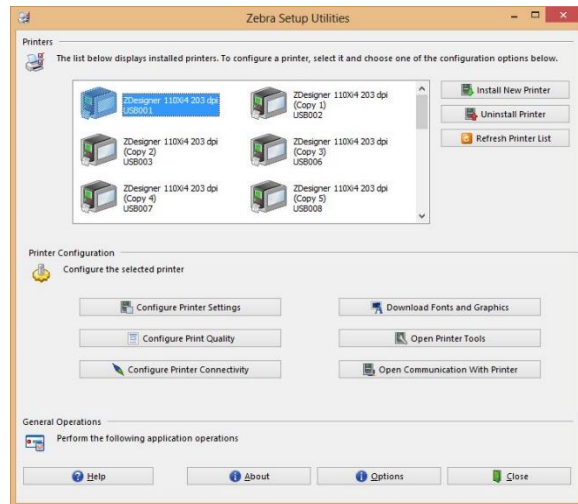
You may need to scroll down the page to find the Zebra Setup Utilities.

Install the software on a computer that is connected to the printer via USB cable (such as a laptop).

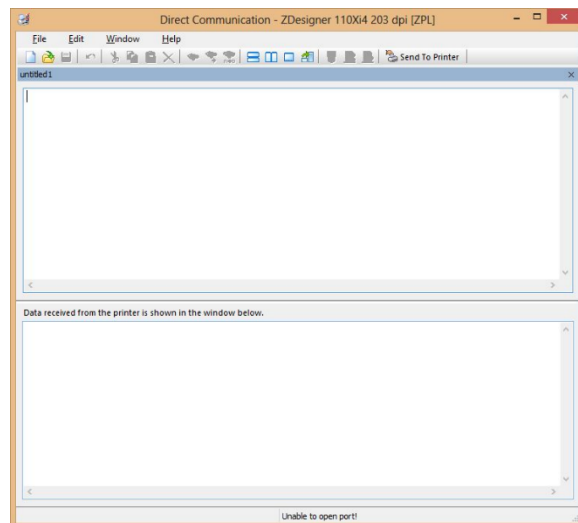
Clear labels from the Bagger.

Open ZSU.

Once set up with ZSU, make sure the printer is highlighted, and click Open Communication With Printer



This window will appear.



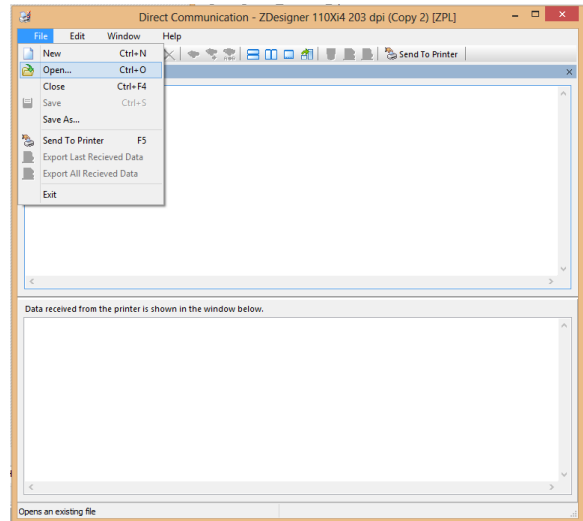


How To

Service Documents from APPI

Click File – Open.

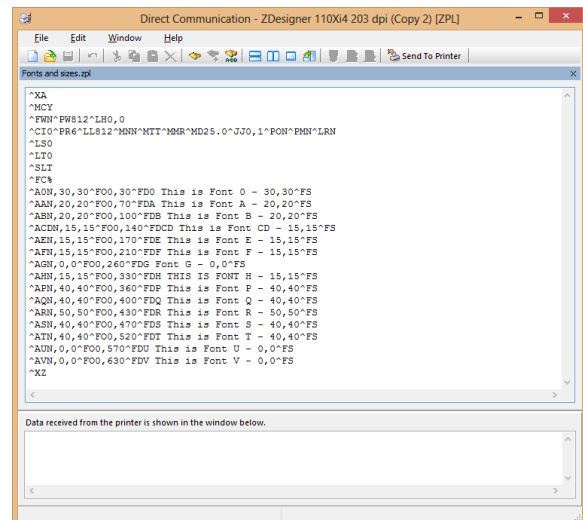
Browse to the file you need, and open it.
This example uses the “Fonts and sizes.ZPL”.



Click *Send To Printer*.

The Bagger will now show as having a label.

Print the label.



Note:

If your label or commands include the command to store the label on the printer, the printer screen will not show as having a label. You must load the labels from the Stored Labels screen.