



How To

Service Documents from APPI

Document: #HT000135

Document Title: Install Firmware for APPI Zebra Printer

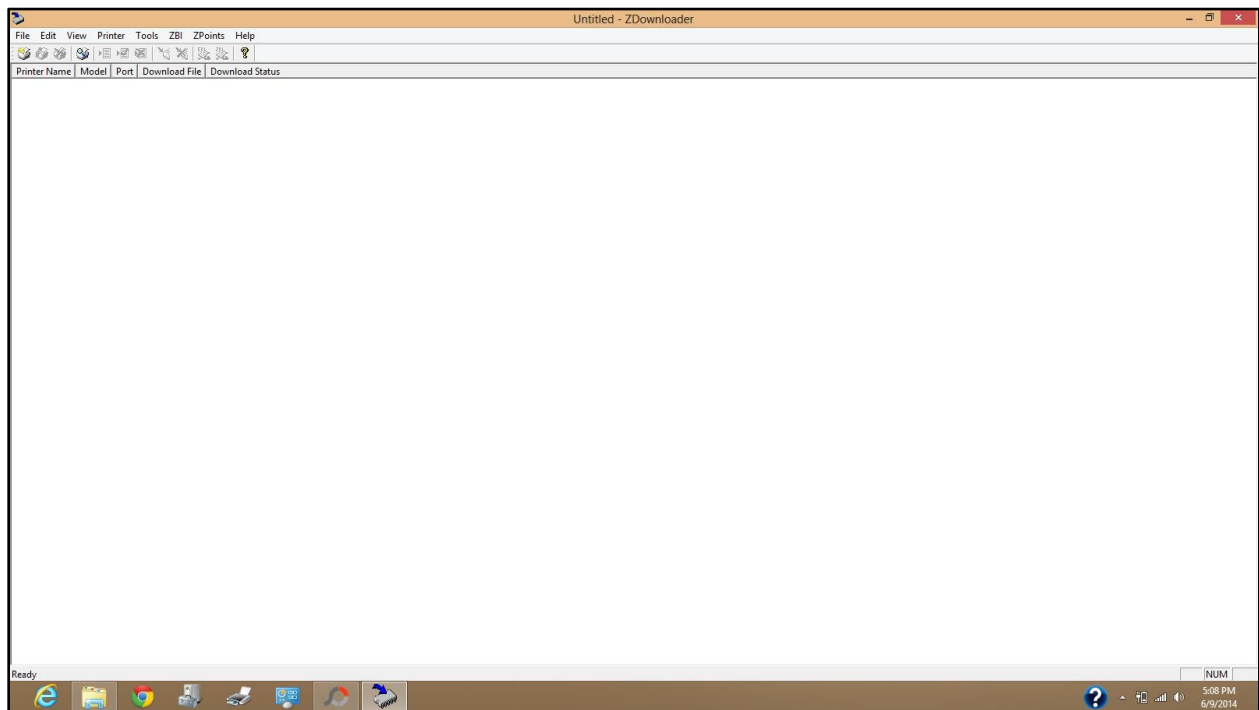
Product(s): Ti-1000Z

Procedure:

Download the Z Download utility [here](#).

You will be using APPI's firmware.

After downloading the program from the Zebra web site, install, and open it. It will look like this:

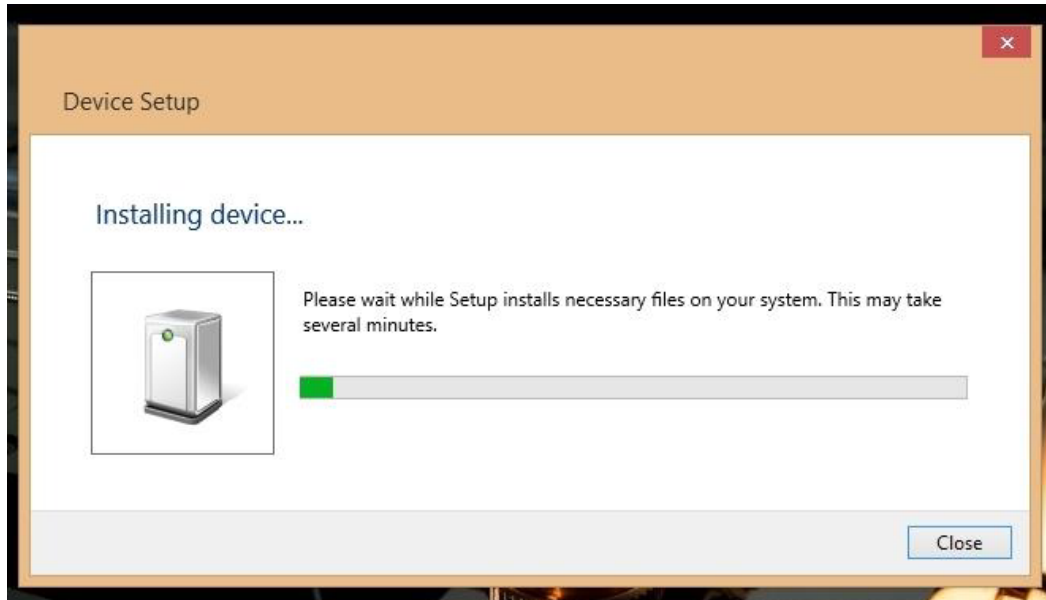




How To

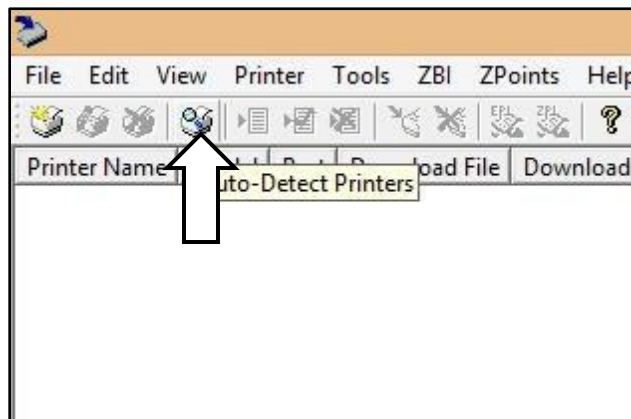
Service Documents from APPI

Connect USB cable. You may get up this screen:



Wait for it to finish.

Click to auto detect printer.

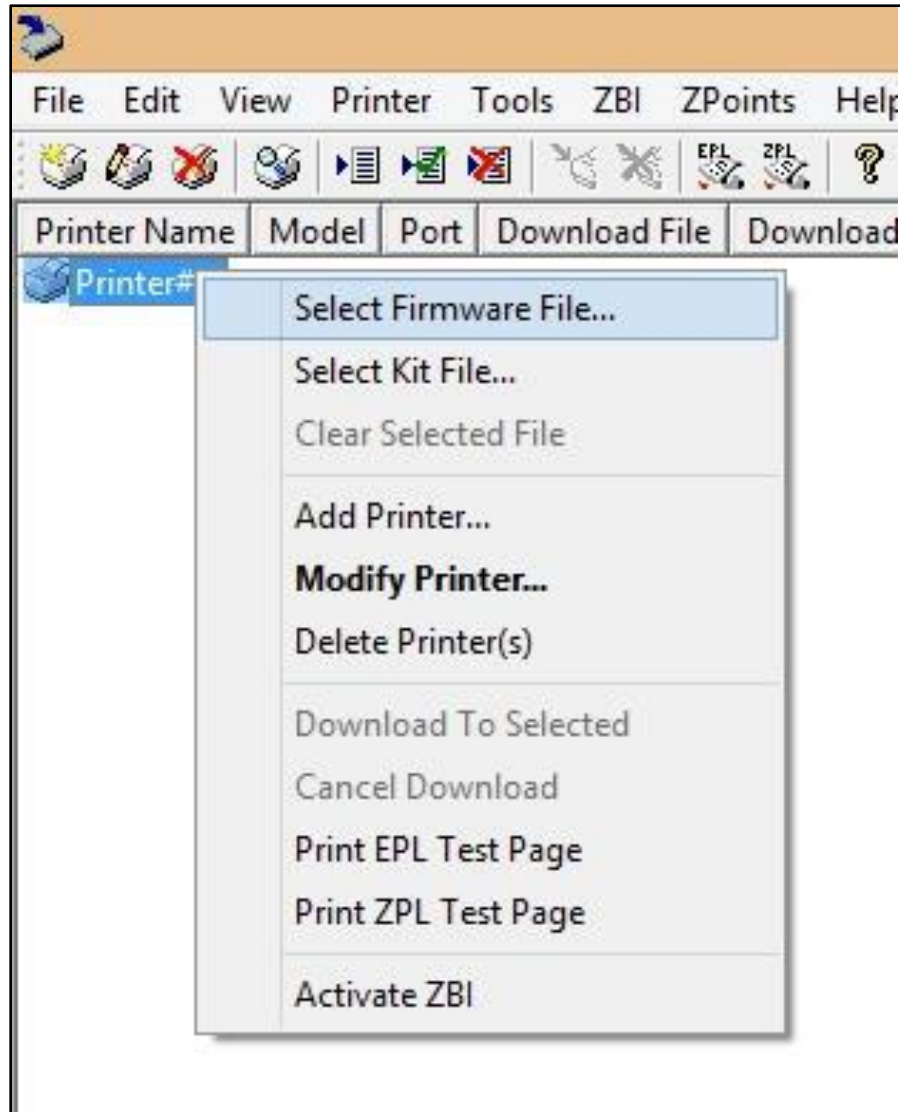




How To

Service Documents from APPI

When ready, right click to load firmware.

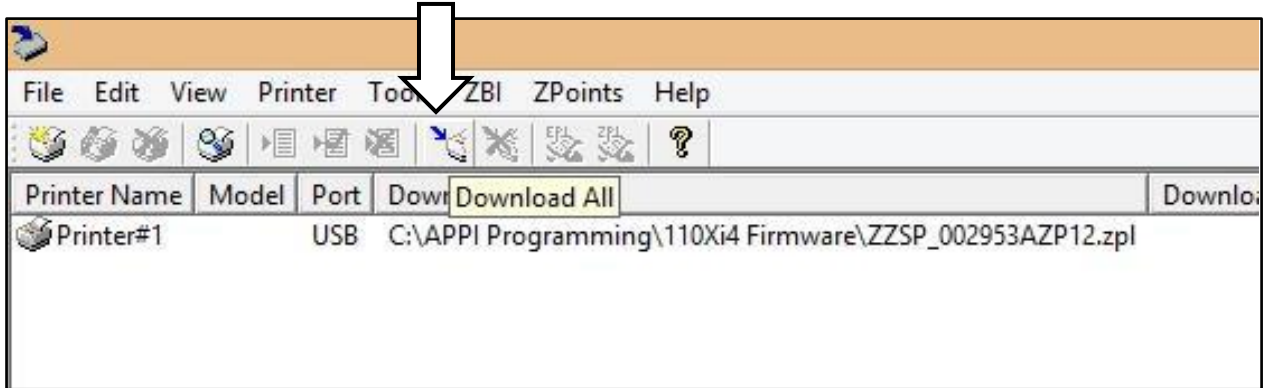


Browse to where your .ZPL file is, and double-click it.

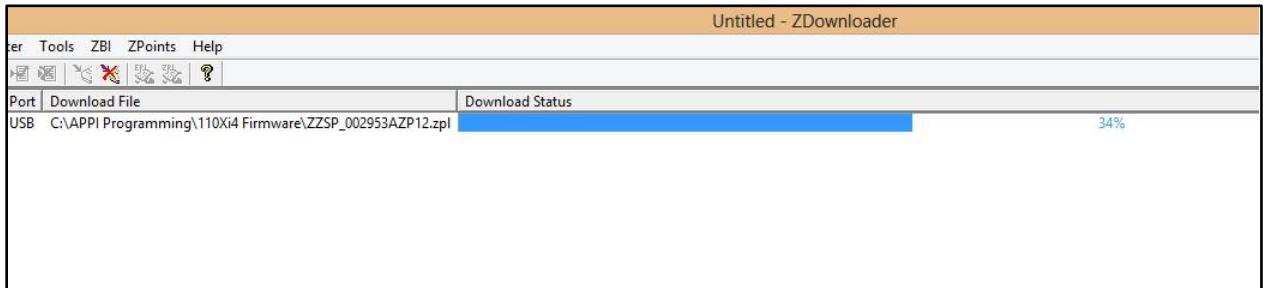
How To

Service Documents from APPI

Click Download All to start downloading the file to the printer.



Wait for download to finish. It is normal that it stops a few minutes on 34%, and then resumes.



If download fails, or an error message pops up, do it again.

When done, close Downloader program.