

How To

Service Documents from APPI

Document: #HT000138

Document Title: Enter Printer Settings via Zebra Setup Utilities

Product(s): Ti-1000Z

Procedure:

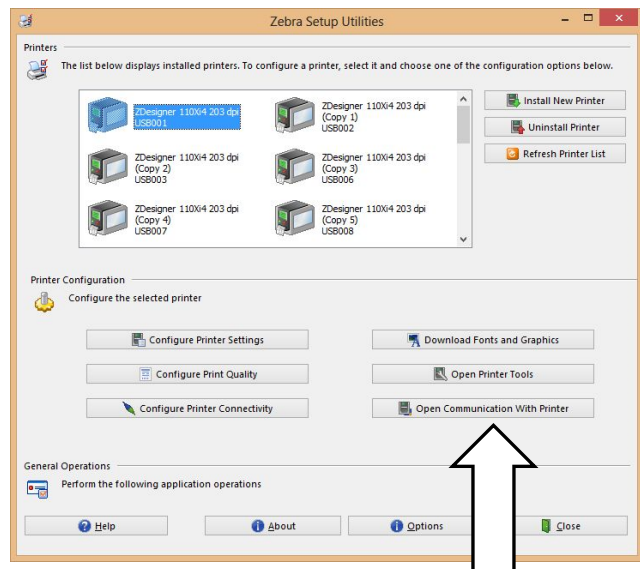
Prerequisite: Zebra Setup Utilities (ZSU) must already be installed on your computer.

The ZPL II Programming Guide is available for download [here](#).

ZSU is available for download [here](#).

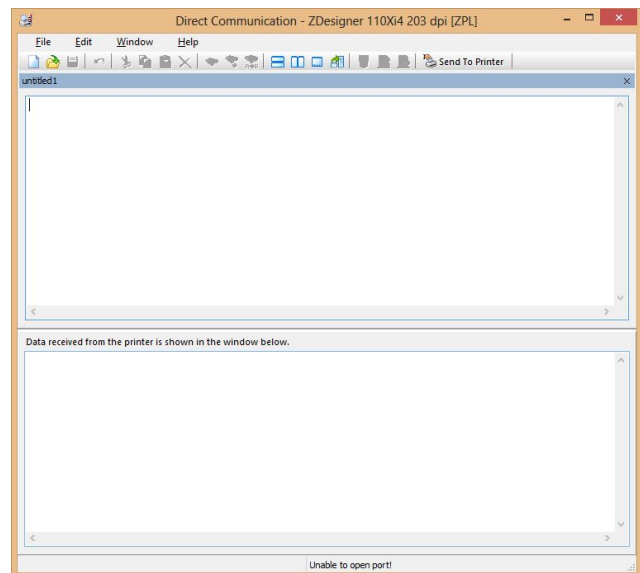
All printer settings for the Zebra printers can be set via ZSU.

This also includes the settings normally set via the front panel.



Once set up with ZSU, make sure the correct printer is highlighted, and click “**Open Communication With Printer**”.

This window will appear.





How To

Service Documents from APPI

You can now type in ZPL II commands.

You always need to start with **^XA**.

You always need to finish with **^XZ**.

The example shows how to set print width, **^PW**.

When ready, click **Send To Printer**.

All ZPL commands are available in the ZPL II Programming Guide, Vol. 1.

