



# How To

Service Documents from APPI

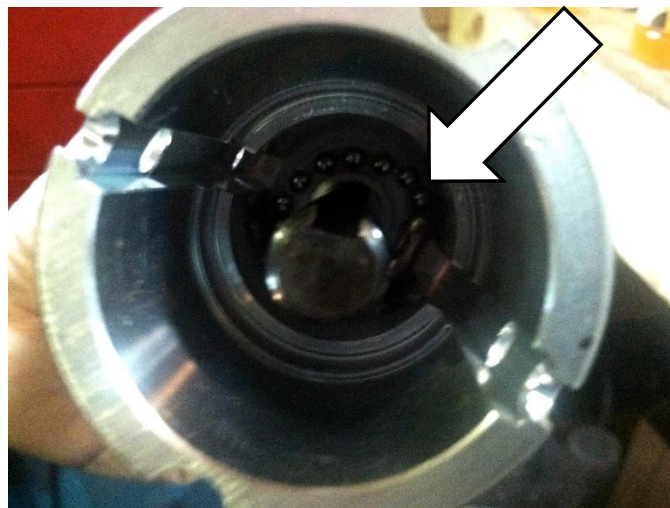
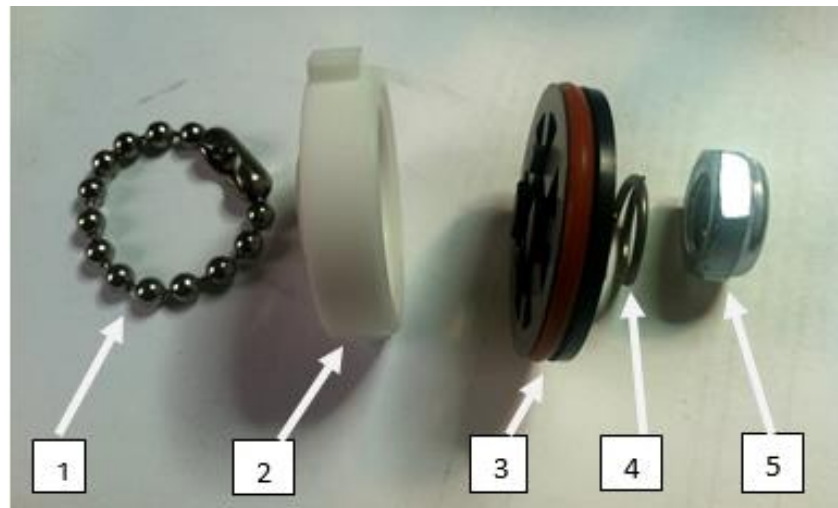
**Document: #HT000009**

**Document Title: Assemble Zebra Take-Up Spindle**

**Product(s): Ti-1000Z**

**Procedure:**

The Take-Up Spindle parts must be assembled in the order indicated in the following picture:

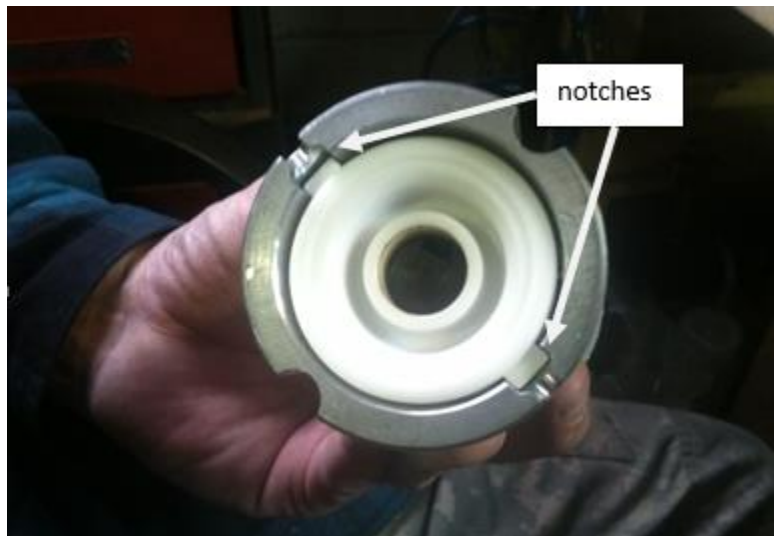


Put Chain in first #1



# How To

## Service Documents from APPI



Put Nylon piece in #2. *Note: the notches must line up.*



#3 is next; orange O ring side against #2



# How To

## Service Documents from APPI

Put Spring #4 in next.



Thread on #5- $\frac{3}{4}$ " nut so that 2 threads are showing.



Refer to this Video Link on adjusting the tension of the Nut.

Copy and paste in your browser

<https://www.youtube.com/watch?v=DV7oV81f9S8>