

How To

Service Documents from APPI

Document: #HT000109

Document Title: Adjust the Ribbon Sensor

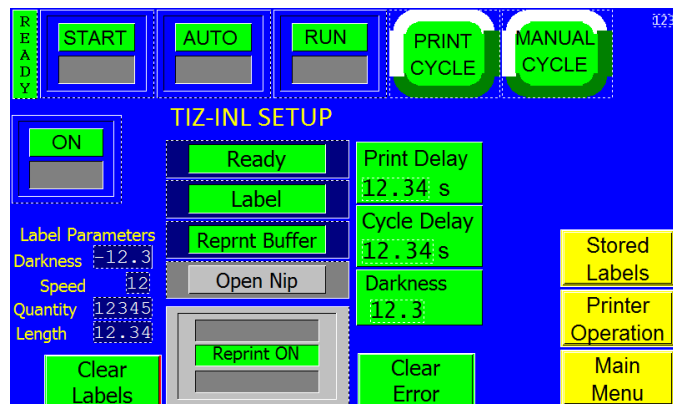
Product(s): Ti-1000Z

Procedure:

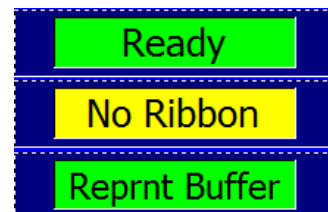
This HOW TO shows the steps to adjust the **Ribbon Sensor** on the Ti1000Z Printer via ZPLII code. It also includes the actual code.

When the printer is ready to be run, the **Setup Screen** and/or **TIZ Operation Screen** will normally resemble this, with the following indicators all showing green:

- Ready
- Label
- Reprint Buffer



If there is a problem with the ribbon, this will show:



If the indicator doesn't show when you're out of ribbon, or always shows when you have ribbon, you will need to adjust the sensitivity of the **Ribbon Sensor**.

This procedure assumes **Zebra Setup Utilities (ZSU)** is already set up on your computer. If not, **ZSU** is available for download here:

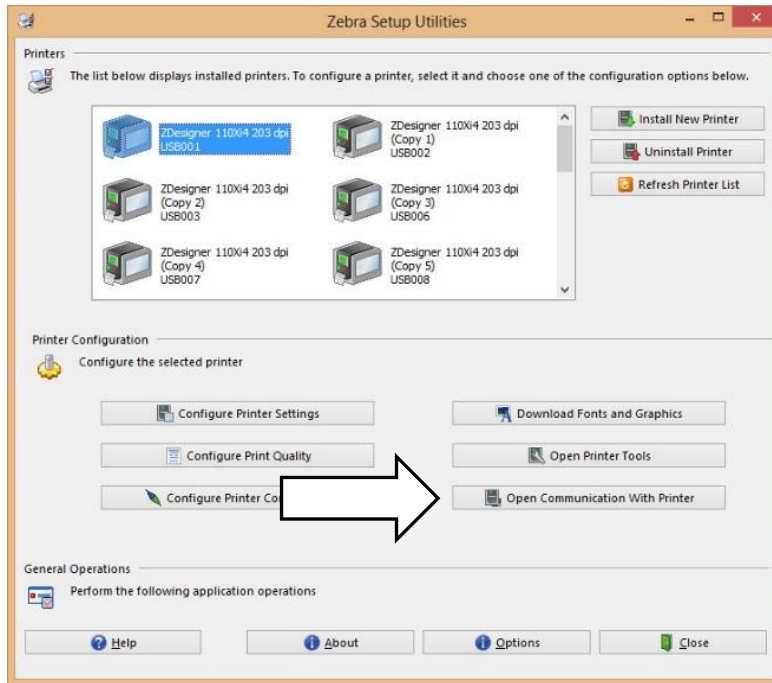
https://www.zebra.com/us/en/support-downloads/printers/industrial/110xi4.html#downloadlistitem_9aa

How To

Service Documents from APPI

Connect your computer to the printer using a USB Printer Cable.

Open ZSU, and click on the printer you want to load the labels onto.



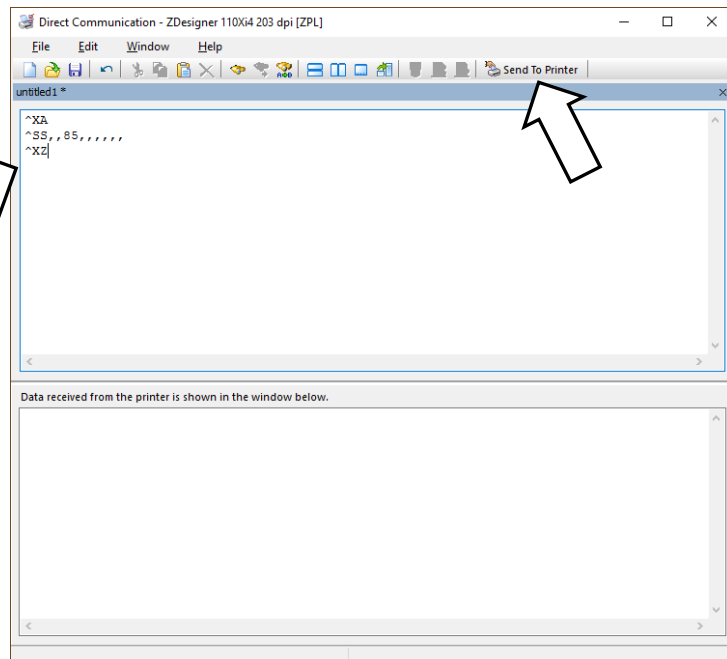
Then click “Open Communication With Printer”.

When this window appears, copy the following codes into the ZSU window:

```
^XA
^SS,,85,,,,,
^XZ
```

Click “Send To Printer”.

Exit out of ZSU.



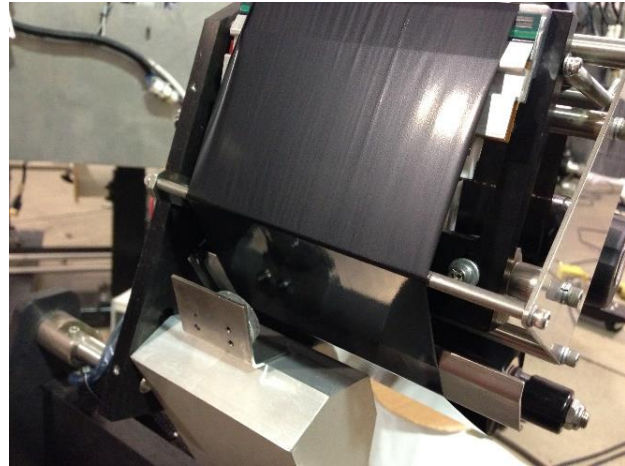


How To

Service Documents from APPI

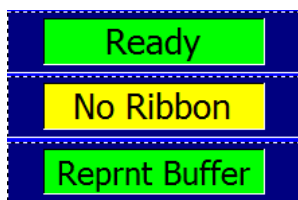
Turn off the Bagger, then turn it back on. This makes sure your setting takes effect.

Lift the printer up and to where it rests in the back position.



Move the printer ribbon away from the **Ribbon Sensor**.

The indicators should now display the following:



If not, repeat the **ZSU** procedure with a higher number.

If the **“No Ribbon”** display becomes constant, your number is too high.

When done, exit **ZSU** before disconnecting from the printer.