



# How To

## Service Documents from APPI

**Document: #HT000150**

**Document Title: Calibrate V810 Touch Screen**

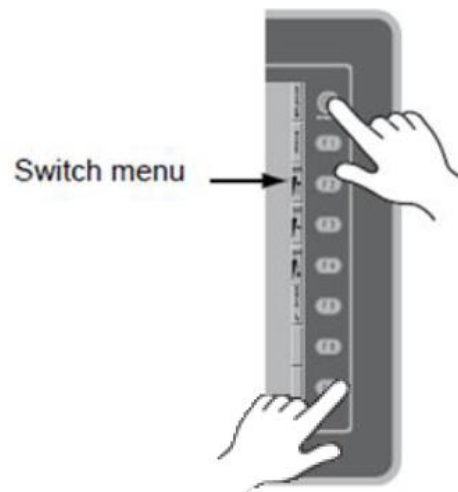
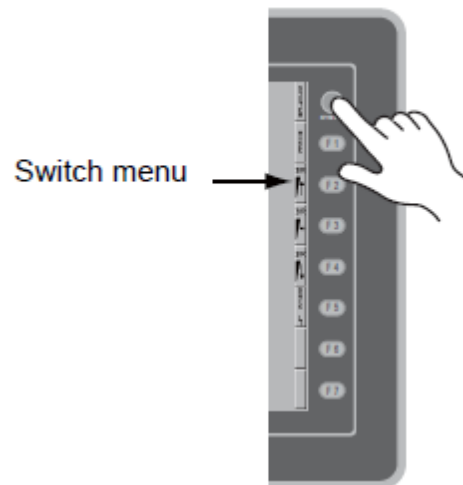
**Product(s): US-9000**

### **Procedure:**

*Displaying the Main Menu screen*

To bring up the **Main Menu** while APPI's Touch Screen program is running, Press **SYSTEM**.

In the T1070 screen you have to be in the Bagger Factory screen. Press the Function Key button twice to get the function keys.



Then press **F1** and **F7** simultaneously.

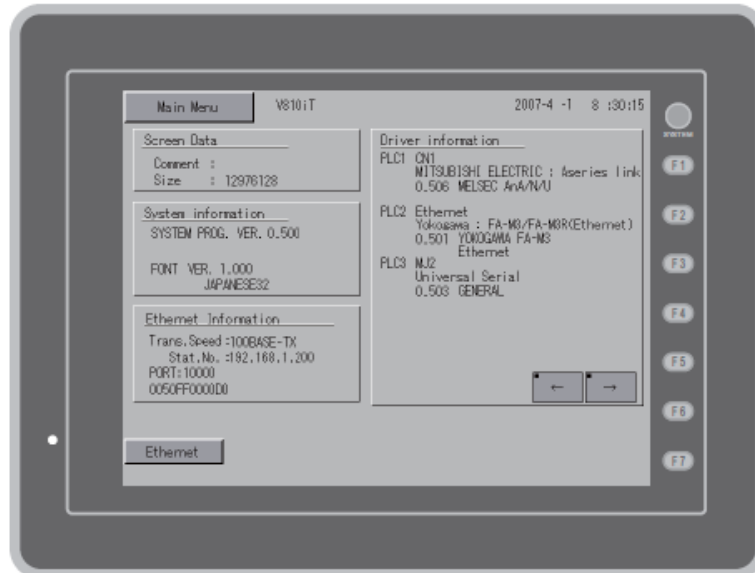
In the T1070 Screen, press **System**, then **F10**.



# How To

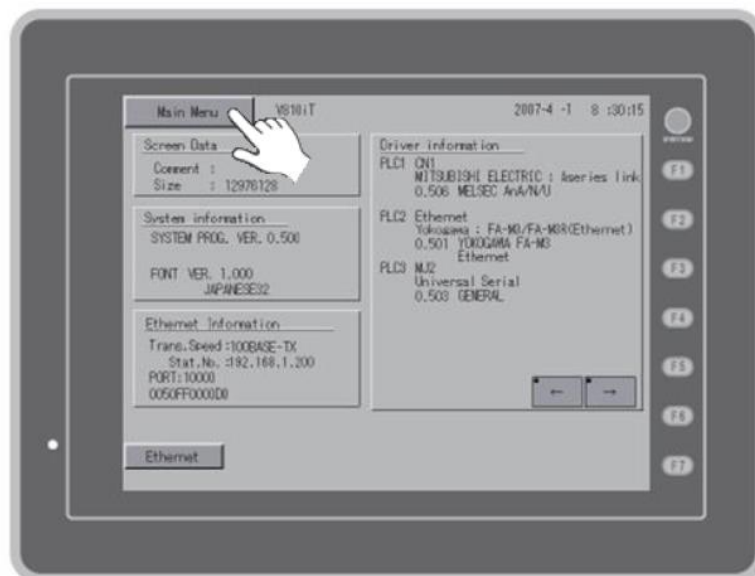
## Service Documents from APPI

This will bring up the Main Menu.



*Check Touch Offset*

Press **Main Menu**.

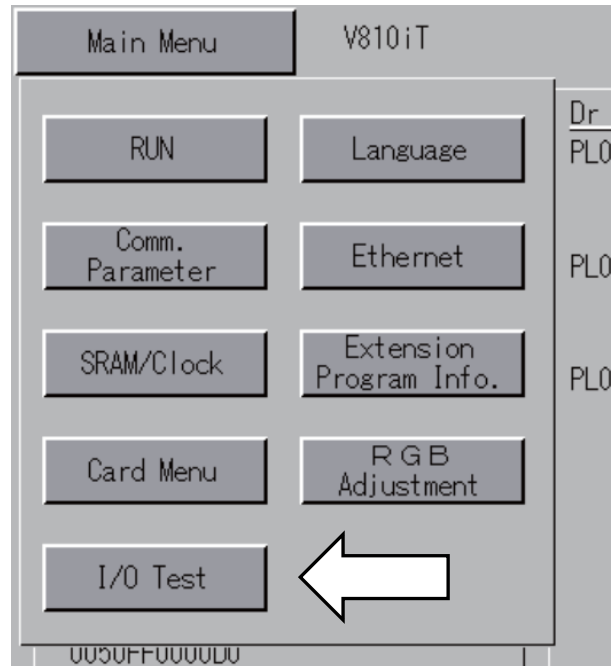




# How To

## Service Documents from APPI

Press I/O Test



Press Switch Check.





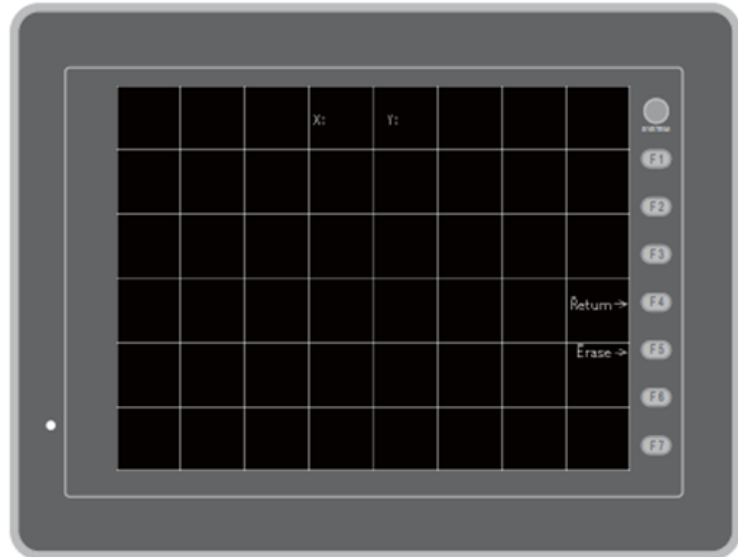
# How To

## Service Documents from APPI

F4 will return to the previous screen.

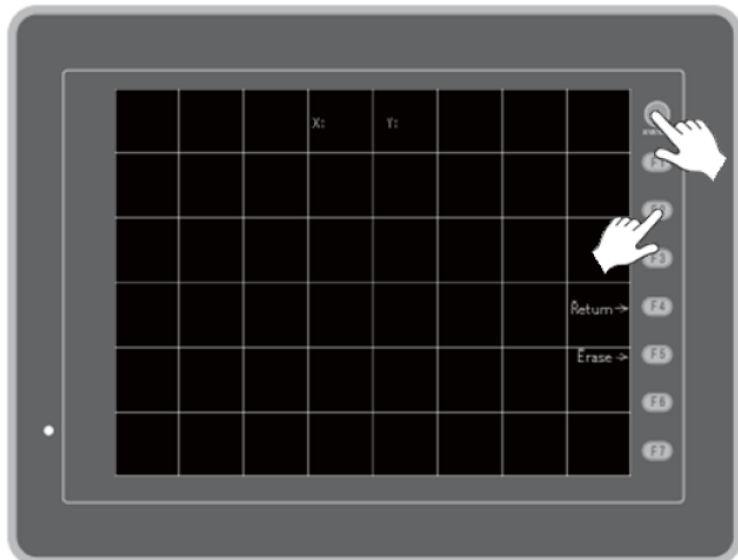
With a stylus or similar, press inside the grid, White dots will appear. If they are off from where you pressed, you need to calibrate the screen.

F5 will erase the dots you produced.



### *Calibration*

To calibrate, press **SYSTEM** and **F2** simultaneously.





# How To

## Service Documents from APPI

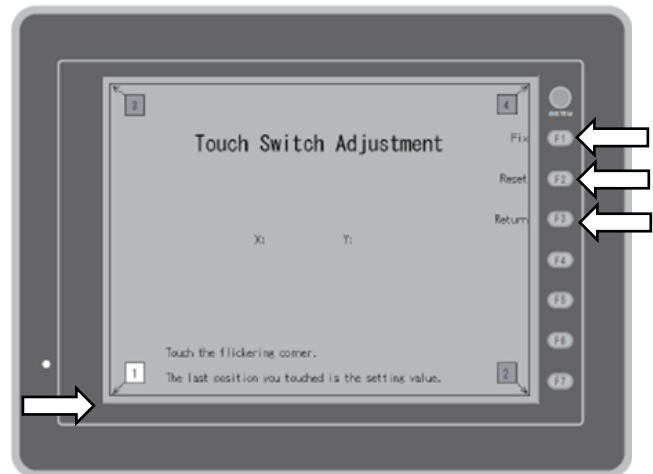
With a stylus, or similar, press the lower left corner where the **1** is flashing. When you release the stylus, a bee sounds, and number **2** flashes. Repeat for all 4 corners.

**F1** Fix stores the new calibration and returns to previous screen.

**F2** Reset resets the calibration and lets you start over.

**F3** Return cancels and returns to the previous screen.

When done, press **F1** to save (or **F3** to cancel).

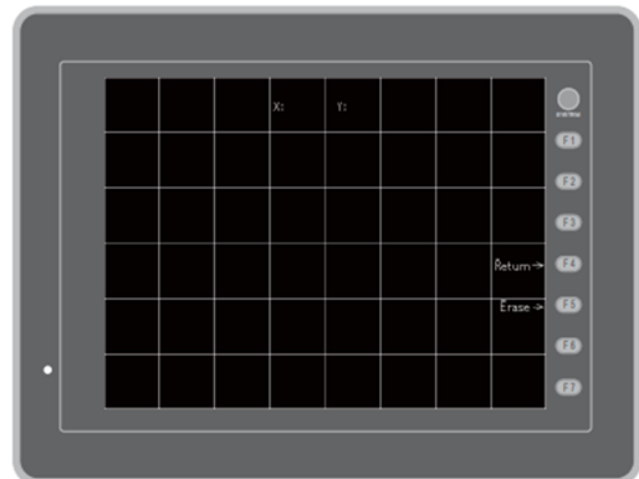


Test the grid to see if the white dots are aligned where you touch.

If the dots do not align with your press, redo the calibration.

If the dots align well, press **F5** to erase the dots.

Then press **F4** to exit out of test screen.



Press Return to go back to the **Main Menu**.

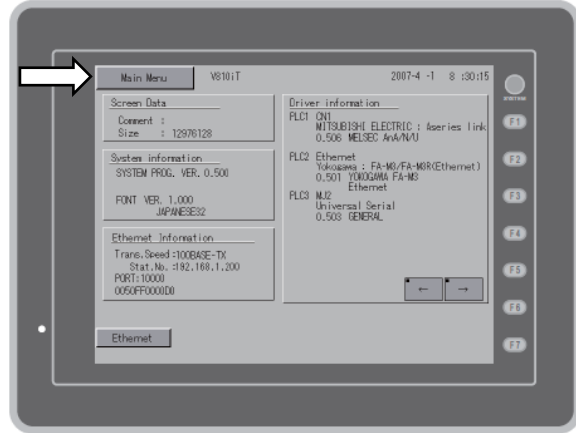




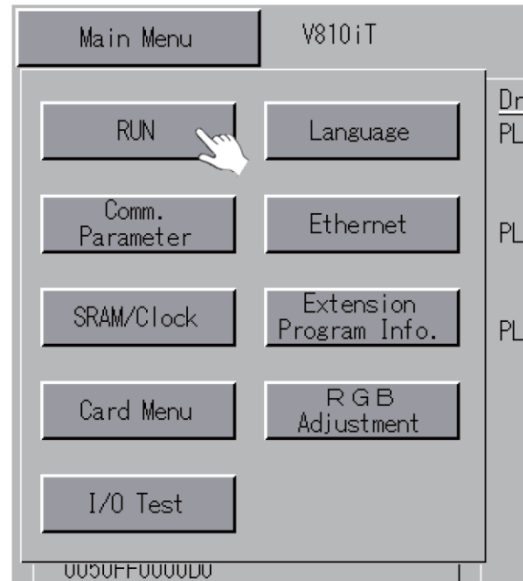
# How To

## Service Documents from APPI

In the Main Menu, Press Main Menu.



In the Drop-Down Menu, press RUN.



This will bring up the normal APPI screens.

