

HOW TO Service documents from APPI

Document: #HT000201

Document Title: HOW TO Network setup for ZT printer

Product(s): Any ZT printer

Procedure:

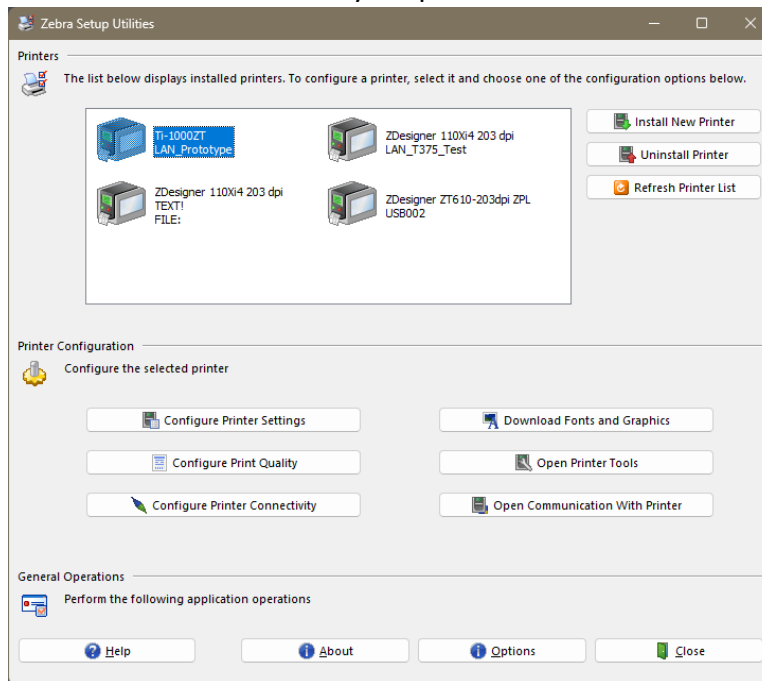
Zebra Setup Utilities can be downloaded here:

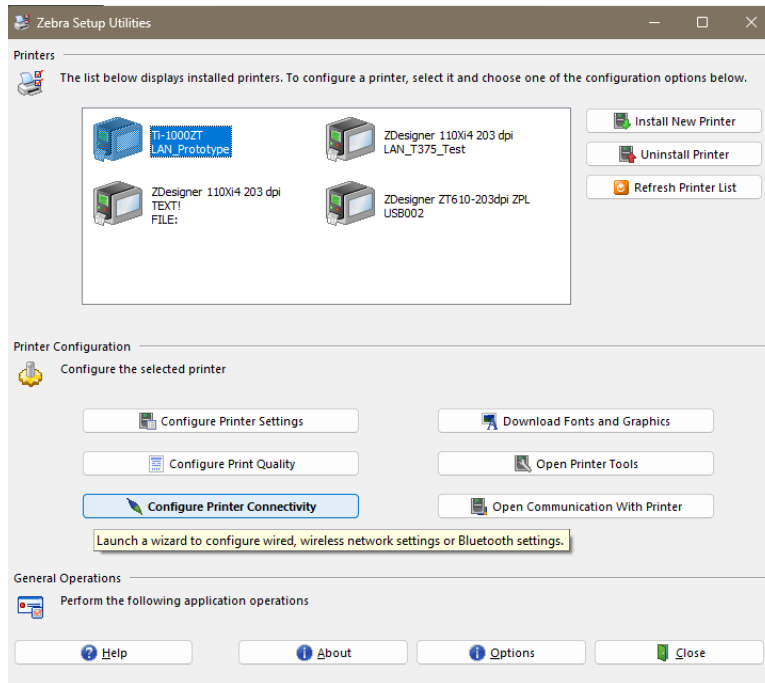
<https://www.zebra.com/us/en/support-downloads/printers/industrial/zt610.html?downloadId=3b7879b0-5037-4840-9d6a-b71b6f5c819a#Tab-item-e13faeefe6-tab>

Printer driver settings can be downloaded here:

<https://ecom.advancedpoly.com/pub/media/sampleimageuploader/images//h/t/ht000200.pdf>

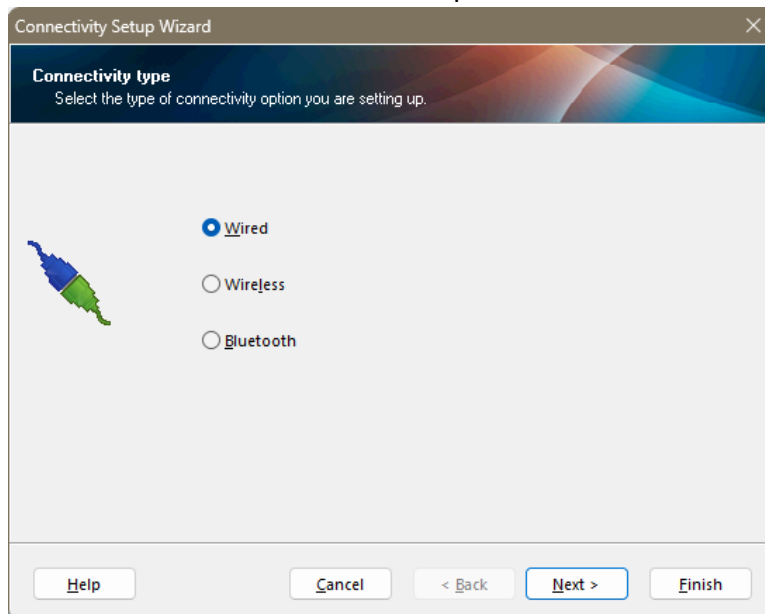
Select your printer:



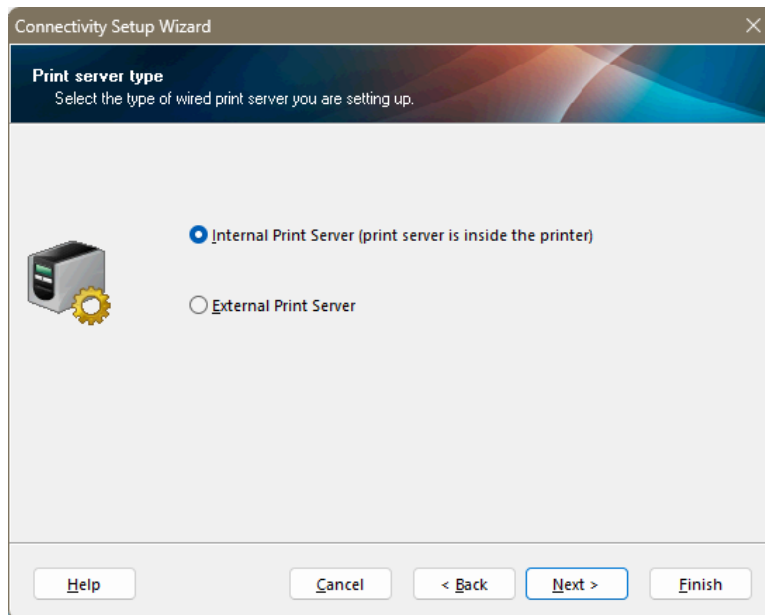


Click **Configure Printer Connectivity**

Wired Setup:

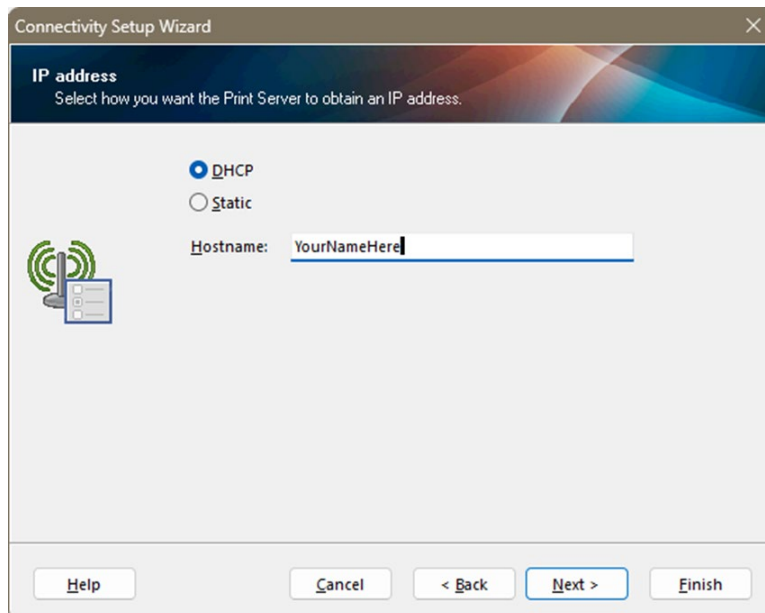


Click **Next**.



Click **Next**.

DHCP:

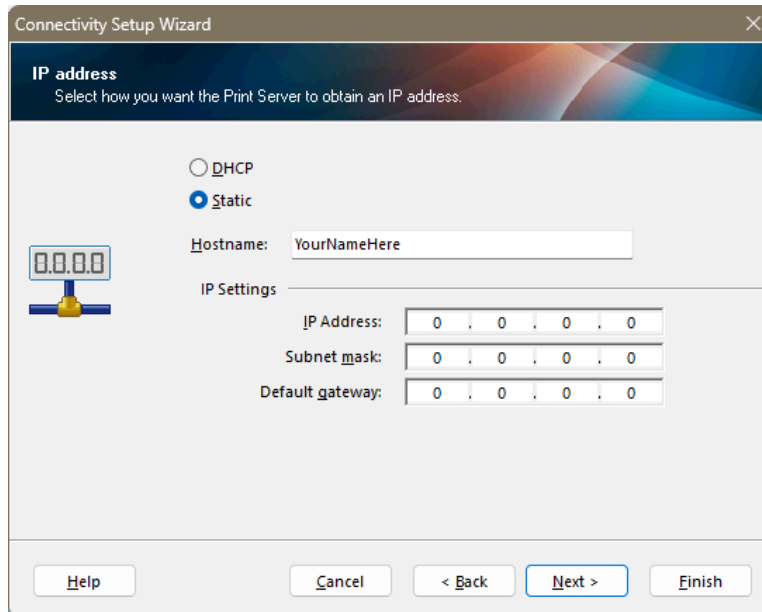


Choose a host name and fill in.

At this point you can click Finish. This will send the network setup to the printer. The printer will reboot with the new settings.

Or you can click **Next** to see the codes and save them in a file for later use.

Static:



Connectivity Setup Wizard

IP address
Select how you want the Print Server to obtain an IP address.

DHCP
 Static

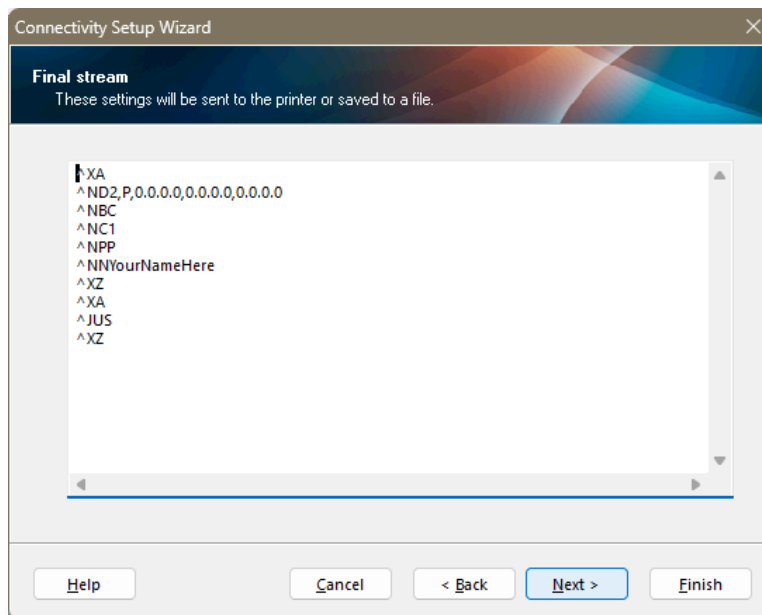
Hostname:

IP Settings

IP Address:
Subnet mask:
Default gateway:

Help Cancel < Back Next > Finish

Choose a host name and fill in according to your network.
IP Address - Subnet Mask - Default Gateway
Click **Next**.



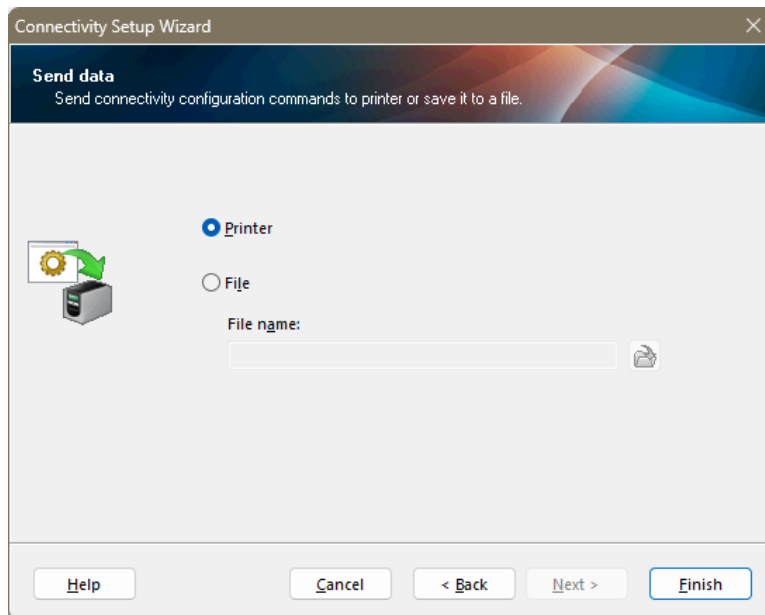
Connectivity Setup Wizard

Final stream
These settings will be sent to the printer or saved to a file.

```
^XA
^ND2,P,0.0.0.0,0.0.0.0,0.0.0.0
^NBC
^NC1
^NPP
^NNYourNameHere
^XZ
^XA
^JUS
^XZ
```

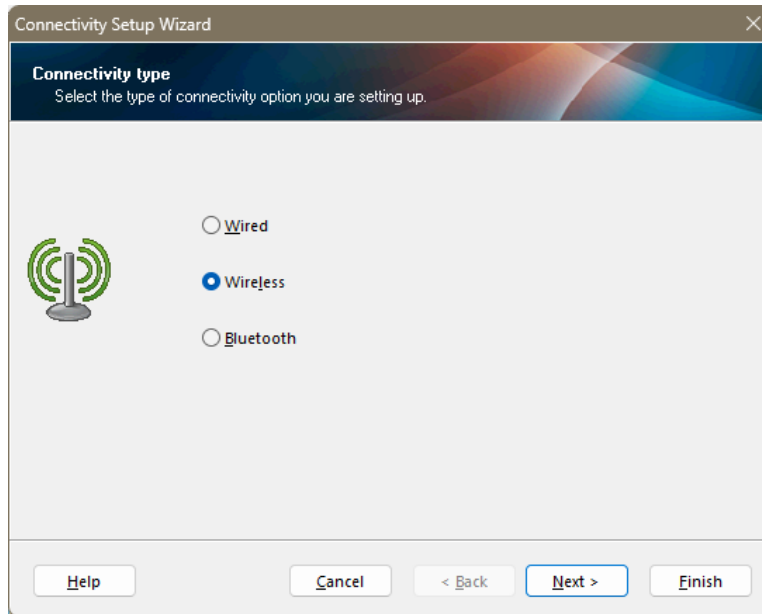
Help Cancel < Back Next > Finish

Click **Next**.



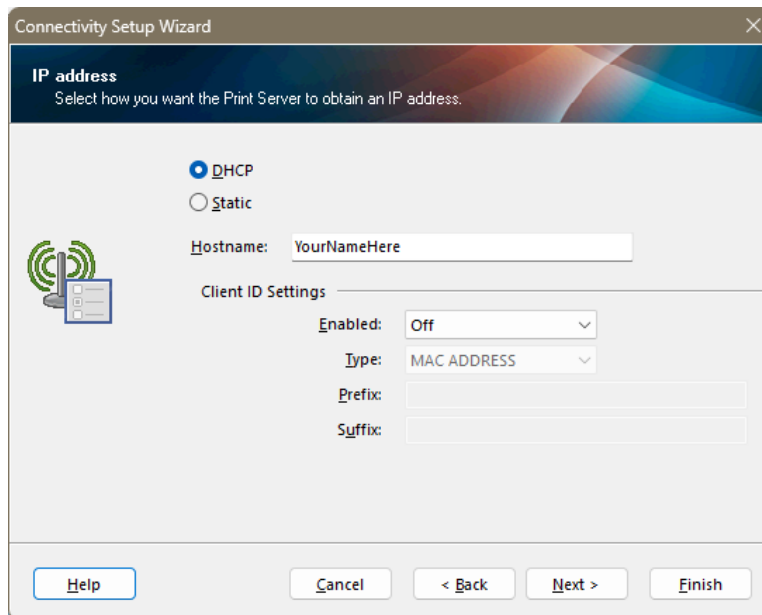
Click **Finish** to send to printer.
Or click **File** to save to a file.

Wireless:



Click **N**ext.

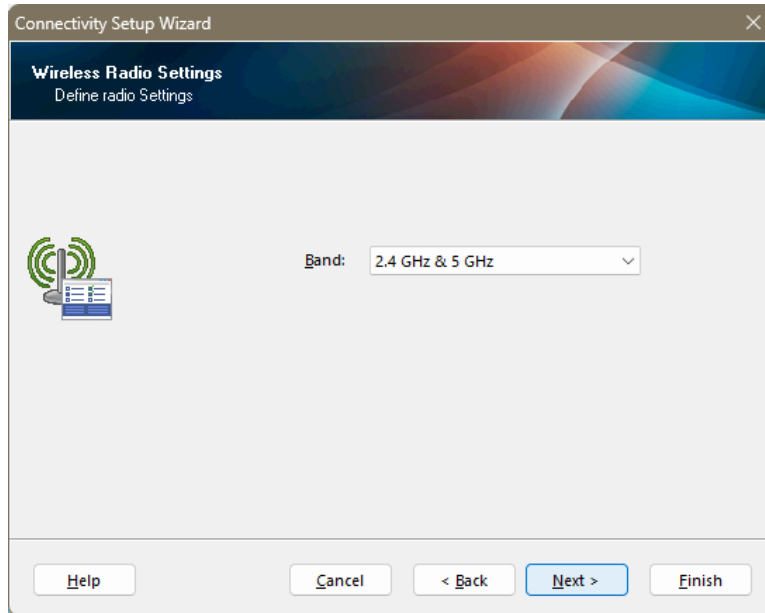
DHCP:



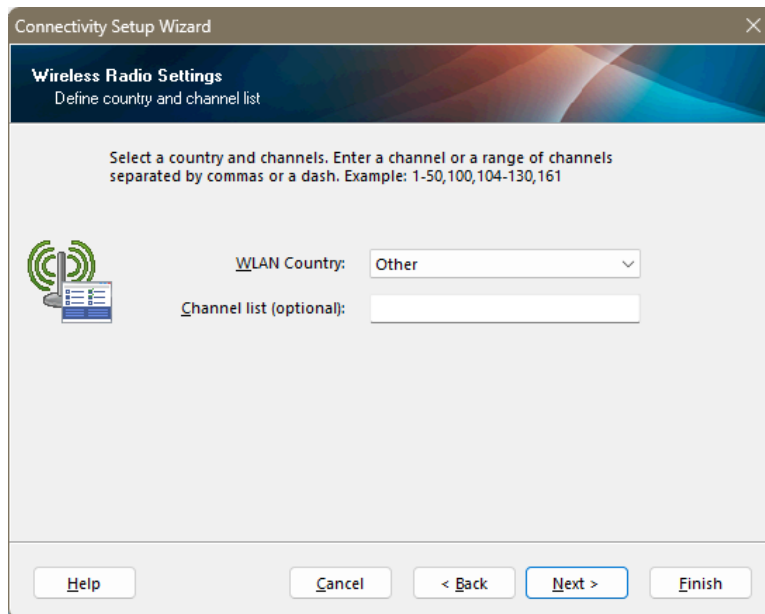
Choose a host name and fill in.

Set up Client ID settings according to your network.

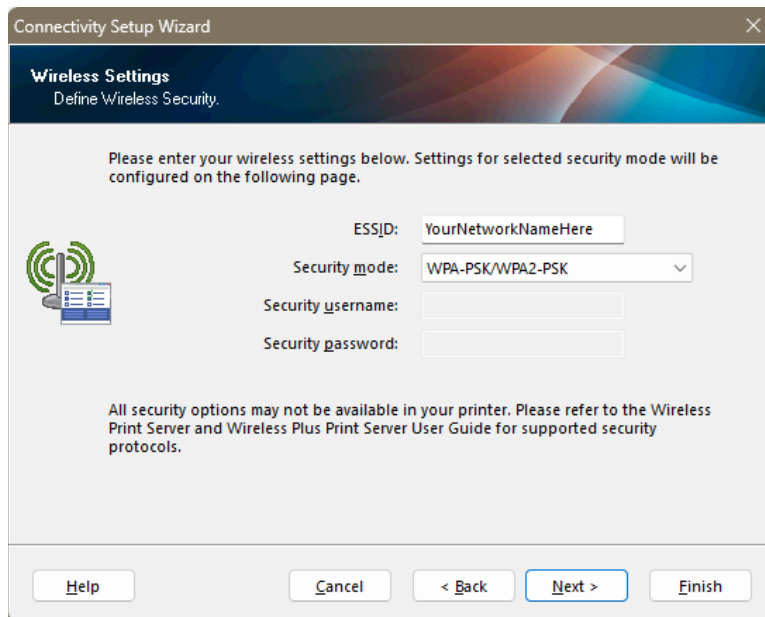
Click **N**ext.



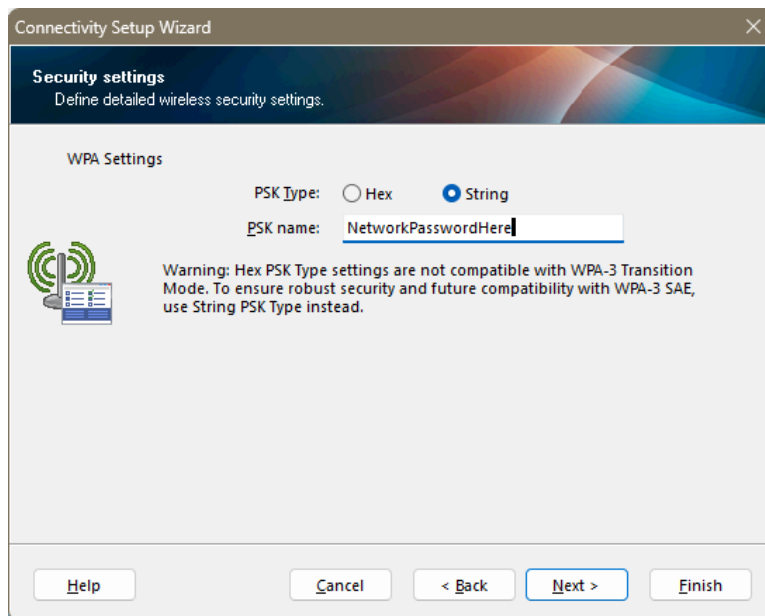
Choose according to your network.
Click **Next**.



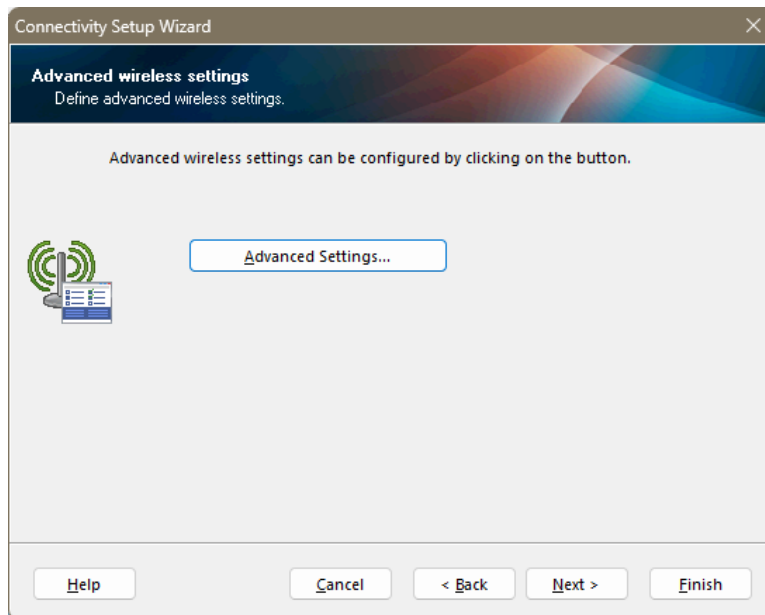
Choose and set up according to your network.
Click **Next**.



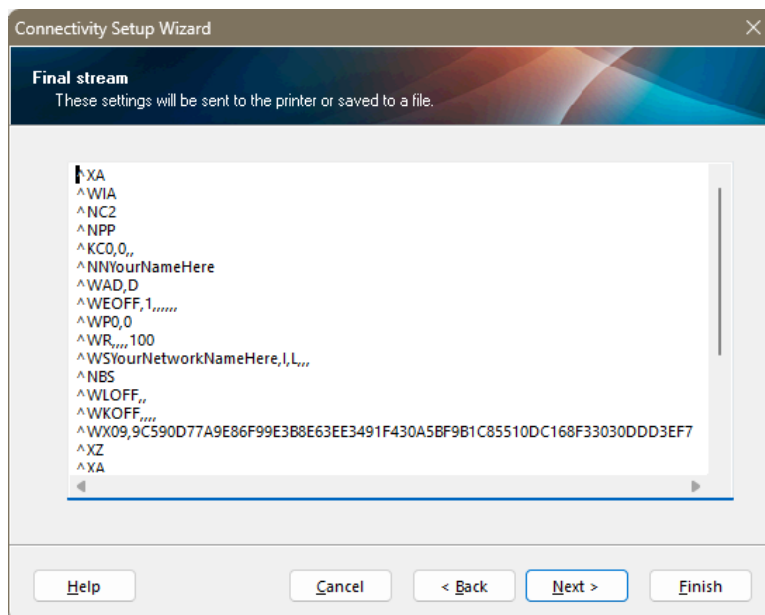
Choose and set up according to your network.
This example uses WPA-PSK.



Choose and set up according to your network.
Click **Next**.



Choose and set up according to your network.
Click **Next**.



Click **Next**.

Static:

Connectivity Setup Wizard

IP address
Select how you want the Print Server to obtain an IP address.

DHCP
 Static

Hostname: YourNameHere

IP Settings

IP Address: 0 . 0 . 0 . 0
Subnet mask: 0 . 0 . 0 . 0
Default gateway: 0 . 0 . 0 . 0

Help Cancel < Back Next > Finish

Choose a host name and fill in according to your network.

IP Address - Subnet Mask - Default Gateway

Click **Next**.

All the following screens are the same.