



How To

Service Documents from APPI

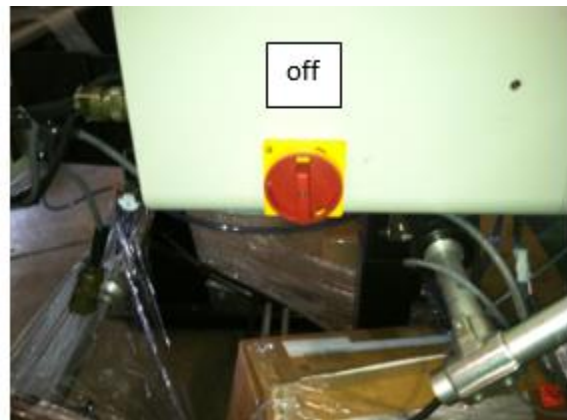
Document: #HT000017

Document Title: Replace PLC Battery

Product(s): T-1000

Procedure:

Turn Main Power Switch counter-clockwise to the "Off" position.



Unscrew button head screw.





How To

Service Documents from APPI



Carefully pull top of cover open.



Then pull bottom of cover out.



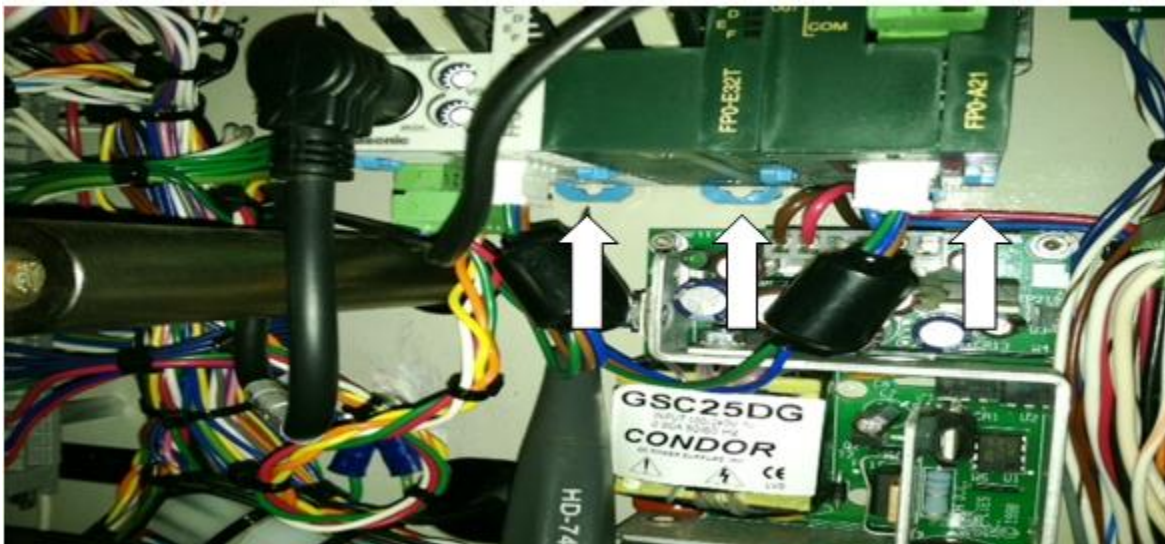
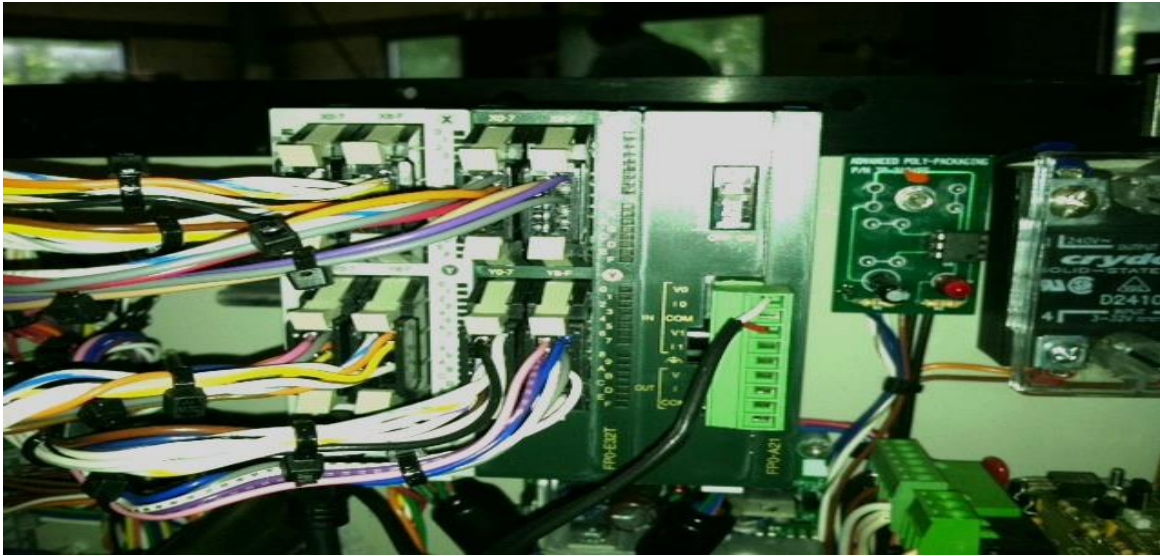
Then turn Master Switch clockwise to the “On” position.

Important: If the power is off when the PLC battery is replaced, all programming will be lost!



How To

Service Documents from APPI

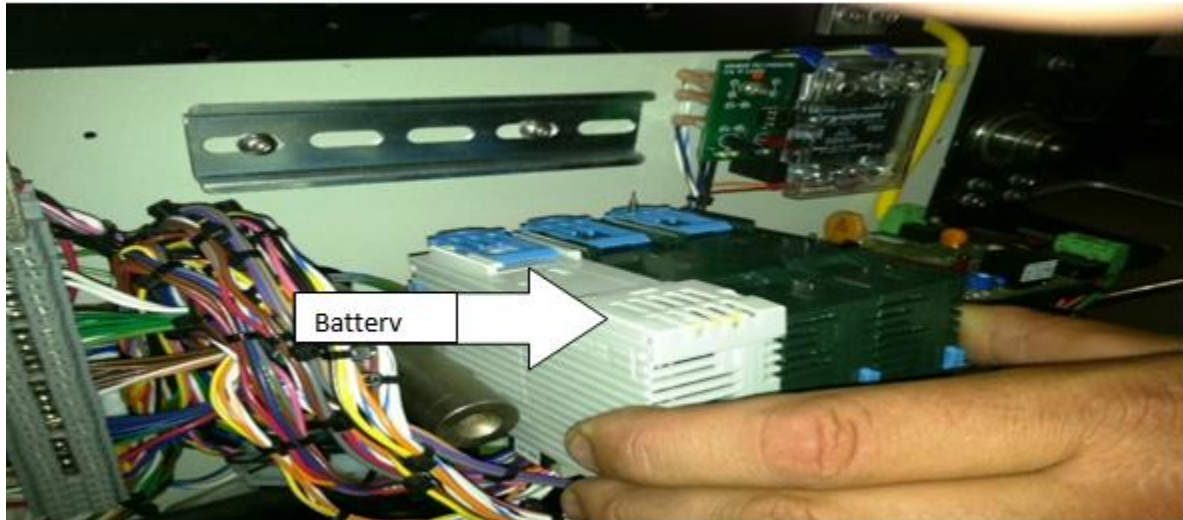


Carefully pull the three (3) blue tabs (on bottom) out slightly to release the PLC, Expansion and Analog cards from the DIN rail. Do separate the three.



How To

Service Documents from APPI



With a small screwdriver, pry back the battery cover.

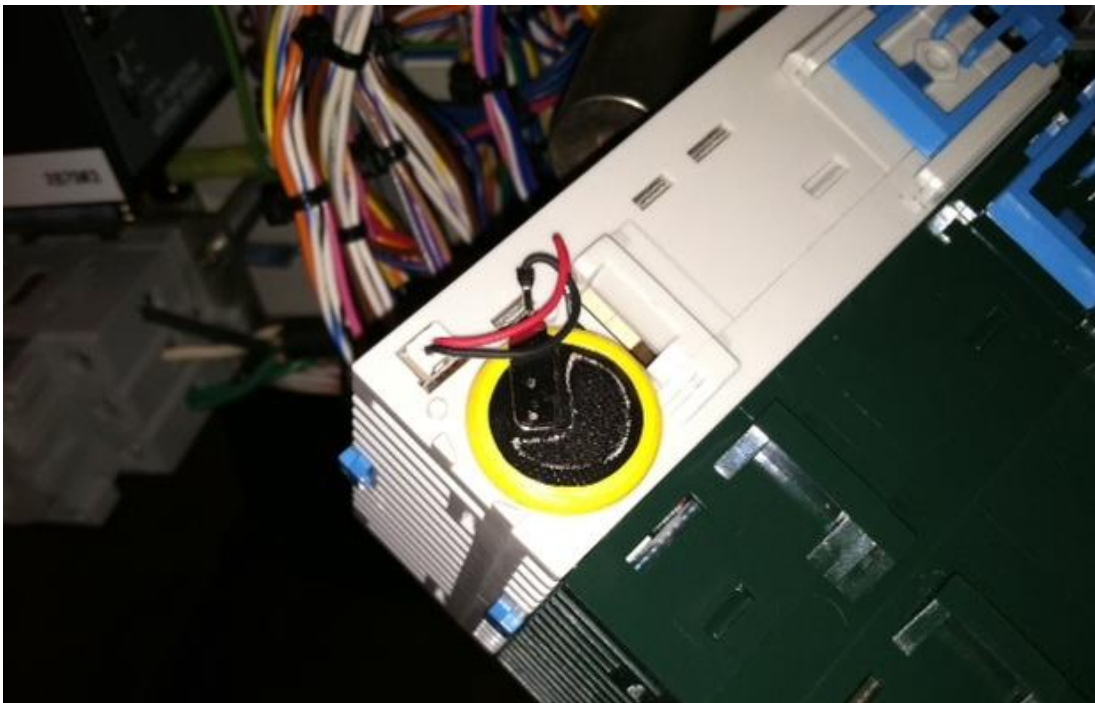


How To

Service Documents from APPI



Locate the battery compartment and open it.

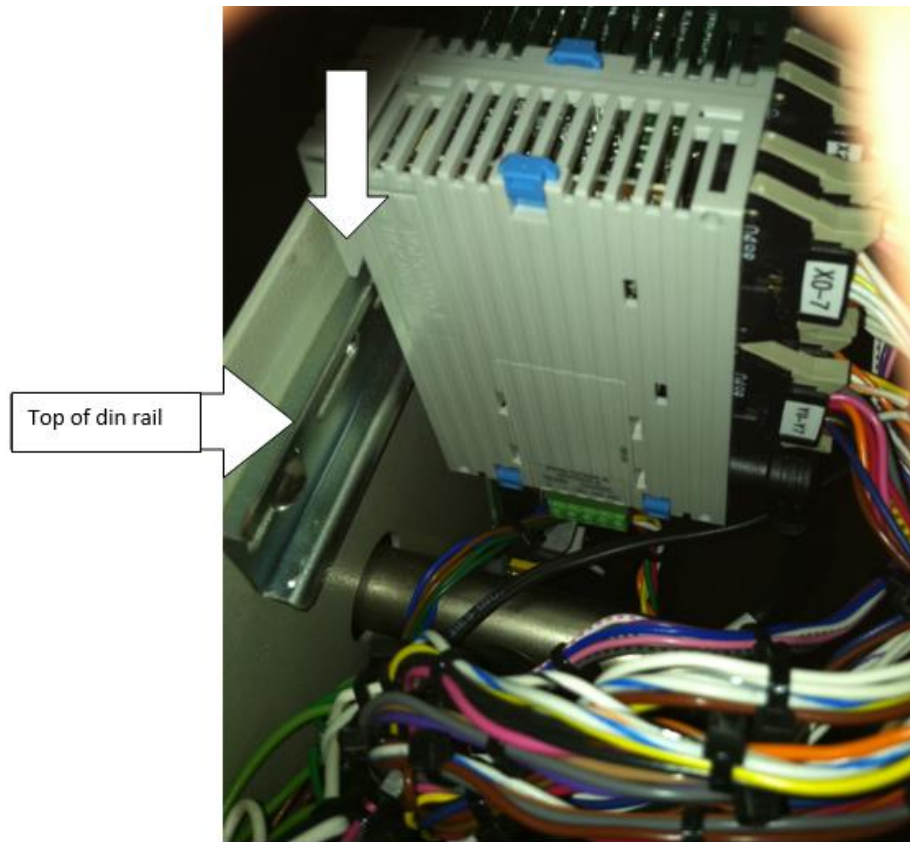


Carefully unplug the battery, and replace.



How To

Service Documents from APPI



After the battery is installed, slide the top of the PLC into the top of the DIN rail.



Gently push the blue tabs back in.



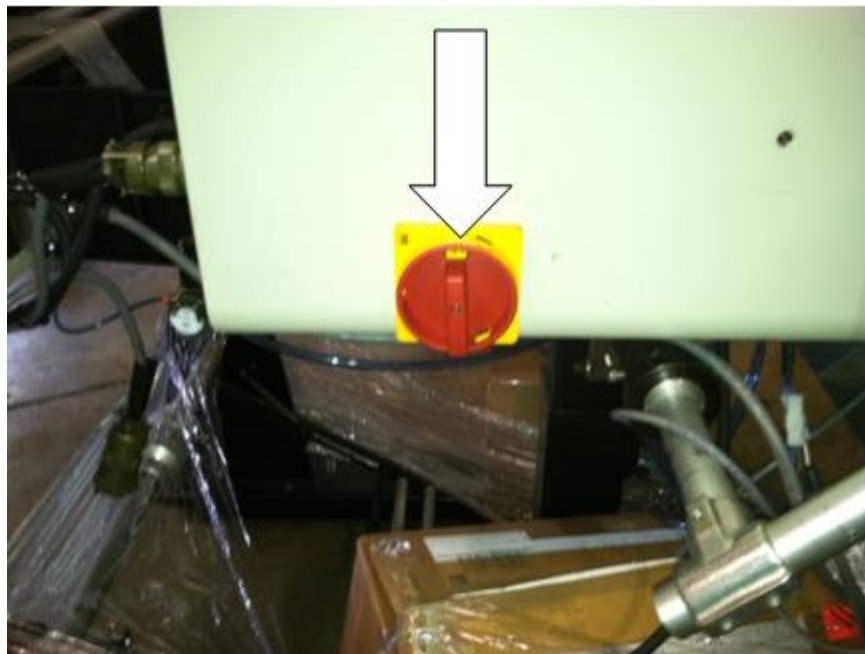
How To

Service Documents from APPI



Now, turn the Master Switch counter-clockwise to the “Off” position.

Be sure the Master Switch is in the “Off” position before putting the panel back on

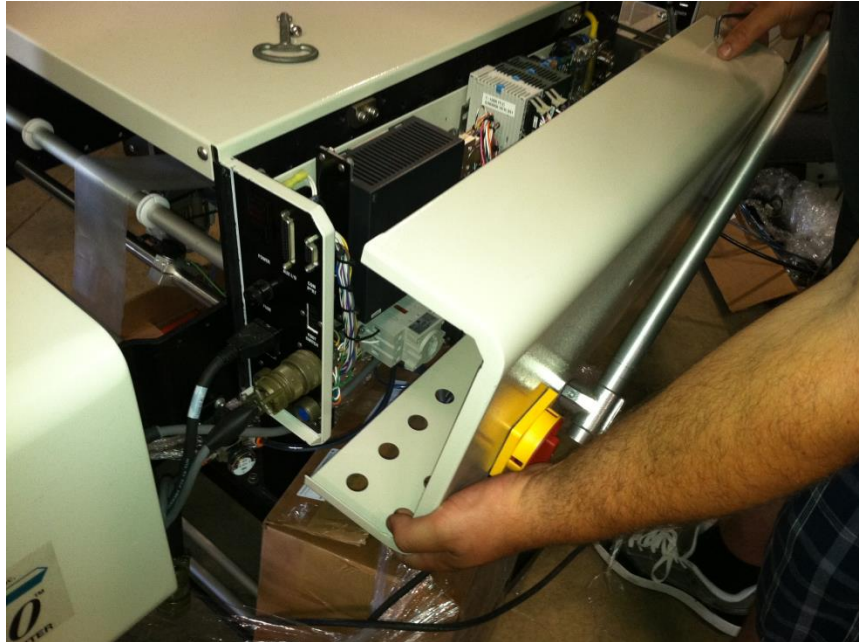




How To

Service Documents from APPI

Carefully put the bottom part of the panel in first, making sure the Master Switch is lined up.



Then push the top of the panel into place.





How To

Service Documents from APPI



Replace the button screw, and turn the Master Switch clockwise to the “On” position.