



# How To

## Service Documents from APPI

**Document: #HT000072**

**Document Title: Install LabelView 9**

**Product(s): T-1000**

**Procedure:**

Insert CD into CD ROM DRIVE, the window shown below will come into view. Insert the USB License Key into a USB Port, then press the Down Arrow Key.





# How To

## Service Documents from APPI

Select a Language then press “OK”.



Click “Next”

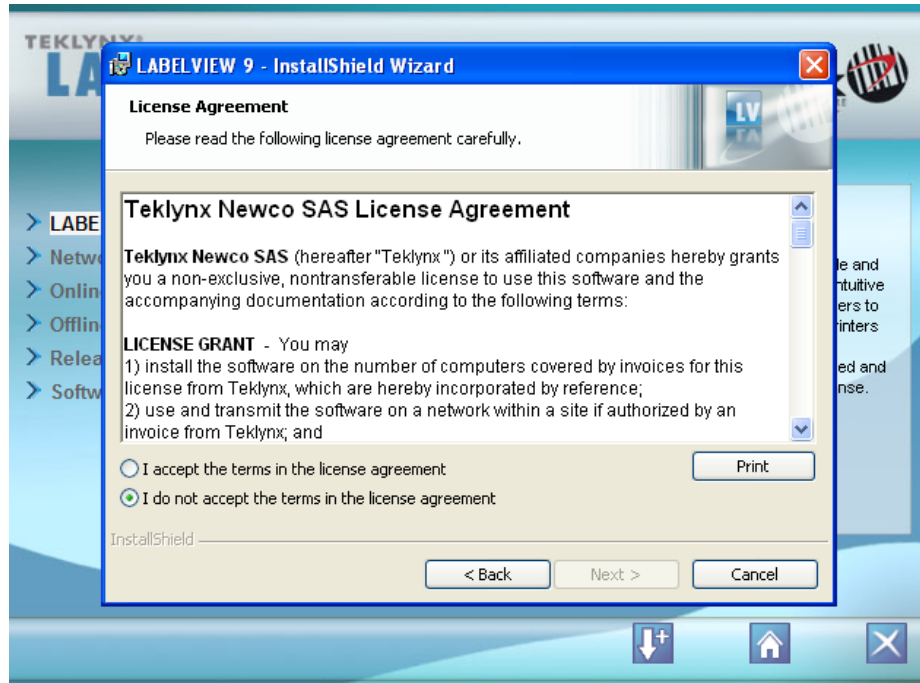




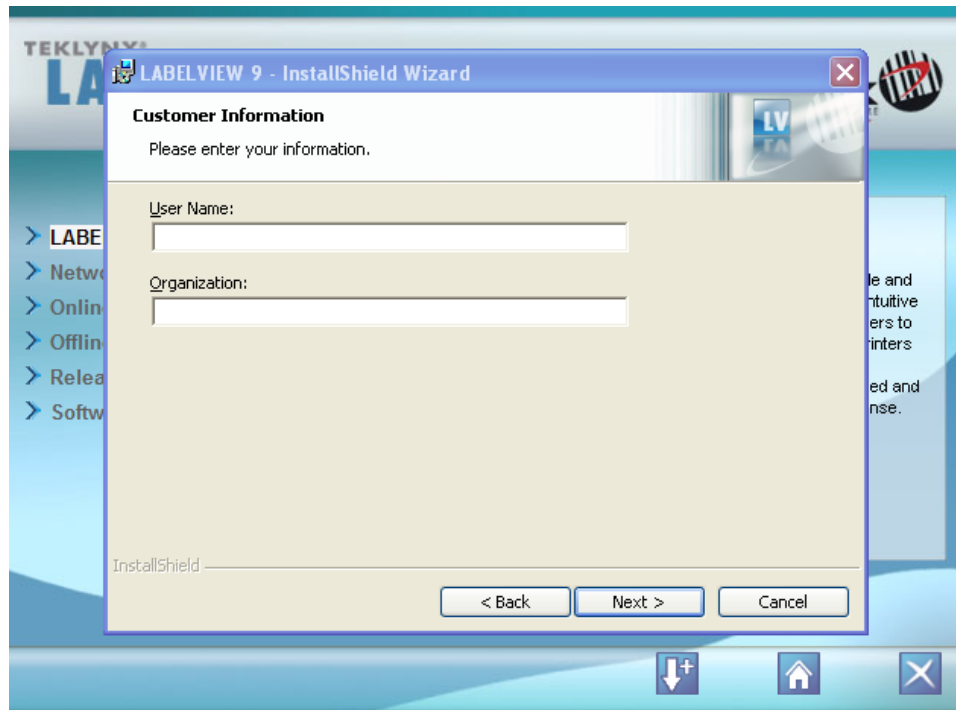
# How To

## Service Documents from APPI

Click "I Accept the Terms ", and click "Next".



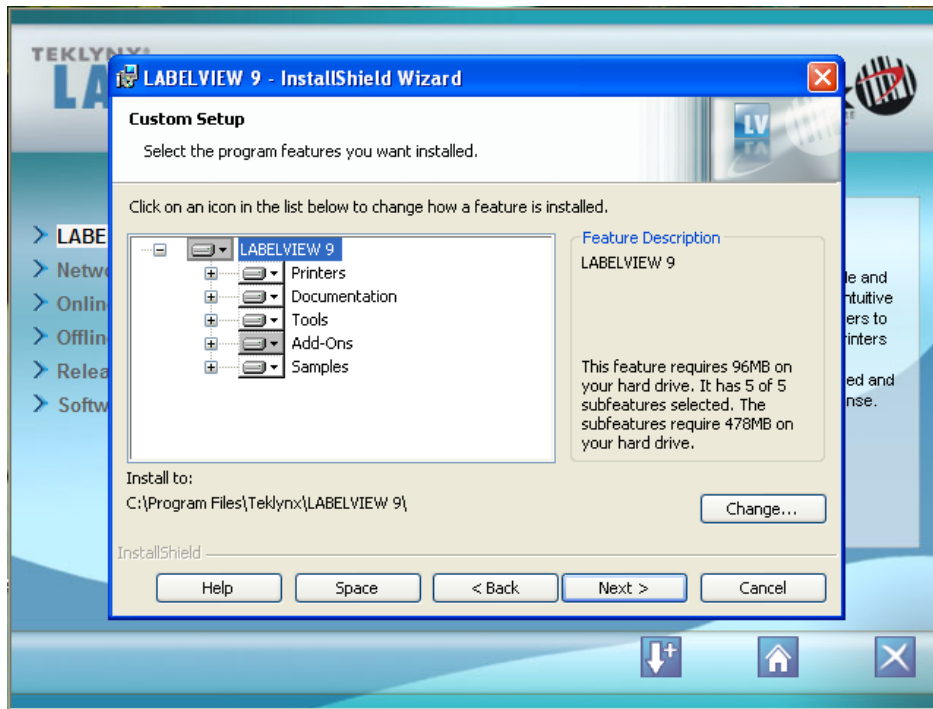
Type in your name (not required), Click "Next".



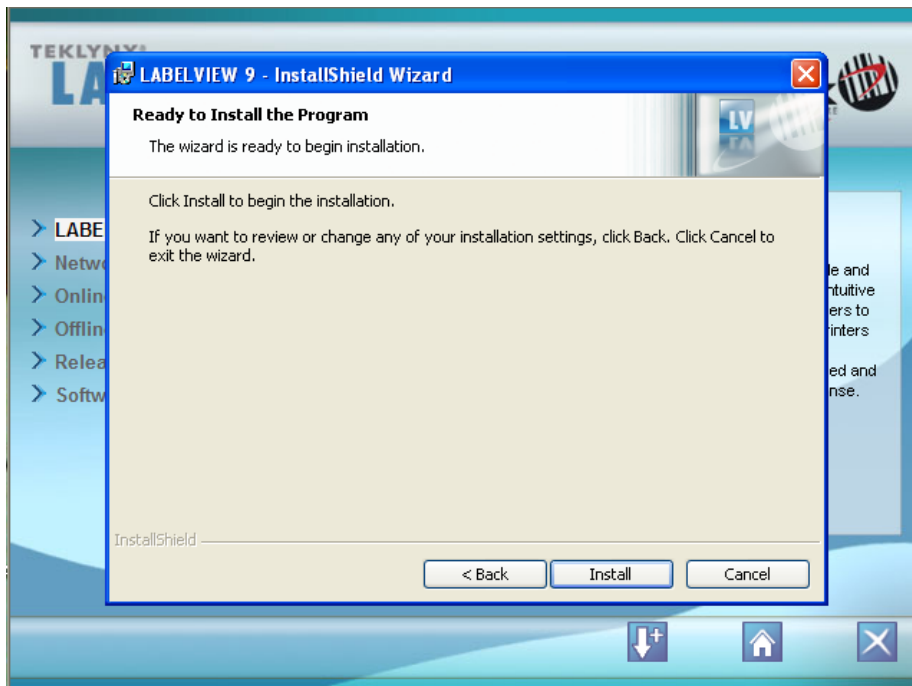


# How To

## Service Documents from APPI



Click "Install"





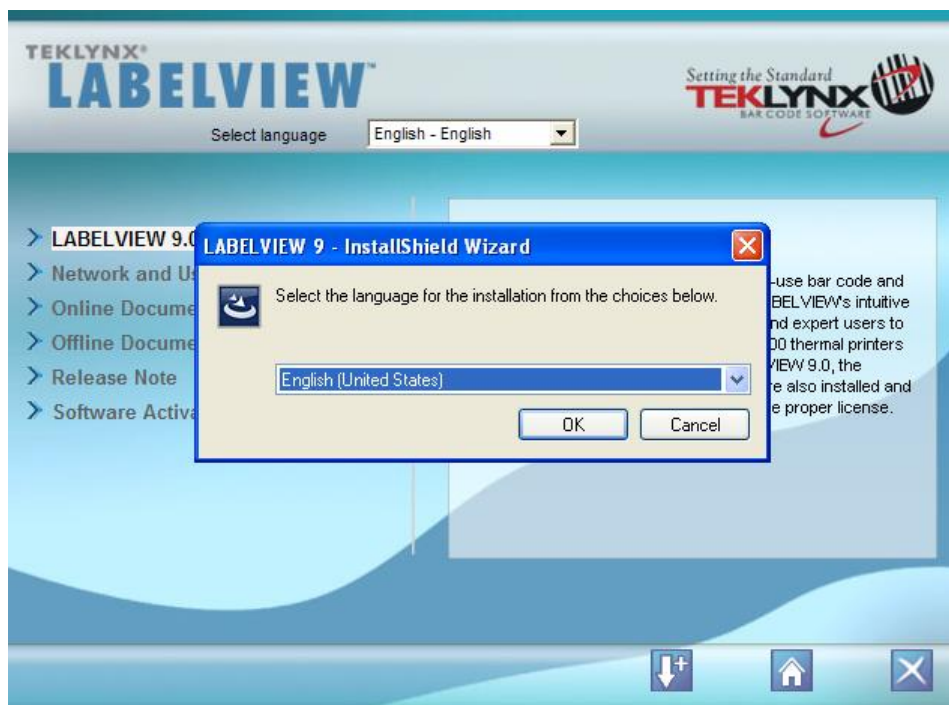
# How To

## Service Documents from APPI

Click “Finish”



This Window will now be shown. Select “Language” then press “OK”





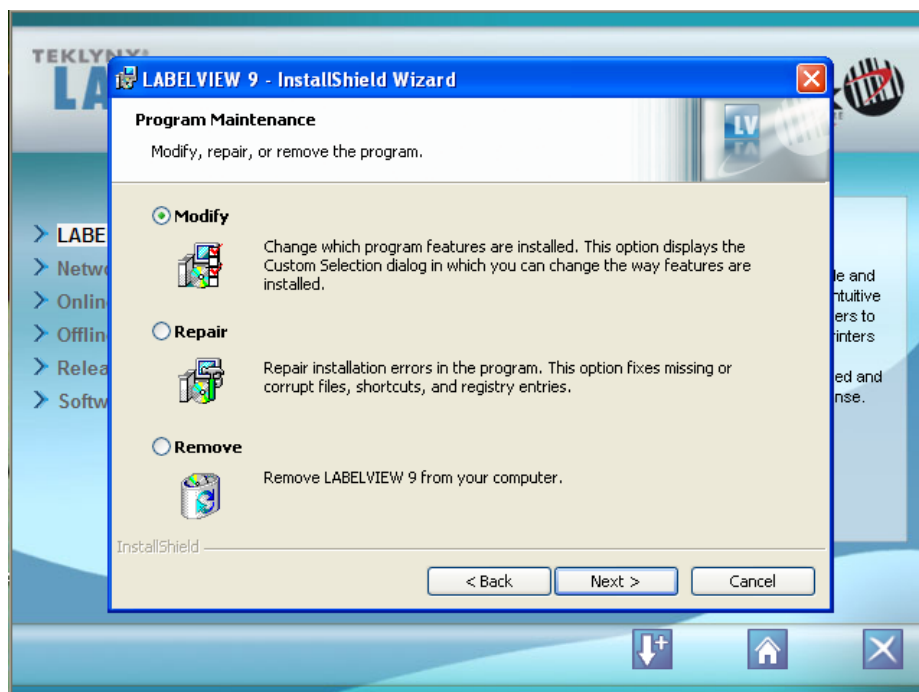
# How To

## Service Documents from APPI

Click "Next"



Select "Modify", Click "Next"

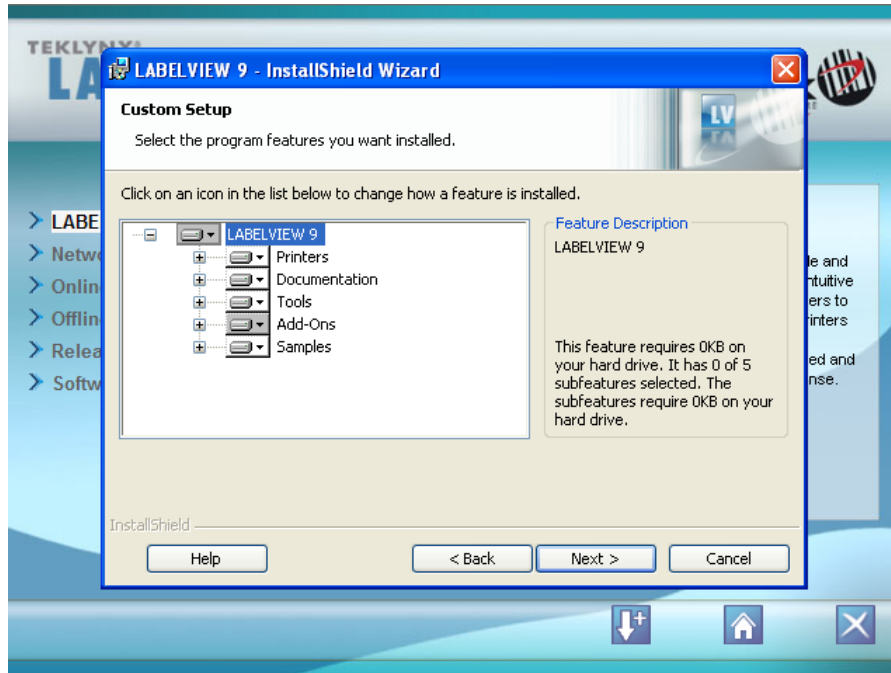




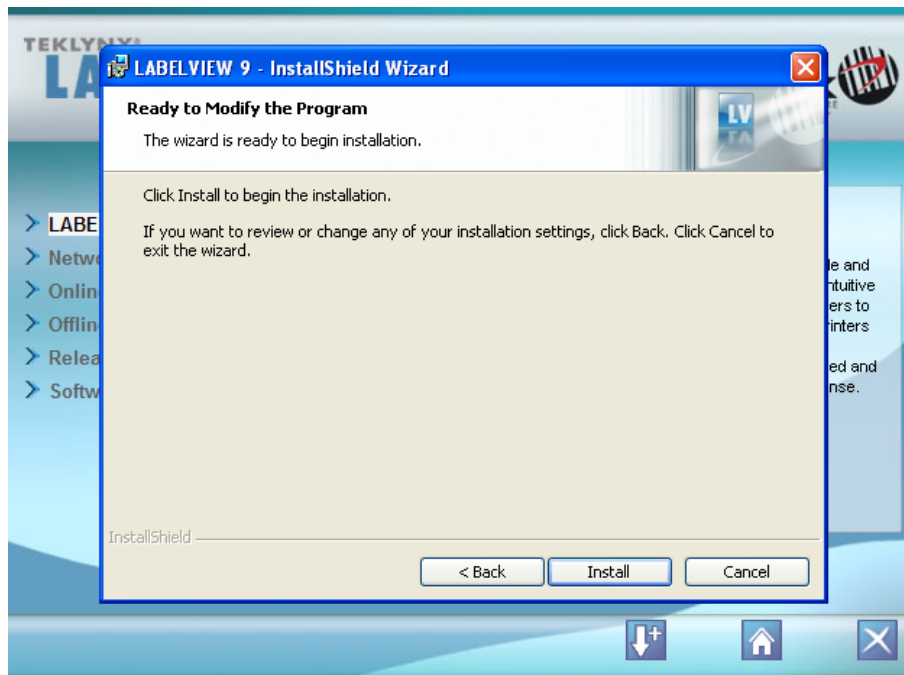
# How To

## Service Documents from APPI

Click "Next"



Click "Install"





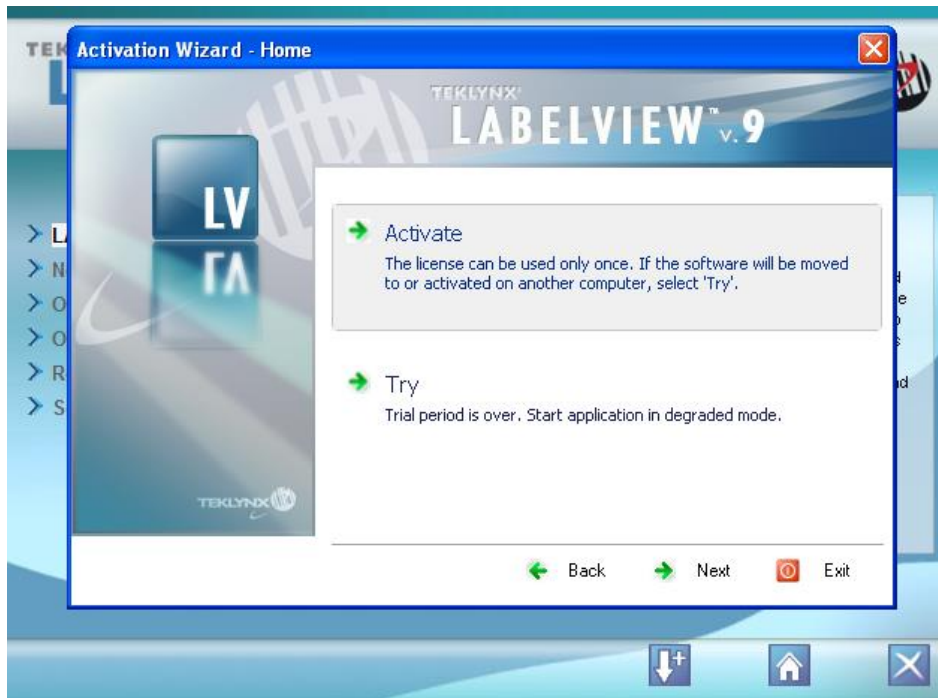
# How To

## Service Documents from APPI

Click "Finish"



Click "Activate" and "Next"





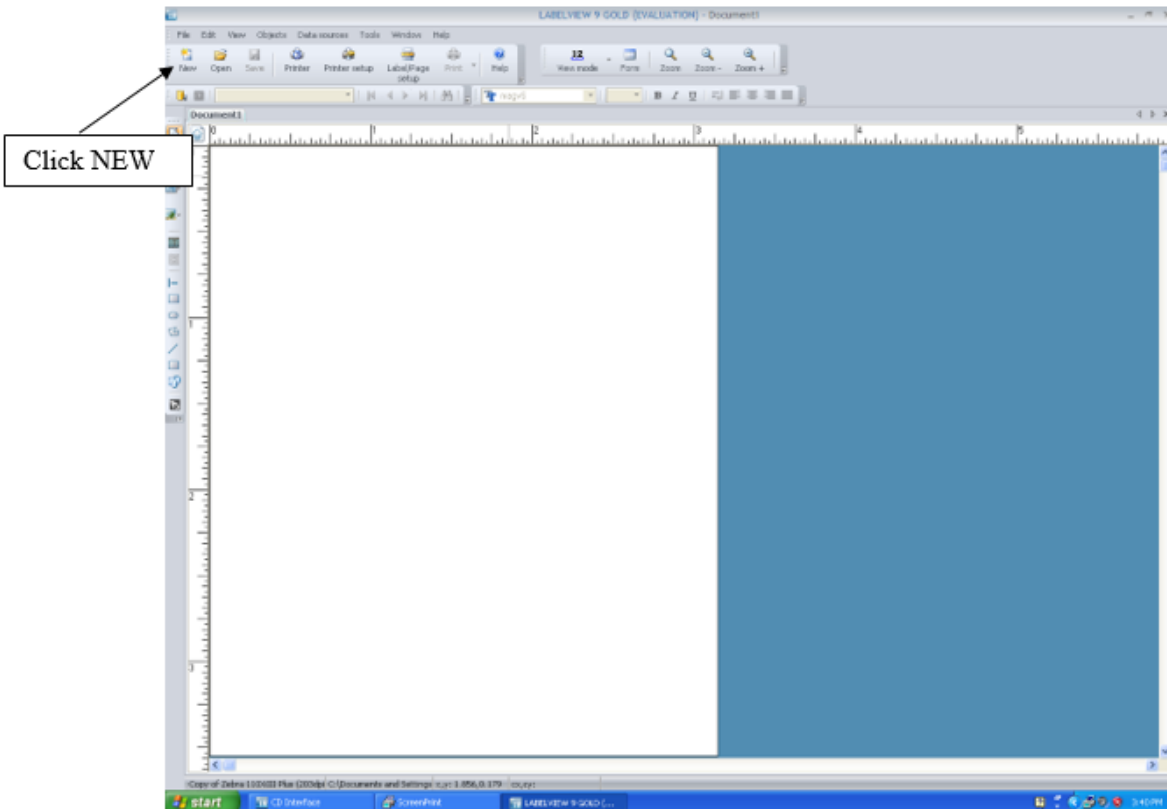


# How To

## Service Documents from APPI

Follow the Activate Procedure.

Under **“File”**, click **“New”**

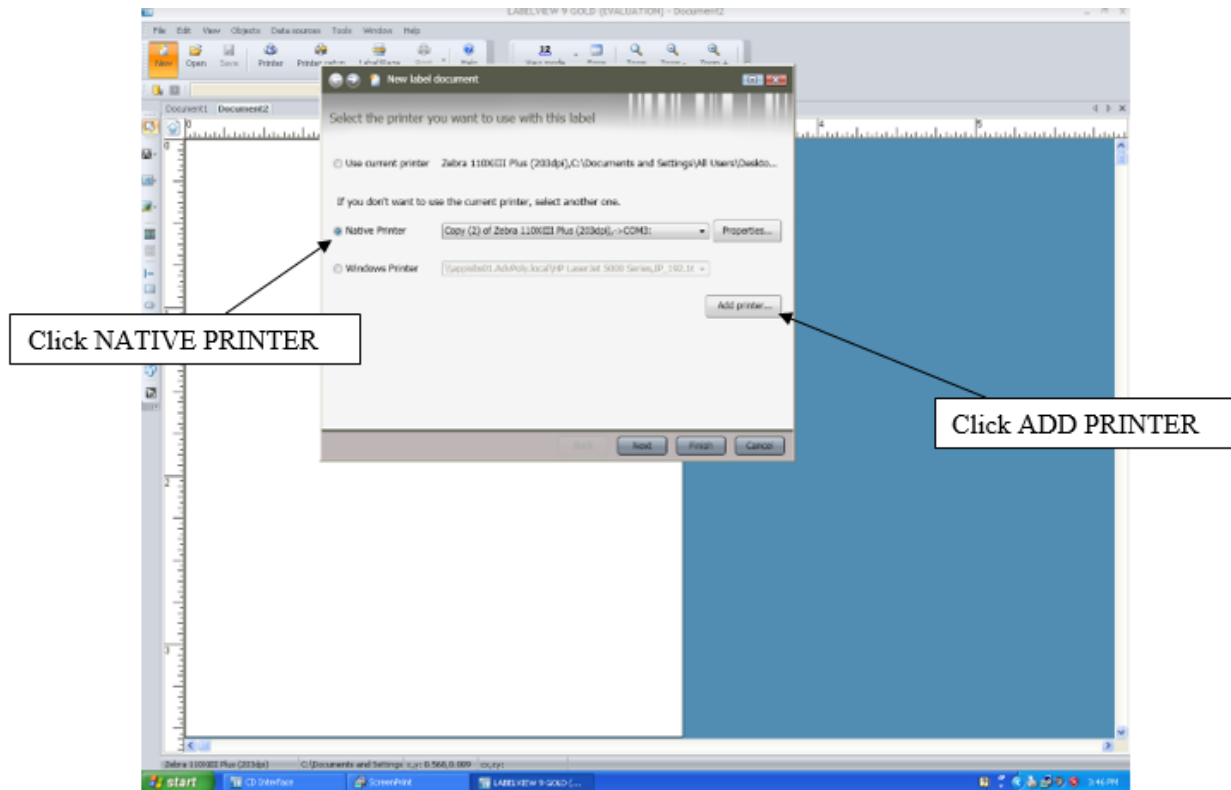


Change **“Use Current Printer”** to **“Native Printer”**

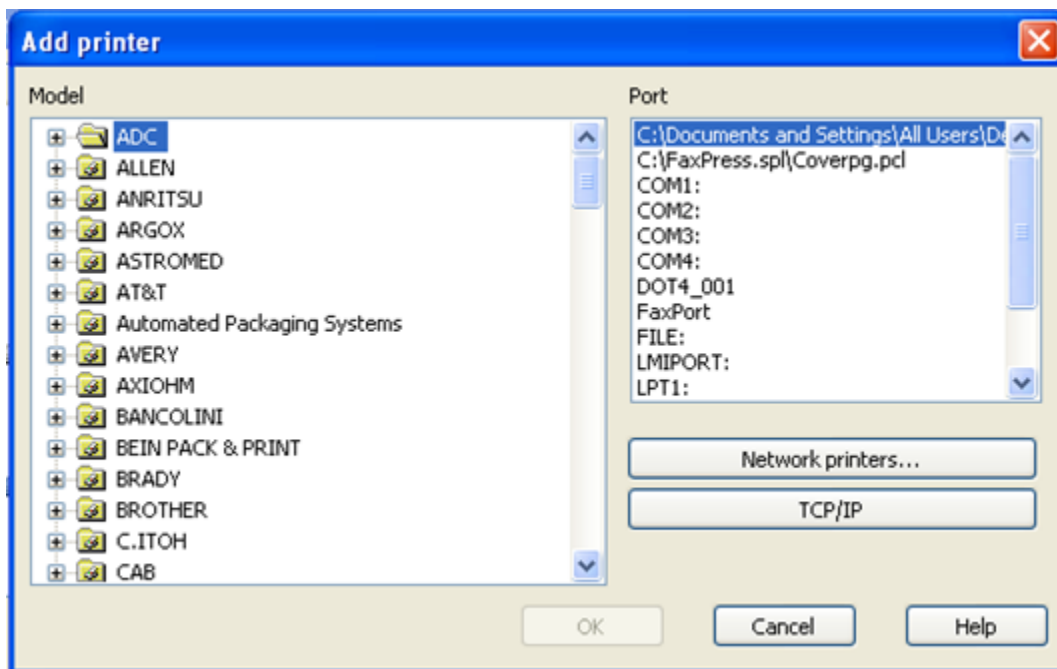


# How To

## Service Documents from APPI



Click "Add Printer"; "Add Printer" window opens.

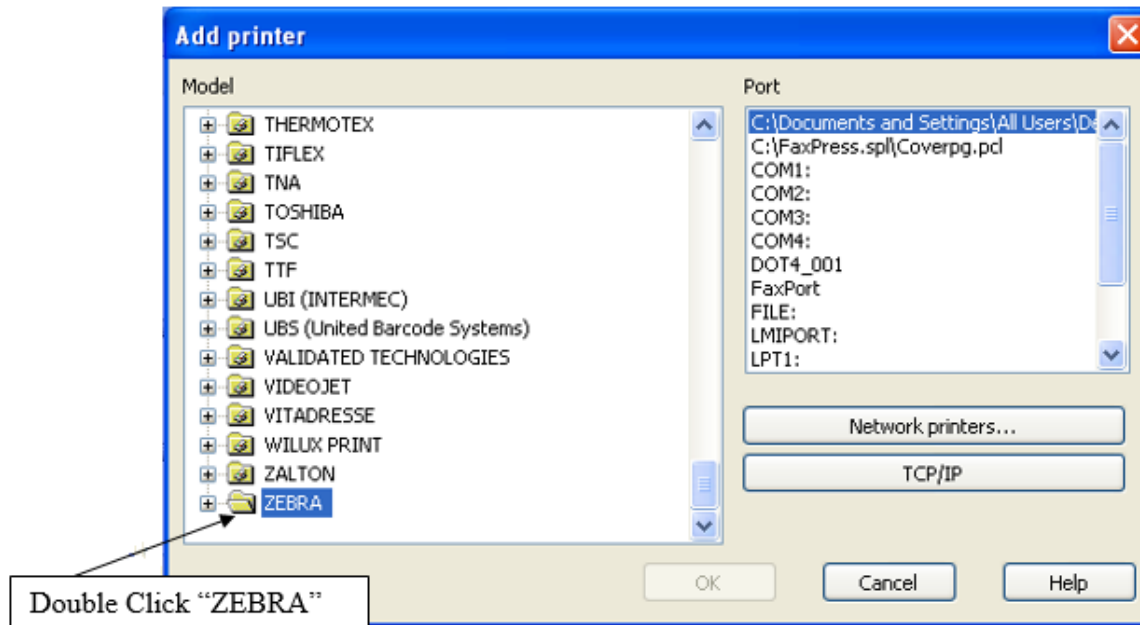




# How To

## Service Documents from APPI

Scroll Down and select “ZEBRA”, then double-click.

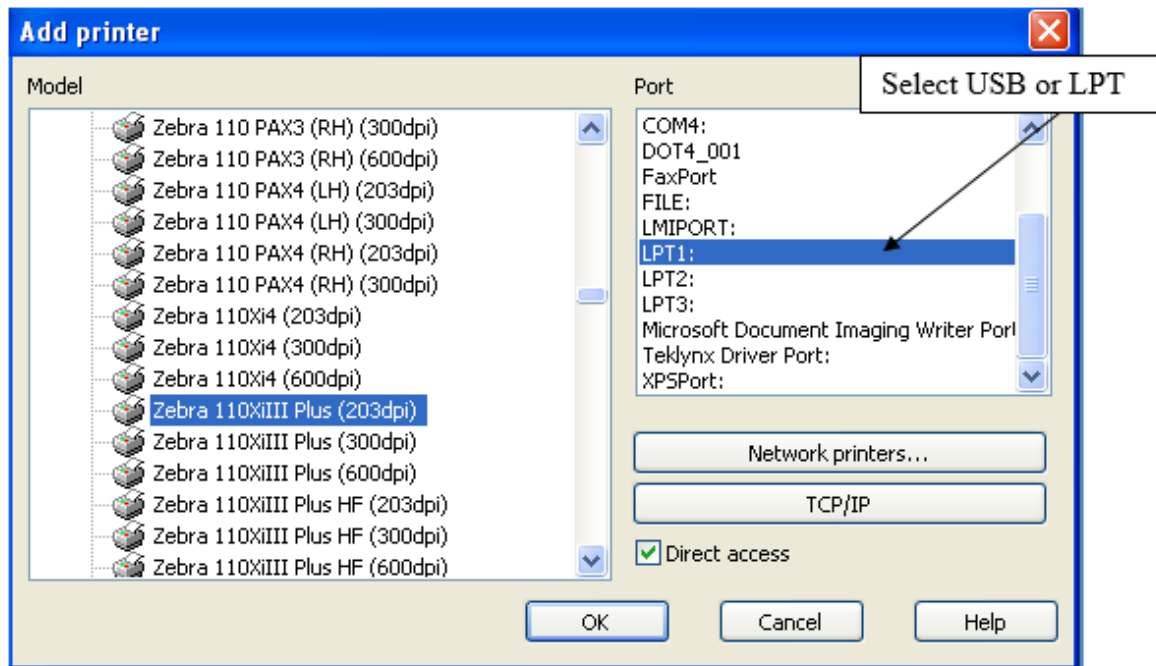


With the Zebra Folder open select “Zebra 110XIII Plus (203dpi)” or “Zebra 110XIII Plus (305dpi)”, depending on your printer.



# How To

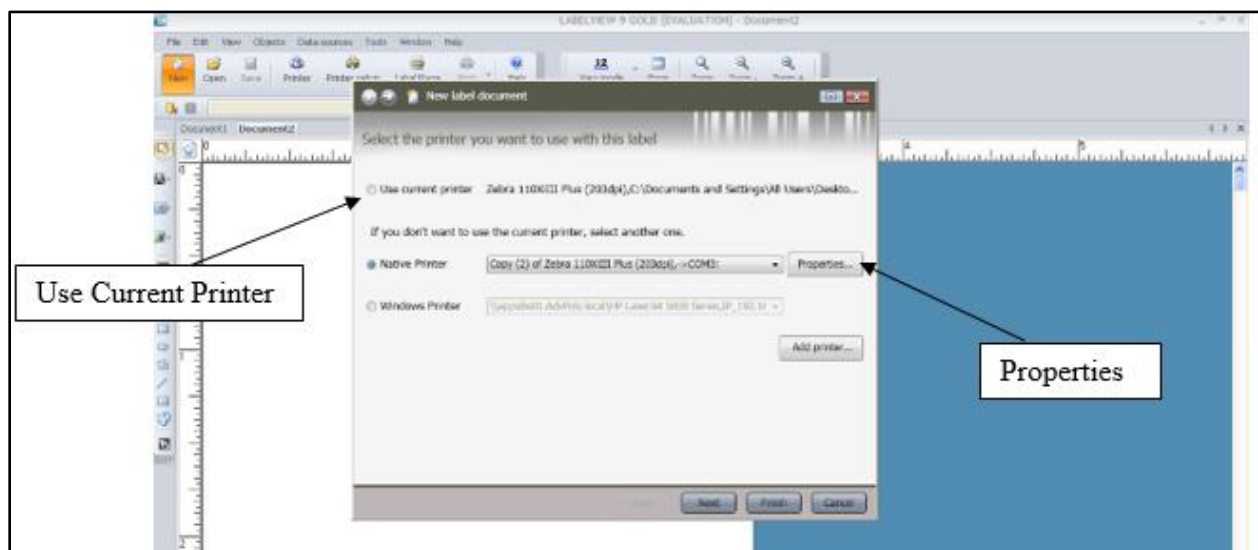
## Service Documents from APPI



**Port Setting:** Select USB if you are using a USB port. Select LPT if you are using a Parallel port.

Click **“OK”**

After clicking **“OK”**, the **“New Label Document”** window will appear.

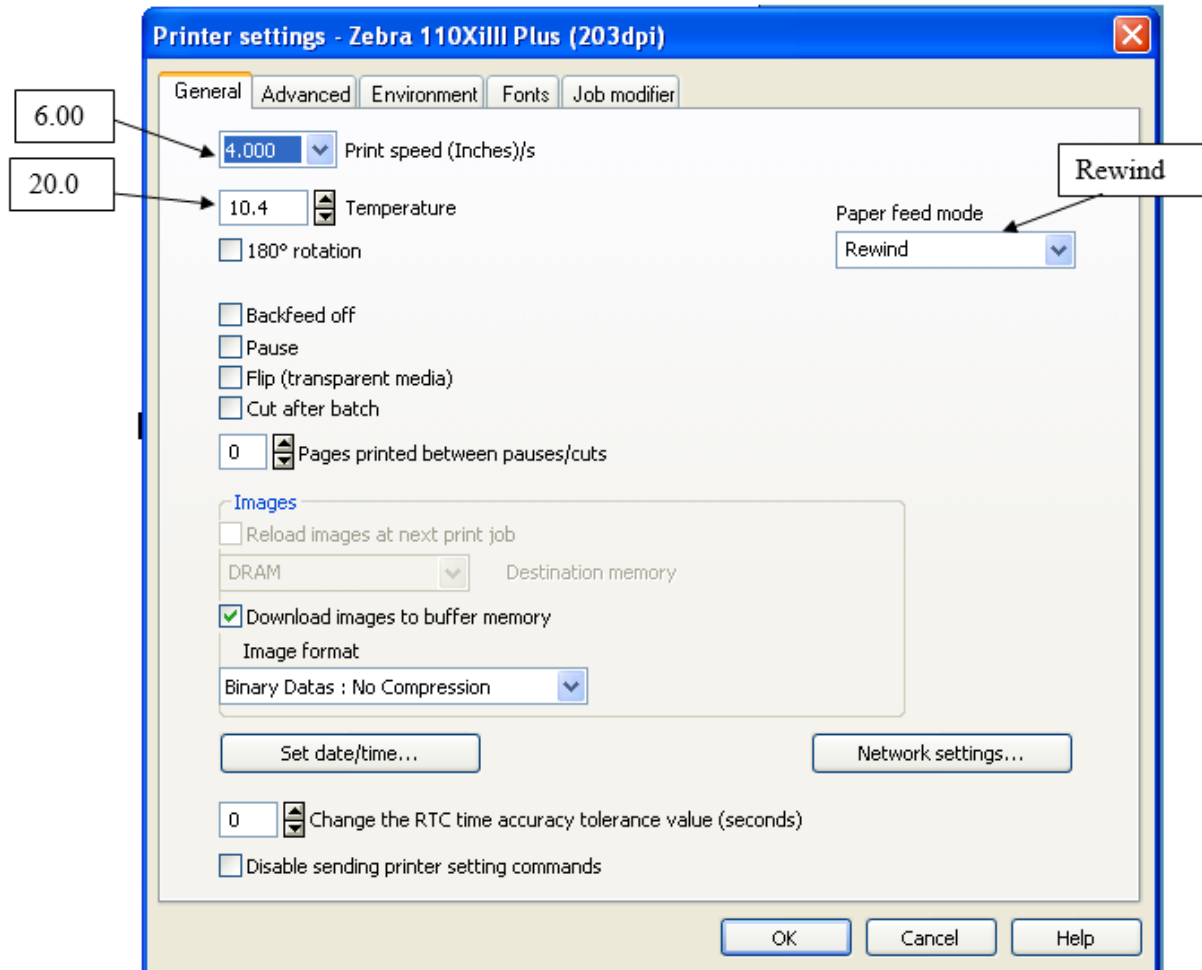


# How To

## Service Documents from APPI

Click on "Use Current Printer" which will be "Zebra 110XI III (203dpi)" or "Zebra 110I III (305dpi)" on Port\_\_\_\_\_. This will be highlighted in blue.

Now "Click on PROPERTIES"

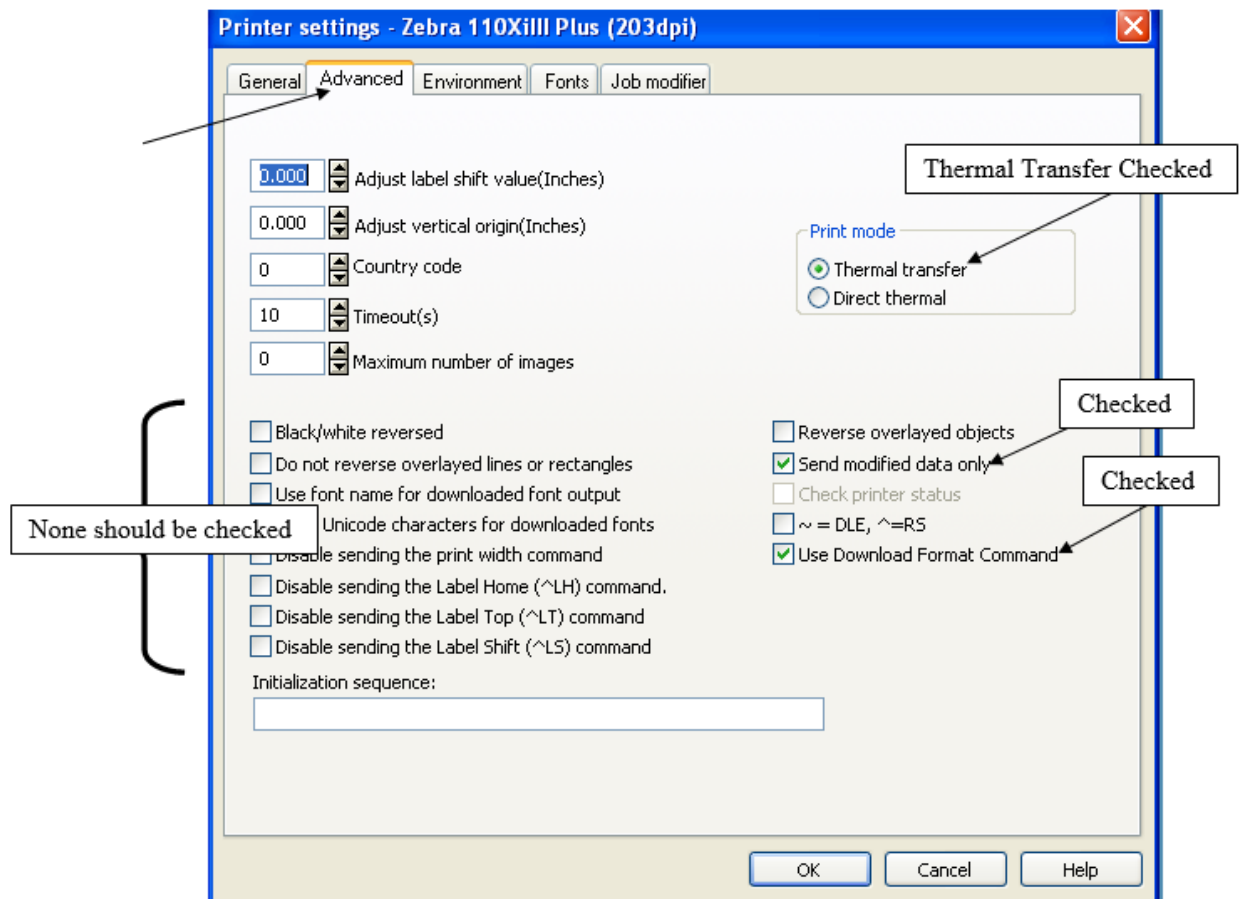


- Set "PRINT SPEED" to 6.
- Set "TEMPERATURE" to 20
- Set "PAPER FEED MOD" to "REWIND"
- Click the "ADVANCED" tab on top



# How To

## Service Documents from APPI



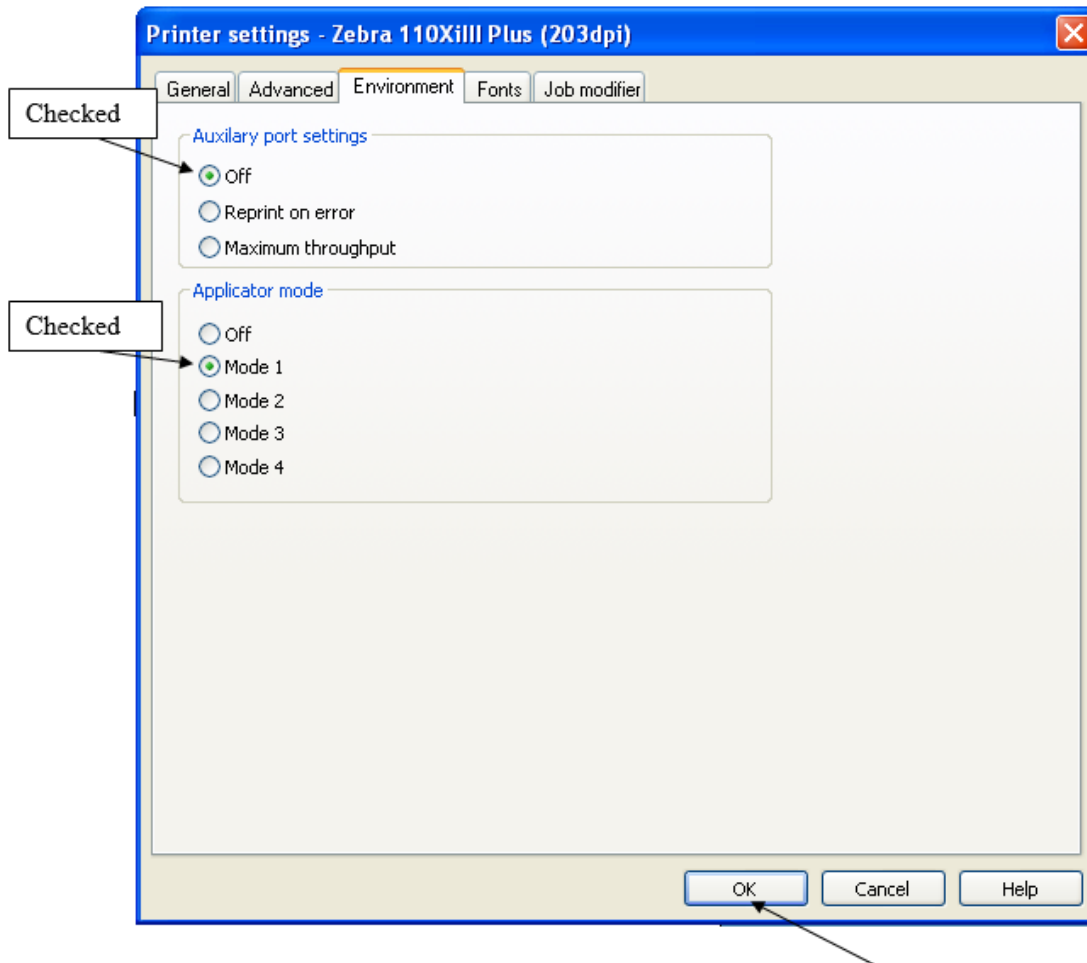
- Uncheck “Disable Sending the Label Top”
- Uncheck “Disable Sending the Label Shift”
- Click On “Send Modified Data Only”
- Be sure “Use Downloaded Format Command” is checked.
- PRINT MODE “Thermal Transfer”



# How To

## Service Documents from APPI

Click on the “Environment” Tab



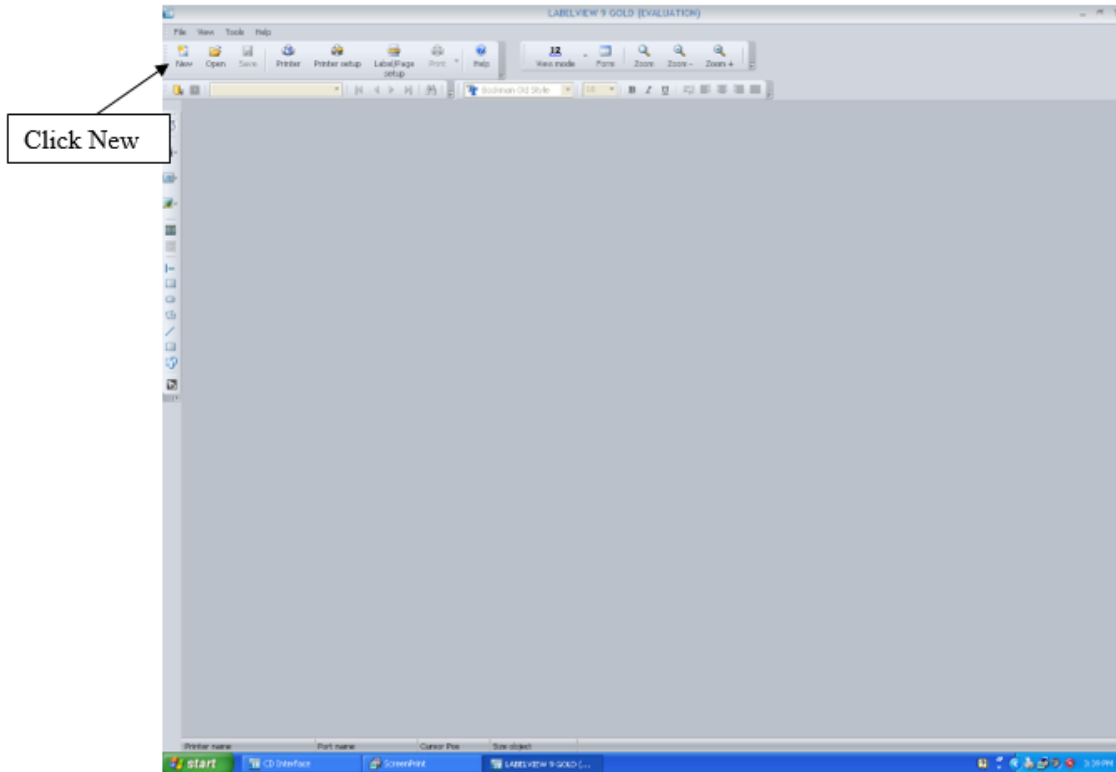
- Auxiliary Port Settings “OFF”
- Applicator Mode “MODE 1”
- Click OK, this will take you back to NEW LABEL “DOCUMENT”
- Now Click “FINISH”



# How To

## Service Documents from APPI

Create Your Label:



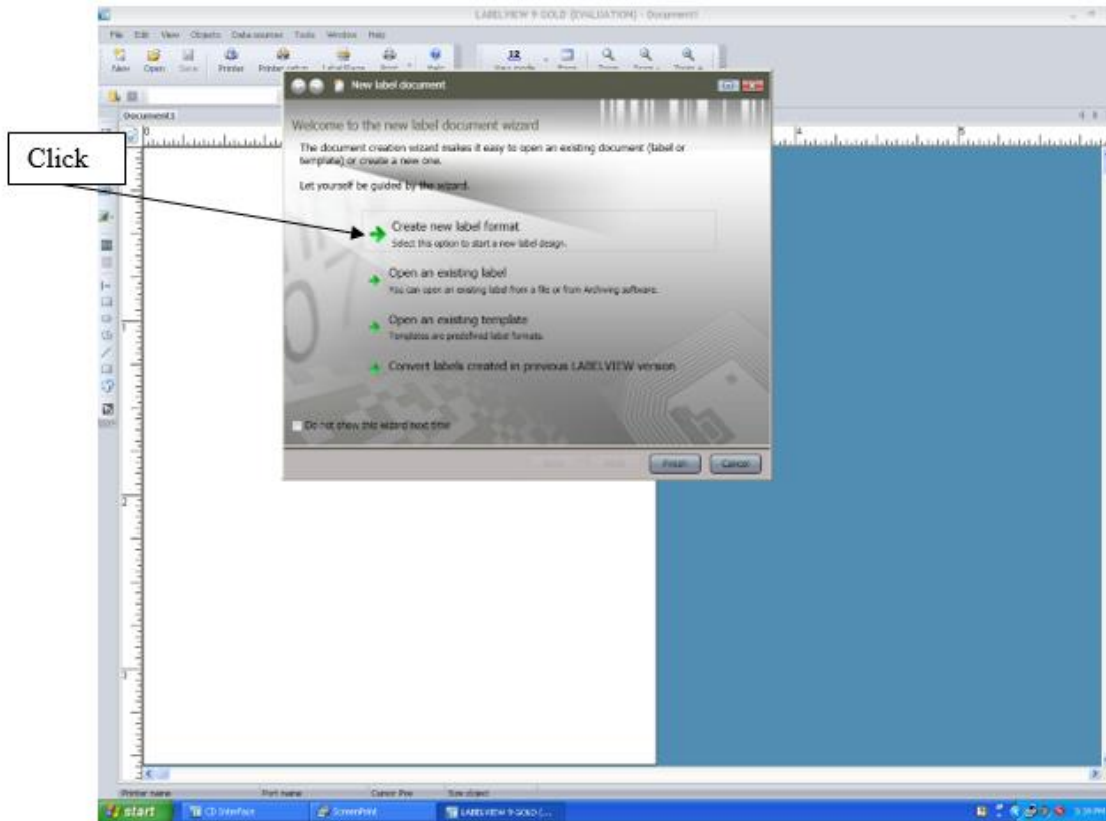
Click **“New”** icon



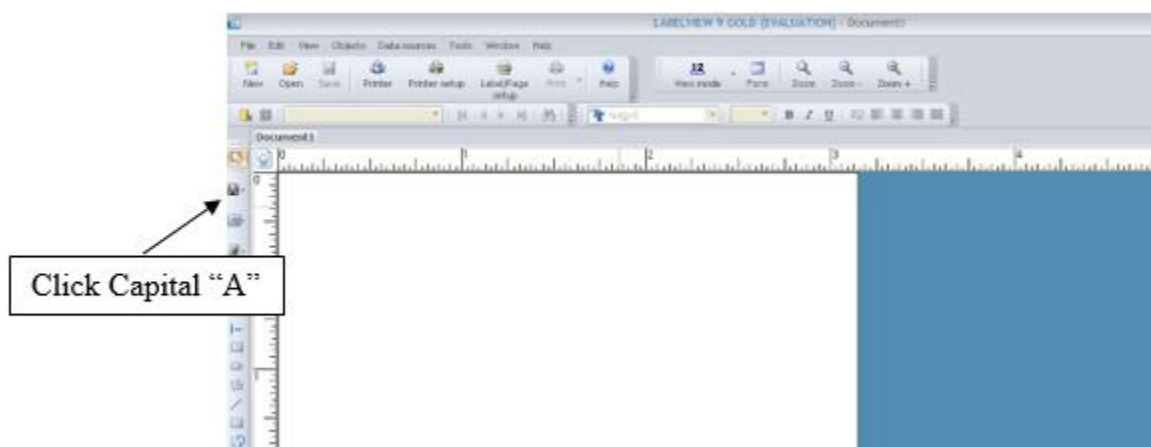


# How To

## Service Documents from APPI



Click "CREATE NEW LABEL FORMAT"

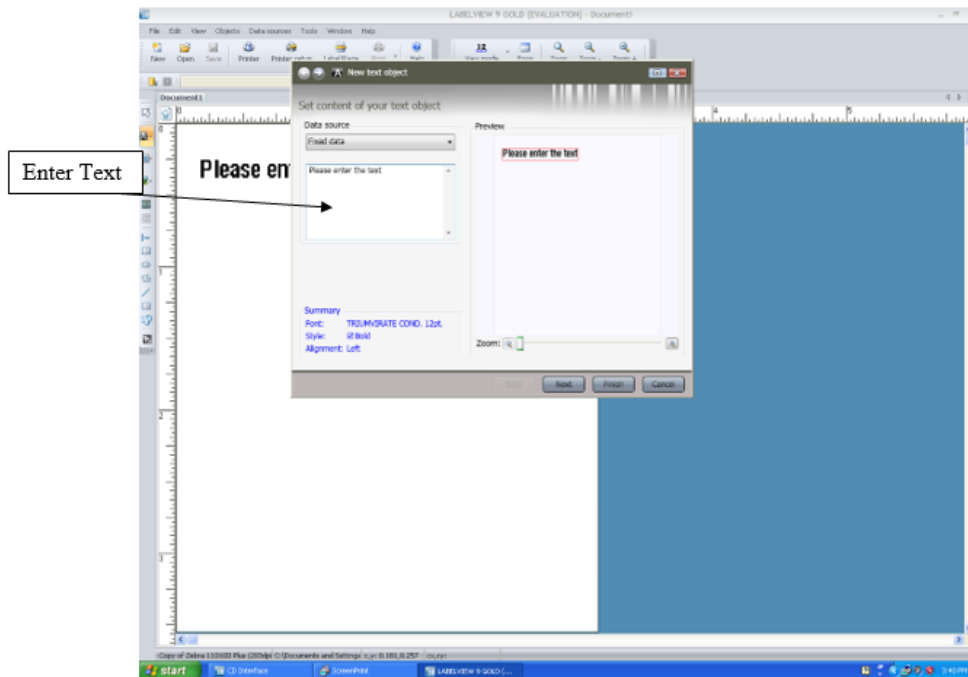


Click the capital "A" Add Text icon

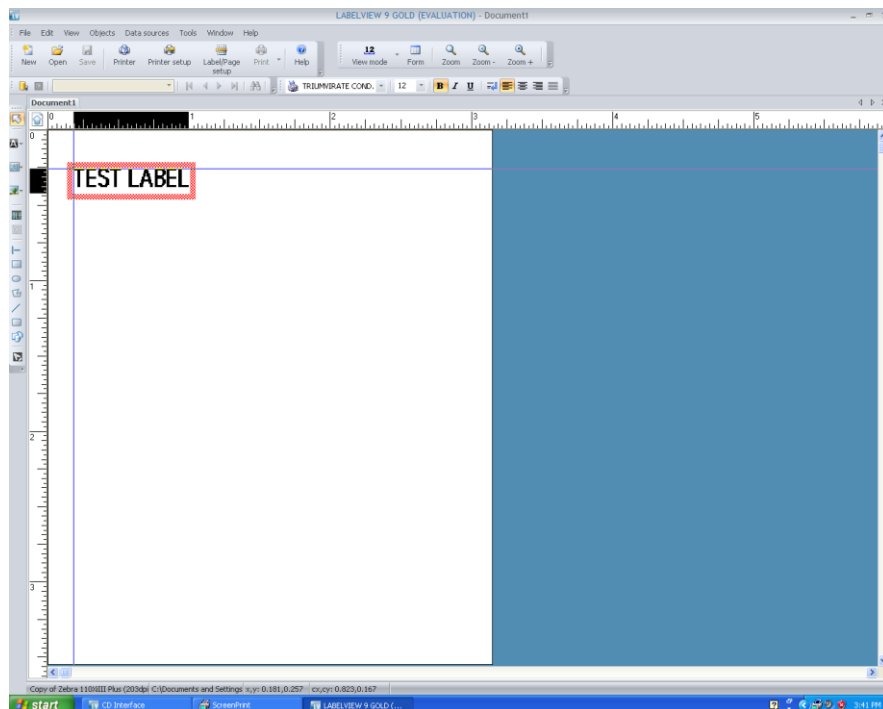


# How To

## Service Documents from APPI



Enter the Label information or the word “TEST” into Text Field. Click “NEXT”

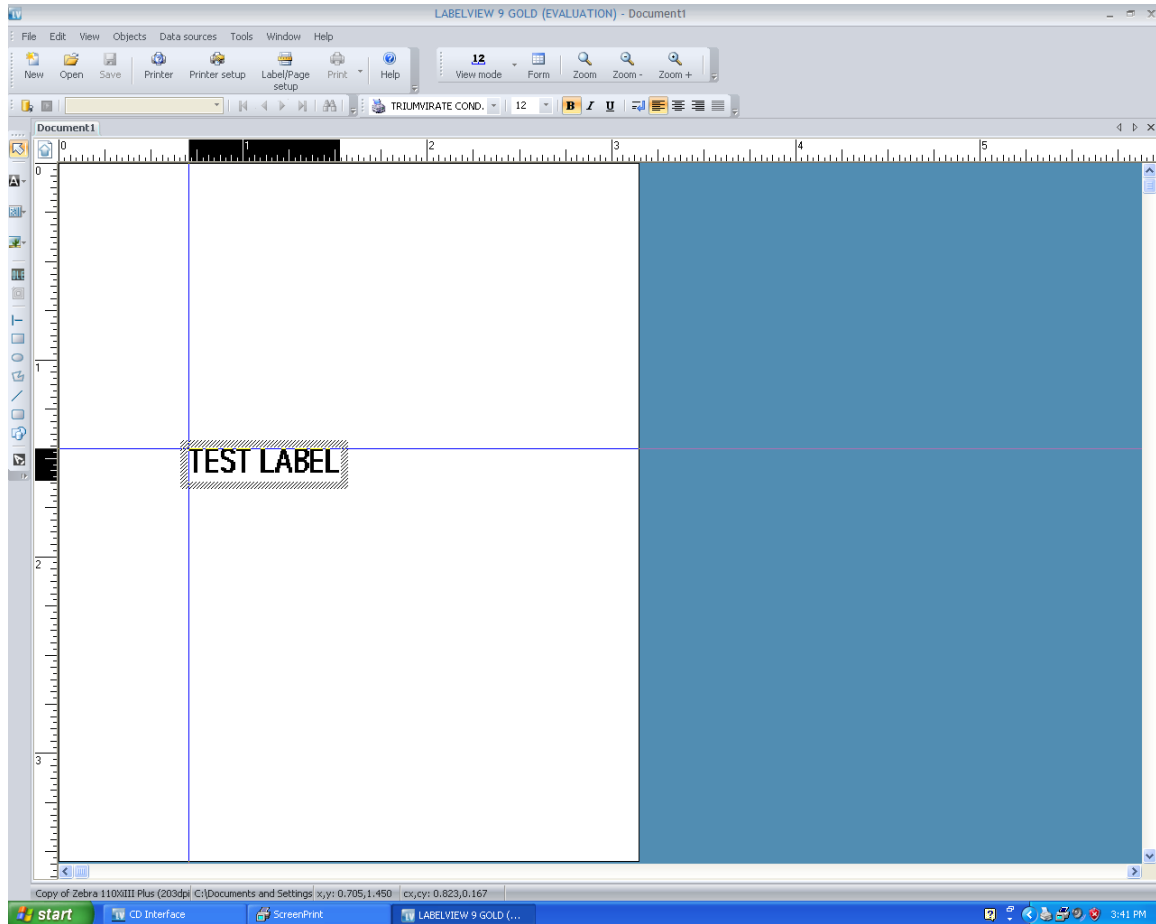


The TEXT can be moved by dragging it to the desired position.



# How To

## Service Documents from APPI

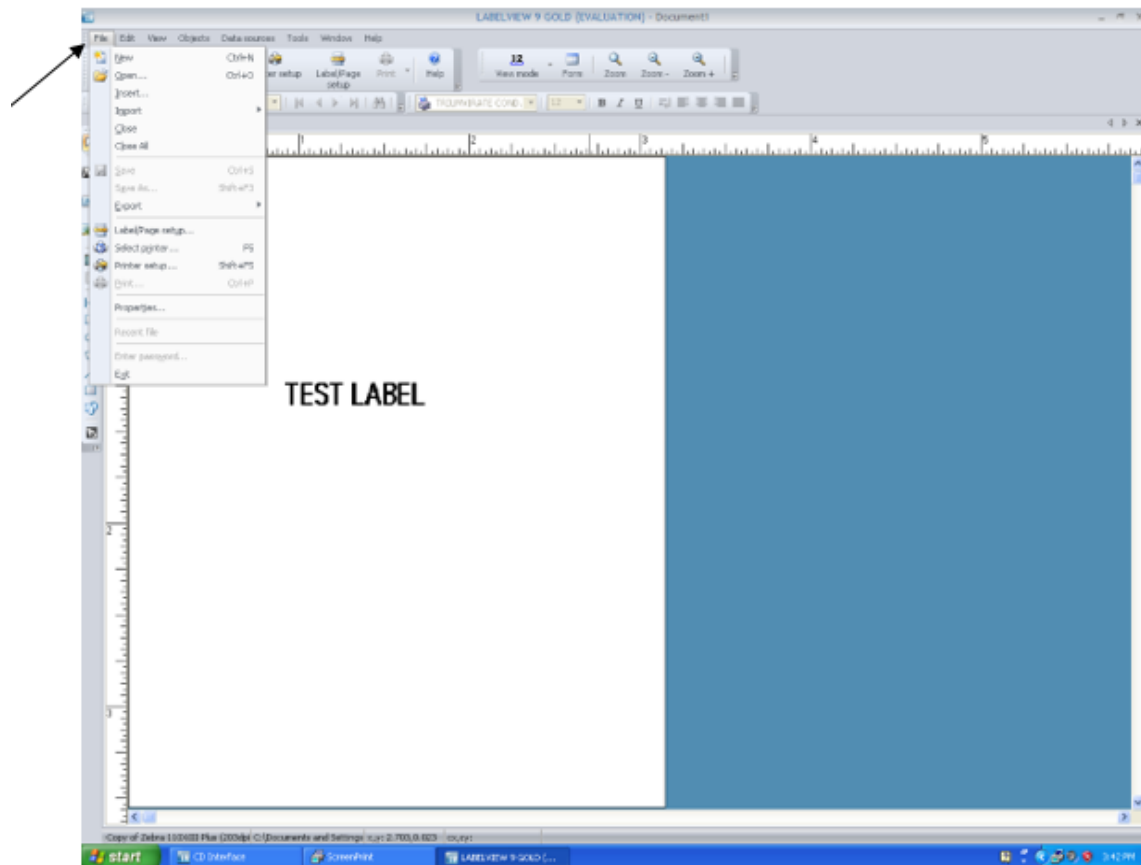


Click on the blank area of the label to lock its position.



# How To

## Service Documents from APPI



Click on **“File”**, click **“Save As”** test label.

You can use this label as a template for future labels.