

How To

Service Documents from APPI

Document: #HT000152

Document Title: Change from ZDesigner/Seagull to LabelView Printer Settings

Product(s): LabelView

Introduction:

APPI's printers are customized Zebra printers. The ZDesigner driver is Zebra's own printer driver, and works fine for most applications. It is also the chosen driver for labeling suites such as Loftware, Nicelabel, Easylabel, Prisym, etc. For some applications, especially BarTender, Seagull Scientifics Zebra driver can be used.

The ZDesigner or Seagull driver should be installed, because this will "lock down" the USB port. Windows will recognize the printer on the same USB port even if the printer is unplugged and plugged into another physical port on the computer.

APPI sells and supports LabelView, which has its own internal printer driver. This internal driver is a little easier to set up, and offers easy access to certain features of the Zebra printer.

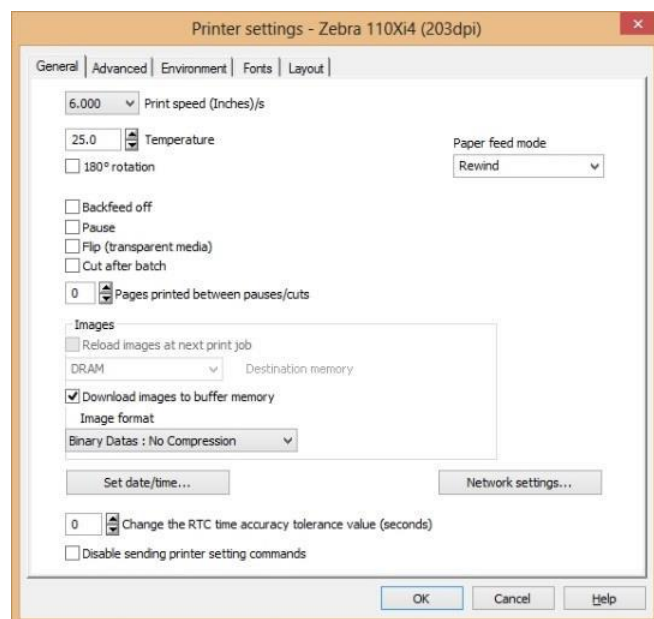
This HOW TO shows how to identify and, if necessary, change the printer setup in LabelView.

Procedure:

Identifying Printer Setup

When opening a label in LabelView, and clicking "Printer Setup", you should get this screen:

This is LabelView's internal printer setup.



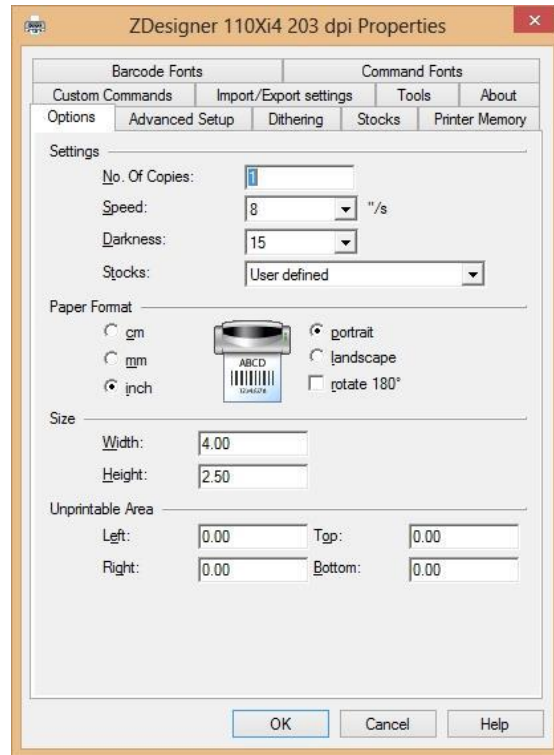


How To

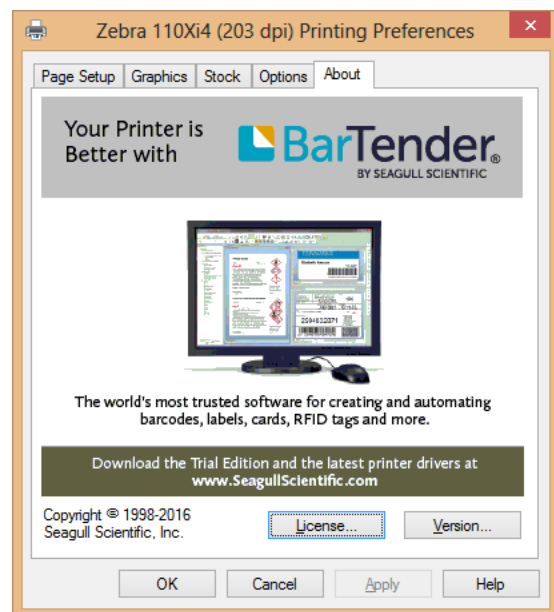
Service Documents from APPI

If you are getting one of these screens instead, you can change over to LabelView's internal printer settings.

The top screen is ZDesigner's printer settings, the bottom one is Seagull Scientific's printer driver settings.



If either one is installed, they should be set up properly, even if they are not being used.



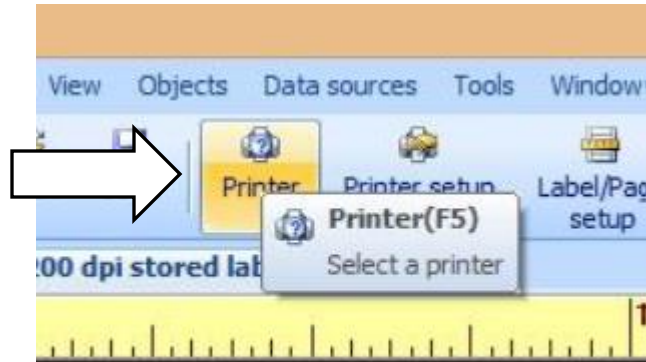


How To

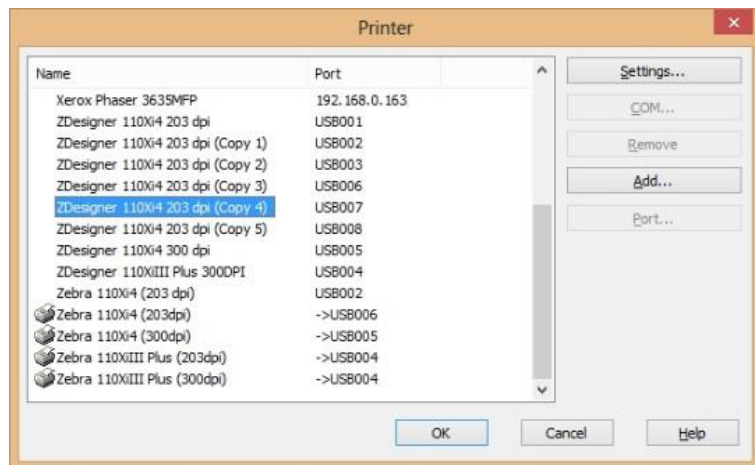
Service Documents from APPI

Change to LabelView's Internal Driver Settings

Click "Printer".



Check what the highlighted printer says:



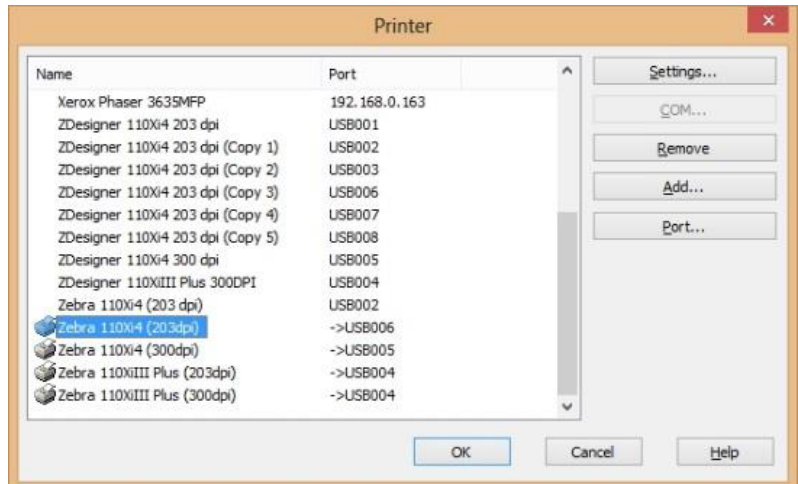


How To

Service Documents from APPI

If ZDesigner is highlighted, click a corresponding Zebra instead. If no corresponding Zebra exists, see page 4 on how to add one.

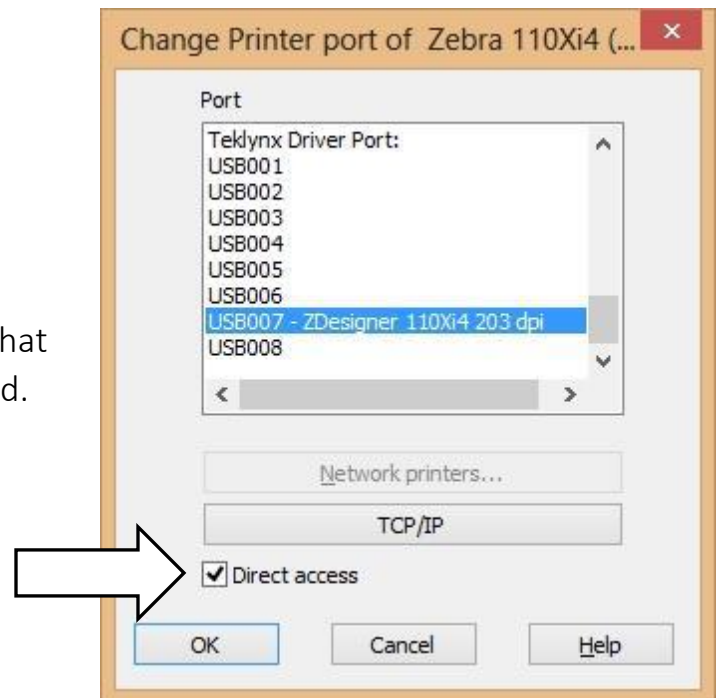
Click “Port”.



Scroll down to the active printer connection.

Most likely one of the ports will be marked as a ZDesigner port. Click that port. Direct access must be checked.

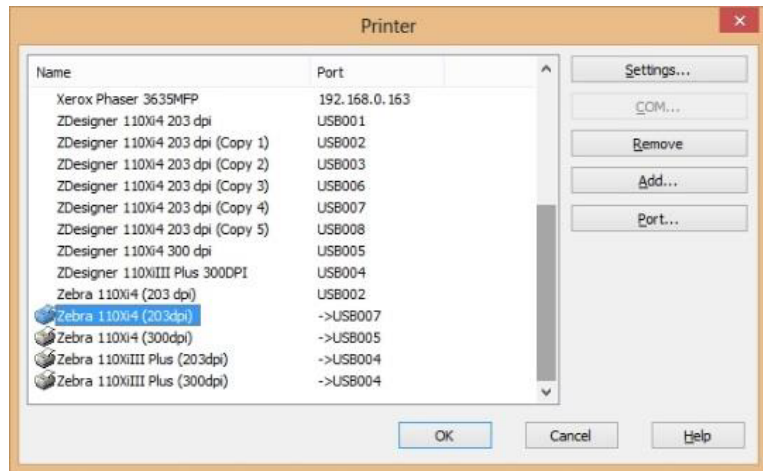
Click “OK”.



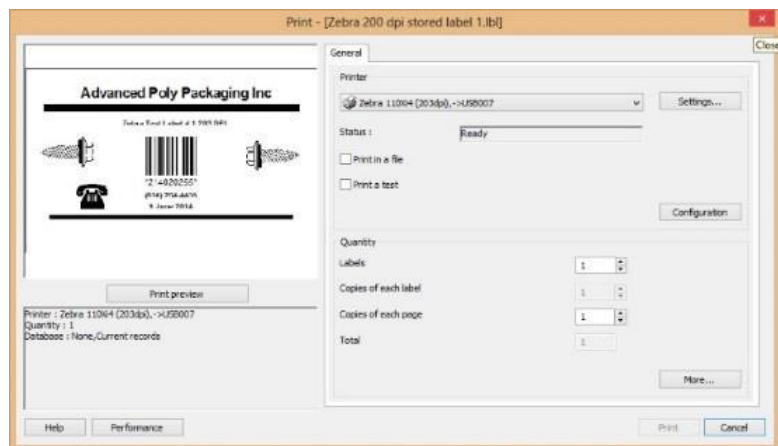
How To

Service Documents from APPI

This will make LabelView use the ZDesigner port, but NOT the driver.



Now you should have just a Zebra printer, on the right USB port, bypassing ZDesigner driver. Click "OK". When sending a print, your print screen should look like this:



One added advantage to this is that Status will say "Ready".

If it says "Communication Error", the printer is either unplugged or you have the wrong port.

Your printer settings can now be set up according to the Zebra Printer Port Settings (Help Doc 147).

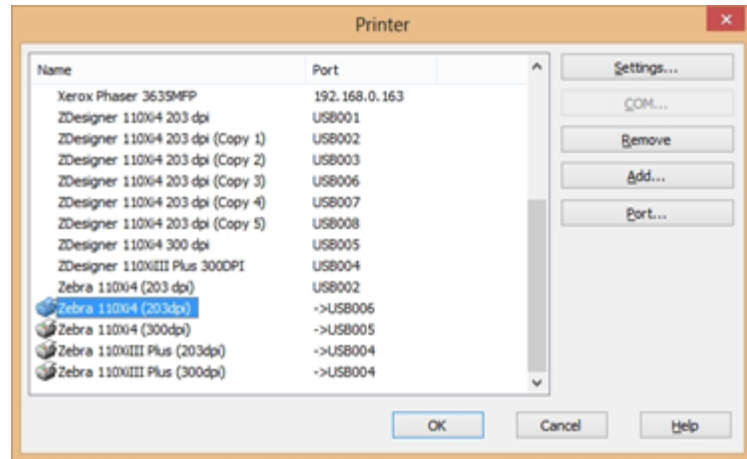


How To

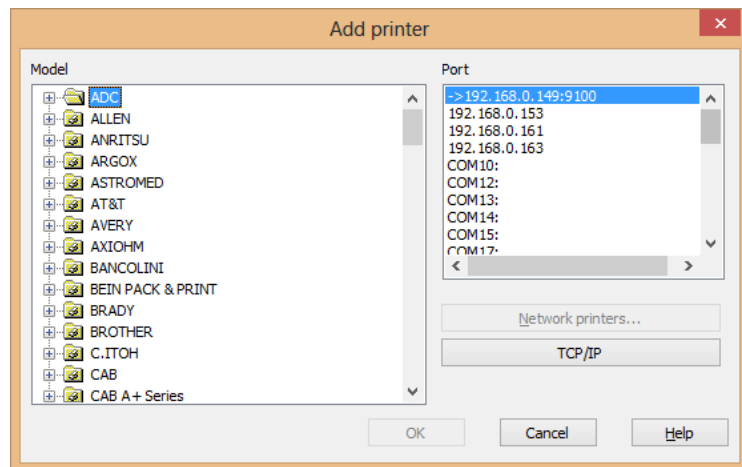
Service Documents from APPI

Add a Zebra printer

Click Add.



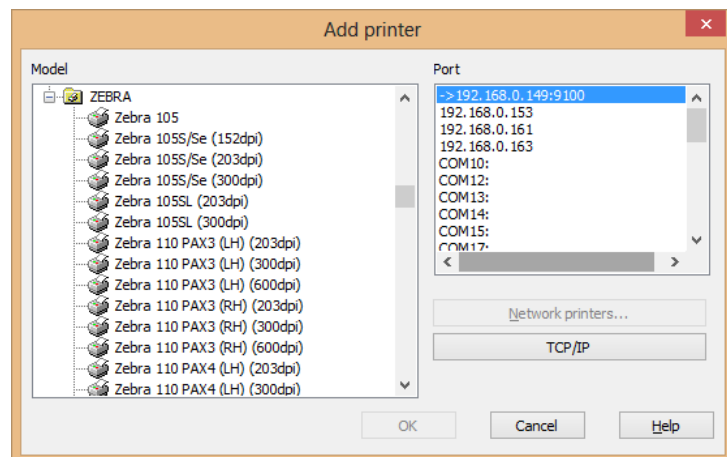
Scroll down to Zebra.



Scroll down to the correct printer:

Zebra 110Xi4(203dpi) or
Zebra(110Xi4(305dpi).

*Note: This will also work for
110XiIII.*



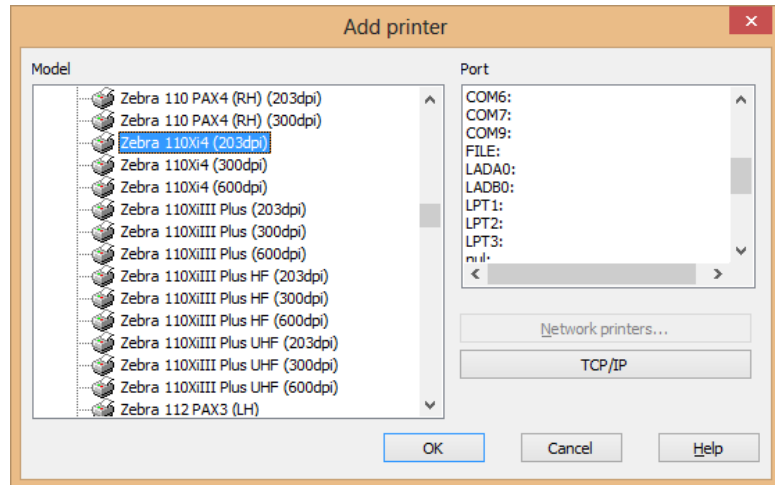


How To

Service Documents from APPI

When the correct printer is chosen, also choose port.

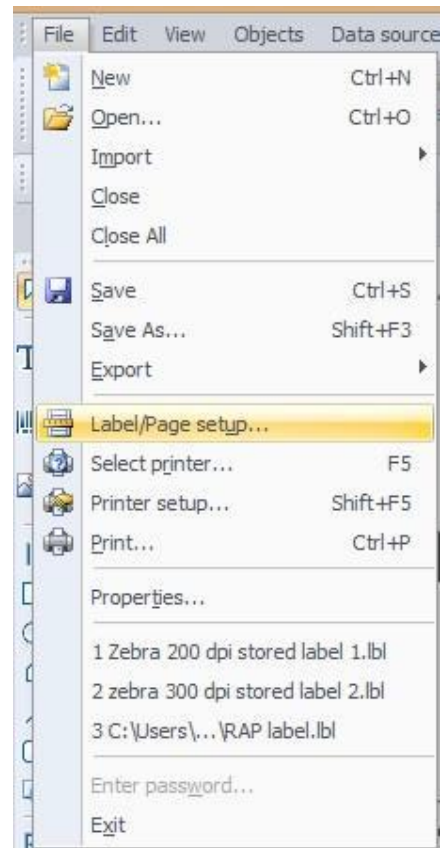
Click "OK".



Zebra 110Xi4 Printer Setup

Page Setup

In LabelView, click FILE, then LABEL/PAGE SETUP

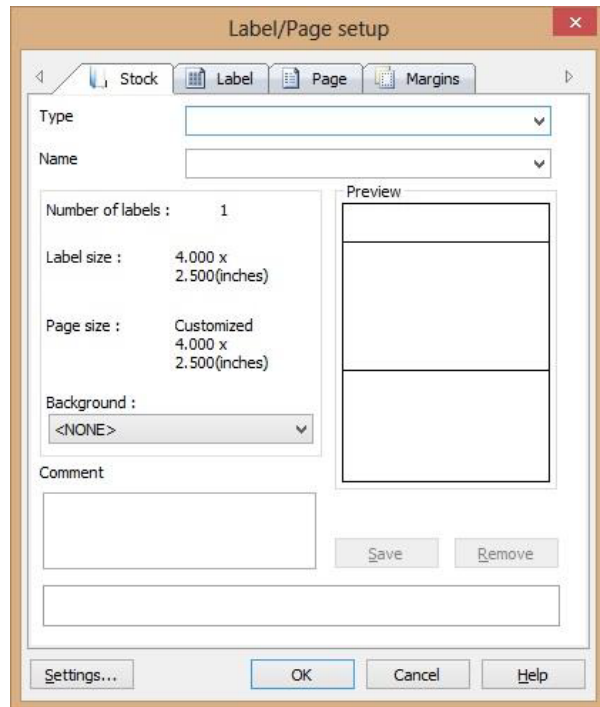




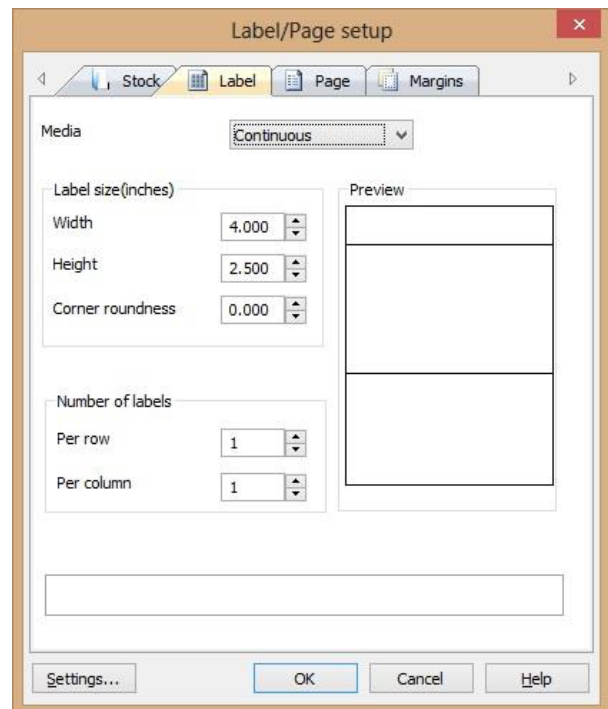
How To

Service Documents from APPI

Stock Tab:



Label Tab:

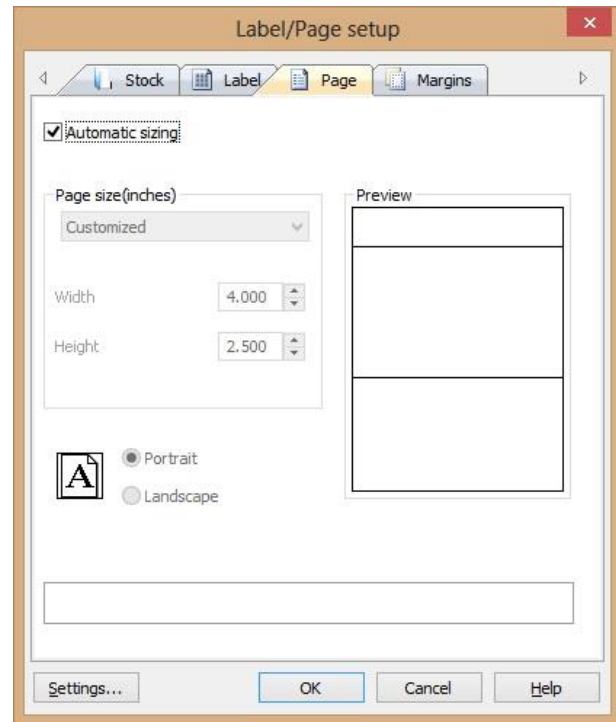




How To

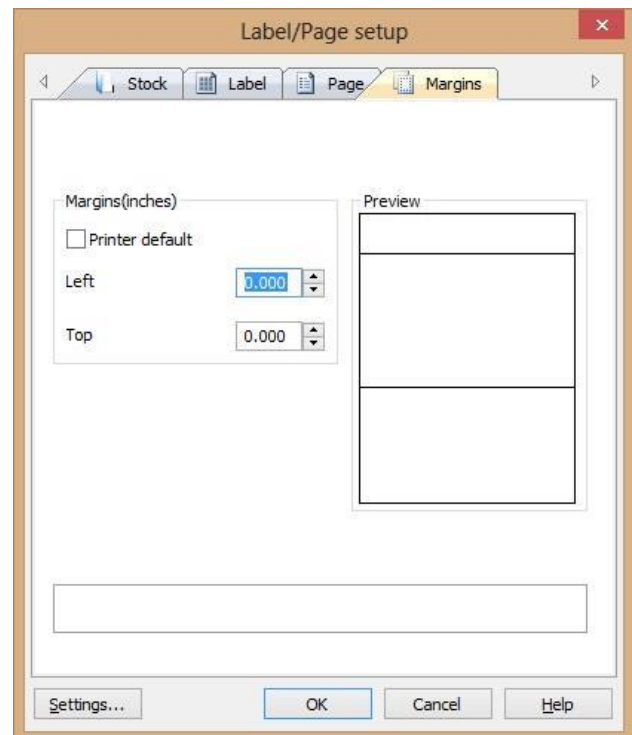
Service Documents from APPI

Page Tab:



Margins Tab:

Click "OK".



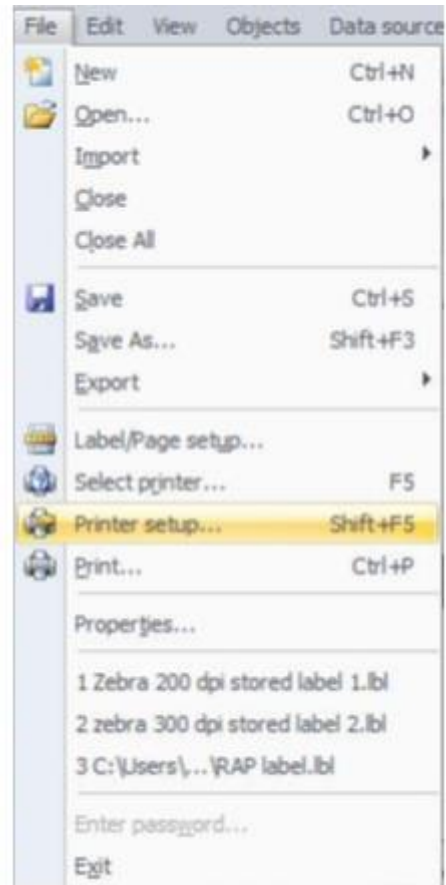


How To

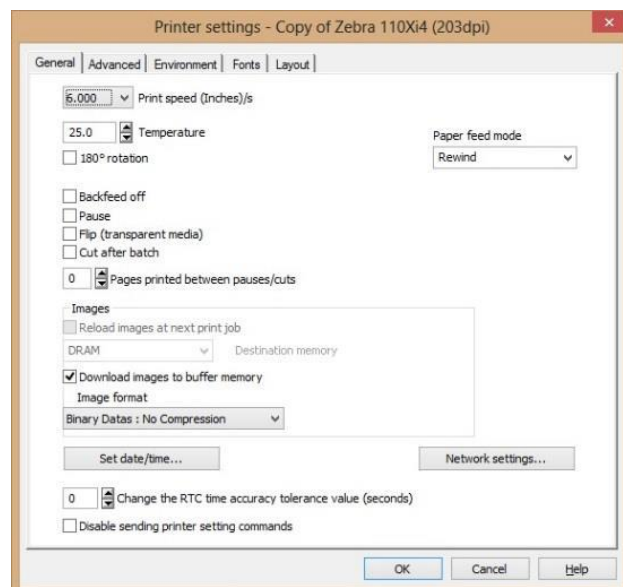
Service Documents from APPI

Printer Setup

In LabelView, click “File”, then select “Printer Setup”.



General Tab:

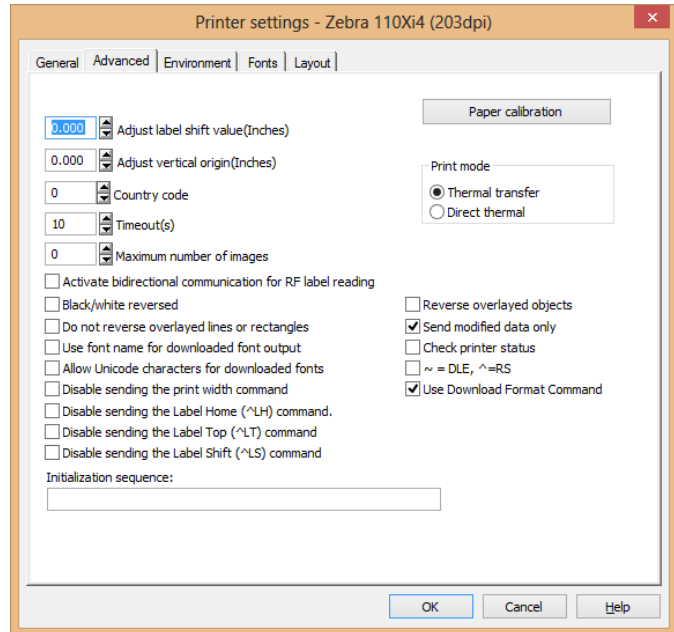




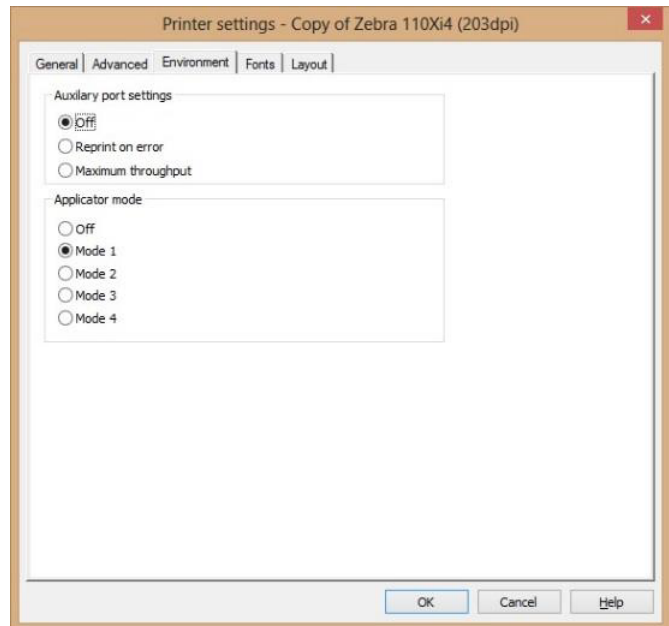
How To

Service Documents from APPI

Advanced Tab:



Environment Tab:

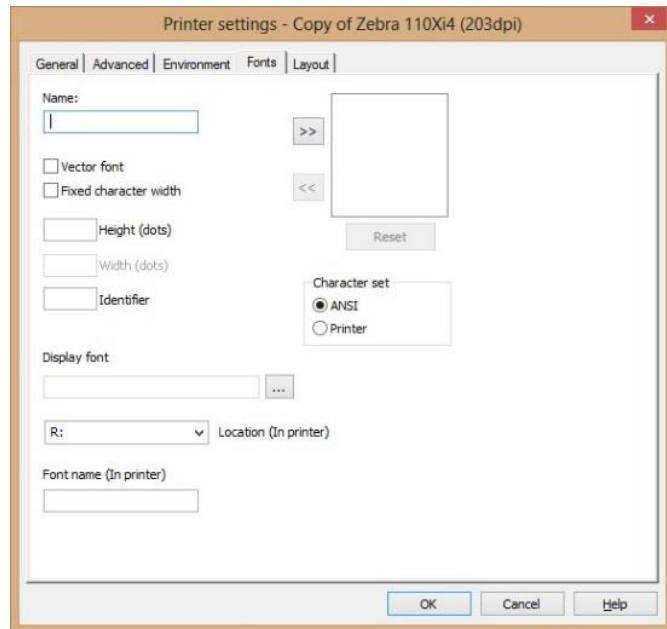




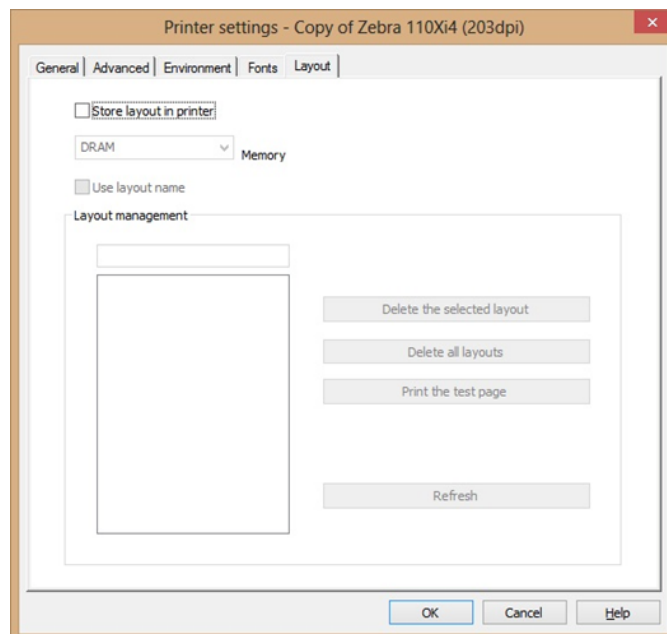
How To

Service Documents from APPI

Fonts Tab:



Layout Tab:





How To

Service Documents from APPI

Click **“OK”**, this will take you back to your label.

This label now contains all the printer settings, and can be used as a base for all future labels.

To save this as a **"Standard Label"** click **“File”**, then **“Save As”**.

Type in the name you want for your standard label, and click **“OK”**.