

How To

Service Documents from APPI

Document: #HT000158

Document Title: Force Ribbon Sensor Calibration

Product(s): Any TIZ Printer

Procedure:

Zebra Setup Utilities

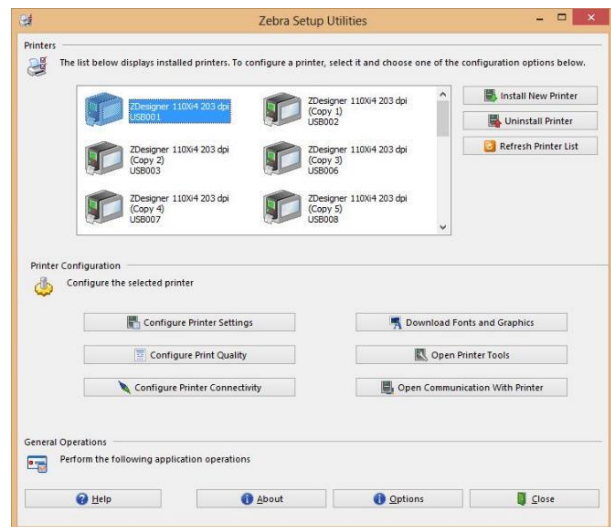
Zebra Setup Utilities (ZSU) is available for download [here](#).

On a computer that is connected to the printer via USB cable (such as a laptop), install the software.

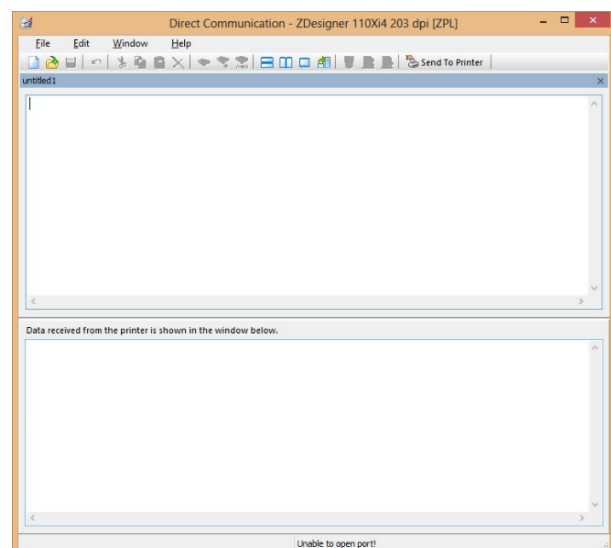
Clear labels from the Bagger.

Open ZSU.

Once set up with ZSU, make sure the printer is highlighted, and click **Open Communication With Printer**.



This Window will appear:





How To

Service Documents from APPI

Type in exactly as shown, including the ^.

^XA

~JG

^XZ

The ~JG command forces the calibration, and will print calibration

graphs on a normal Zebra printer. Since APPI's printers has special

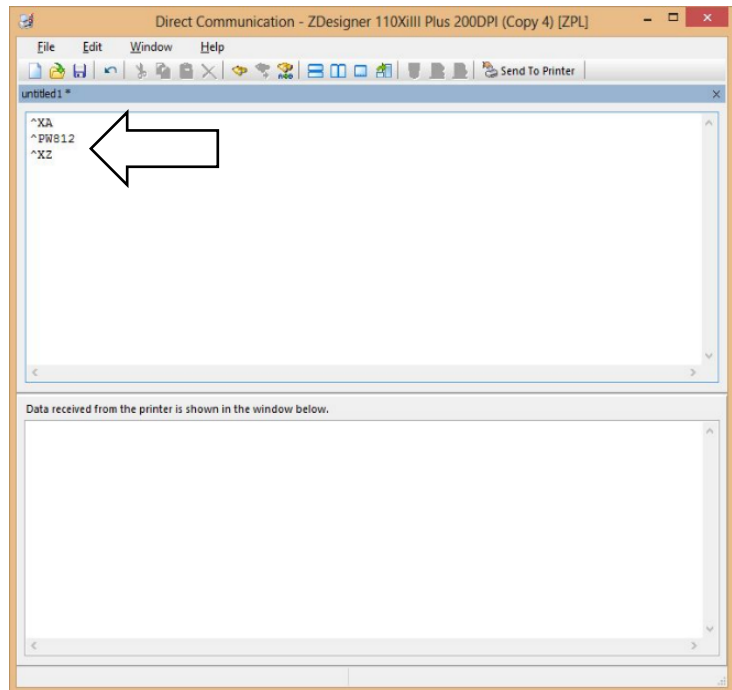
firmware, it may not print the graphs.

When ready, click **Send To Printer**.

If a label loads on the **Touch Screen**, press **Manual Cycle** to print.

Exit out of **ZSU**. Send a label that is known to work properly, and print.

Compare label settings between working label and the label that caused problems.



How To

Service Documents from APPI

ZDesigner Printer Driver Settings

The following **ZDesigner Dialog Box** can be found in the Labeling Software used. Check the Help Files on how to select the correct **Print Driver** and adjust the settings.

If no Labeling Software is be used, or no access to the Labeling Software is possible, use the following procedure to access the **ZDesigner Dialog Box**:

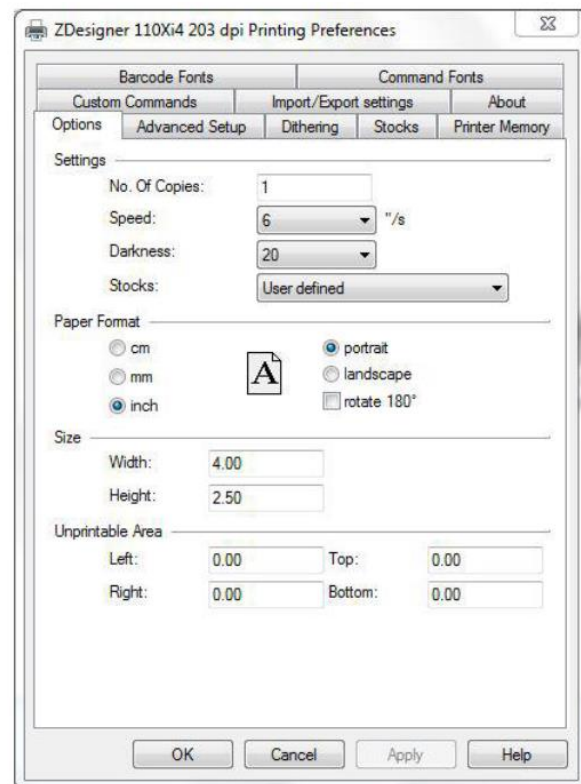
1. In Windows go to **Control Panel** and select **Devices and Printers**.
2. Select the correct Zebra Designer Printer and Right click.
3. Select **Printing Preferences** and Left-Click.

The following **ZDesigner Dialog Box** will appear.

Click on **Options Tab**.

Set setting as shown in the picture.

- Speed is the Print Speed of the Label
- Darkness is the temperature that the print head will use to print the label. *Note: The higher the darkness the dark the label will print*
- but if the darkness is to high then the ribbon may stick to the bag.
- Width is the width of the label
Note: The width cannot exceed the width of the print head.
- Height is the length of the label.
Note: The height of the label should be slightly longer than the label length.



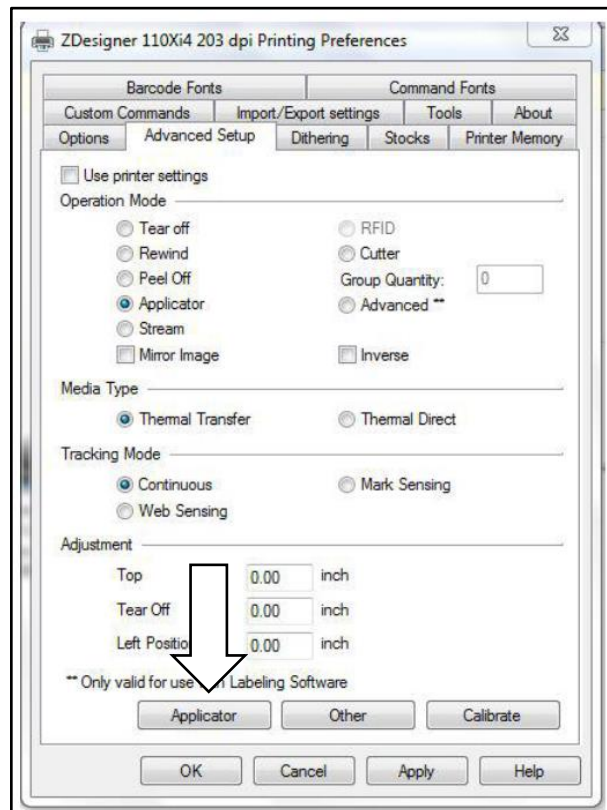
How To

Service Documents from APPI

If **Label Software** is warning that the label is too long the **Label Height** in the **Zebra Designer Print Driver** is too short. The longer the label, the more ribbon will be used.

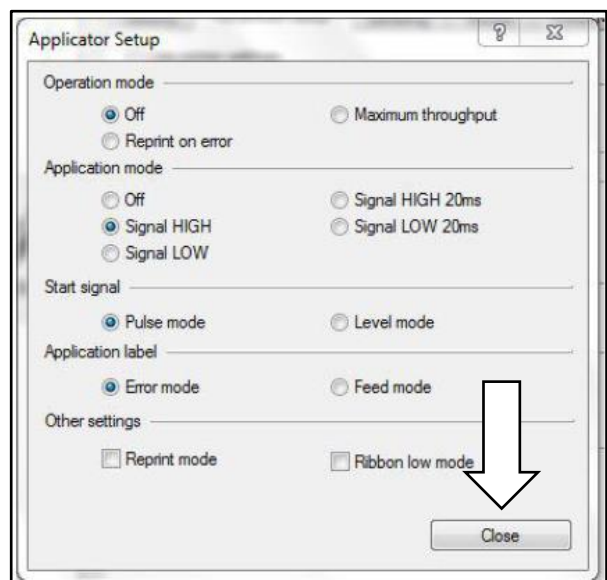
Set settings as shown.

Click on the **Applicator Button**.



Set settings as shown.

Click the **Close Button**.





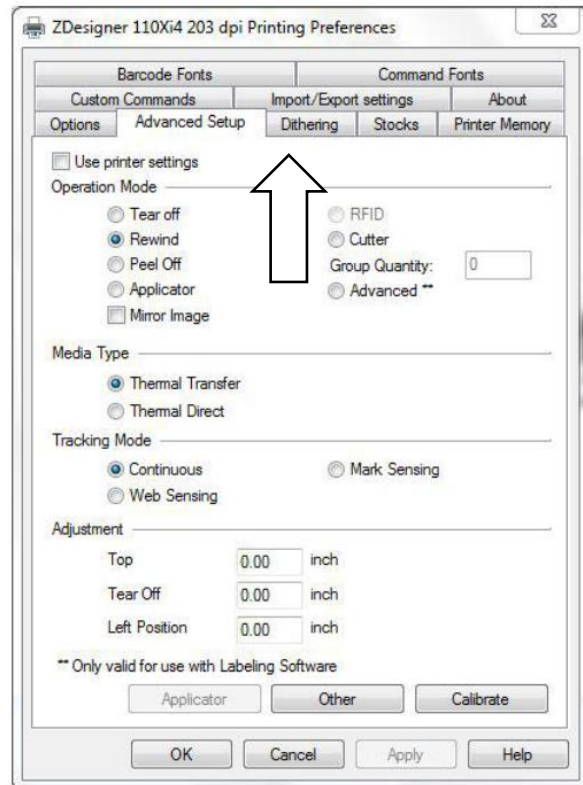
How To

Service Documents from APPI

Set settings as shown.

(Rewind instead of Applicator)

Click on **Dithering Tab**.



Set settings as shown.

Click on the **Apply Button**

Click on the **OK Button**

The **Zebra Designer Print Driver 110Xi4** settings are now set.

Note: Zebra Designer Print Driver 110XiIII settings are similar.

