

How To

Service Documents from APPI

Document: #HT000163

Document Title: Set Up Loftware 7.0.2.6 with Seagull Scientific Printer Driver

Product(s): Any TIZ Printer

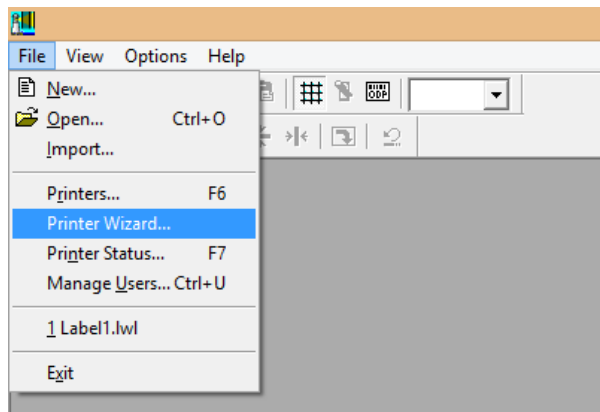
Procedure:

These settings are for Loftware 7.0.2.6. One can assume the version has changed since then.



Loftware Printer Setup – Printer Wizard

Go to Printer Wizard.



How To

Service Documents from APPI

In Loftware 7, there are no direct settings for the Zebra 110Xi4. However, you can choose the Zebra family, and then a 140xIII.

Loftware 7 is an old version. Newer versions may have more choices. According to the Loftware website, there may be a ZPLII family, and it should give you the choice for a 110Xi4. The following setup screens may look different, but the principles are the same.

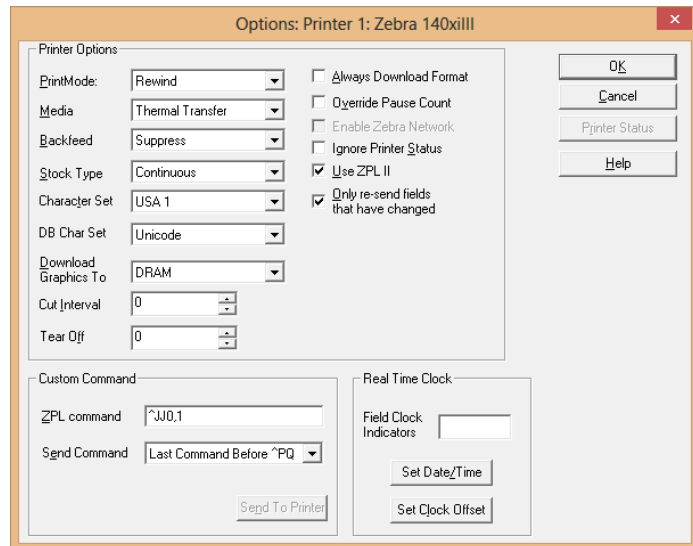
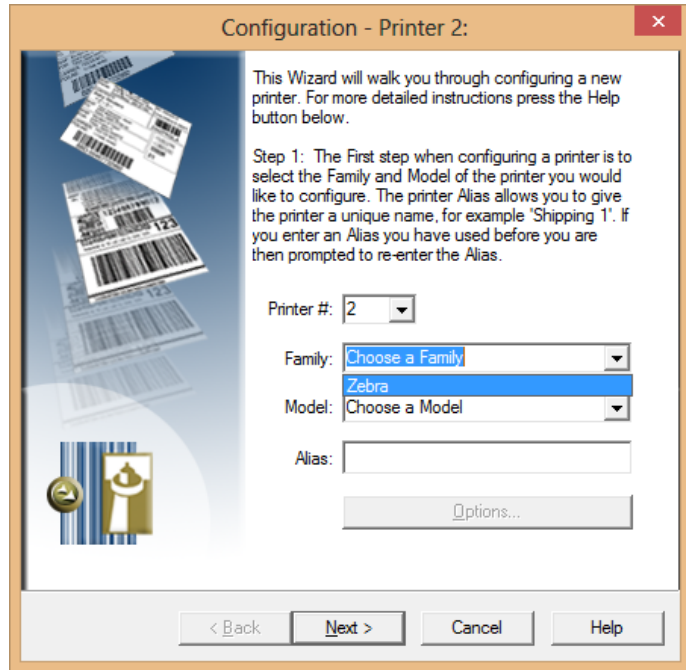
Alias can be whatever you want.

Click **Options**.

The settings should be set like this. Please note lower left corner, Custom command. The ZPL command should be `^JJ0,1`.

This ensures the applicator mode being correct. If your Options screen is different, there may be an Applicator Mode option. It should be Mode 1, or Signal HIGH, or similar.

Click **OK**, and then **Next**.

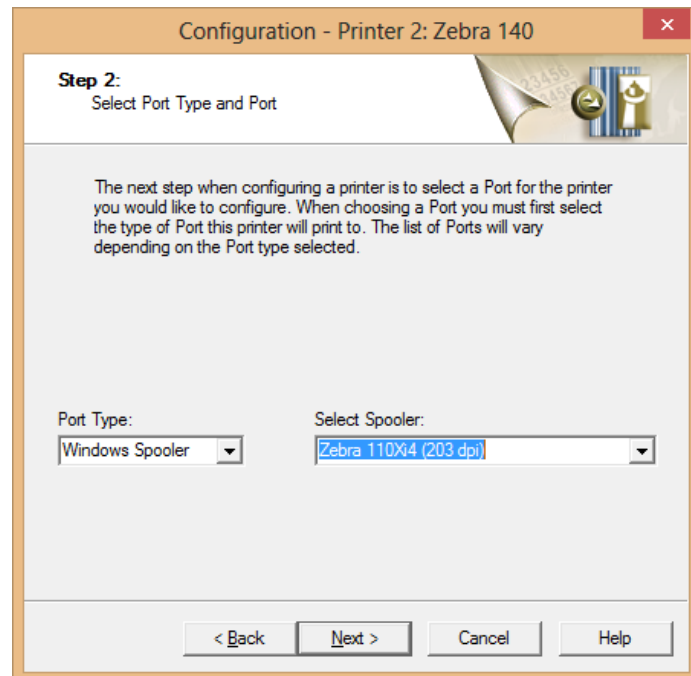
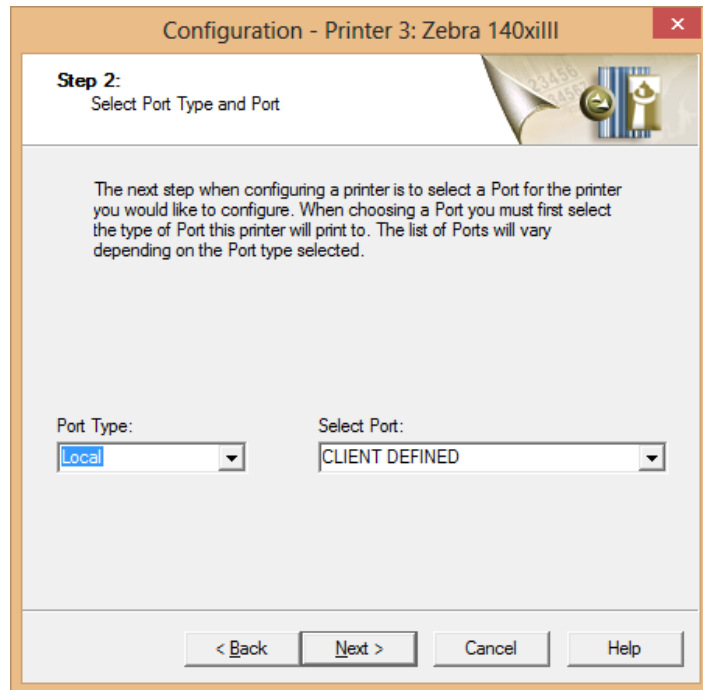




How To

Service Documents from APPI

Change the options as shown. A later version of Software may have the USB option here instead.

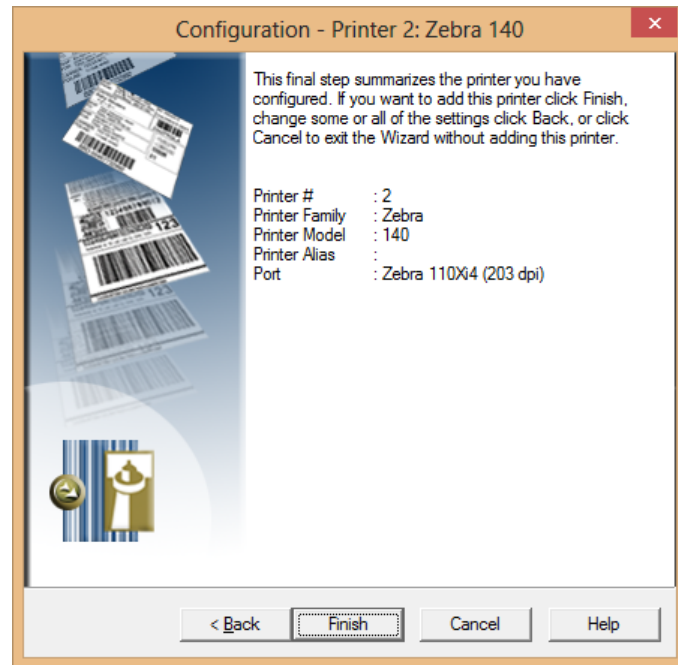




How To

Service Documents from APPI

Done.



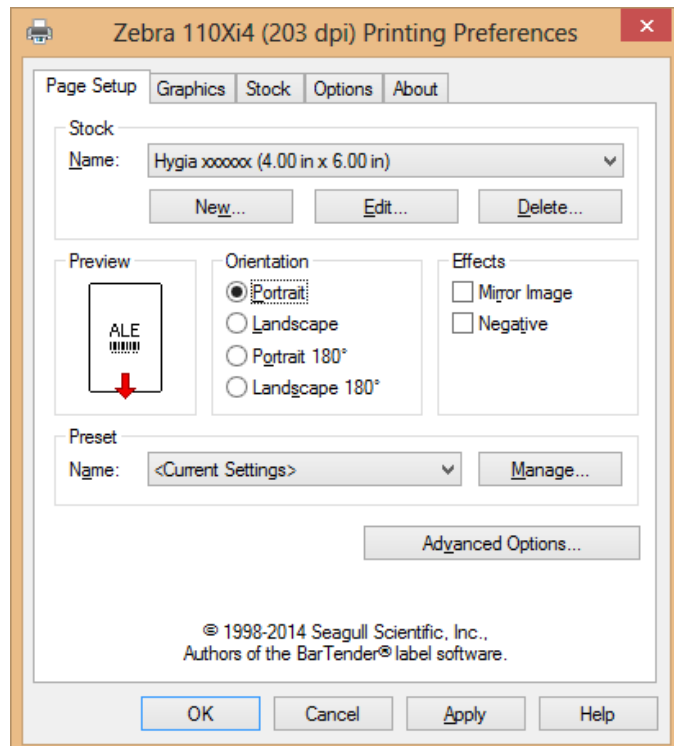
Seagull Scientific Printer Driver

In **Printers and Devices**, right-click the Zebra printer.

Right click **Printing Preferences**.

Change this screen according to your system.

Click **Graphics**.

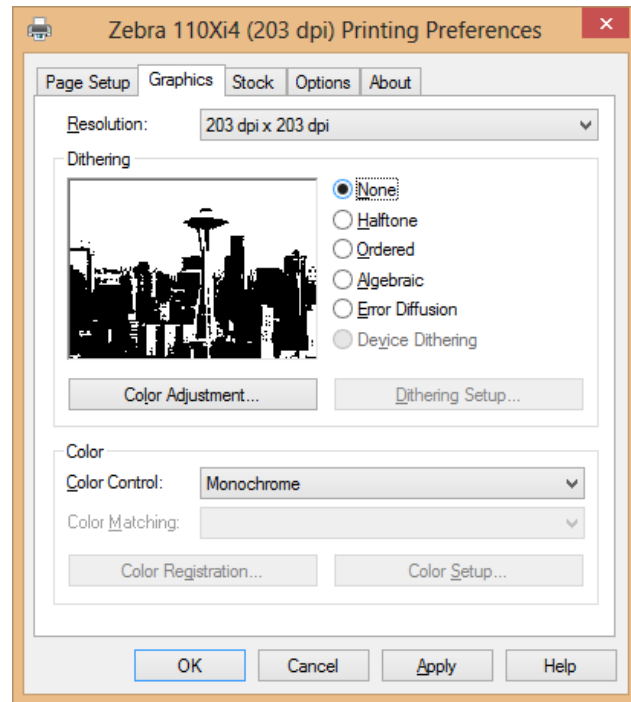




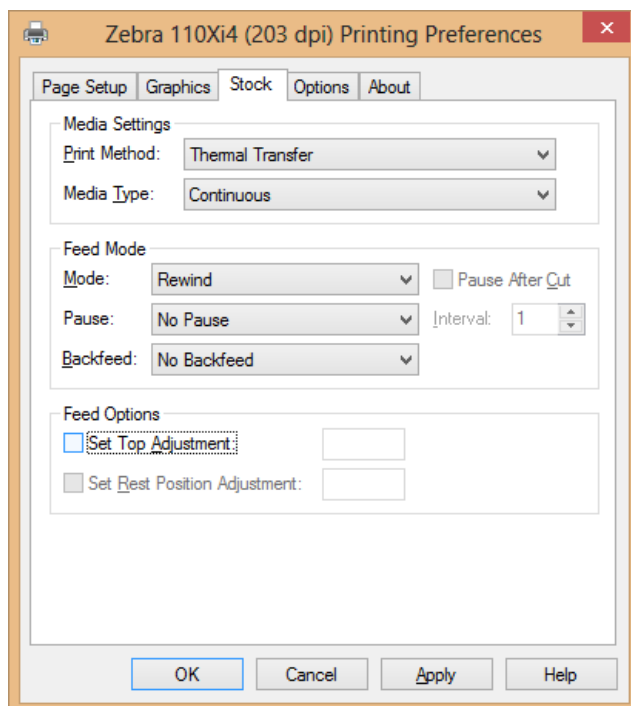
How To

Service Documents from APPI

Graphics can be set to anything, but **None** seems to work best.



Set according to the screen shot.



How To

Service Documents from APPI

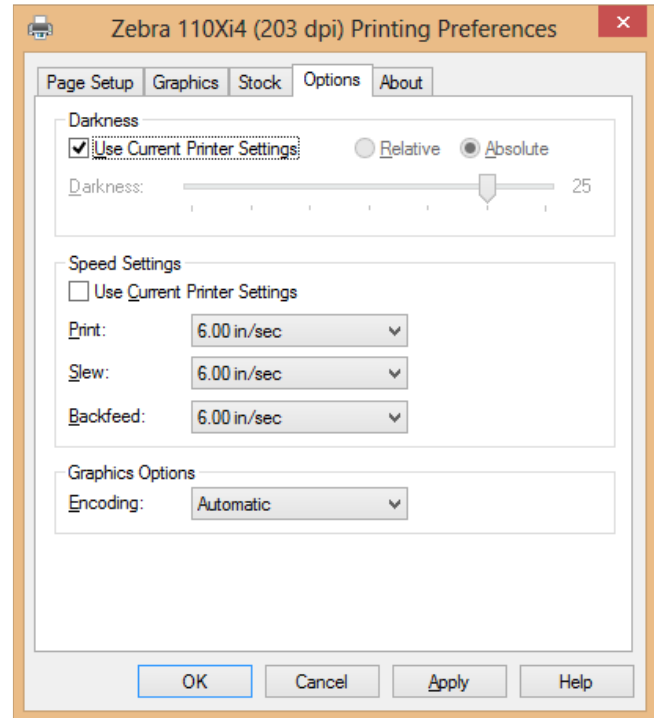
Darkness:

Use current setting lets you set darkness on the printer.

If unchecked, use **Absolute**.

Relative can be a little unpredictable because it adds or subtracts from current **Darkness**.

Speed settings, use 6"/sec.



In **Printers and Devices**, right-click the printer, and click **Printer Properties**. **Ports** and **Advanced** should be like the two following screens.

