

# How To

## Service Documents from APPI

**Document: #HT000164**

**Document Title: Load ZPL Files Via Zebra Setup Utilities**

**Product(s): Any TIZ Printer**

**Procedure:**

*Zebra Setup Utilities*

Zebra Setup Utilities (ZSU) is available for download [here](#).

You may need to scroll down the page to find the **Zebra Setup Utilities**.

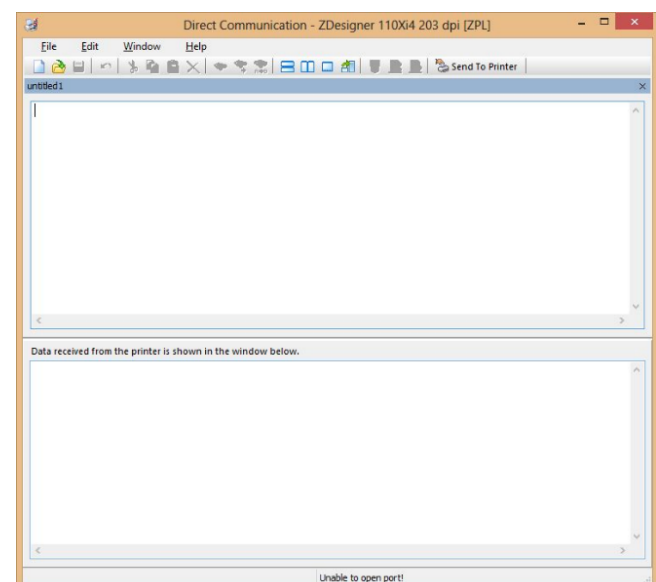
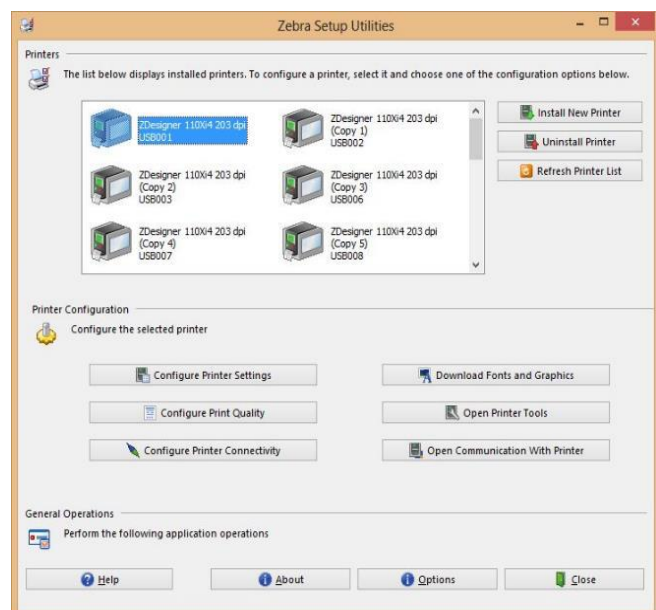
Install the software on a computer that is connected to the printer via USB cable (such as a laptop).

Clear labels from the Bagger.

Open ZSU.

Once set up with ZSU, make sure the printer is highlighted, and click **Open Communication With Printer**.

This window will appear.



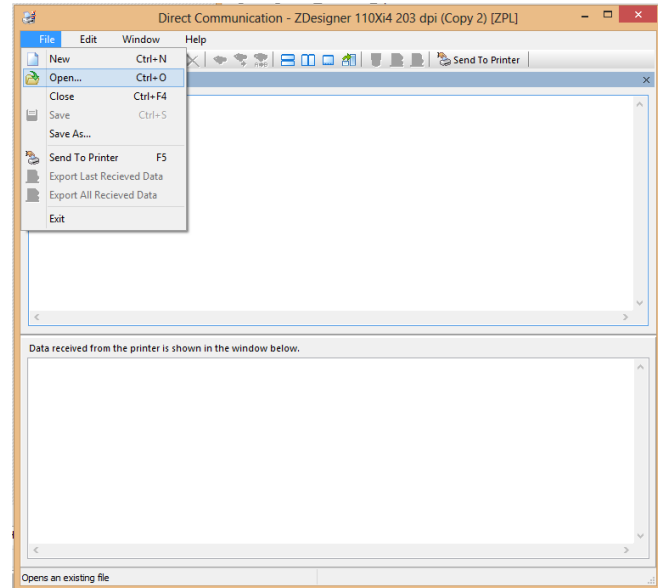


# How To

## Service Documents from APPI

Click **File – Open**.

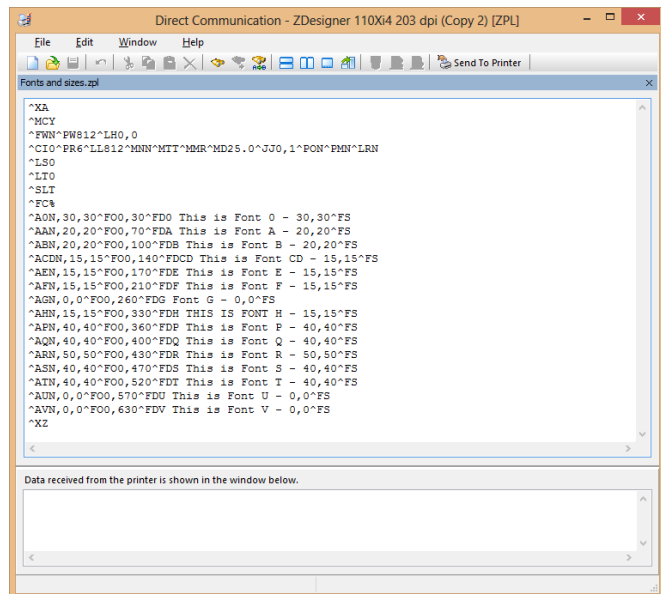
Browse to the file you need, and open it. This example uses the “**Fonts and sizes.ZPL**”.



Click **Send To Printer**.

The Bagger will now show as having a label. Print the label.

*Note: If your label or commands include the command to store the label on the printer, the printer screen will not show as having a label. It will be necessary to load the labels from the Stored Labels screen.*



### ZDesigner Printer Driver Settings

The following **ZDesigner Dialog Box** can be found in the Labeling Software used. Check the Help Files on how to select the correct Print Driver and adjust the settings.

# How To

## Service Documents from APPI

If no Labeling Software is be used or no access to the Labeling Software is possible, use the following procedure to access the **ZDesigner Dialog Box**:

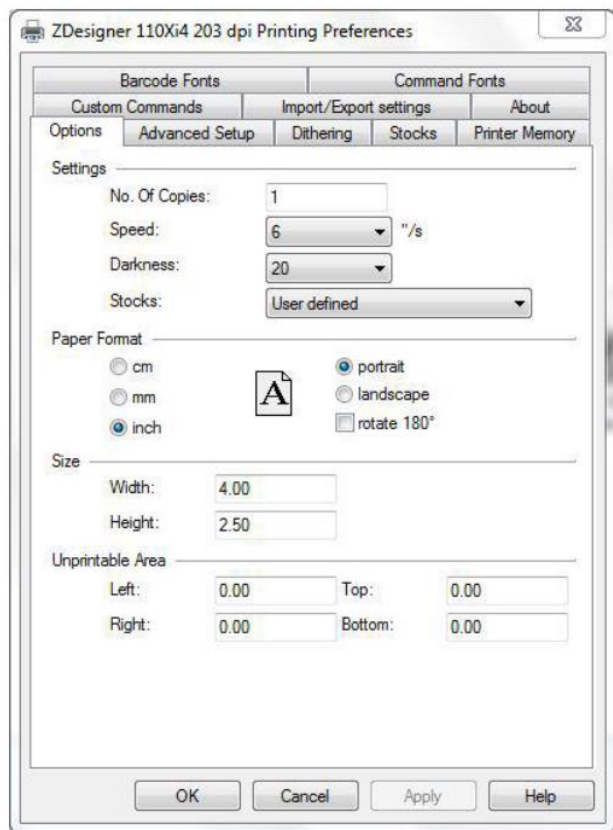
1. In Windows go to *Control Panel* and select **Devices and Printers**.
2. Select the correct **Zebra Designer Printer** and Right-Click.
3. Select **Printing Preferences** and Left-Click.

The following **ZDesigner Dialog Box** will appear.

Click on **Options Tab**

Set setting as shown in the above picture.

- **Speed** is the Print Speed of the Label
- **Darkness** is the temperature that the print head will use to print the label. *Note: The higher the darkness the dark the label will print but if the darkness is to high then the ribbon may stick to the bag.*
- **Width** is the width of the label  
*Note: The width cannot exceed the width of the print head.*
- **Height** is the length of the label.  
*Note: The height of the label should be slightly longer than the label length.*



If Label Software is warning that the label is too long the **Label Height** in the **Zebra Designer Print Driver** is too short.

The longer the label the more ribbon will be used.

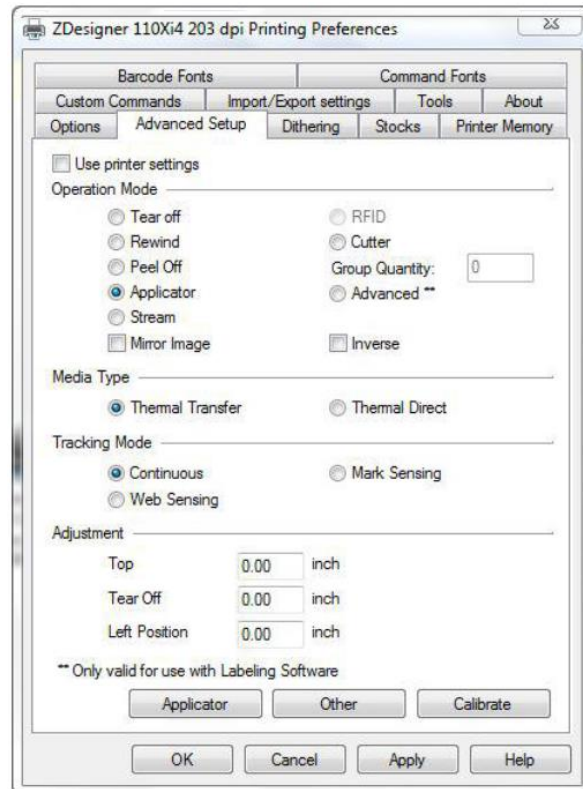


# How To

## Service Documents from APPI

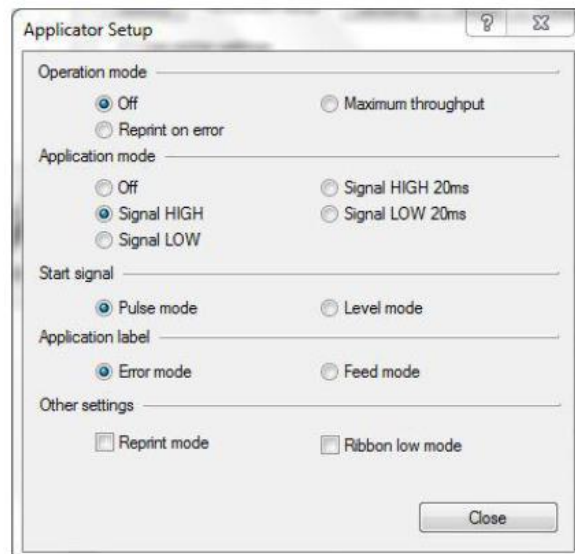
Set **Settings** as shown.

Click on the **Applicator Button**.



Set **Settings** as shown.

Click the **Close Button**.





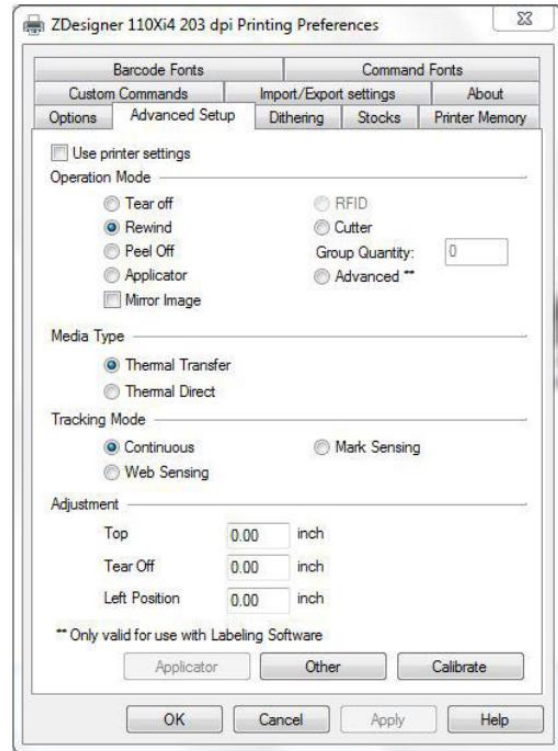
# How To

## Service Documents from APPI

Set **Settings** as shown.

(**Rewind** instead of **Applicator**)

Click on **Dithering** Tab.



Set **Settings** as shown.

Click on the **Apply** Button

Click on the **OK** Button

The **Zebra Designer Print Driver 110Xi4** setting are now set.

*Note: Zebra Designer Print Driver 110Xi4 setting are similar.*

