



How To

Service Documents from APPI

Document: #HT000169

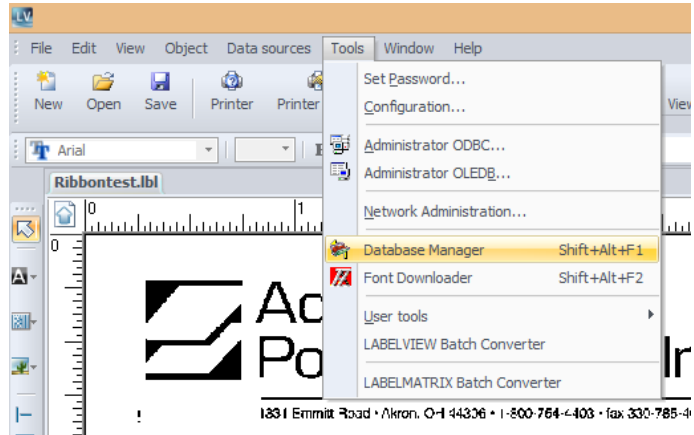
Document Title: Setup Database Connection to the LabelView Test Label

Product(s): LabelView

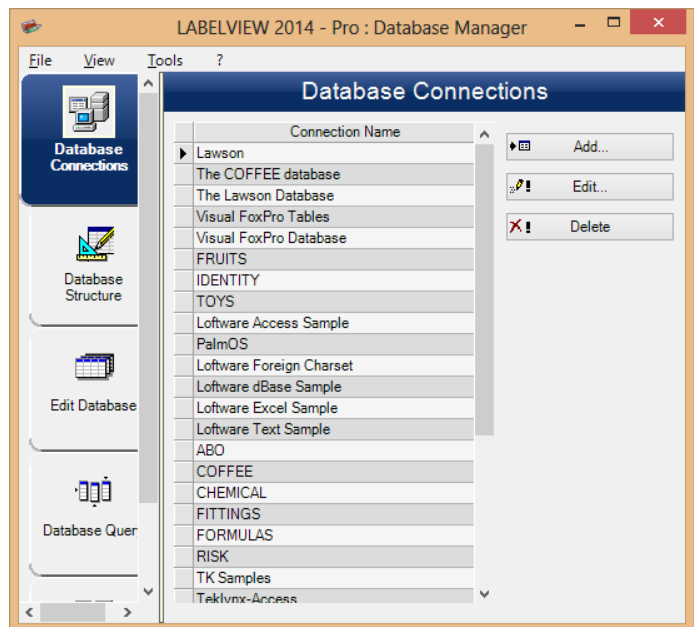
Procedure:

The label needs to be open in LabelView.

Go to Tool – Database Manager.



Click **Add**.



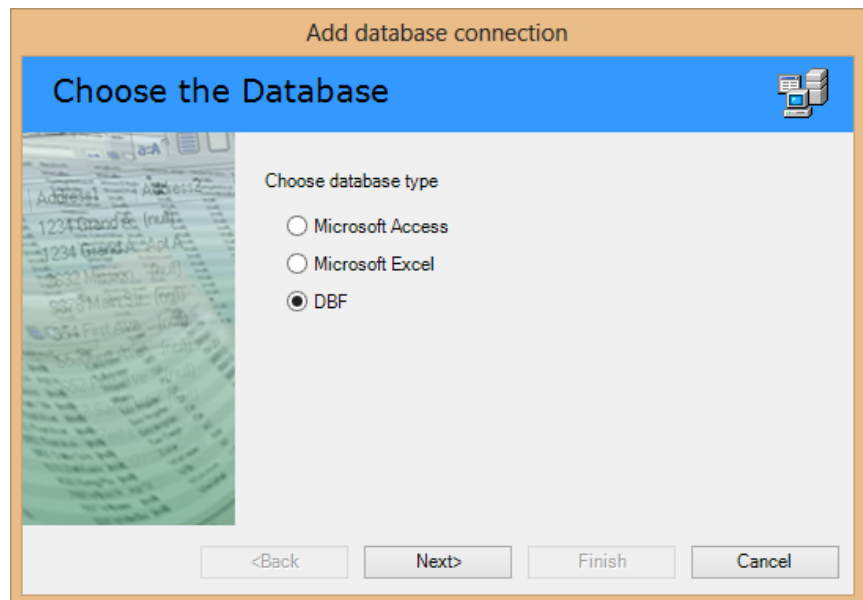


How To

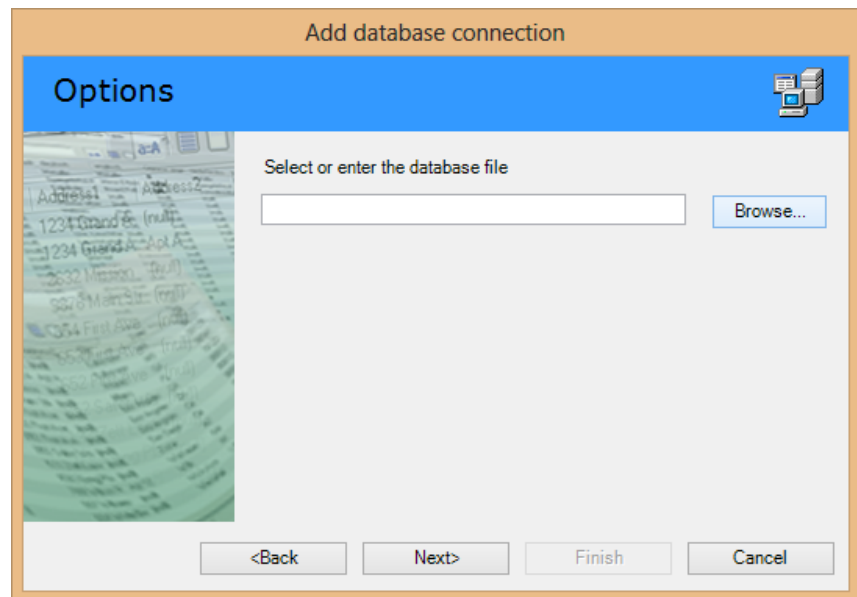
Service Documents from APPI

Check **DBF**.

Click **Next**.



Click **Browse**.



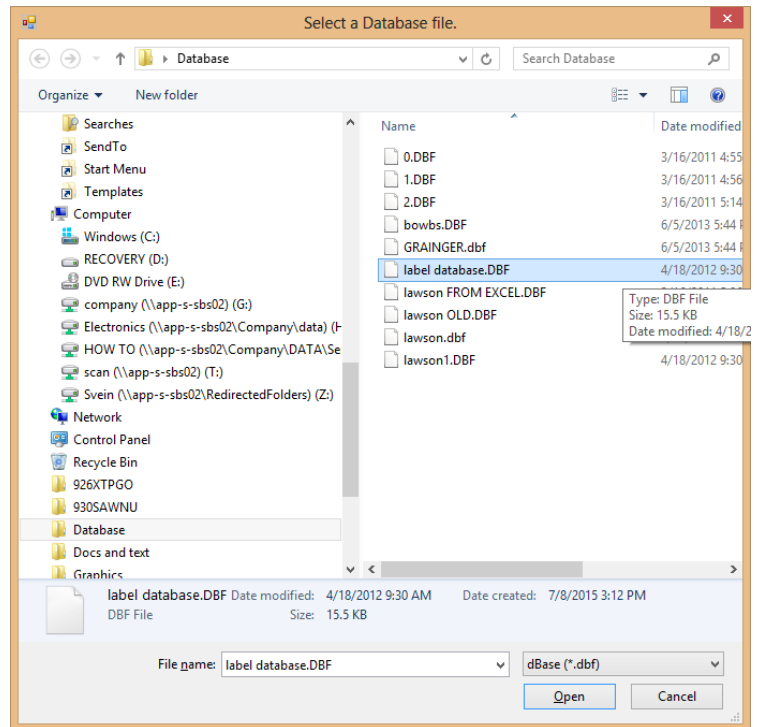


How To

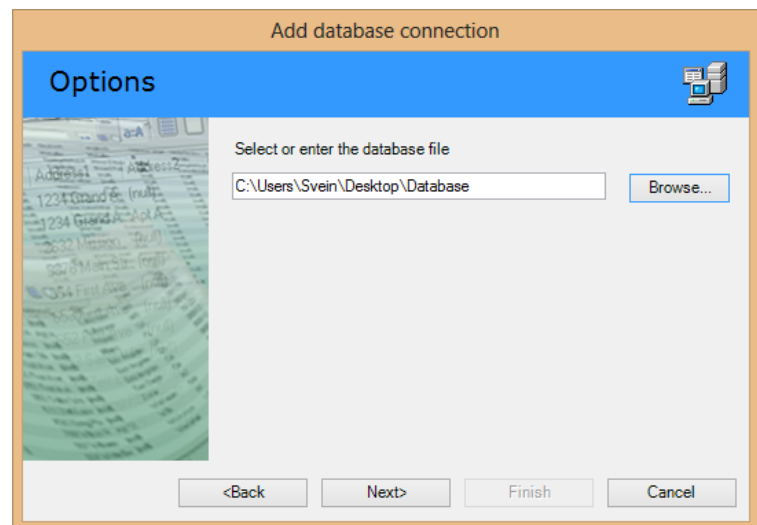
Service Documents from APPI

Browse to where you saved the database files.

Click **label database.DBF**



Click **Next**.



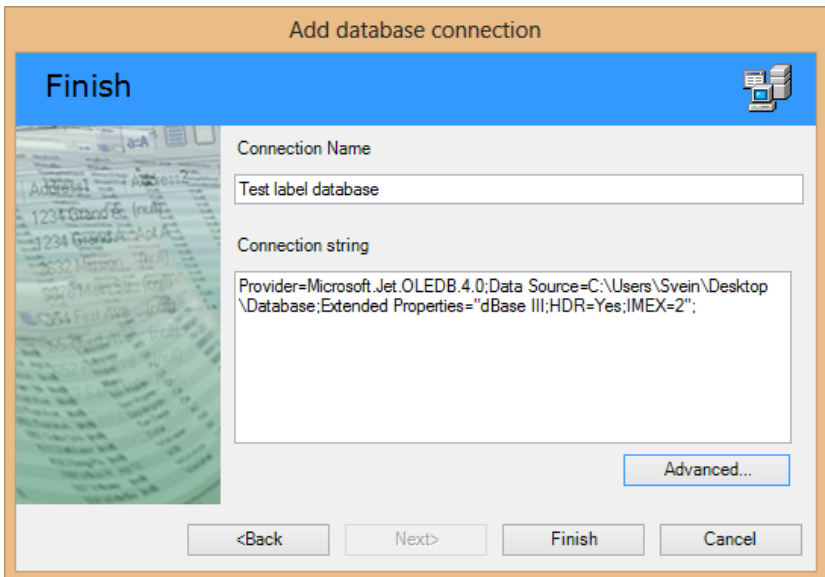


How To

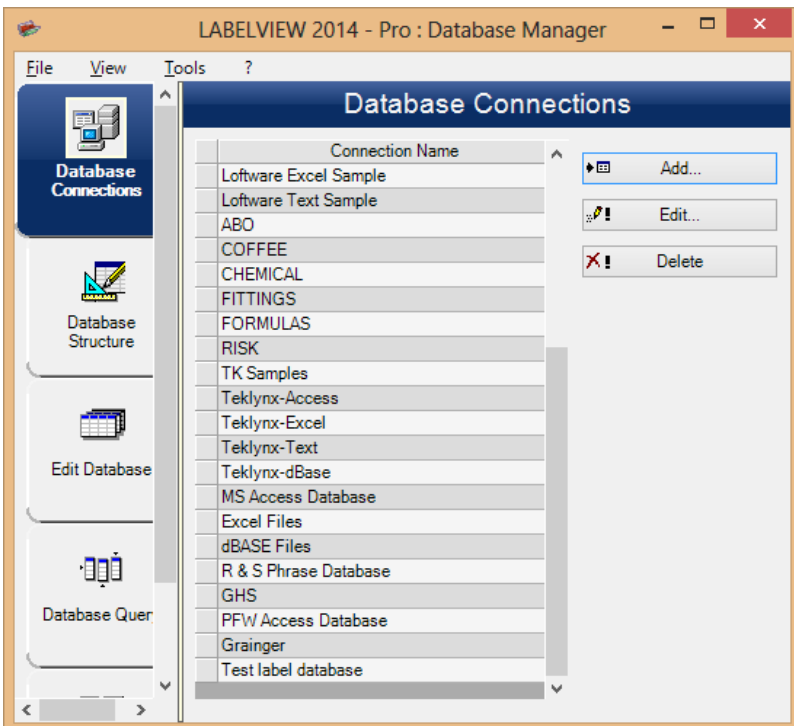
Service Documents from APPI

Click the field for
Connection Name.

Type in **Test Label
Database.**



The database will show up
last on the list.





How To

Service Documents from APPI

Click **File – Exit**.

The label is already set up, and is now working.

When you go to print, you can scan in the database information, and LabelView will fill in the missing information.

