



# How To

## Service Documents from APPI

**Document: #HT000171**

**Document Title: Set Up Seagull Scientific Printer Driver**

**Product(s): Any TIZ Printer**

### **Foreword:**

These settings are for setting up a Seagull Scientific Printer Driver. If the ZDesigner Printer Driver is currently installed, it needs to be completely uninstalled. This should only be done by IT personnel. The instructions in the document describe how to completely remove ZDesigner Printer Driver.

### **Procedure:**

#### *Installing the Seagull Scientific Driver*

---

The Seagull Scientific Driver is available for download [here](#).

It works for all Zebra printers on the Advanced Poly-Packaging Baggers.

Double click the downloaded file.

Accept the terms.

Click **Next**.





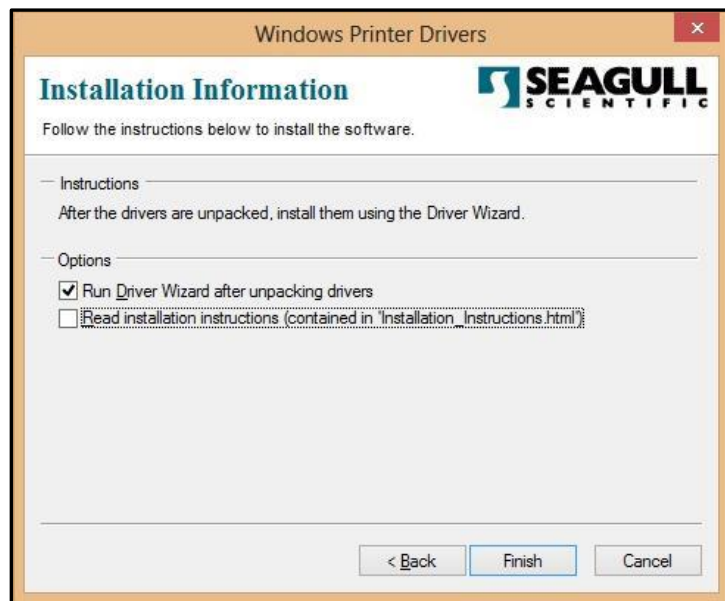
# How To

## Service Documents from APPI

Unless you want to unpack it elsewhere, click **Next**.



Unpacking is finished.  
Click **Next**.

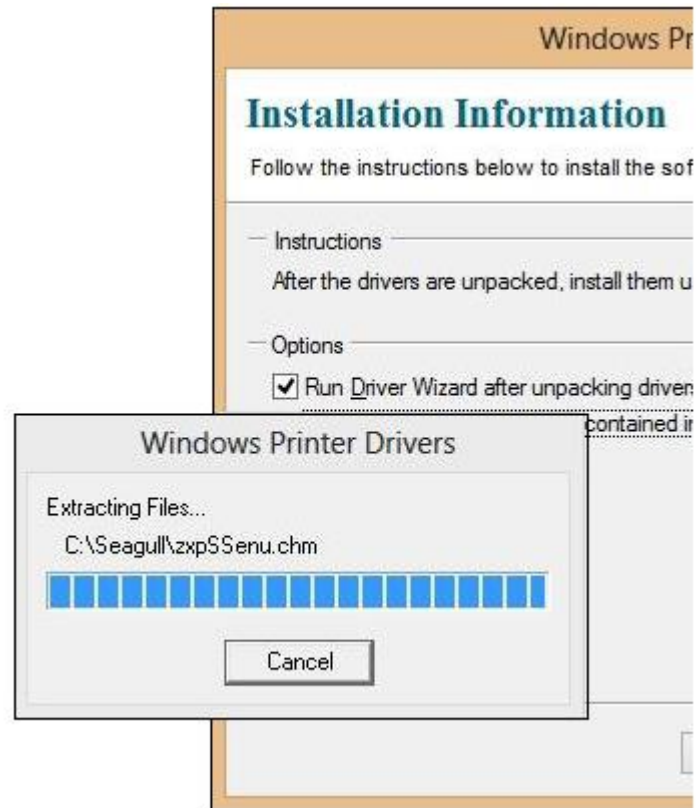




# How To

## Service Documents from APPI

It will take a while for Windows to process this.



Click **Next**.

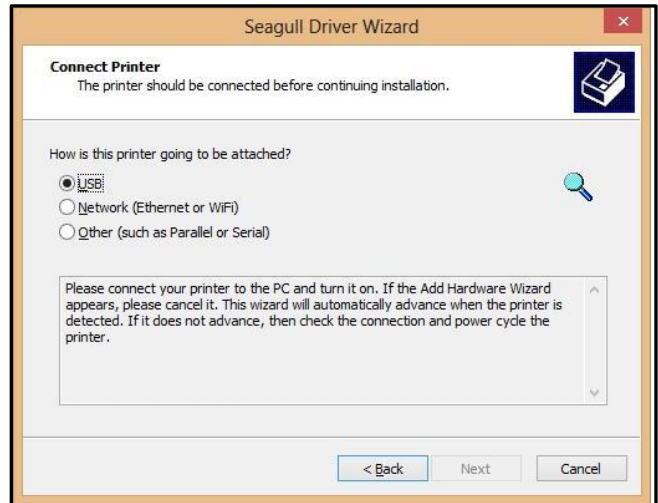




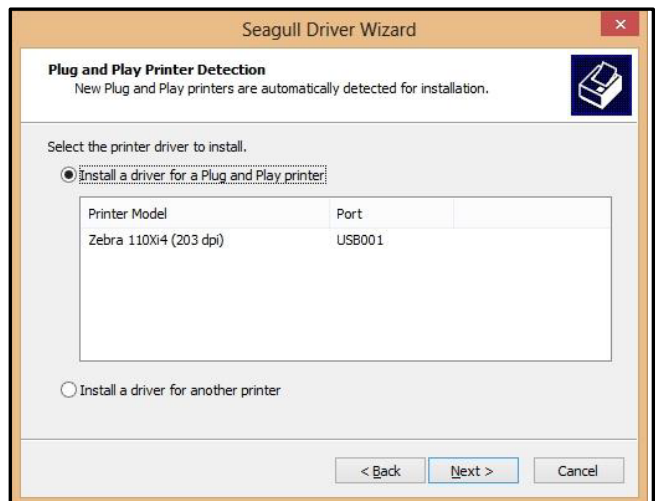
# How To

## Service Documents from APPI

Click **Next**.



Click **Next**.



Enter any name you want, or leave the default.

Click **Next**.





# How To

## Service Documents from APPI

Verify the settings.

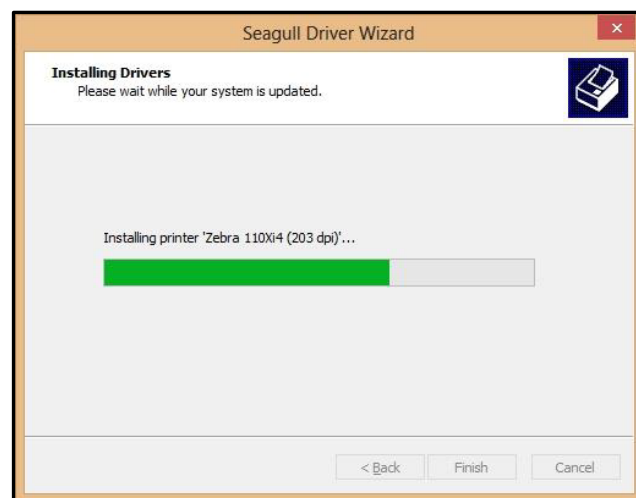
Click **Next**.



You may or may not see this message. Click **Restart** to restart your PC if prompted.



The PC will finish the installation.



# How To

## Service Documents from APPI

### Seagull Scientific Printer Driver Settings

In **Printers and Devices**, right-click the **Zebra Printer**.

Right-click **Printing Preferences**.



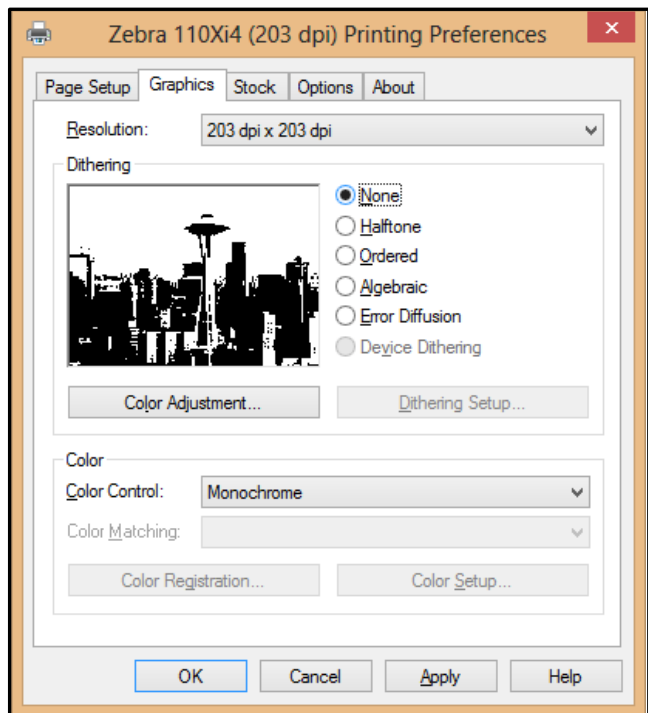
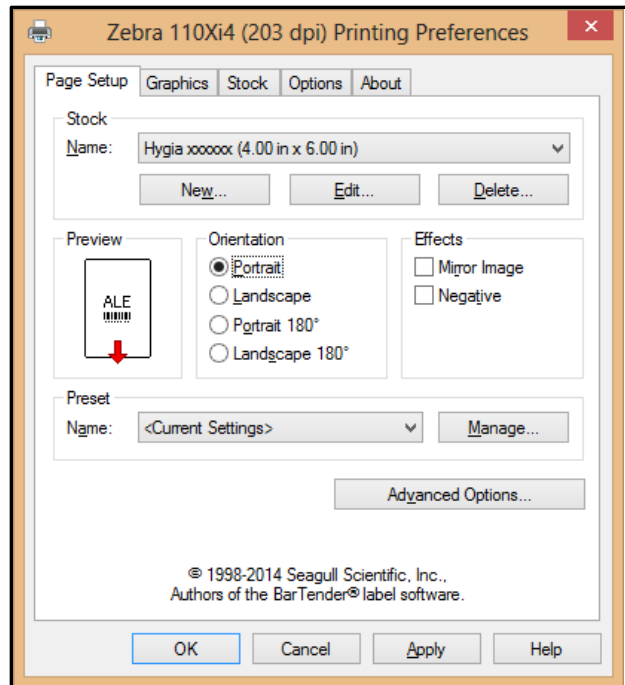
Zebra 110Xi4 (203 dpi)

Change this screen according to your system.

Click **Graphics**.

**Graphics** can be set to anything, but **None** seems to work best.

Click **Apply**.





# How To

## Service Documents from APPI

**Print Method:** Thermal Transfer.

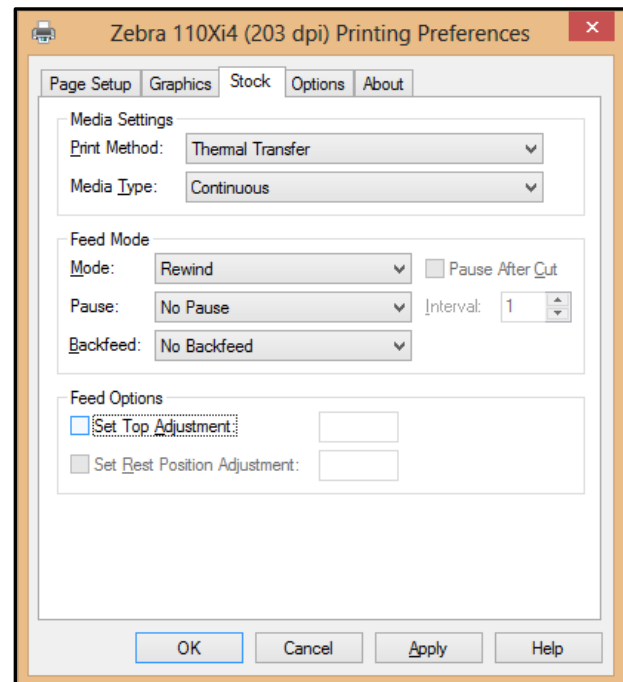
**Media Type:** Continuous.

**Mode:** Rewind.

**Pause:** No Pause.

**Backfeed:** No Backfeed.

Click **Apply**.



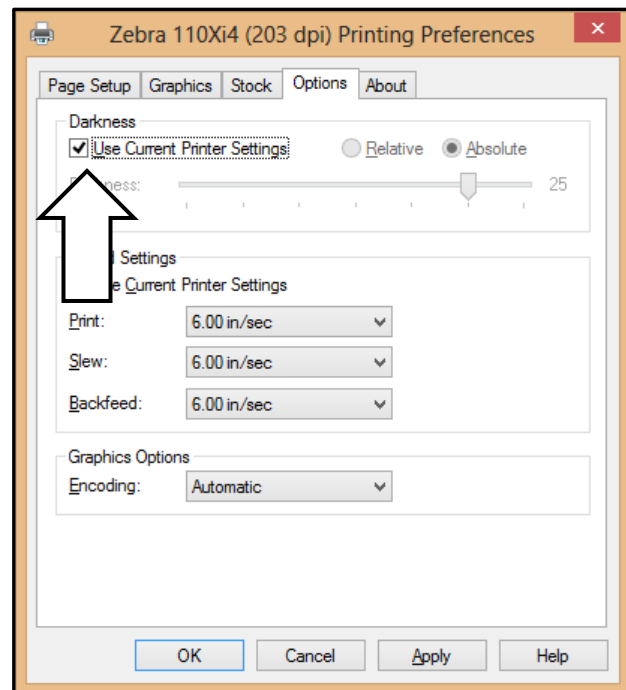
**Darkness:**

**Use Current Settings** lets you set darkness on the printer itself.

If unchecked, use **Absolute**. Relative can be a little unpredictable because it adds or subtracts from current **Darkness**.

**Speed Settings:** use 6"/sec.

Click **Apply**, then **OK**.





# How To

## Service Documents from APPI

In **Printers and Devices**, right-click the printer, and click **Printer Properties**. **Ports** and **Advanced** should be like these screens.

