



How To

Service Documents from APPI

Document: #HT000180

Document Title: Install Aux 2 Upgrade Kit for T-300/375 Tabletop Bagger

Product(s): T-300/375

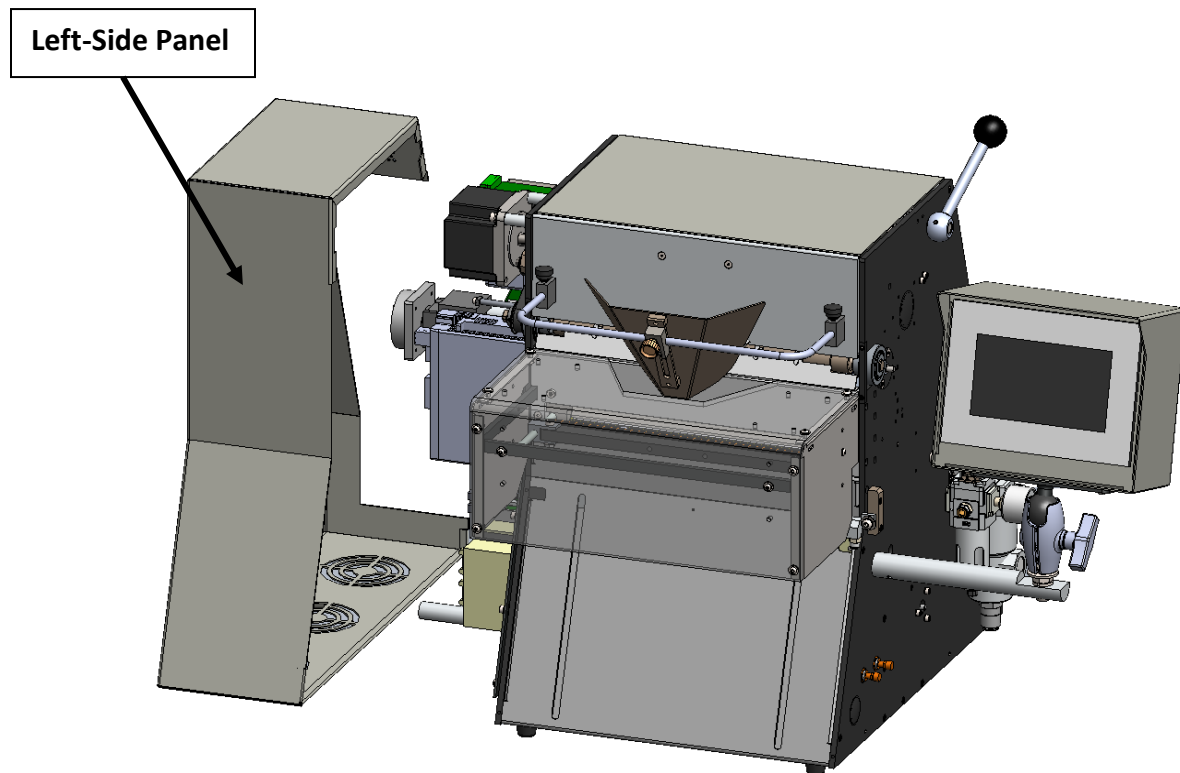
Procedure:

The TO-T14-AUX2 Upgrade Kit consists of three pre-wired sub-assemblies:

1. Relay Socket and Relay
2. 6-Pin Circular Panel Connector (Female)
3. 6-Pin Circular Connector Cable (Male)

Before beginning, turn Main Power OFF, unplug Bagger from outlet, and disconnect from Air Compressor.

Remove the **Left-Side Panel** to access the **Electronics Assembly**.



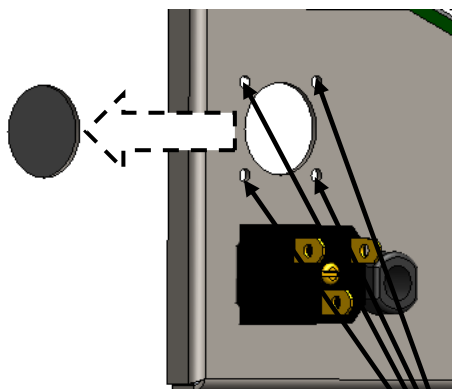
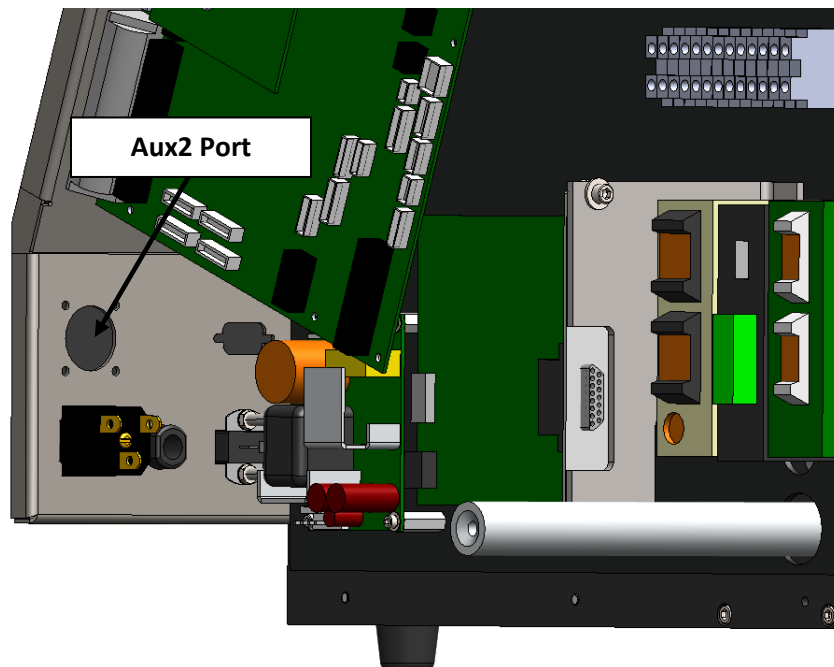


How To

Service Documents from APPI

Panel Connector:

In the Electronics Module, locate the Aux2 Port opening on the Face Plate above the Power Cord. It will be necessary to cut an opening in the Mylar Overlay to accommodate the Aux2 Panel Connector and to punch out the screw holes.



Using a Utility Knife and working from the inside, cut out a circular opening for the Panel Connector. It will also be necessary to punch out the four (4) mounting holes in the Mylar overlay.

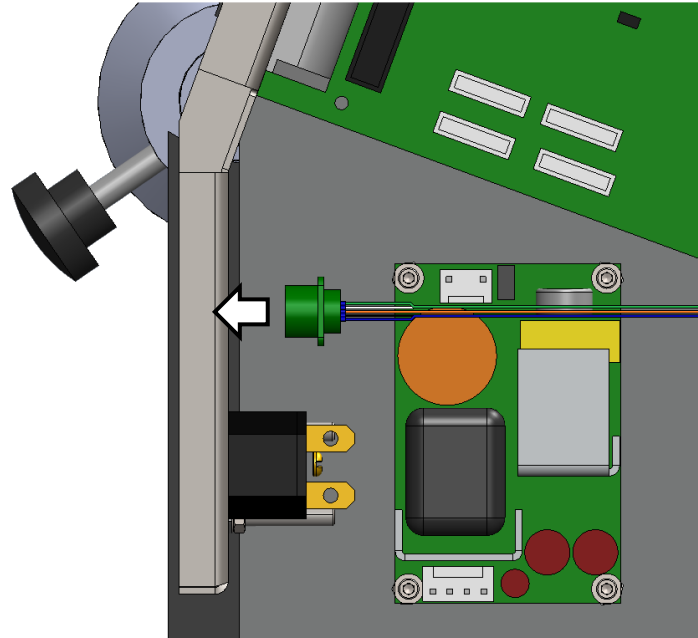
Punch Out in Mylar



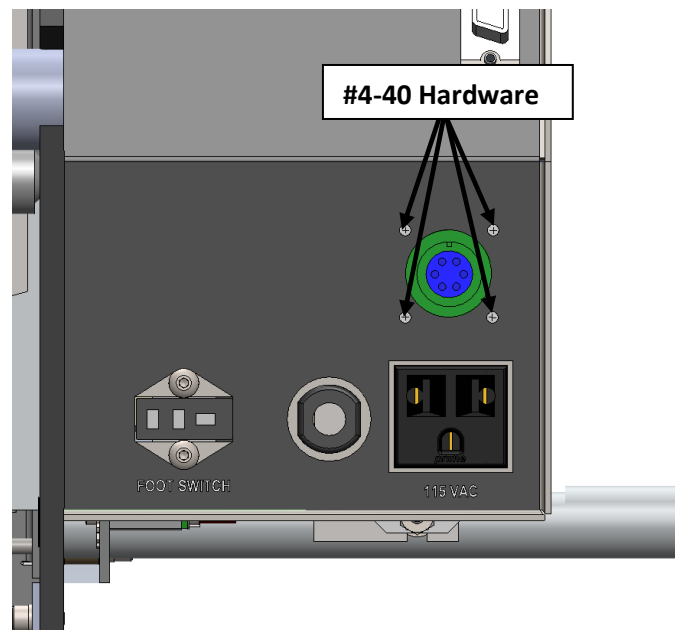
How To

Service Documents from APPI

Insert the Panel Connector through the Front Panel as shown.



Secure the Panel Connector in place using four (4) 4-40 x 1/2" Machine Screws, #4 Lock Washers, and 4-40 Hex Nuts. The wires will be connected in the next section.



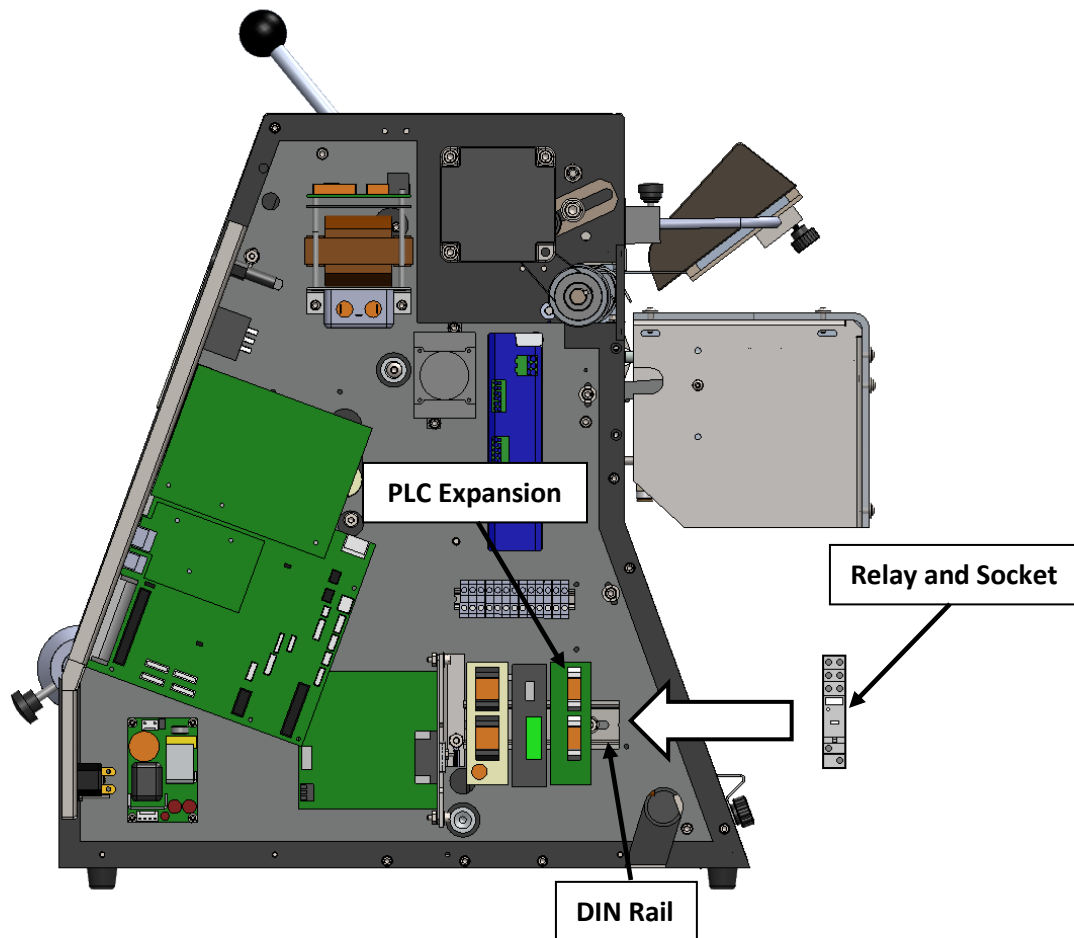


How To

Service Documents from APPI

Relay and Relay Socket:

Locate the DIN Rail and PLC Expansion. Attach the Relay Socket to the DIN Rail next to the PLC Expansion Module as shown.



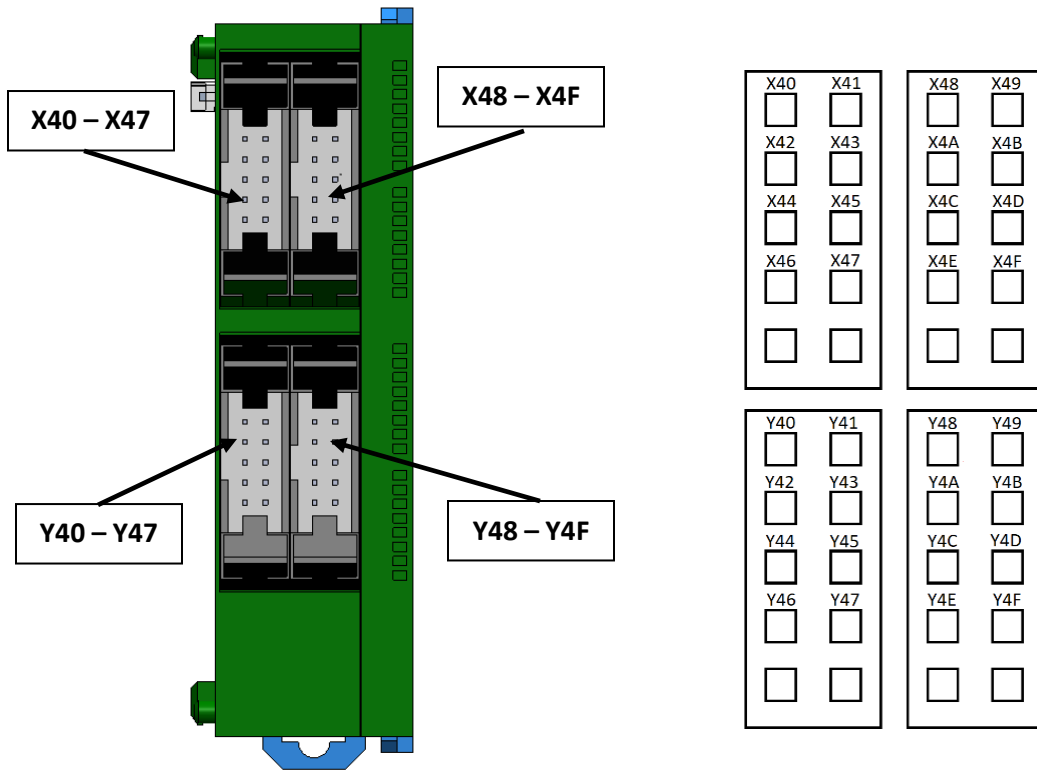
There are two wires attached to the Relay Socket that must be connected to the T-375:

- Brown Wire (24V) – Connect to other brown wires on Power Bar.
- Black/White/Yellow (Y40) – This wire must be connected to the PLC Expansion Module following directions in next paragraph.

How To

Service Documents from APPI

The PLC Expansion Module has four connectors, each for a different group of Inputs (Y) or Outputs (X).

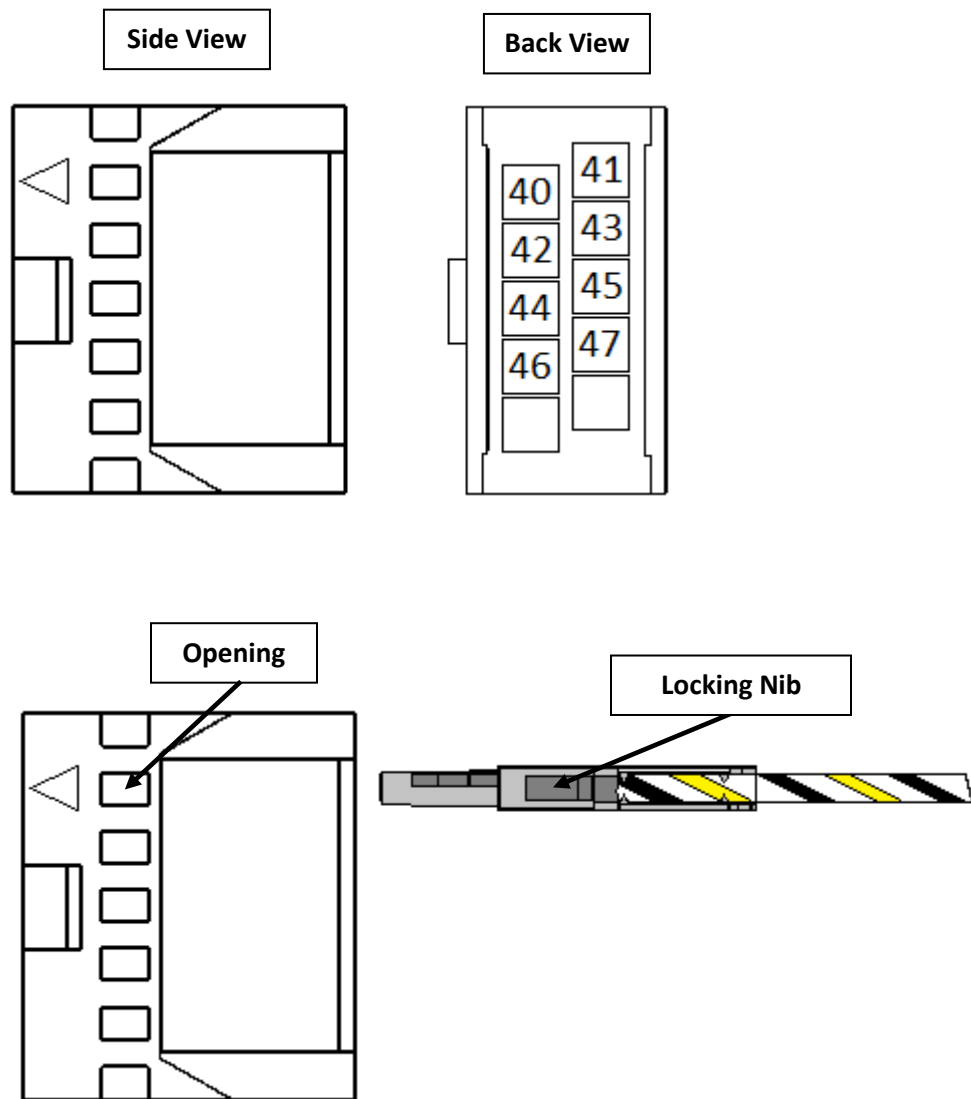


To connect the Relay Wire to the PLC Expansion, remove the Plug in the Y40 – Y47 position (Lower-Left) by pressing down on the tabs. When the Plug is free, insert the Crimp on the end of the Black/White/Yellow wire into the Y40 position (shown). Make sure the locking nib is facing the corresponding opening in the Connector Housing.



How To

Service Documents from APPI



Reinsert the connector into the PLC Expansion Module, pressing it into place until the tabs snap back up, securing the connector.

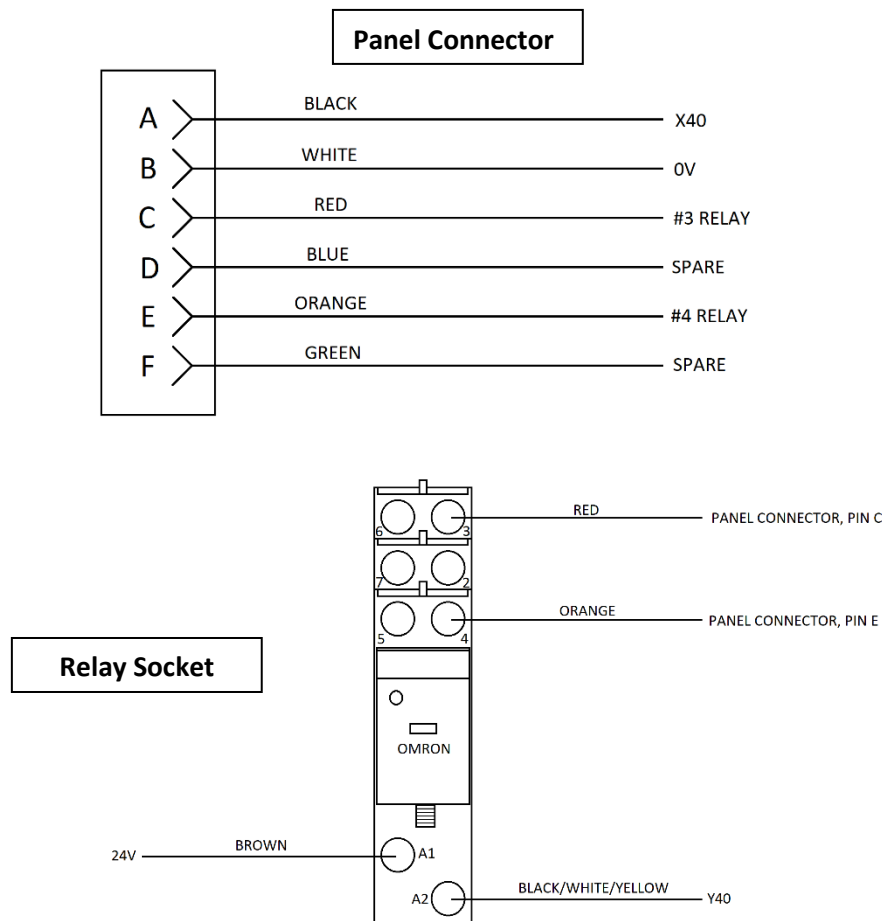
How To

Service Documents from APPI

Connect the six (6) wires from the Panel Connector as shown.

Note: There are two (2) spares that are not connected at this time.

- Pin A – Black Wire; connect to PLC Expansion Module X40 using the same method as the Relay Wire, but connecting to X40 (Output).
- Pin B – White Wire; connect to Power Bar Common section with other white wires.
- Pin C – Red Wire; connect to the #3 Pin on the Relay Socket.
- Pin D – Blue Wire; Spare.
- Pin E – Orange Wire; connect to the #4 Pin on the Relay Socket.
- Pin F – Green Wire; Spare





How To

Service Documents from APPI

6-Pin Circular Connector Cable:

The 6-Pin Circular Connector Cable plugs into the Aux2 Connector at the Tabletop Bagger, and is open-ended to permit connections to additional machinery. The required connections are:

- Bag In
- Bag Common
- Cust Common
- Bag Ready

There are also two (2) unused Spare connections:

Use the following diagrams to correctly complete the assembly.

